

# KINGSLEY PARK

BILLERICAY



## The Olive

### FOUR BEDROOM HOME

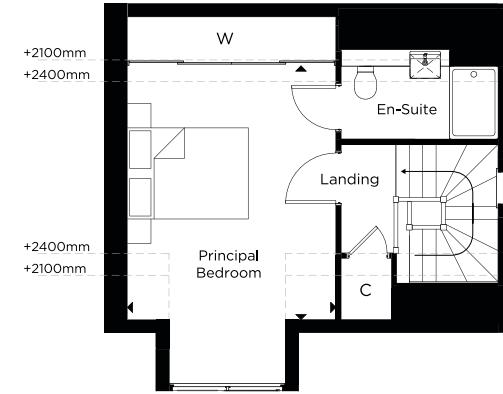
#### DETACHED HOMES 8 & 115

Experience exceptional family living in our spacious 4-bedroom homes, where comfort meets sophistication. These homes offer expansive layouts with multiple living areas, en-suite principal bedrooms, and thoughtfully crafted outdoor spaces – perfect for entertaining or relaxing in the fresh air. Nestled within a serene, leafy development yet minutes from Billericay's town centre, these homes offer the perfect blend of rural calm and urban accessibility. Live in a place where community, connectivity, and quality come together.

[hill.co.uk/kingsley-park](http://hill.co.uk/kingsley-park)

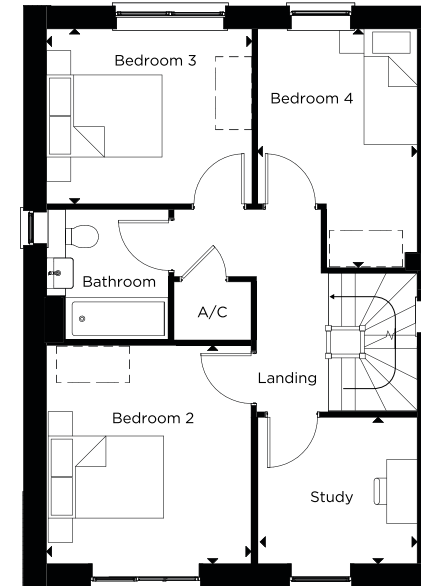


## The Olive



### SECOND FLOOR

Principal Bedroom  
4.1m x 3.4m      13'5" x 11'1"



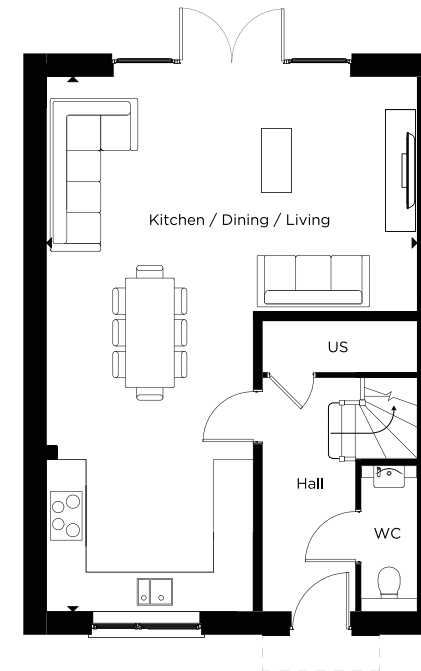
### FIRST FLOOR

Bedroom 2  
3.6m x 3.4m      11'9" x 11'1"

Bedroom 3  
2.9m x 3.4m      9'6" x 11'1"

Bedroom 4  
3.9m x 2.6m      12'9" x 8'6"

Study  
2.4m x 2.6m      7'10" x 8'6"



### GROUND FLOOR

Kitchen / Dining / Living  
8.8m x 6.1m      28'10" x 20'0"

US Utility Store C Cupboard A/C Airing Cupboard W Wardrobe [ ] Indicative wardrobe position [ ] Skylight - - - - Restricted head height (mm)

Floorplan layouts are not to scale, provide approximate measurements only and are subject to planning. Dimensions, which are taken from the indicated points of measurements are for guidance only and are not intended to be used for window treatments or items of furniture. Bathroom and kitchen layouts are indicative only and are subject to change. Wardrobe size and position may vary. The information contained within this document does not constitute part of any offer, contract or warranty. Whilst the plans have been prepared with all due care for convenience of the intending purchaser, the information herein is a preliminary guide only.