

# KINGSLEY PARK

BILLERICAY



Computer generated image is indicative only and represents The Iris.

## The Iris

### FIVE BEDROOM HOME

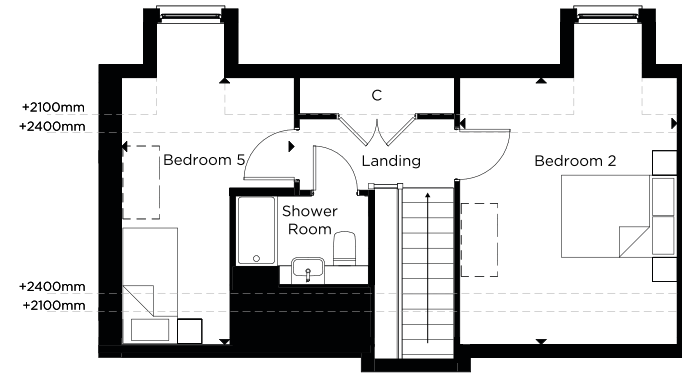
#### DETACHED HOMES 78 & 144

Our premium 5-bedroom homes redefine luxury family living, combining striking architecture with generous proportions and premium finishes throughout. Whether you're looking for home office space, guest accommodation, or room to entertain in style, these homes offer unmatched versatility. Set within a tranquil green enclave on the edge of Billericay, residents enjoy the best of both worlds - scenic surroundings with direct access to the town's shops, rail links to London, and top-rated schools. Elevate your lifestyle in one of Essex's most sought-after postcodes.

[hill.co.uk/kingsley-park](http://hill.co.uk/kingsley-park)

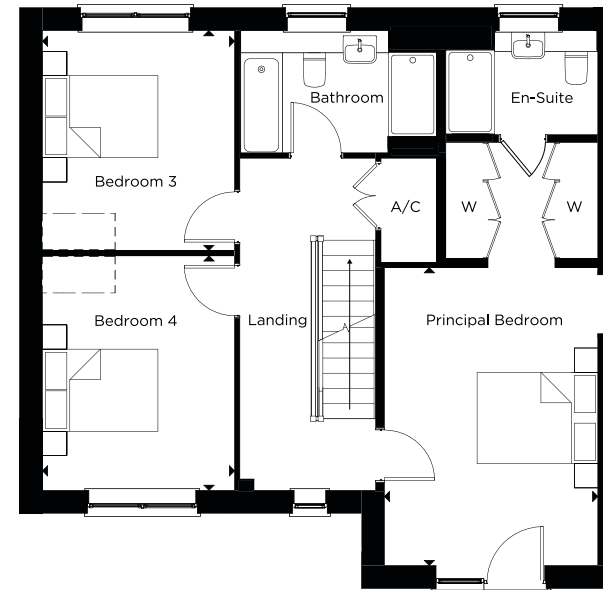


## The Iris



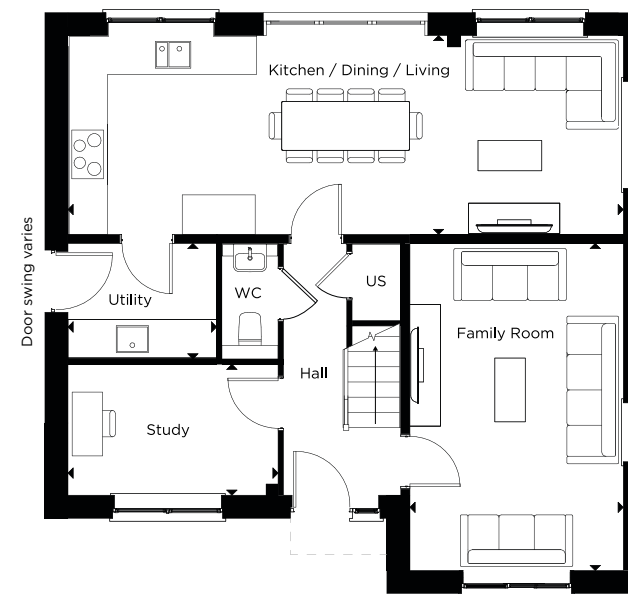
### SECOND FLOOR

Bedroom 2	4.4m x 3.6m	14'5" x 11'9"
Bedroom 5	4.4m x 2.8m	14'5" x 9'2"



### FIRST FLOOR

Principal Bedroom	4.9m x 3.5m	16'0" x 11'5"
Bedroom 3	3.6m x 3.1m	11'9" x 10'2"
Bedroom 4	3.8m x 3.1m	12'5" x 10'2"



### GROUND FLOOR

Kitchen / Dining / Living	3.3m x 9.1m	10'9" x 29'10"
Family Room	5.4m x 3.5m	17'8" x 11'5"
Utility Room	1.9m x 2.4m	6'2" x 7'10"
Study	2.1m x 3.4m	6'10" x 11'1"

US Utility Store C Cupboard A/C Airing Cupboard W Wardrobe [ ] Indicative wardrobe position - - - - - Restricted head height (mm)

Floorplan layouts are not to scale, provide approximate measurements only and are subject to planning. Dimensions, which are taken from the indicated points of measurements are for guidance only and are not intended to be used for window treatments or items of furniture. Bathroom and kitchen layouts are indicative only and are subject to change. Wardrobe size and position may vary. The information contained within this document does not constitute part of any offer, contract or warranty. Whilst the plans have been prepared with all due care for convenience of the intending purchaser, the information herein is a preliminary guide only.