

# The Lawrence

DETACHED HOUSE

5 BEDROOM

PLOTS: 2, 26, 28, 160



Ground floor

First floor

**Kitchen/Living/Dining**  
8.15m x 4.35m | 26'7" x 14'2"

**Living Room**  
5.40m x 3.90m | 17'7" x 12'9"

**Dining Room**  
4.50m x 3.30m | 14'7" x 10'8"

**Study**  
2.75m x 2.00m | 9'0" x 6'5"

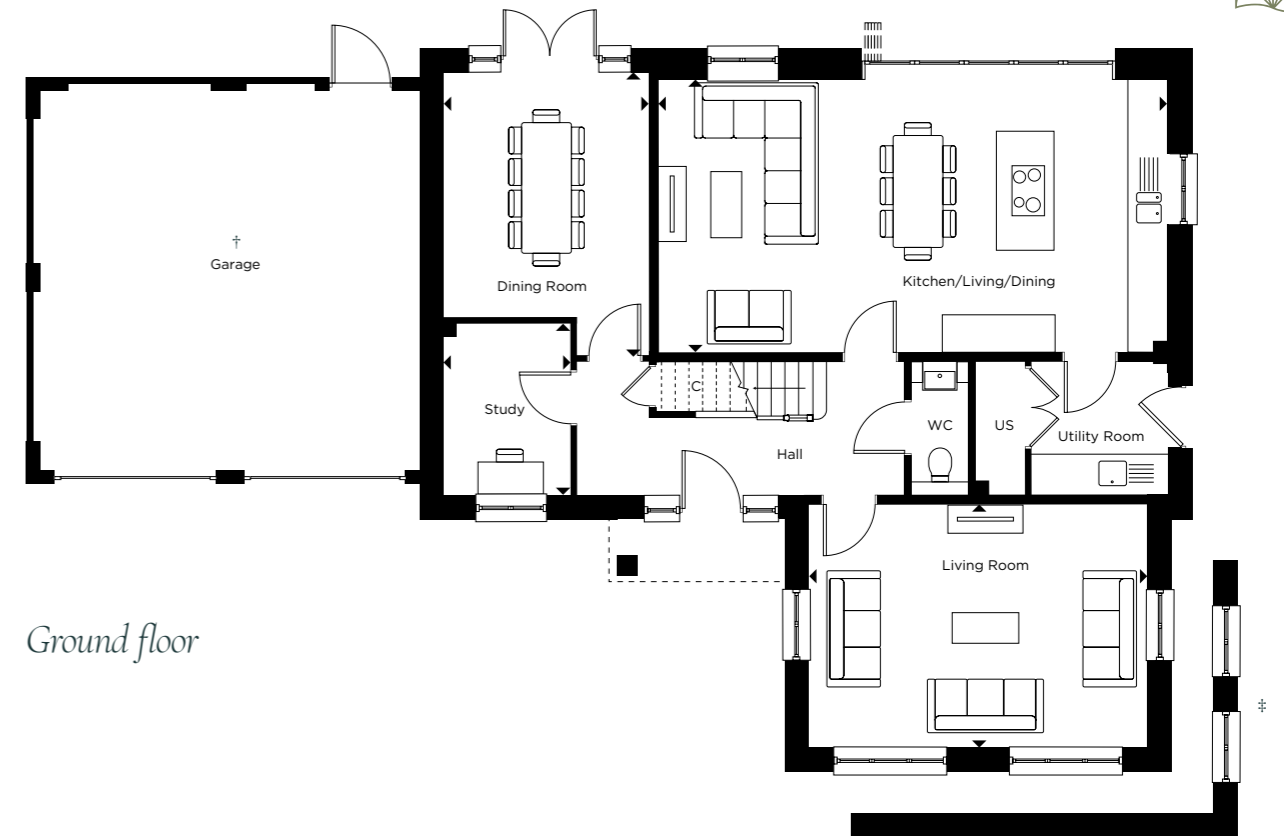
**Principal Bedroom**  
4.75m x 3.80m | 15'7" x 12'4"

**Bedroom 2**  
4.45m x 2.90m | 14'6" x 9'5"

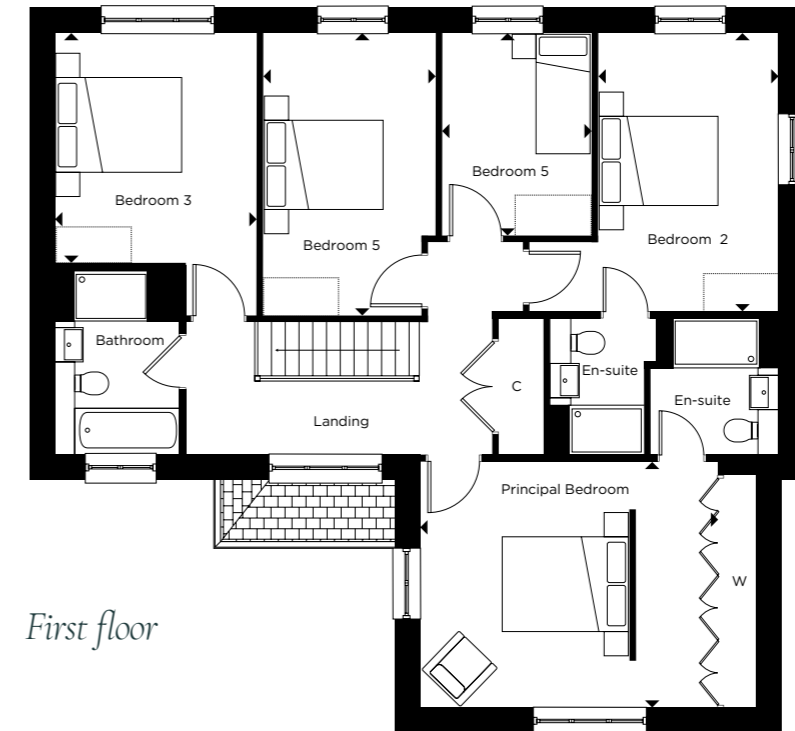
**Bedroom 3**  
3.75m x 3.20m | 12'3" x 10'4"

**Bedroom 4**  
4.50m x 2.70m | 14'7" x 8'8"

**Bedroom 5**  
3.25m x 2.35m | 10'7" x 7'7"



Ground floor



First floor

C = Cupboard | US = Utility Store | W = Wardrobe  
 - - - - = Indicative porch position | □ = Indicative wardrobe position

†Attached double garage applies to plot 28 & 160 only. Detached garage to other plots. §Window variant applies to plot 26 only. §Window does not apply to plot 26. Brickwork to exterior applies to plot 26 & 28. Partial tiles to exterior applies to plots 2. All floorplans are not to scale. Layouts provide approximate measurements only and are subject to planning. Dimensions, which are taken from the indicated points of measurement, are for guidance only and are not intended to be used for window treatments or items of furniture. Bathroom and kitchen layouts are indicative only and are subject to change. Wardrobe size and position may vary. The information contained within this document does not constitute part of any other, contract or warranty. Whilst the plans have been prepared with all due care for the convenience of the intending purchaser, the information contained herein is a preliminary guide only.