



The Lily Apartments

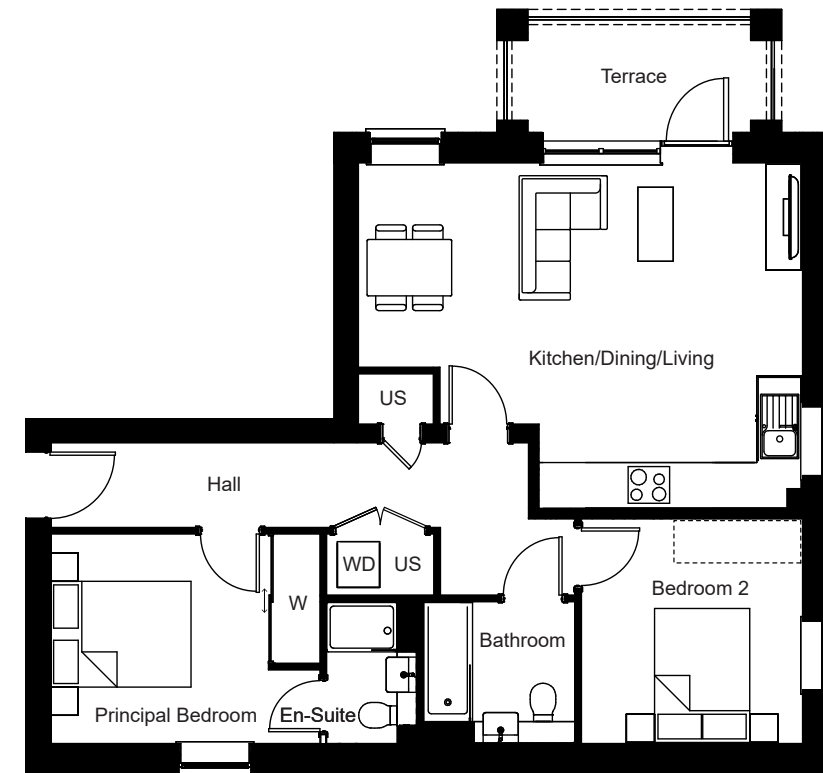
2 BEDROOM APARTMENT

APARTMENT 3

Offered through the council-backed Discount Market Sale scheme, eligible buyers can purchase up to 20% below full market value*

*To find out more about eligibility and terms and conditions, speak with our sales team.

The Lily Apartments



APARTMENT 3

Kitchen/Dining/Living	6.3m x 4.9m	20'8" x 16'1"
Principal Bedroom	3.0m x 3.8m	9'10" x 12'6"
Bedroom 2	3.1m x 3.2m	10'2" x 10'6"

US Utility Store A/C Airing Cupboard W Wardrobe [] Indicative wardrobe position

Floorplan layouts are not to scale, provide approximate measurements only and are subject to planning. Dimensions, which are taken from the indicated points of measurements are for guidance only and are not intended to be used for window treatments or items of furniture. Bathroom and kitchen layouts are indicative only and are subject to change. Wardrobe size and position may vary. The information contained within this document does not constitute part of any offer, contract or warranty. Whilst the plans have been prepared with all due care for convenience of the intending purchaser, the information herein is a preliminary guide only.