



THE TURNERS

5 BEDROOM HOUSE
PLOTS 60*, 64 & 70



External material to homes vary. Computer generated image is indicative only and represents Plot 70.

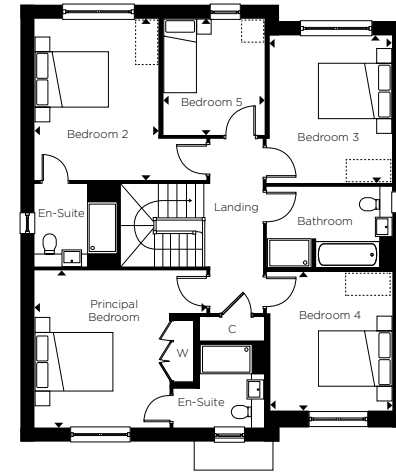
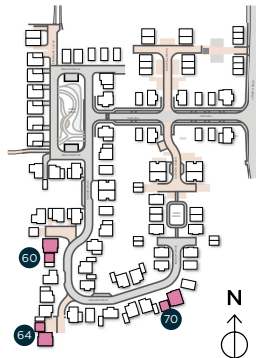
GROUND FLOOR

Kitchen/Dining	9.45 m x 3.75 m	31' 0" x 12' 3"
Living Room	4.50 m x 4.10 m	14' 9" x 13' 5"
Dining Room	3.20 m x 3.65 m	10' 5" x 11' 11"
Utility Room	2.20 m x 2.20 m	7' 2" x 7' 2"

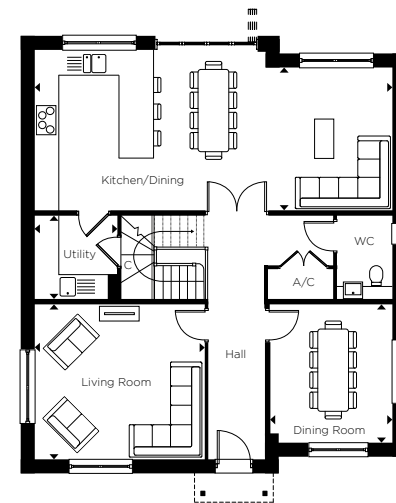
FIRST FLOOR

Principal Bedroom	4.55 m x 4.15 m	14' 11" x 13' 7"
Bedroom 2	3.30 m x 4.25 m	10' 9" x 13' 11"
Bedroom 3	3.20 m x 3.85 m	10' 5" x 12' 7"
Bedroom 4	3.20 m x 3.65 m	10' 5" x 11' 11"
Bedroom 5	2.65 m x 3.05 m	8' 8" x 10' 0"

*Handed to floorplan shown.



FIRST FLOOR



GROUND FLOOR

C - CUPBOARD W - WARDROBE A/C - AIRING CUPBOARD [] - INDICATIVE WARDROBE POSITION

All floorplans are not to scale. Layouts provide approximate measurements only and are subject to planning. Dimensions, which are taken from the indicated points of measurement, are for guidance only and are not intended to be used for window treatments or items of furniture. Bathroom and kitchen layouts are indicative only and are subject to change. Wardrobe size and position may vary. The total square footage given is an estimate only. In the event of your making an offer you should refer to the contract documentation for information and contractual provisions relating to net sales area. The information contained within this document does not constitute part of any offer, contract, or warranty. Whilst the plans have been prepared with all due care for the convenience of the intending purchaser, the information contained herein is a preliminary guide only.