



Computer generated image of plot 111 and indicative only.

# The Goddard

Five bedroom home

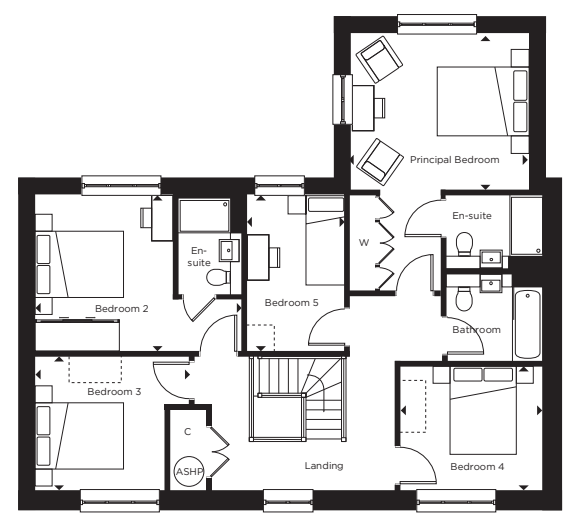
Plots: 108\*, 109, 110, 111, 112, 113\*, 114, 115, 116, 117\*

### Ground Floor

Kitchen	3.60m x 3.30m   11'9" x 10'9"
Family/Dining	4.10m x 7.15m   13'5" x 23'5"
Living	3.65m x 4.85m   11'11" x 15'10"
Study	3.65m x 2.60m   11'11" x 8'6"

### First Floor

Principal Bedroom	4.00m x 3.60m   13'1" x 11'9"
Bedroom 2	4.75m x 3.55m   15'7" x 11'7"
Bedroom 3	3.55m x 3.05m   11'7" x 10'0"
Bedroom 4	3.25m x 2.80m   10'7" x 9'2"
Bedroom 5	2.20m x 3.55m   7'2" x 11'7"



First Floor



Ground Floor

ASHP = Air Source Heat Pump Cylinder | C = Cupboard | W = Wardrobe  
 WC = Cloakroom | [ ] = Indicative wardrobe position

\*Denotes handed plot. All floorplans are not to scale. Layouts provide approximate measurements only and are subject to planning. Dimensions, which are taken from the indicated points of measurement, are for guidance only and are not intended to be used for window treatments or items of furniture. Bathroom and kitchen layouts are indicative only and are subject to change. Wardrobe size and position may vary. The information contained within this document does not constitute part of any offer, contract or warranty. Whilst the plans have been prepared with all due care for the convenience of the intending purchaser, the information contained herein is a preliminary guide only. Exterior treatments may vary, please speak to a Sales Executive for more information.

