



Computer generated image of plot 166 and indicative only.

The Bramley

Four bedroom home

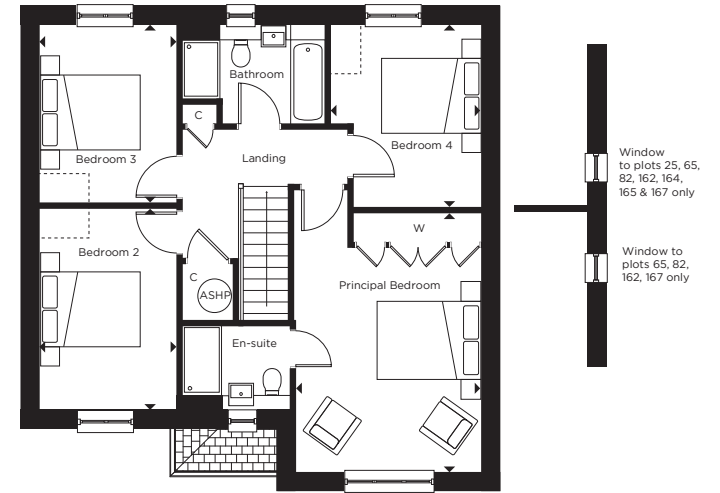
Plots: 19, 25, 65*, 66, 82, 83*, 154*, 155*, 161, 162*, 164, 165, 166, 167, 178*

Ground Floor

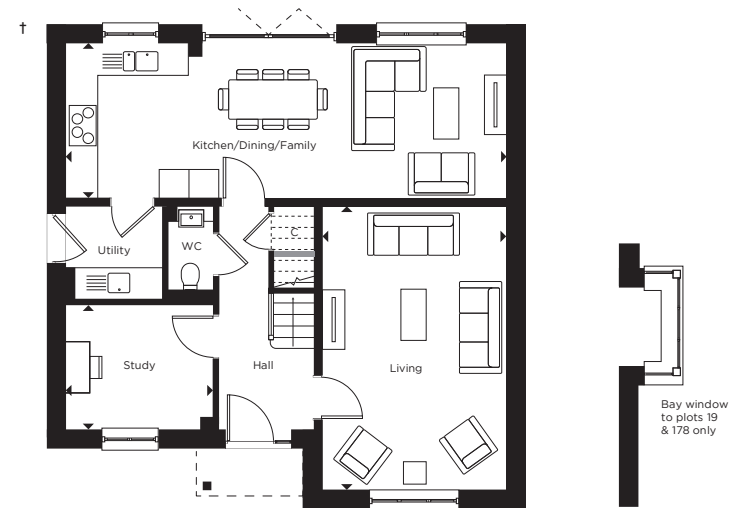
Kitchen/Dining/Family	8.90m x 3.10m 29'2" x 10'2"
Living	3.70m x 5.70m 12'1" x 18'8"
Study	2.95m x 2.50m 9'8" x 8'2"

First Floor

Principal Bedroom	3.70m x 5.20m 12'1" x 17'0"
Bedroom 2	2.75m x 4.05m 9'0" x 13'3"
Bedroom 3	2.75m x 3.60m 9'0" x 11'9"
Bedroom 4	3.00m x 3.65m 9'10" x 11'11"



First Floor



Ground Floor

ASHP = Air Source Heat Pump Cylinder | C = Cupboard | W = Wardrobe
WC = Cloakroom | [] = Indicative wardrobe position

*Denotes handed plot. †Garage attached to plots 82, 154 & 165. All floorplans are not to scale. Layouts provide approximate measurements only and are subject to planning. Dimensions, which are taken from the indicated points of measurement, are for guidance only and are not intended to be used for window treatments or items of furniture. Bathroom and kitchen layouts are indicative only and are subject to change. Wardrobe size and position may vary. The information contained within this document does not constitute part of any offer, contract or warranty. Whilst the plans have been prepared with all due care for the convenience of the intending purchaser, the information contained herein is a preliminary guide only. Exterior treatments may vary, please speak to a Sales Executive for more information.