

THE FRAMLINGHAM A

5 BEDROOM DETACHED HOUSE
PLOTS 1, 29*, 36, 41*, 42*, 43, 45, 48*, 50 & 51



Computer generated image of Plot 51 is indicative only. External materials vary, along with roof tiles.

GROUND FLOOR

Kitchen/Dining/Living	4.40 m x 10.45 m	14'5" x 34'3"
Family Room	3.65 m x 4.85 m	11'11" x 15'10"
Study	3.65 m x 1.80 m	11'11" x 5'10"
Utility	1.90 m x 2.40 m	6'2" x 7'10"

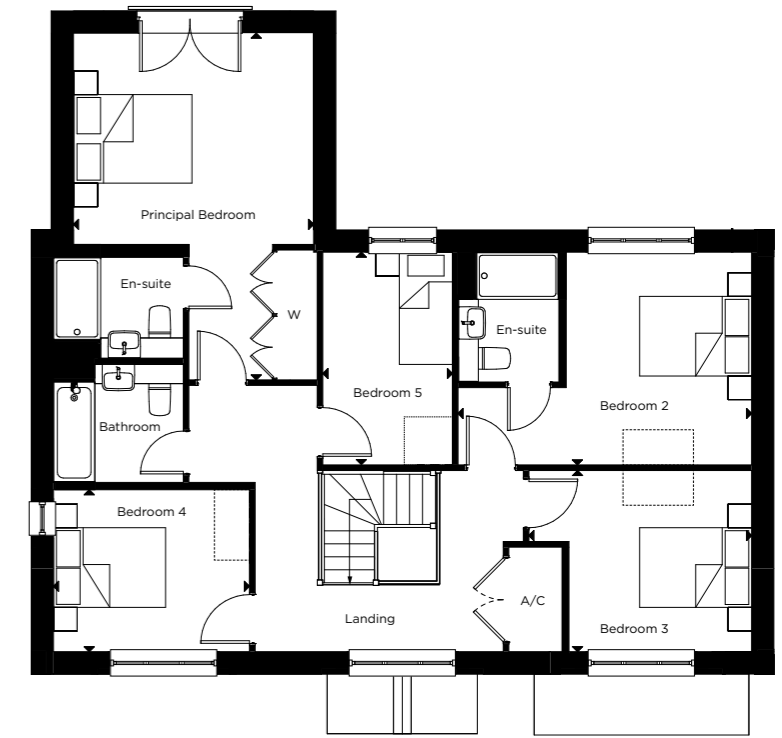
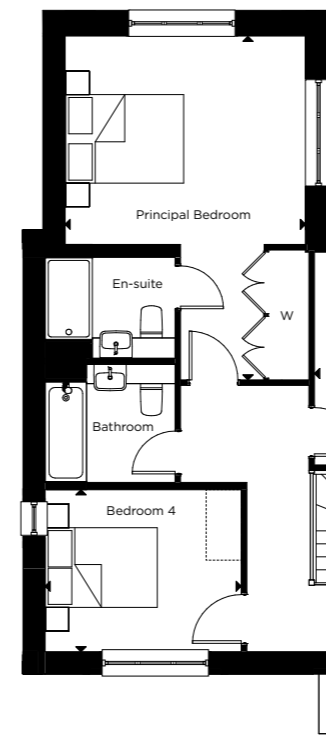
FIRST FLOOR

Principal Bedroom	4.05 m x 5.85 m	13'3" x 19'2"
Bedroom 2	4.95 m x 3.60 m	16'2" x 11'9"
Bedroom 3	3.75 m x 3.05 m	12'3" x 10'0"
Bedroom 4	3.30 m x 2.70 m	10'9" x 8'10"
Bedroom 5	2.20 m x 3.60 m	7'2" x 11'9"



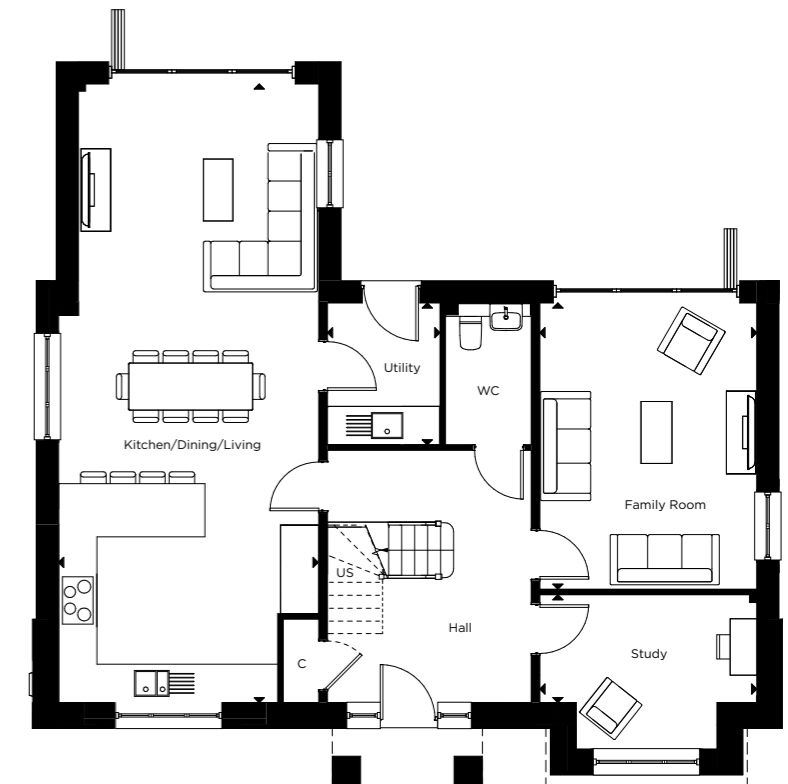
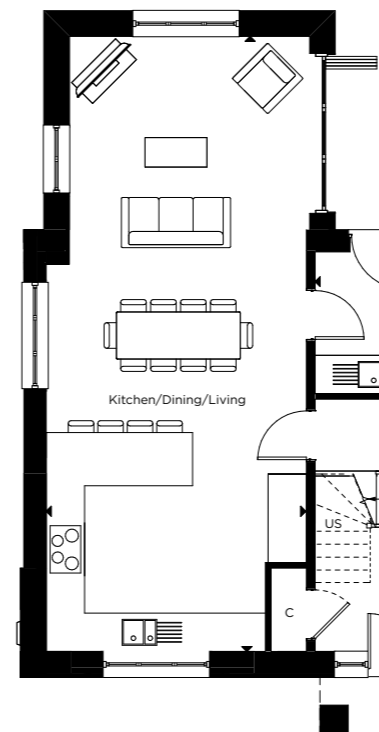
*Handed to floorplan shown

*Alternative Principal Bedroom layout for Plot 1



FIRST FLOOR

*Alternative Kitchen/Dining/Living layout for Plot 1



GROUND FLOOR

C - CUPBOARD US - UTILITY STORE W - WARDROBE A/C - AIRING CUPBOARD [---] - INDICATIVE WARDROBE POSITION

Floorplan layouts are not to scale. House layouts provide approximate measurements only and are subject to planning. Dimensions, which are taken from the indicated points of measurements are for guidance only and are not intended to be used for window treatments or items of furniture. Bathroom and kitchen layouts are indicative only and are subject to change. Wardrobe size and position may vary. The information contained within this document does not constitute part of any offer, contract or warranty. Whilst the plans have been prepared with all due care for convenience of the intending purchaser, the information herein is a preliminary guide only.