

THE CROMWELL

5 BEDROOM HOME

Plots 9, 21*, 40, 53*, 74



Computer generated image is indicative only and represents The Cromwell.

GROUND FLOOR

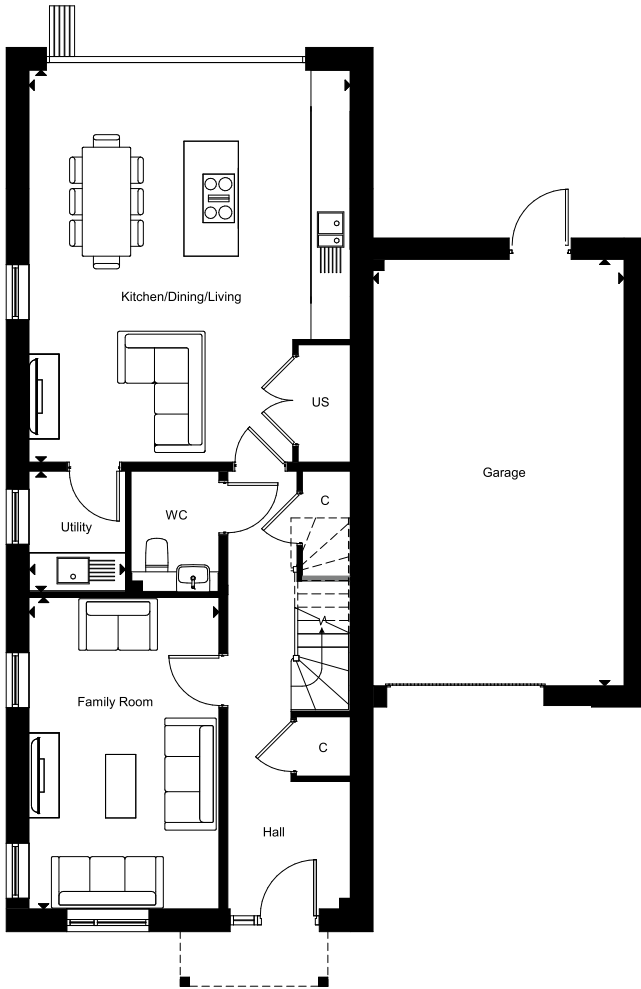
Kitchen/Dining/Living	5.3m x 6.5m	17'6" x 21'3"
Family Room	3.1m x 5.1m	10'6" x 16'11"
Garage	4.1m x 7.0m	13'6" x 23'1"
Utility	1.6m x 2.0m	5'2" x 6'5"

FIRST FLOOR

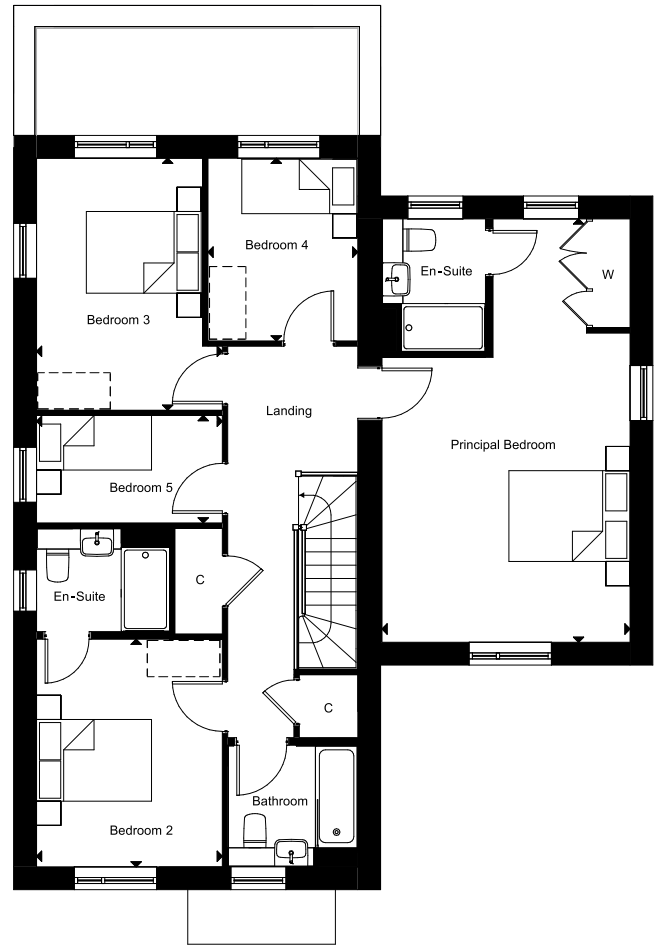
Principal Bedroom	4.1m x 7.0m	13'6" x 22'11"
Bedroom 2	3.1m x 3.8m	10'0" x 12'4"
Bedroom 3	3.1m x 4.2m	10'0" x 13'8"
Bedroom 4	2.5m x 3.0m	8'0" x 9'11"
Bedroom 5	3.1m x 1.8m	10'0" x 5'10"

TOTAL INTERNAL AREA - 167 SQ M/1,801 SQ FT

Floorplan layouts are not to scale, provide approximate measurements only and are subject to planning. Dimensions, which are taken from the indicated points of measurements are for guidance only and are not intended to be used for window treatments or items of furniture. Bathroom and kitchen layouts are indicative only and are subject to change. Wardrobe size and position may vary. The information contained within this document does not constitute part of any offer, contract or warranty. Whilst the plans have been prepared with all due care for convenience of the intending purchaser, the information herein is a preliminary guide only.



GROUND FLOOR



FIRST FLOOR