

# THE FARMHOUSE

4 BEDROOM HOUSE  
LINK-DETACHED: PLOT 92\*  
SEMI-DETACHED: PLOTS 5, 6\*, 11, 12\*, 79 & 80\*



Computer generated image of plot 79 to 80 is indicative only. External finishes may vary.

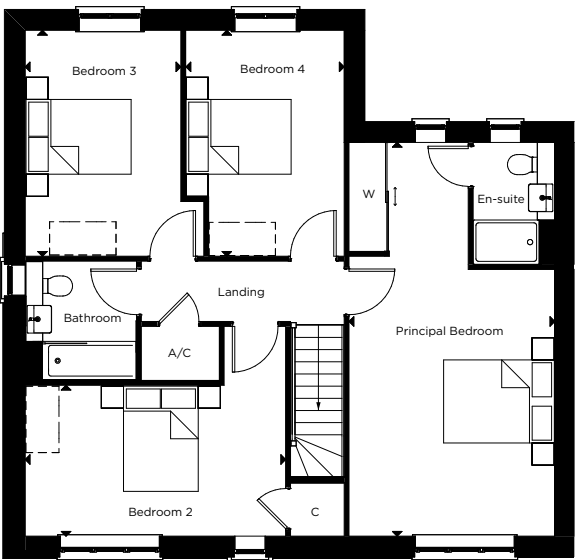
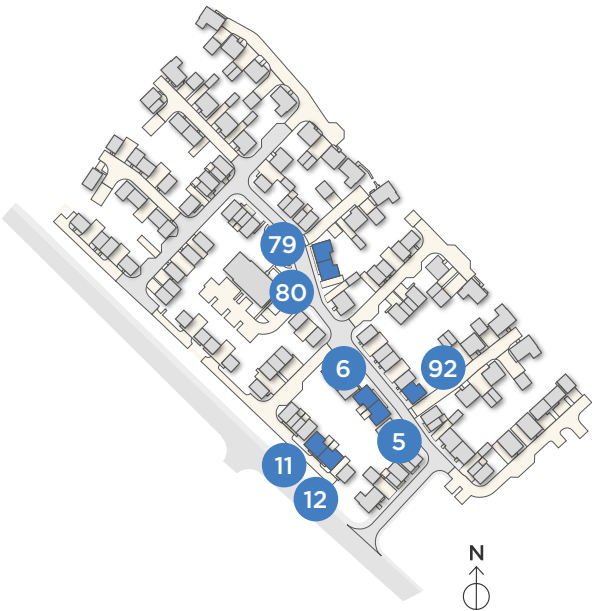
### GROUND FLOOR

Kitchen/Dining	3.10m x 5.10m	10'0" x 16'8"
Living Room	5.80m x 4.10m	19'0" x 13'4"
Garage+	3.40m x 7.20m	11'6" x 23'6"

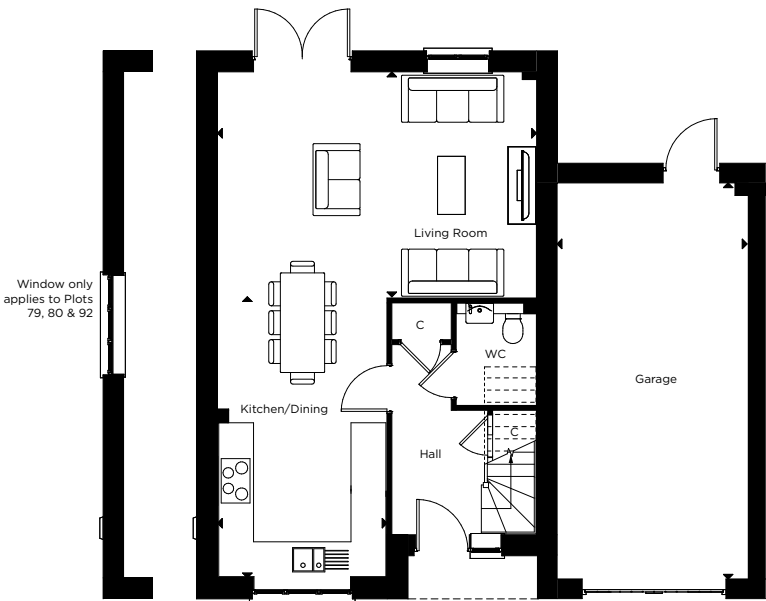
### FIRST FLOOR

Principal Bedroom	3.70m x 7.10m	12'0" x 23'4"
Bedroom 2	4.70m x 2.70m	15'6" x 8'11"
Bedroom 3	2.80m x 4.10m	9'0" x 13'5"
Bedroom 4	2.90m x 4.10m	9'6" x 13'5"

\*Handed to floorplan shown. +Garage to Plots 79, 80 & 92 only.



FIRST FLOOR



GROUND FLOOR

C - CUPBOARD W - WARDROBE A/C - AIRING CUPBOARD [ ] - INDICATIVE WARDROBE POSITION

All floorplans are not to scale. Layouts provide approximate measurements only and are subject to planning. Dimensions, which are taken from the indicated points of measurement, are for guidance only and are not intended to be used for window treatments or items of furniture. Bathroom and kitchen layouts are indicative only and are subject to change. Wardrobe size and position may vary. The total square footage given is an estimate only. In the event of your making an offer you should refer to the contract documentation for information and contractual provisions relating to net sales area. The information contained within this document does not constitute part of any offer, contract, or warranty. Whilst the plans have been prepared with all due care for the convenience of the intending purchaser, the information contained herein is a preliminary guide only.