

THE FOXGLOVE

5 BEDROOM HOUSE
DETACHED: PLOTS 1, 64, 68, 71*, 75, 86 & 96*



GROUND FLOOR

Kitchen/Dining/Living	4.40m x 10.50m	14'6" x 34'5"
Family Room	3.70m x 4.90m	12'0" x 15'11"
Study	3.70m x 1.80m	12'0" x 6'0"
Utility	1.90m x 2.40m	6'2" x 7'10"

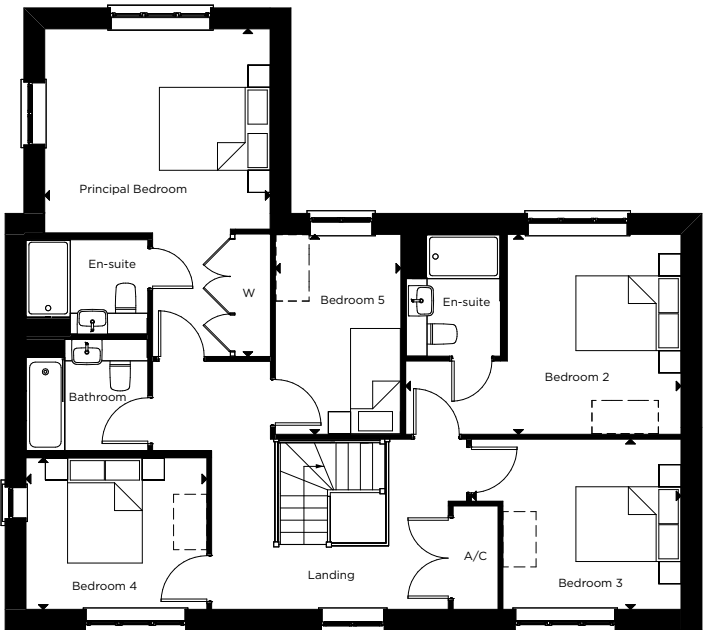
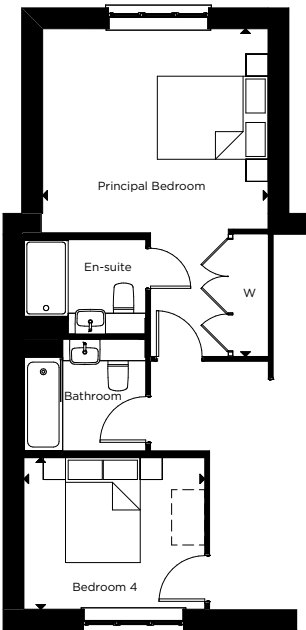
FIRST FLOOR

Principal Bedroom	4.10m x 5.90m	13'4" x 19'6"
Bedroom 2	5.00 x 3.60m	16'4" x 12'0"
Bedroom 3	3.80m x 3.10m	12'5" x 10'0"
Bedroom 4	3.30m x 2.70m	10'9" x 9'0"
Bedroom 5	2.30m x 3.60m	7'5" x 12'0"

*Handed to floorplan shown.

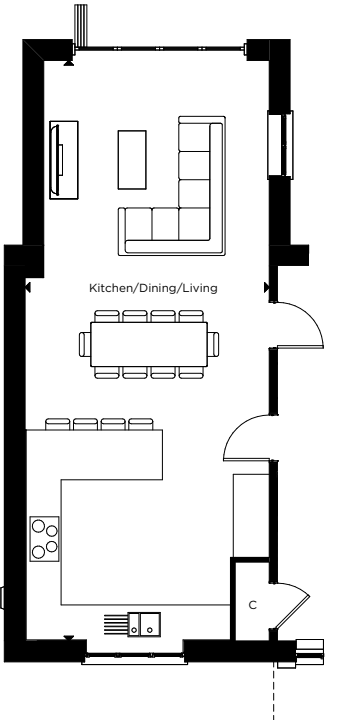


Only applies to plot 96



FIRST FLOOR

Only applies to plot 96



GROUND FLOOR

Window only applies to plots 68, 71 & 75

C - CUPBOARD W - WARDROBE A/C - AIRING CUPBOARD [] - INDICATIVE WARDROBE POSITION

All floorplans are not to scale. Layouts provide approximate measurements only and are subject to planning. Dimensions, which are taken from the indicated points of measurement, are for guidance only and are not intended to be used for window treatments or items of furniture. Bathroom and kitchen layouts are indicative only and are subject to change. Wardrobe size and position may vary. The total square footage given is an estimate only. In the event of your making an offer you should refer to the contract documentation for information and contractual provisions relating to net sales area. The information contained within this document does not constitute part of any offer, contract, or warranty. Whilst the plans have been prepared with all due care for the convenience of the intending purchaser, the information contained herein is a preliminary guide only.