

# THE LINNET

2 BEDROOM HOUSE  
PLOTS 57, 66\*, 78 & 90\*



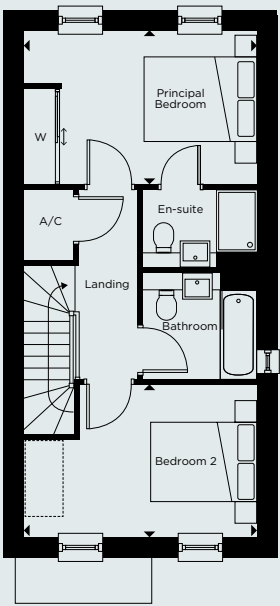
## GROUND FLOOR

Kitchen/Dining/Living	4.40m x 9.55m	14'5" x 31'3"
-----------------------	---------------	---------------

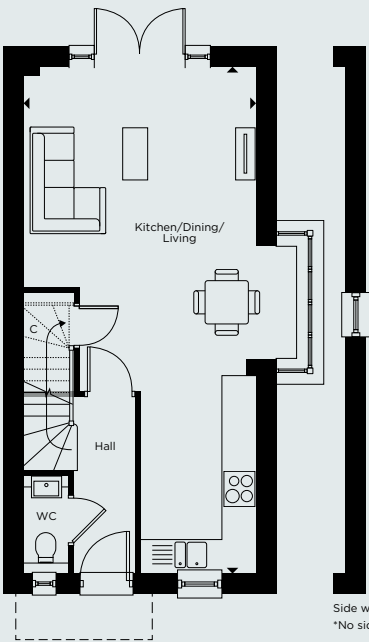
## FIRST FLOOR

Principal Bedroom	4.40m x 2.90m	14'5" x 9'6"
Bedroom 2	4.40m x 2.85m	14'5" x 9'4"

\*Handed to floorplan shown.



FIRST FLOOR



Side window to plot 90  
\*No side window to plot 78

GROUND FLOOR

C - CUPBOARD W - WARDROBE A/C - AIRING CUPBOARD [ ] - INDICATIVE WARDROBE POSITION

Floorplan layouts are not to scale. House layouts provide approximate measurements only and are subject to planning. Dimensions, which are taken from the indicated points of measurements are for guidance only and are not intended to be used for window treatments or items of furniture. Bathroom and kitchen layouts are indicative only and are subject to change. Wardrobe size and position may vary. The information contained within this document does not constitute part of any offer, contract or warranty. Whilst the plans have been prepared with all due care for convenience of the intending purchaser, the information herein is a preliminary guide only.