

THE IRIS

5 BEDROOM HOUSE

DETACHED: PLOTS 95* & 109



Computer generated image of plot 109 is indicative only. External finishes may vary.

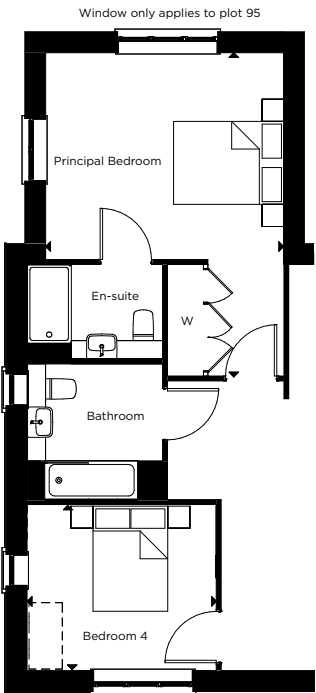
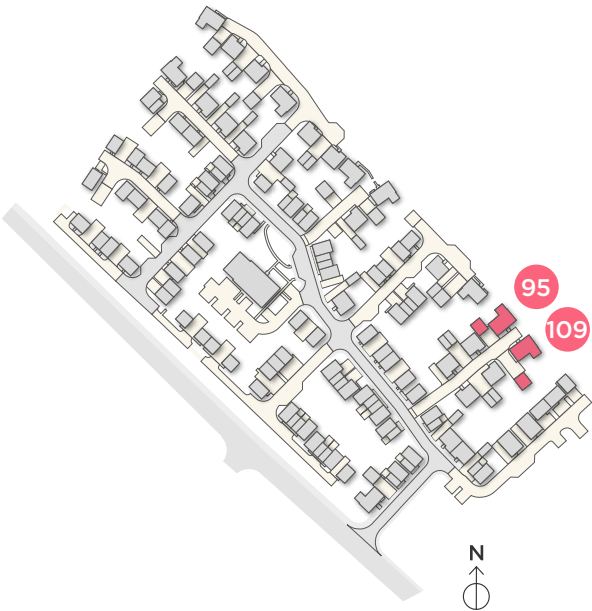
GROUND FLOOR

Kitchen/Dining/Living	4.60m x 11.20m	15'0" x 36'7"
Family Room	3.50m x 5.00m	11'6" x 16'4"
Study	3.50m x 2.30m	11'6" x 7'6"
Utility	2.40m x 2.20m	8'0" x 7'3"

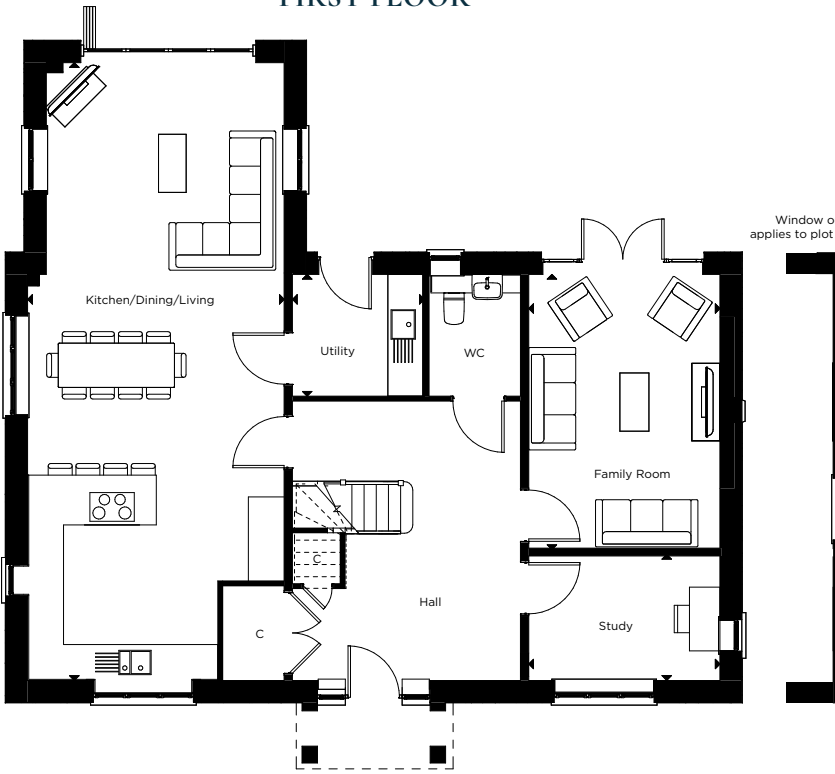
FIRST FLOOR

Principal Bedroom	4.30m x 5.90m	14'1" x 19'0"
Bedroom 2	3.50m x 3.70m	11'6" x 12'0"
Bedroom 3	3.50m x 3.60m	11'6" x 11'6"
Bedroom 4	3.40m x 3.00m	11'3" x 10'0"
Bedroom 5	2.90m x 3.60m	9'5" x 12'0"

*Handed to floorplan shown.



FIRST FLOOR



GROUND FLOOR

C - CUPBOARD W - WARDROBE A/C - AIRING CUPBOARD [] - INDICATIVE WARDROBE POSITION

All floorplans are not to scale. Layouts provide approximate measurements only and are subject to planning. Dimensions, which are taken from the indicated points of measurement, are for guidance only and are not intended to be used for window treatments or items of furniture. Bathroom and kitchen layouts are indicative only and are subject to change. Wardrobe size and position may vary. The total square footage given is an estimate only. In the event of your making an offer you should refer to the contract documentation for information and contractual provisions relating to net sales area. The information contained within this document does not constitute part of any offer, contract, or warranty. Whilst the plans have been prepared with all due care for the convenience of the intending purchaser, the information contained herein is a preliminary guide only.