

WREN HOUSE



KEW
BRIDGE
RISE



Computer generated image based on view from Apartment 168 is indicative only



Stunning panoramas on your doorstep
and bespoke details that make your
home truly yours – this is a place that
exceeds expectations in every way.

Wren House gracefully embodies the enchanting essence of the nearby gardens at Syon Park and Kew Gardens, providing stunning views of the Eastern and Western courtyards. Conveniently located near Kew Bridge Station, commuting to work is effortless. The harmonious blend of light, space, and inspired design creates inviting spaces that you'll always look forward to returning to. With impressive residents-only facilities and podium gardens, Wren House offers a lifestyle that's elevated in every sense of the word.

Wren
House



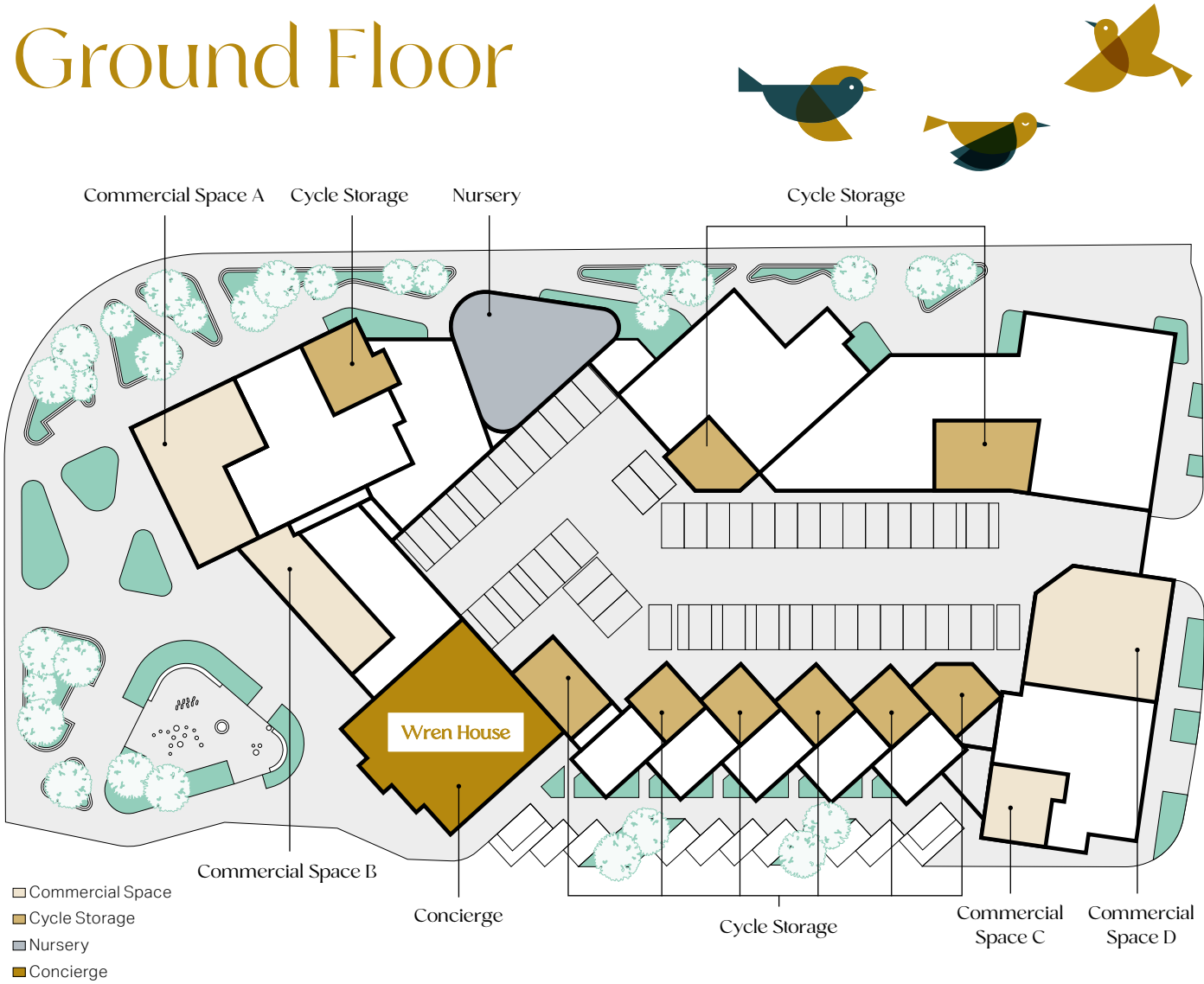


The information contained within this document does not constitute part of any offer, contract or warranty. Whilst the plans have been prepared with all due care for the convenience of the intending purchaser, the information contained herein is a preliminary guide only. Areas such as roads, paths, and patios plus trees and landscaping are indicative only and may vary.

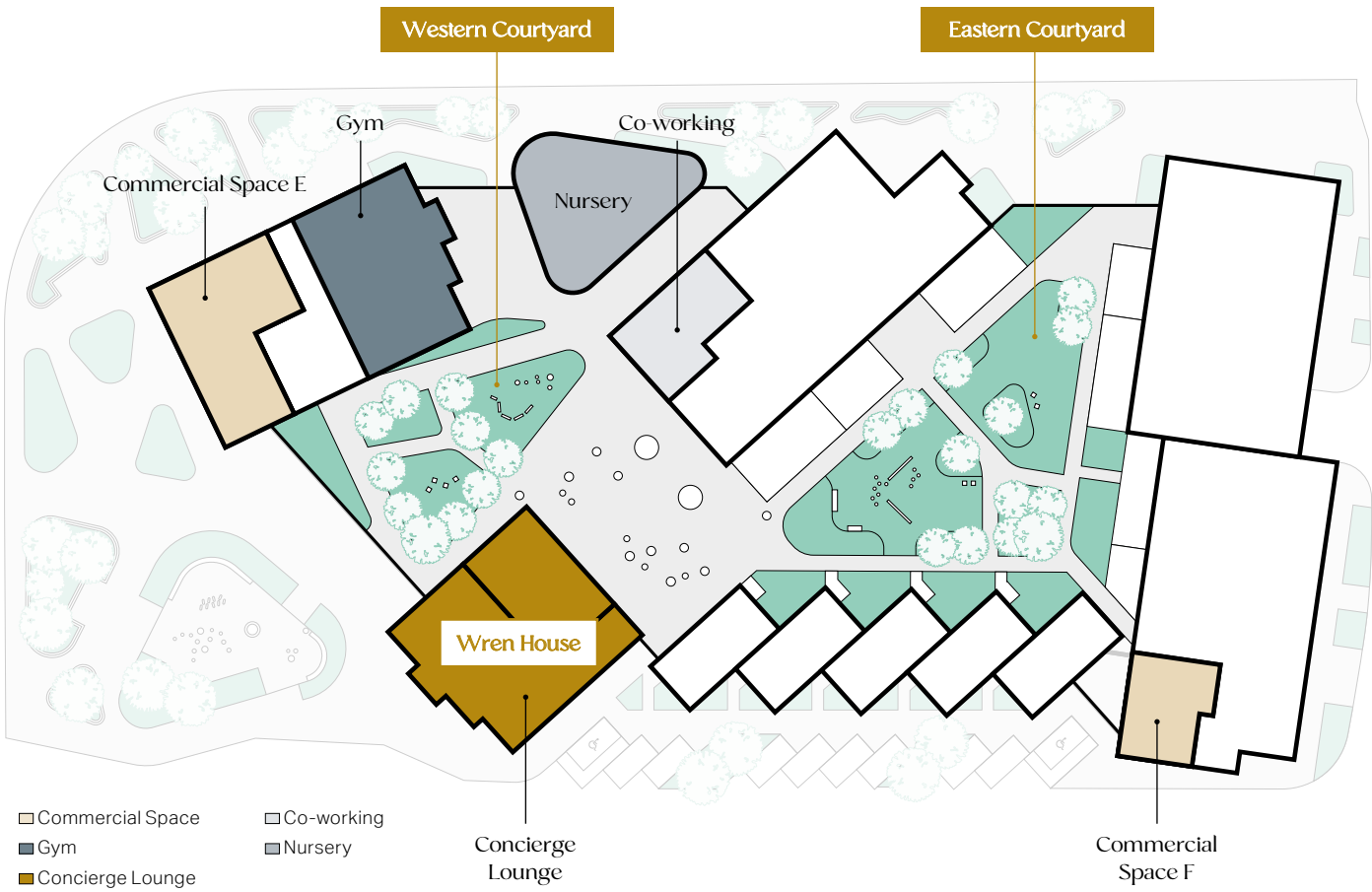
Kew Bridge Rise from the sky.

Nestled between the Western and Eastern Courtyards, Wren House is in a prime position for garden views. And there will be plenty of opportunities to enjoy them as each home has a private balcony. With a nursery, residents-only gym and co-working areas all on site, and the added benefit of the concierge located within Wren House: everything you could need (and more) is within minutes from your front door.

Ground Floor



First Floor



THE COURTYARDS

Green in every direction. Wren house has been designed to offer brilliant views across the Eastern and Western courtyards. From the concierge and on-site nursery to the multiple open spaces; every home has easy access to facilities and its own private balcony, terrace or winter garden.



Floor 2

PLOT 104
TYPE 3I
1 BEDROOM APARTMENT

Kitchen / Dining / Living	7.65m x 3.20m	25'1" x 10'6"
Bedroom	4.70m x 3.30m	15'6" x 10'10"
Balcony	1.55m x 3.30m	5'1" x 10'9"

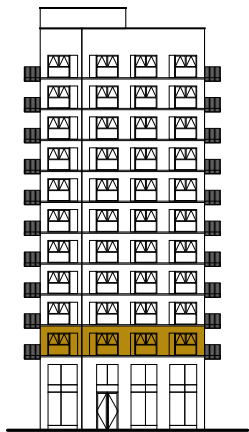
PLOT 105
TYPE O9
2 BEDROOM APARTMENT

Kitchen / Dining / Living	4.00m x 5.80m	13'2" x 19'0"
Principal Bedroom	3.50m x 3.85m	11'6" x 12'7"
Bedroom 2	4.20m x 2.65m	13'9" x 8'9"
Balcony	1.55m x 4.65m	5'1" x 15'3"

PLOT 106
TYPE O5
2 BEDROOM APARTMENT

Kitchen / Dining / Living	4.10m x 5.85m	13'5" x 19'3"
Principal Bedroom	3.20m x 3.80m	10'7" x 12'6"
Bedroom 2	4.30m x 2.95m	14'1" x 9'9"
Balcony	1.55m x 4.65m	5'1" x 15'3"

SOUTH ELEVATION



KEY

- One bedroom
- Two bedroom
- Measurements
- W

 Wardrobe
- C

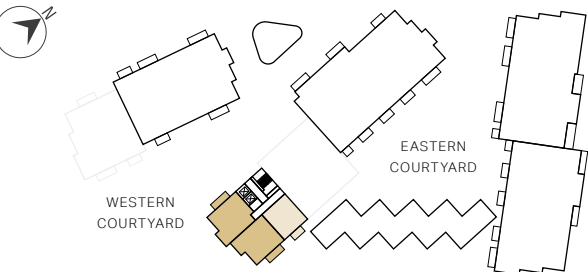
 Cupboard
- Indicative Wardrobe Position
- US

 Utility Store
- WD

 Washer Dryer
- R

 Riser Cupboard

WREN HOUSE



Apartment layouts provide approximate measurements only and are subject to planning. Dimensions, which are taken from the indicated points of measurements are for guidance only and are not intended to be used for window treatments or items of furniture. Bathroom and kitchen layouts are indicative only and are subject to change. Wardrobe size and position may vary. The information contained within this document does not constitute part of any offer, contract or warranty. Whilst the plans have been prepared with all due care for convenience of the intending purchaser, the information herein is a preliminary guide only.



*Reduced head height at 2075mm to plot 104

Floor 3

PLOT 107
TYPE O6
2 BEDROOM APARTMENT

Kitchen / Dining / Living	7.70m x 3.80m	25'3" x 12'5"
Principal Bedroom	5.15m x 3.35m	16'10" x 11'1"
Bedroom 2	3.85m x 2.90m	12'7" x 9'6"
Balcony	1.55m x 4.65m	5'1" x 15'3"

PLOT 108
TYPE I7
2 BEDROOM APARTMENT

Kitchen / Dining / Living	9.95m x 3.30m	32'9" x 10'10"
Principal Bedroom	5.55m x 3.00m	18'3" x 9'10"
Bedroom 2	5.25m x 3.25m	17'3" x 10'9"
Balcony 1	1.55m x 3.30m	5'1" x 10'9"
Balcony 2	1.55m x 3.15m	5'1" x 10'5"

PLOTS 109, 110 & 111
TYPE O2
1 BEDROOM APARTMENT

Kitchen / Dining / Living	7.75m x 3.20m	25'5" x 10'7"
Bedroom	4.90m x 3.25m	16'0" x 10'7"
Balcony	1.55m x 3.30m	5'1" x 10'9"

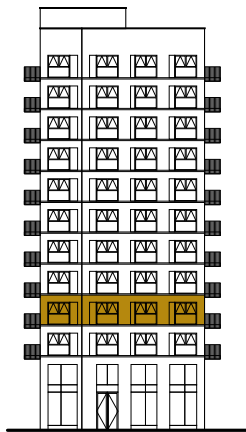
PLOT 112
TYPE O9
2 BEDROOM APARTMENT

Kitchen / Dining / Living	4.00m x 5.80m	13'2" x 19'0"
Principal Bedroom	3.50m x 3.85m	11'6" x 12'7"
Bedroom 2	4.20m x 2.65m	13'9" x 8'9"
Balcony	1.55m x 4.65m	5'1" x 15'3"

PLOT 113
TYPE O5
2 BEDROOM APARTMENT

Kitchen / Dining / Living	4.10m x 5.85m	13'5" x 19'3"
Principal Bedroom	3.20m x 3.80m	10'7" x 12'6"
Bedroom 2	4.30m x 2.95m	14'1" x 9'9"
Balcony	1.55m x 4.65m	5'1" x 15'3"

SOUTH ELEVATION



KEY

- One bedroom

● Two bedroom
- ↔ Measurements

W Wardrobe

C Cupboard

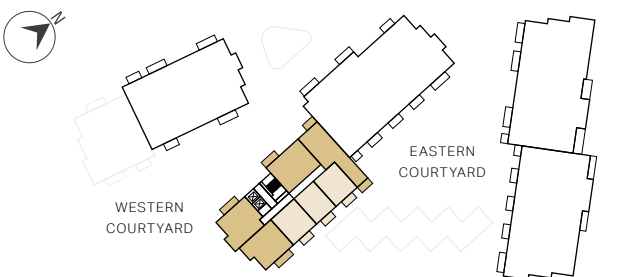
⋮ Indicative Wardrobe Position

US Utility Store

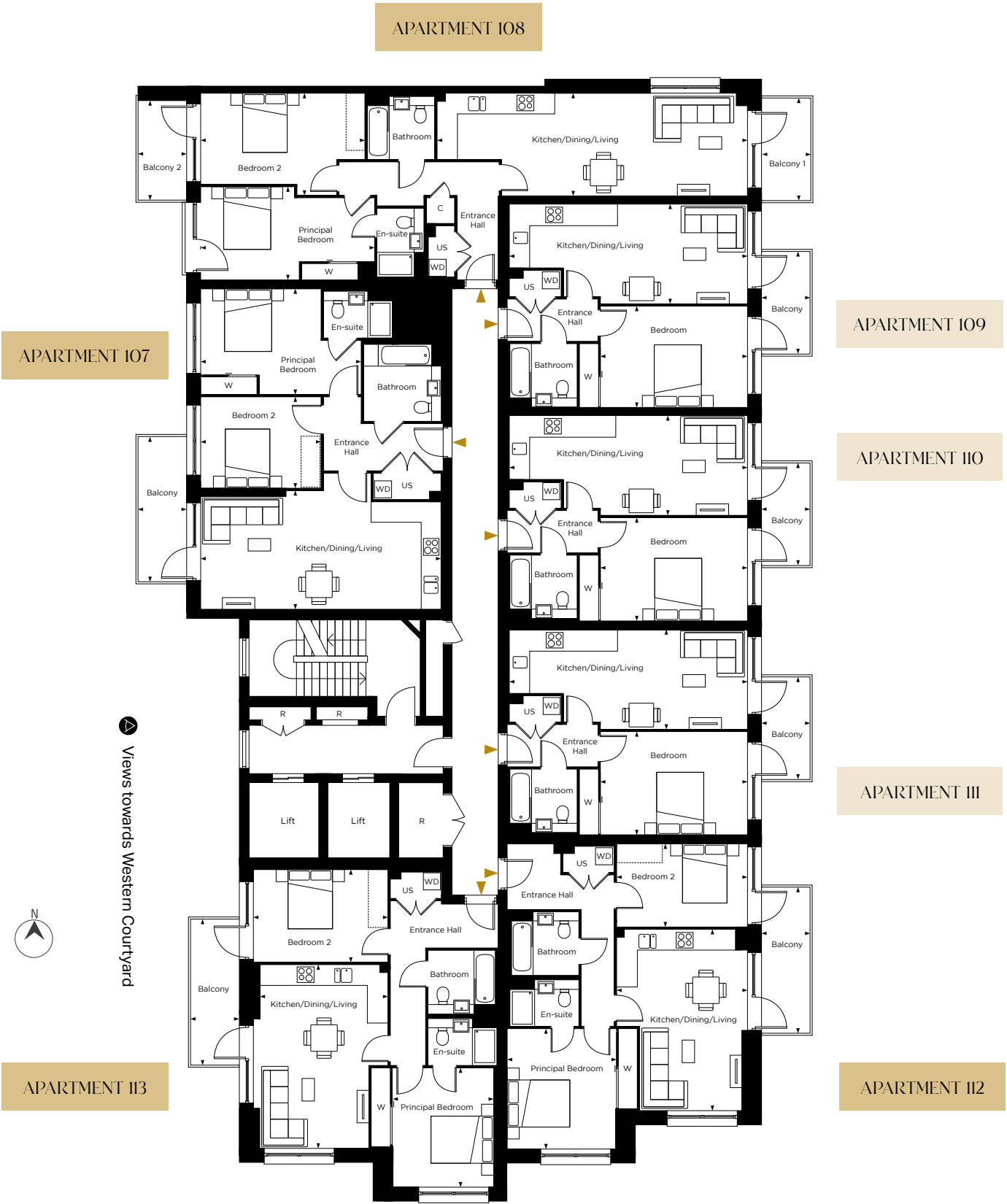
WD Washer Dryer

R Riser Cupboard

WREN HOUSE



Apartment layouts provide approximate measurements only and are subject to planning. Dimensions, which are taken from the indicated points of measurements are for guidance only and are not intended to be used for window treatments or items of furniture. Bathroom and kitchen layouts are indicative only and are subject to change. Wardrobe size and position may vary. The information contained within this document does not constitute part of any offer, contract or warranty. Whilst the plans have been prepared with all due care for convenience of the intending purchaser, the information herein is a preliminary guide only.



Floor 4

PLOT 114
TYPE O6
2 BEDROOM APARTMENT

Kitchen / Dining / Living	7.70m x 3.80m	25'3" x 12'5"
Principal Bedroom	5.15m x 3.35m	16'10" x 11'1"
Bedroom 2	3.85m x 2.90m	12'7" x 9'6"
Balcony	1.55m x 4.65m	5'1" x 15'3"

PLOT 115
TYPE I7
2 BEDROOM APARTMENT

Kitchen / Dining / Living	9.95m x 3.30m	32'9" x 10'10"
Principal Bedroom	5.55m x 3.00m	18'3" x 9'10"
Bedroom 2	5.25m x 3.25m	17'3" x 10'9"
Balcony 1	1.55m x 3.30m	5'1" x 10'9"
Balcony 2	1.55m x 3.15m	5'1" x 10'5"

PLOTS 116, 117 & 118
TYPE O2
1 BEDROOM APARTMENT

Kitchen / Dining / Living	7.75m x 3.20m	25'5" x 10'7"
Bedroom	4.90m x 3.25m	16'0" x 10'7"
Balcony	1.55m x 3.30m	5'1" x 10'9"

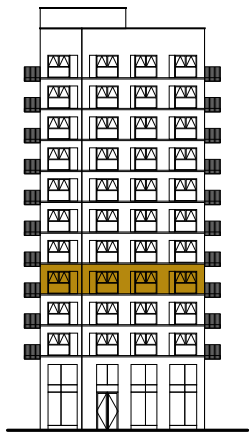
PLOT 119
TYPE O9
2 BEDROOM APARTMENT

Kitchen / Dining / Living	4.00m x 5.80m	13'2" x 19'0"
Principal Bedroom	3.50m x 3.85m	11'6" x 12'7"
Bedroom 2	4.20m x 2.65m	13'9" x 8'9"
Balcony	1.55m x 4.65m	5'1" x 15'3"

PLOT 120
TYPE O5
2 BEDROOM APARTMENT

Kitchen / Dining / Living	4.10m x 5.85m	13'5" x 19'3"
Principal Bedroom	3.20m x 3.80m	10'7" x 12'6"
Bedroom 2	4.30m x 2.95m	14'1" x 9'9"
Balcony	1.55m x 4.65m	5'1" x 15'3"

SOUTH ELEVATION



KEY

- One bedroom
- Two bedroom
- Measurements
- W

 Wardrobe
- C

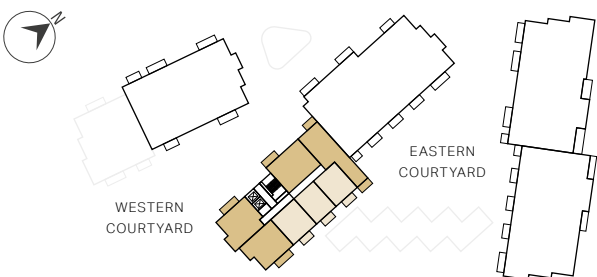
 Cupboard
- Indicative Wardrobe Position
- US

 Utility Store
- WD

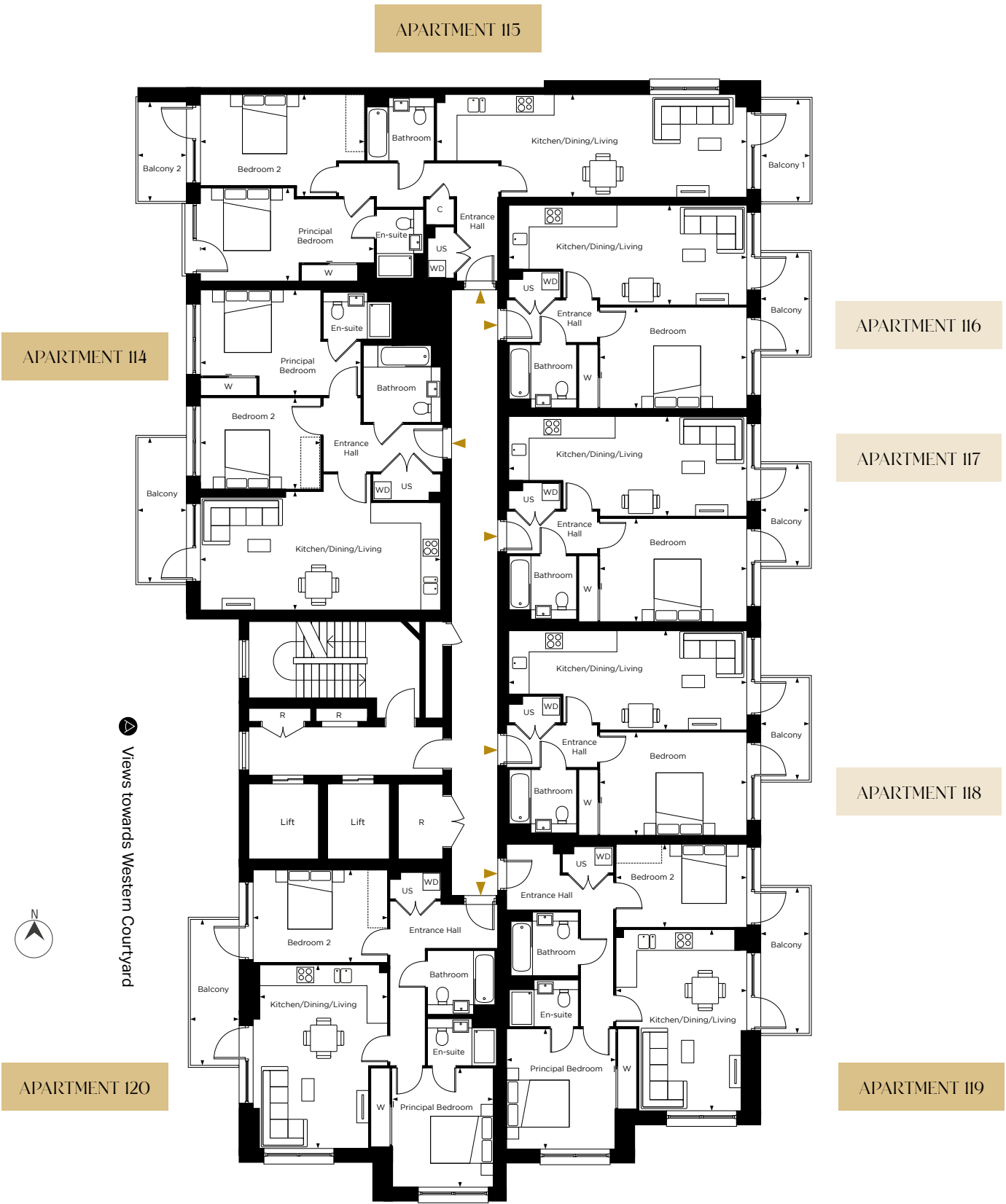
 Washer Dryer
- R

 Riser Cupboard

WREN HOUSE



Apartment layouts provide approximate measurements only and are subject to planning. Dimensions, which are taken from the indicated points of measurements are for guidance only and are not intended to be used for window treatments or items of furniture. Bathroom and kitchen layouts are indicative only and are subject to change. Wardrobe size and position may vary. The information contained within this document does not constitute part of any offer, contract or warranty. Whilst the plans have been prepared with all due care for convenience of the intending purchaser, the information herein is a preliminary guide only.



Floor 5

PLOT 121
TYPE O6
2 BEDROOM APARTMENT

Kitchen / Dining / Living	7.70m x 3.80m	25'3" x 12'5"
Principal Bedroom	5.15m x 3.35m	16'10" x 11'1"
Bedroom 2	3.85m x 2.90m	12'7" x 9'6"
Balcony	1.55m x 4.65m	5'1" x 15'3"

PLOT 122
TYPE I7
2 BEDROOM APARTMENT

Kitchen / Dining / Living	9.95m x 3.30m	32'9" x 10'10"
Principal Bedroom	5.55m x 3.00m	18'3" x 9'10"
Bedroom 2	5.25m x 3.25m	17'3" x 10'9"
Balcony 1	1.55m x 3.30m	5'1" x 10'9"
Balcony 2	1.55m x 3.15m	5'1" x 10'5"

PLOTS 123, 124 & 125
TYPE O2
1 BEDROOM APARTMENT

Kitchen / Dining / Living	7.75m x 3.20m	25'5" x 10'7"
Bedroom	4.90m x 3.25m	16'0" x 10'7"
Balcony	1.55m x 3.30m	5'1" x 10'9"

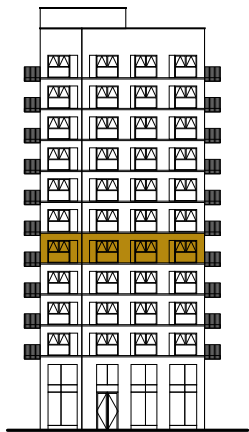
PLOT 126
TYPE O9
2 BEDROOM APARTMENT

Kitchen / Dining / Living	4.00m x 5.80m	13'2" x 19'0"
Principal Bedroom	3.50m x 3.85m	11'6" x 12'7"
Bedroom 2	4.20m x 2.65m	13'9" x 8'9"
Balcony	1.55m x 4.65m	5'1" x 15'3"

PLOT 127
TYPE O5
2 BEDROOM APARTMENT

Kitchen / Dining / Living	4.10m x 5.85m	13'5" x 19'3"
Principal Bedroom	3.20m x 3.80m	10'7" x 12'6"
Bedroom 2	4.30m x 2.95m	14'1" x 9'9"
Balcony	1.55m x 4.65m	5'1" x 15'3"

SOUTH ELEVATION



KEY

- One bedroom
- Two bedroom
- Measurements
- W

 Wardrobe
- C

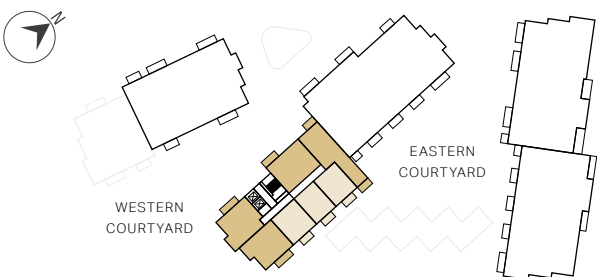
 Cupboard
- Indicative Wardrobe Position
- US

 Utility Store
- WD

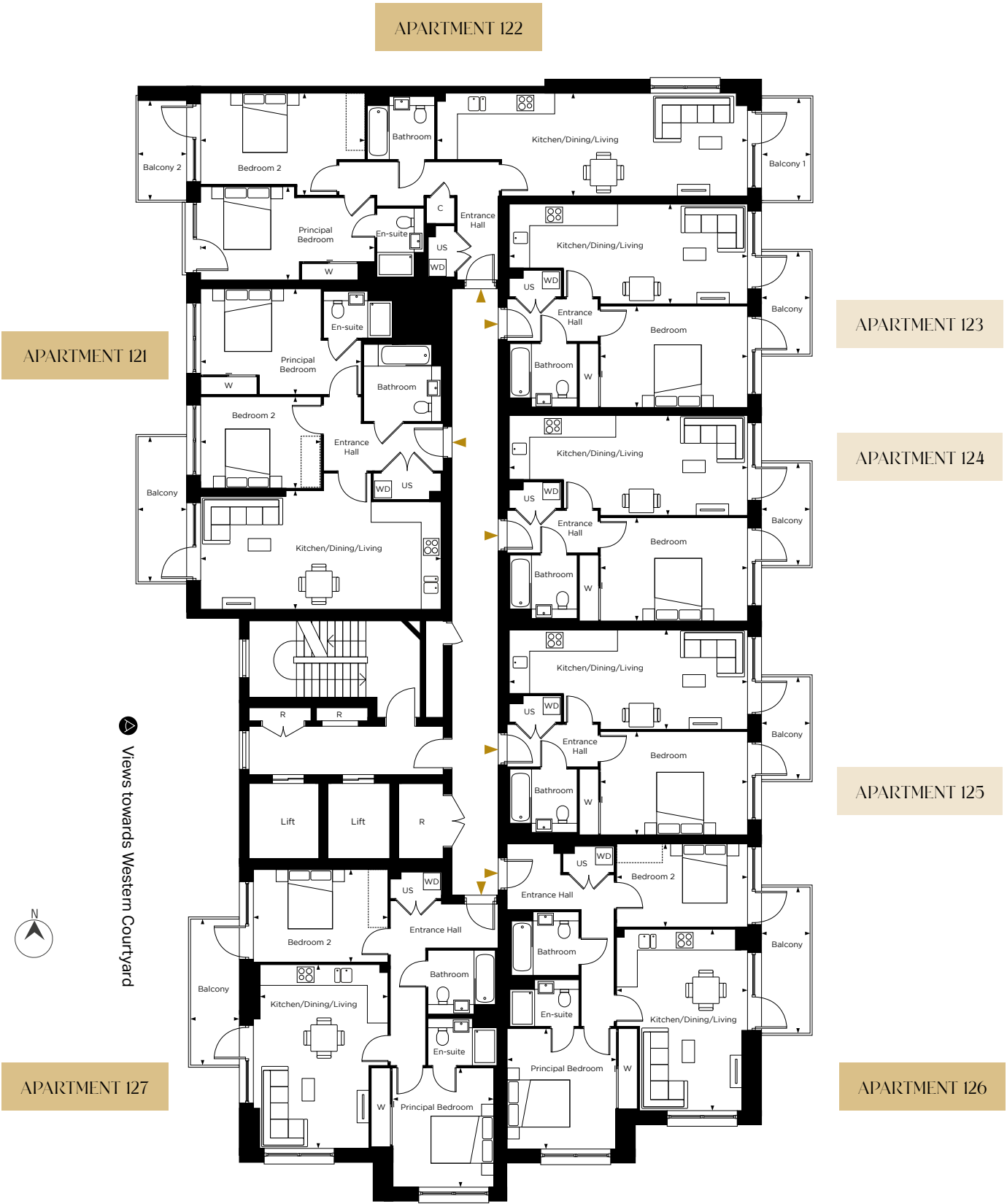
 Washer Dryer
- R

 Riser Cupboard

WREN HOUSE



Apartment layouts provide approximate measurements only and are subject to planning. Dimensions, which are taken from the indicated points of measurements are for guidance only and are not intended to be used for window treatments or items of furniture. Bathroom and kitchen layouts are indicative only and are subject to change. Wardrobe size and position may vary. The information contained within this document does not constitute part of any offer, contract or warranty. Whilst the plans have been prepared with all due care for convenience of the intending purchaser, the information herein is a preliminary guide only.



Floor 6

PLOT 128
TYPE O6
2 BEDROOM APARTMENT

Kitchen / Dining / Living	7.70m x 3.80m	25'3" x 12'5"
Principal Bedroom	5.15m x 3.35m	16'10" x 11'1"
Bedroom 2	3.85m x 2.90m	12'7" x 9'6"
Balcony	1.55m x 4.65m	5'1" x 15'3"

PLOT 129
TYPE I7
2 BEDROOM APARTMENT

Kitchen / Dining / Living	9.95m x 3.30m	32'9" x 10'10"
Principal Bedroom	5.55m x 3.00m	18'3" x 9'10"
Bedroom 2	5.25m x 3.25m	17'3" x 10'9"
Balcony 1	1.55m x 3.30m	5'1" x 10'9"
Balcony 2	1.55m x 3.15m	5'1" x 10'5"

PLOTS I30, I31 & I32
TYPE O2
1 BEDROOM APARTMENT

Kitchen / Dining / Living	7.75m x 3.20m	25'5" x 10'7"
Bedroom	4.90m x 3.25m	16'0" x 10'7"
Balcony	1.55m x 3.30m	5'1" x 10'9"

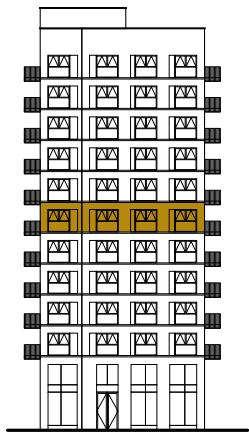
PLOT I33
TYPE O9
2 BEDROOM APARTMENT

Kitchen / Dining / Living	4.00m x 5.80m	13'2" x 19'0"
Principal Bedroom	3.50m x 3.85m	11'6" x 12'7"
Bedroom 2	4.20m x 2.65m	13'9" x 8'9"
Balcony	1.55m x 4.65m	5'1" x 15'3"

PLOT I34
TYPE O5
2 BEDROOM APARTMENT

Kitchen / Dining / Living	4.10m x 5.85m	13'5" x 19'3"
Principal Bedroom	3.20m x 3.80m	10'7" x 12'6"
Bedroom 2	4.30m x 2.95m	14'1" x 9'9"
Balcony	1.55m x 4.65m	5'1" x 15'3"

SOUTH ELEVATION



KEY

- One bedroom
- Two bedroom
- Measurements
- W

 Wardrobe
- C

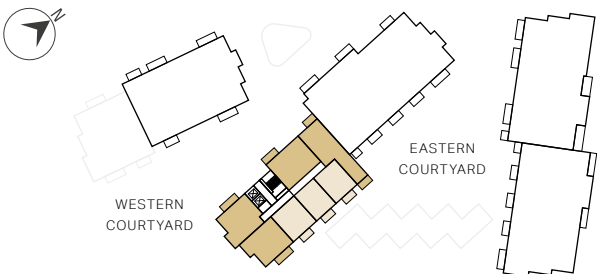
 Cupboard
- Indicative Wardrobe Position
- US

 Utility Store
- WD

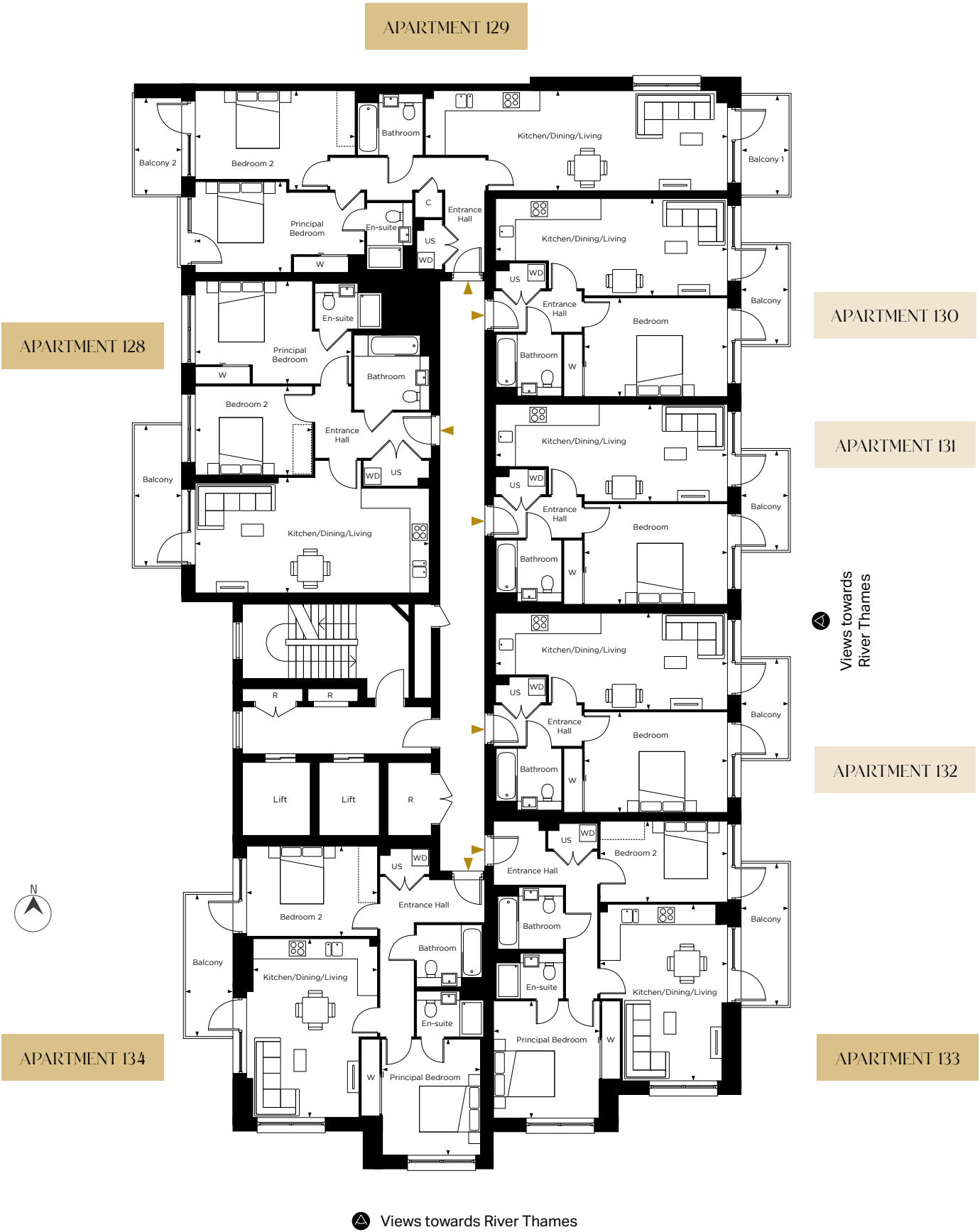
 Washer Dryer
- R

 Riser Cupboard

WREN HOUSE



Apartment layouts provide approximate measurements only and are subject to planning. Dimensions, which are taken from the indicated points of measurements are for guidance only and are not intended to be used for window treatments or items of furniture. Bathroom and kitchen layouts are indicative only and are subject to change. Wardrobe size and position may vary. The information contained within this document does not constitute part of any offer, contract or warranty. Whilst the plans have been prepared with all due care for convenience of the intending purchaser, the information herein is a preliminary guide only.



Floor 7

PLOT 135
TYPE O6
2 BEDROOM APARTMENT

Kitchen / Dining / Living	7.70m x 3.80m	25'3" x 12'5"
Principal Bedroom	5.15m x 3.35m	16'10" x 11'1"
Bedroom 2	3.85m x 2.90m	12'7" x 9'6"
Balcony	1.55m x 4.65m	5'1" x 15'3"

PLOT 136
TYPE I7
2 BEDROOM APARTMENT

Kitchen / Dining / Living	9.95m x 3.30m	32'9" x 10'10"
Principal Bedroom	5.55m x 3.00m	18'3" x 9'10"
Bedroom 2	5.25m x 3.25m	17'3" x 10'9"
Balcony 1	1.55m x 3.30m	5'1" x 10'9"
Balcony 2	1.55m x 3.15m	5'1" x 10'5"

PLOTS 137, 138 & 139
TYPE O2
1 BEDROOM APARTMENT

Kitchen / Dining / Living	7.75m x 3.20m	25'5" x 10'7"
Bedroom	4.90m x 3.25m	16'0" x 10'7"
Balcony	1.55m x 3.30m	5'1" x 10'9"

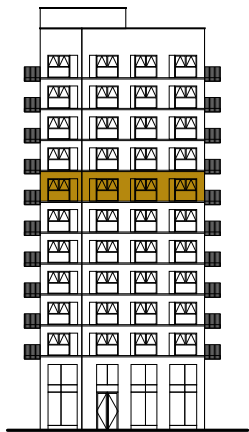
PLOT 140
TYPE O9
2 BEDROOM APARTMENT

Kitchen / Dining / Living	4.00m x 5.80m	13'2" x 19'0"
Principal Bedroom	3.50m x 3.85m	11'6" x 12'7"
Bedroom 2	4.20m x 2.65m	13'9" x 8'9"
Balcony	1.55m x 4.65m	5'1" x 15'3"

PLOT 141
TYPE O5
2 BEDROOM APARTMENT

Kitchen / Dining / Living	4.10m x 5.85m	13'5" x 19'3"
Principal Bedroom	3.20m x 3.80m	10'7" x 12'6"
Bedroom 2	4.30m x 2.95m	14'1" x 9'9"
Balcony	1.55m x 4.65m	5'1" x 15'3"

SOUTH ELEVATION



KEY

- One bedroom

● Two bedroom
- ↔ Measurements

W Wardrobe

C Cupboard

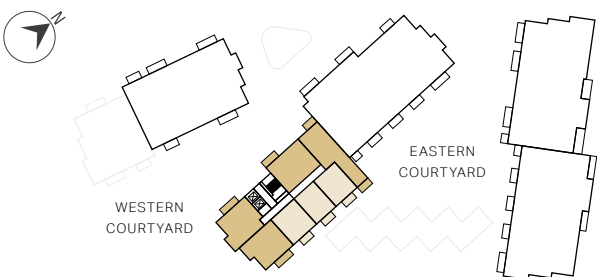
⋮ Indicative Wardrobe Position

US Utility Store

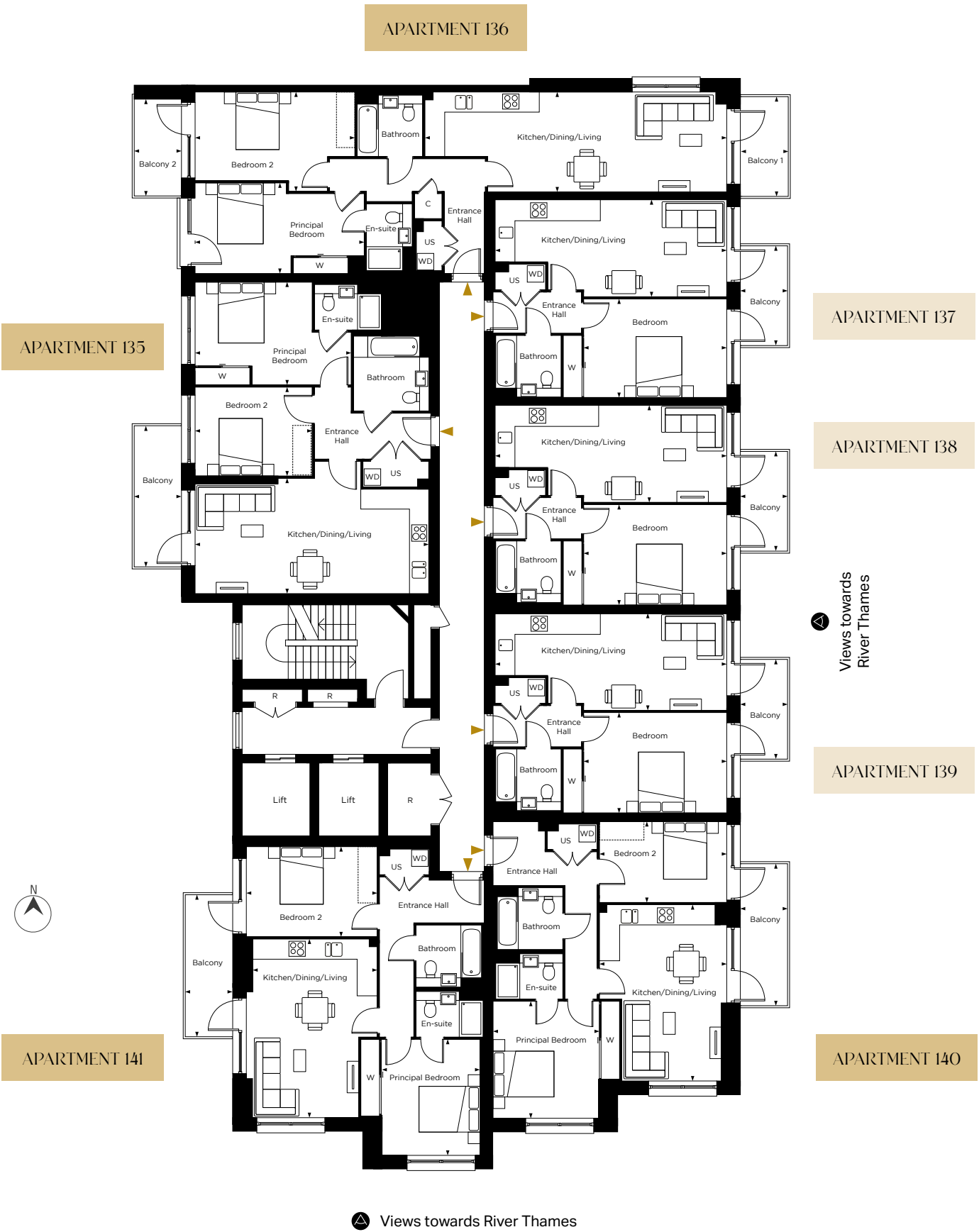
WD Washer Dryer

R Riser Cupboard

WREN HOUSE



Apartment layouts provide approximate measurements only and are subject to planning. Dimensions, which are taken from the indicated points of measurements are for guidance only and are not intended to be used for window treatments or items of furniture. Bathroom and kitchen layouts are indicative only and are subject to change. Wardrobe size and position may vary. The information contained within this document does not constitute part of any offer, contract or warranty. Whilst the plans have been prepared with all due care for convenience of the intending purchaser, the information herein is a preliminary guide only.



Floor 8

PLOT 142
TYPE O6
2 BEDROOM APARTMENT

Kitchen / Dining / Living	7.70m x 3.80m	25'3" x 12'5"
Principal Bedroom	5.15m x 3.35m	16'10" x 11'1"
Bedroom 2	3.85m x 2.90m	12'7" x 9'6"
Balcony	1.55m x 4.65m	5'1" x 15'3"

PLOT 143
TYPE I7
2 BEDROOM APARTMENT

Kitchen / Dining / Living	9.95m x 3.30m	32'9" x 10'10"
Principal Bedroom	5.55m x 3.00m	18'3" x 9'10"
Bedroom 2	5.25m x 3.25m	17'3" x 10'9"
Balcony 1	1.55m x 3.30m	5'1" x 10'9"
Balcony 2	1.55m x 3.15m	5'1" x 10'5"

PLOTS 144, 145 & 146
TYPE O2
1 BEDROOM APARTMENT

Kitchen / Dining / Living	7.75m x 3.20m	25'5" x 10'7"
Bedroom	4.90m x 3.25m	16'0" x 10'7"
Balcony	1.55m x 3.30m	5'1" x 10'9"

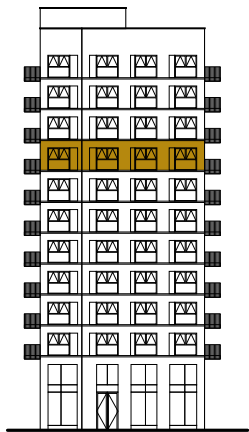
PLOT 147
TYPE O9
2 BEDROOM APARTMENT

Kitchen / Dining / Living	4.00m x 5.80m	13'2" x 19'0"
Principal Bedroom	3.50m x 3.85m	11'6" x 12'7"
Bedroom 2	4.20m x 2.65m	13'9" x 8'9"
Balcony	1.55m x 4.65m	5'1" x 15'3"

PLOT 148
TYPE O5
2 BEDROOM APARTMENT

Kitchen / Dining / Living	4.10m x 5.85m	13'5" x 19'3"
Principal Bedroom	3.20m x 3.80m	10'7" x 12'6"
Bedroom 2	4.30m x 2.95m	14'1" x 9'9"
Balcony	1.55m x 4.65m	5'1" x 15'3"

SOUTH ELEVATION



KEY

- One bedroom

● Two bedroom
- ↔ Measurements

W Wardrobe

C Cupboard

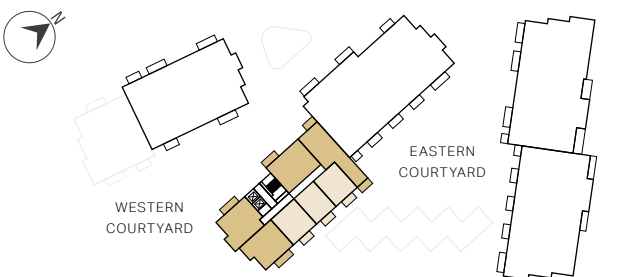
⋮ Indicative Wardrobe Position

US Utility Store

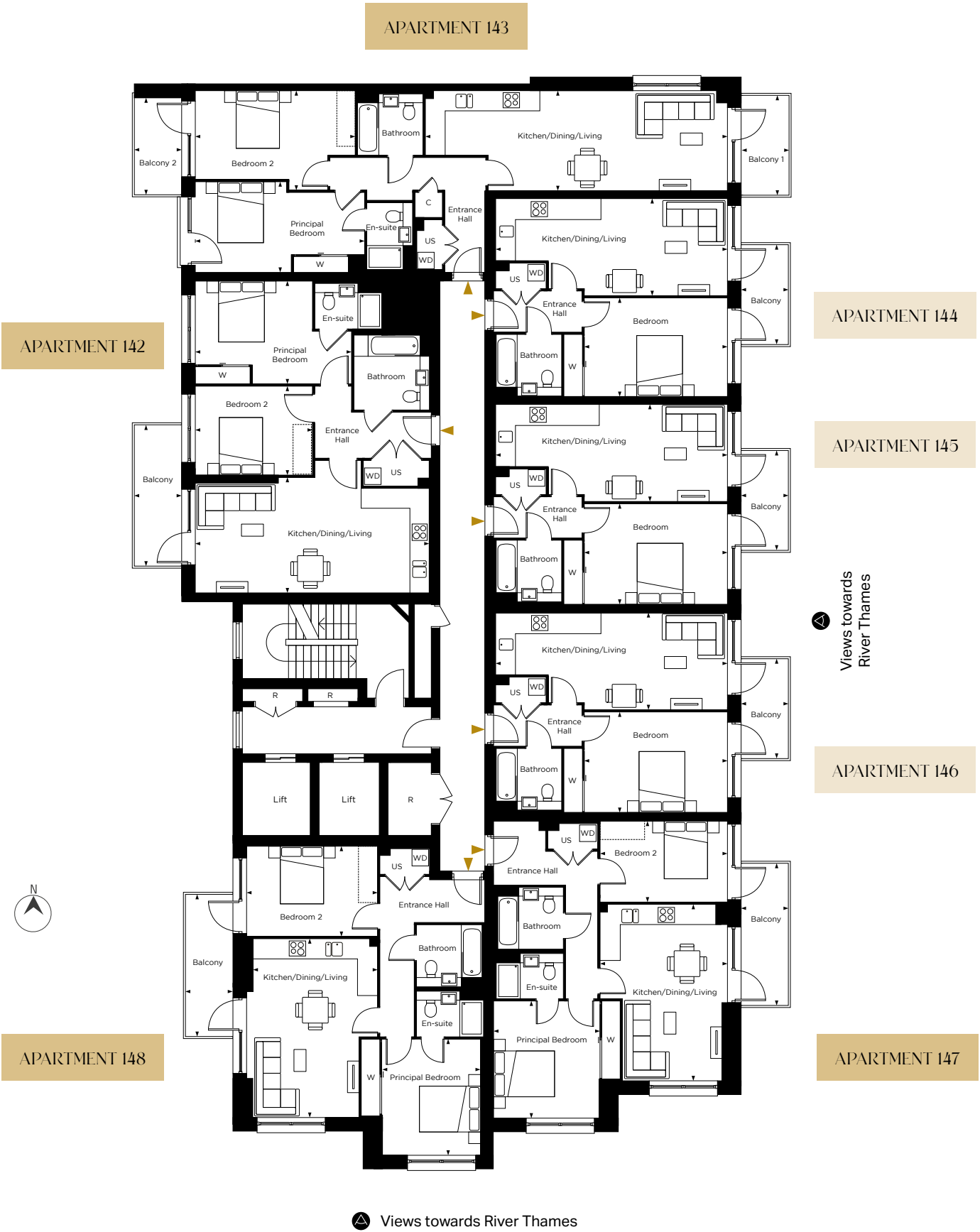
WD Washer Dryer

R Riser Cupboard

WREN HOUSE



Apartment layouts provide approximate measurements only and are subject to planning. Dimensions, which are taken from the indicated points of measurements are for guidance only and are not intended to be used for window treatments or items of furniture. Bathroom and kitchen layouts are indicative only and are subject to change. Wardrobe size and position may vary. The information contained within this document does not constitute part of any offer, contract or warranty. Whilst the plans have been prepared with all due care for convenience of the intending purchaser, the information herein is a preliminary guide only.



Floor 9

PLOT 149
TYPE O6
2 BEDROOM APARTMENT

Kitchen / Dining / Living	7.70m x 3.80m	25'3" x 12'5"
Principal Bedroom	5.15m x 3.35m	16'10" x 11'1"
Bedroom 2	3.85m x 2.90m	12'7" x 9'6"
Balcony	1.55m x 4.65m	5'1" x 15'3"

PLOT 150
TYPE I7
2 BEDROOM APARTMENT

Kitchen / Dining / Living	9.95m x 3.30m	32'9" x 10'10"
Principal Bedroom	5.55m x 3.00m	18'3" x 9'10"
Bedroom 2	5.25m x 3.25m	17'3" x 10'9"
Balcony 1	1.55m x 3.30m	5'1" x 10'9"
Balcony 2	1.55m x 3.15m	5'1" x 10'5"

PLOTS 151, 152 & 153
TYPE O2
1 BEDROOM APARTMENT

Kitchen / Dining / Living	7.75m x 3.20m	25'5" x 10'7"
Bedroom	4.90m x 3.25m	16'0" x 10'7"
Balcony	1.55m x 3.30m	5'1" x 10'9"

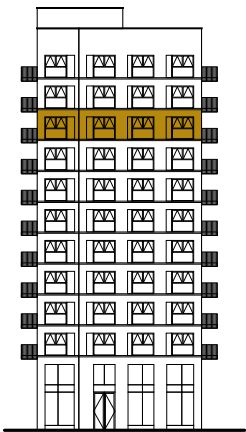
PLOT 154
TYPE O9
2 BEDROOM APARTMENT

Kitchen / Dining / Living	4.00m x 5.80m	13'2" x 19'0"
Principal Bedroom	3.50m x 3.85m	11'6" x 12'7"
Bedroom 2	4.20m x 2.65m	13'9" x 8'9"
Balcony	1.55m x 4.65m	5'1" x 15'3"

PLOT 155
TYPE O5
2 BEDROOM APARTMENT

Kitchen / Dining / Living	4.10m x 5.85m	13'5" x 19'3"
Principal Bedroom	3.20m x 3.80m	10'7" x 12'6"
Bedroom 2	4.30m x 2.95m	14'1" x 9'9"
Balcony	1.55m x 4.65m	5'1" x 15'3"

SOUTH ELEVATION



KEY

- One bedroom

● Two bedroom
- ↔ Measurements

W Wardrobe

C Cupboard

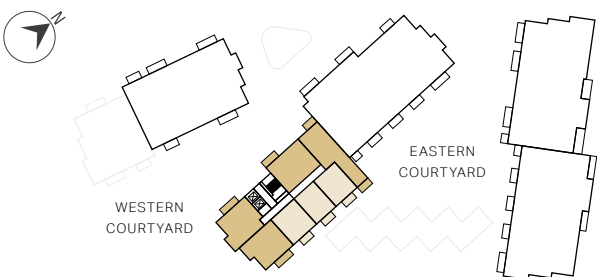
⋮ Indicative Wardrobe Position

US Utility Store

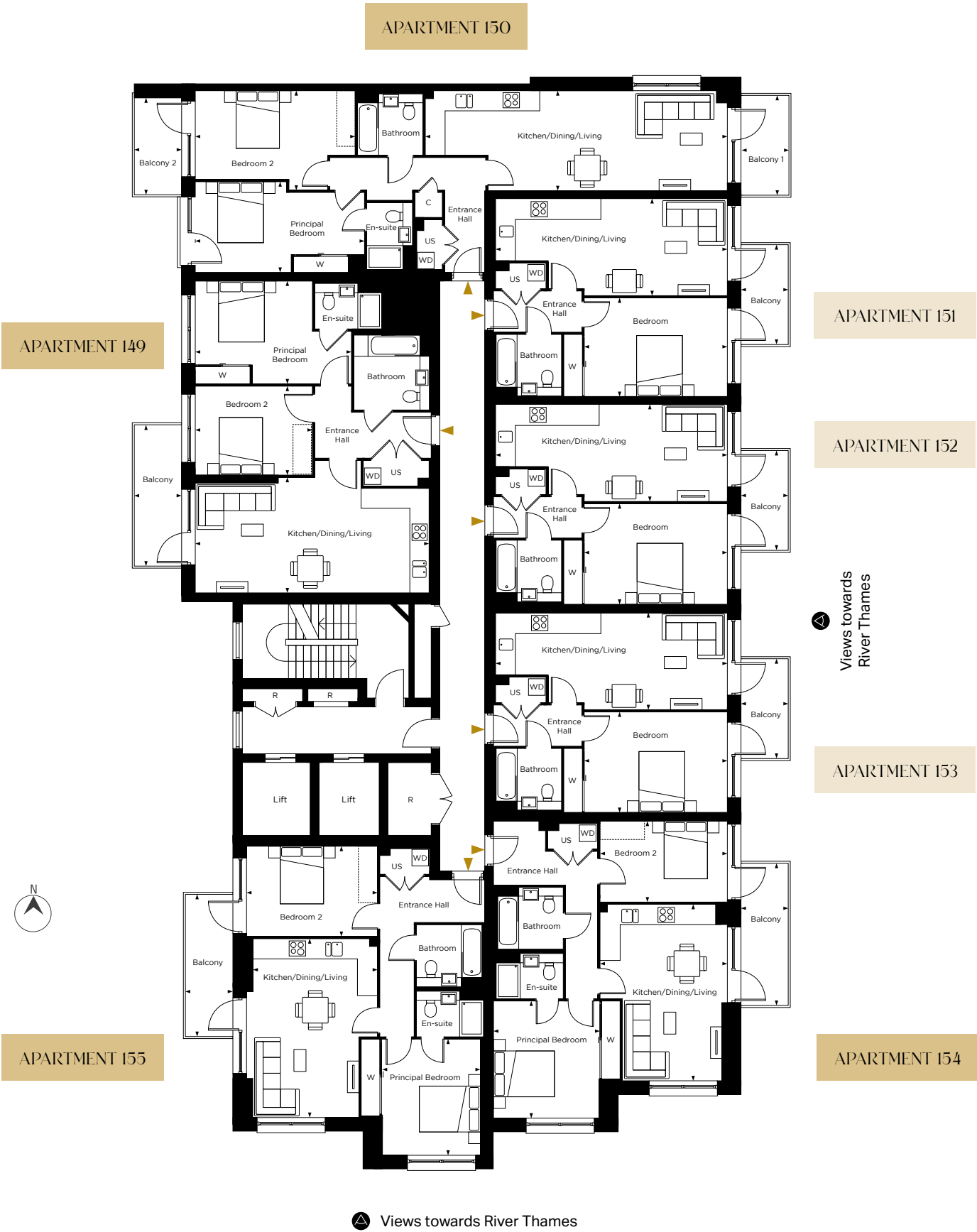
WD Washer Dryer

R Riser Cupboard

WREN HOUSE



Apartment layouts provide approximate measurements only and are subject to planning. Dimensions, which are taken from the indicated points of measurements are for guidance only and are not intended to be used for window treatments or items of furniture. Bathroom and kitchen layouts are indicative only and are subject to change. Wardrobe size and position may vary. The information contained within this document does not constitute part of any offer, contract or warranty. Whilst the plans have been prepared with all due care for convenience of the intending purchaser, the information herein is a preliminary guide only.



Floor 10

PLOT 156
TYPE O6
2 BEDROOM APARTMENT

Kitchen / Dining / Living	7.70m x 3.80m	25'3" x 12'5"
Principal Bedroom	5.15m x 3.35m	16'10" x 11'1"
Bedroom 2	3.85m x 2.90m	12'7" x 9'6"
Balcony	1.55m x 4.65m	5'1" x 15'3"

PLOT 157
TYPE I7
2 BEDROOM APARTMENT

Kitchen / Dining / Living	9.95m x 3.30m	32'9" x 10'10"
Principal Bedroom	5.55m x 3.00m	18'3" x 9'10"
Bedroom 2	5.25m x 3.25m	17'3" x 10'9"
Balcony 1	1.55m x 3.30m	5'1" x 10'9"
Balcony 2	1.55m x 3.15m	5'1" x 10'5"

PLOTS 158, 159 & 160
TYPE O2
1 BEDROOM APARTMENT

Kitchen / Dining / Living	7.75m x 3.20m	25'5" x 10'7"
Bedroom	4.90m x 3.25m	16'0" x 10'7"
Balcony	1.55m x 3.30m	5'1" x 10'9"

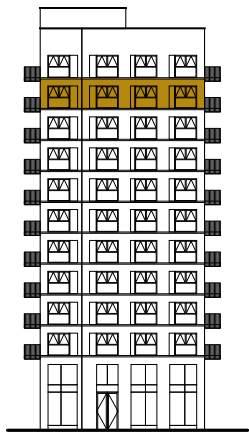
PLOT 161
TYPE O9
2 BEDROOM APARTMENT

Kitchen / Dining / Living	4.00m x 5.80m	13'2" x 19'0"
Principal Bedroom	3.50m x 3.85m	11'6" x 12'7"
Bedroom 2	4.20m x 2.65m	13'9" x 8'9"
Balcony	1.55m x 4.65m	5'1" x 15'3"

PLOT 162
TYPE O5
2 BEDROOM APARTMENT

Kitchen / Dining / Living	4.10m x 5.85m	13'5" x 19'3"
Principal Bedroom	3.20m x 3.80m	10'7" x 12'6"
Bedroom 2	4.30m x 2.95m	14'1" x 9'9"
Balcony	1.55m x 4.65m	5'1" x 15'3"

SOUTH ELEVATION



KEY

- One bedroom
- Two bedroom
- Measurements
- W

 Wardrobe
- C

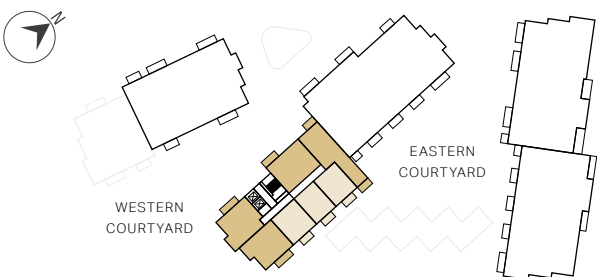
 Cupboard
- Indicative Wardrobe Position
- US

 Utility Store
- WD

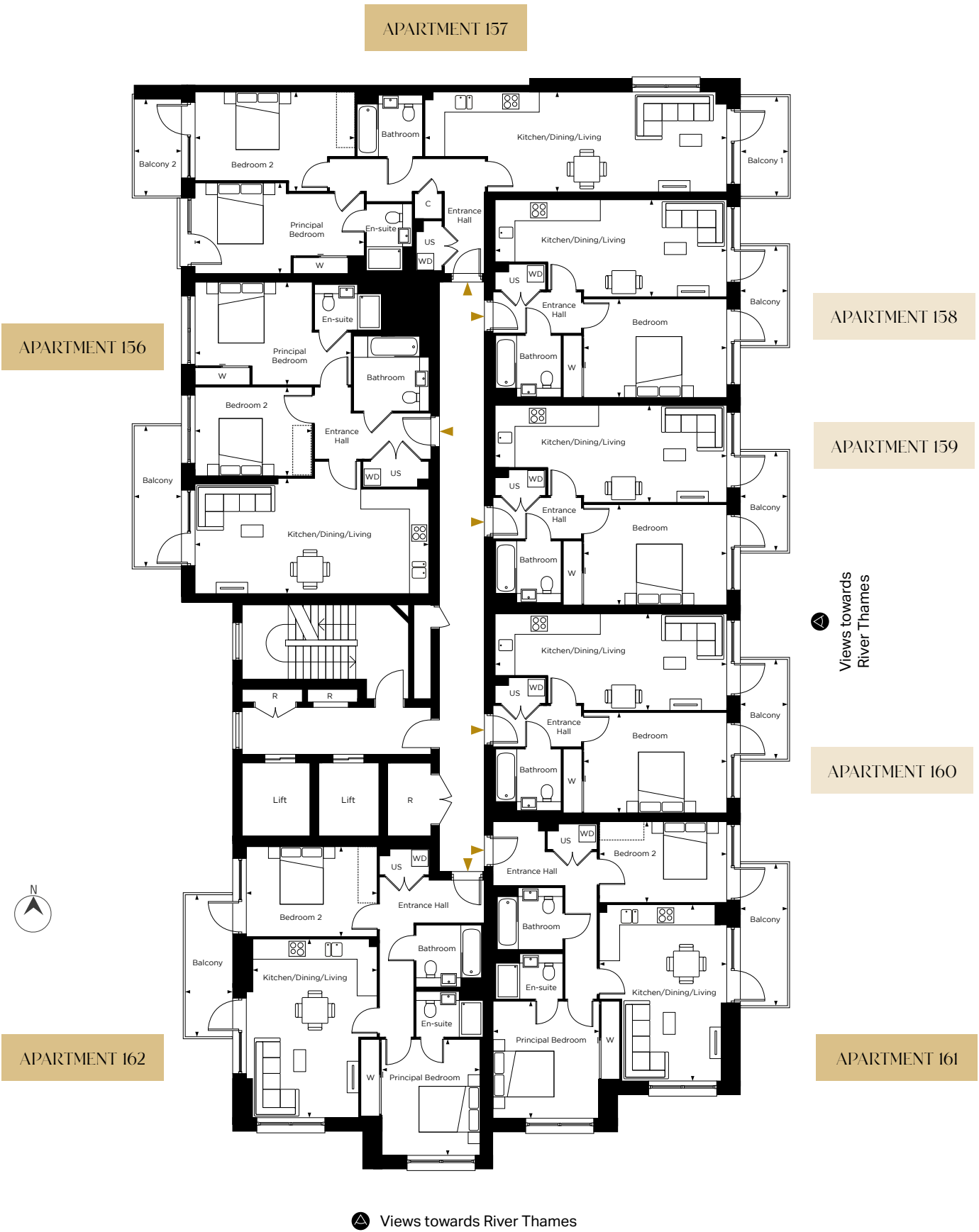
 Washer Dryer
- R

 Riser Cupboard

WREN HOUSE



Apartment layouts provide approximate measurements only and are subject to planning. Dimensions, which are taken from the indicated points of measurements are for guidance only and are not intended to be used for window treatments or items of furniture. Bathroom and kitchen layouts are indicative only and are subject to change. Wardrobe size and position may vary. The information contained within this document does not constitute part of any offer, contract or warranty. Whilst the plans have been prepared with all due care for convenience of the intending purchaser, the information herein is a preliminary guide only.



Floor 11

PLOT 163
TYPE O6
2 BEDROOM APARTMENT

Kitchen / Dining / Living	7.70m x 3.80m	25'3" x 12'5"
Principal Bedroom	5.15m x 3.35m	16'10" x 11'1"
Bedroom 2	3.85m x 2.90m	12'7" x 9'6"
Balcony	1.55m x 4.65m	5'1" x 15'3"

PLOT 164
TYPE I7
2 BEDROOM APARTMENT

Kitchen / Dining / Living	9.95m x 3.30m	32'9" x 10'10"
Principal Bedroom	5.55m x 3.00m	18'3" x 9'10"
Bedroom 2	5.25m x 3.25m	17'3" x 10'9"
Balcony 1	1.55m x 3.30m	5'1" x 10'9"
Balcony 2	1.55m x 3.15m	5'1" x 10'5"

PLOTS 165, 166 & 167
TYPE O2
1 BEDROOM APARTMENT

Kitchen / Dining / Living	7.75m x 3.20m	25'5" x 10'7"
Bedroom	4.90m x 3.25m	16'0" x 10'7"
Balcony	1.55m x 3.30m	5'1" x 10'9"

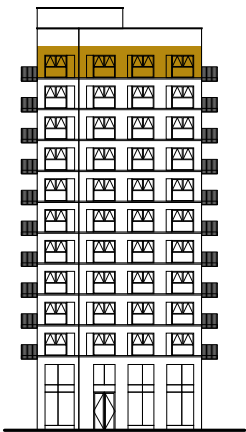
PLOT 168
TYPE O9
2 BEDROOM APARTMENT

Kitchen / Dining / Living	4.00m x 5.80m	13'2" x 19'0"
Principal Bedroom	3.50m x 3.85m	11'6" x 12'7"
Bedroom 2	4.20m x 2.65m	13'9" x 8'9"
Balcony	1.55m x 4.65m	5'1" x 15'3"

PLOT 169
TYPE O5
2 BEDROOM APARTMENT

Kitchen / Dining / Living	4.10m x 5.85m	13'5" x 19'3"
Principal Bedroom	3.20m x 3.80m	10'7" x 12'6"
Bedroom 2	4.30m x 2.95m	14'1" x 9'9"
Balcony	1.55m x 4.65m	5'1" x 15'3"

SOUTH ELEVATION



KEY

- One bedroom
- Two bedroom
- Measurements
- W

 Wardrobe
- C

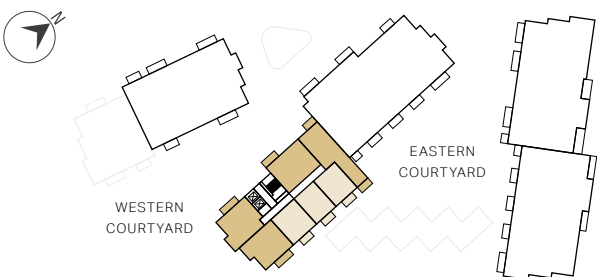
 Cupboard
- Indicative Wardrobe Position
- US

 Utility Store
- WD

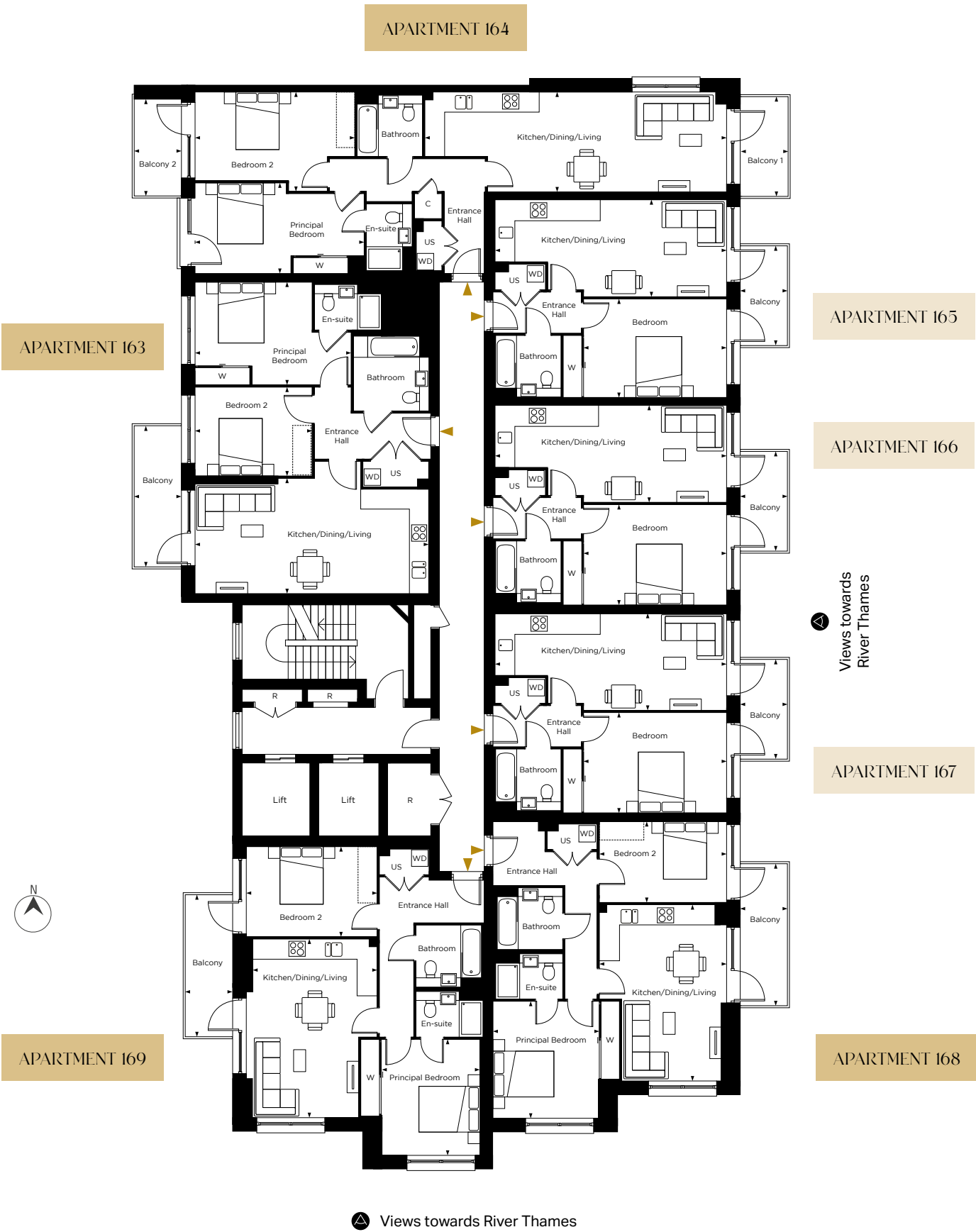
 Washer Dryer
- R

 Riser Cupboard

WREN HOUSE



Apartment layouts provide approximate measurements only and are subject to planning. Dimensions, which are taken from the indicated points of measurements are for guidance only and are not intended to be used for window treatments or items of furniture. Bathroom and kitchen layouts are indicative only and are subject to change. Wardrobe size and position may vary. The information contained within this document does not constitute part of any offer, contract or warranty. Whilst the plans have been prepared with all due care for convenience of the intending purchaser, the information herein is a preliminary guide only.



Internal Specification

It's the sum of little delights that adds up to a brilliant home. Immaculate fittings, an elegant colour palette, and warm lighting not only look great but make living here seamless.



KITCHEN*

- Matt finish handleless units with soft close to doors and drawers
- Caesarstone worktop with matching upstand and splashback behind hob
- Induction hob
- Integrated single oven
- Integrated microwave
- Integrated dishwasher
- Integrated fridge/freezer
- Integrated cooker hood
- Stainless steel undermounted sink with contemporary matt black mixer tap
- LED feature lighting to wall units
- Washer/dryer (freestanding in hallway cupboard)

EN-SUITE

- White sanitaryware with contemporary matt black brassware
- Low profile shower tray with glass shower door
- Feature mirror cabinet and shelf with LED lighting
- Large format wall tiles
- Heated black towel rail

BATHROOM

- White sanitaryware with contemporary matt black brassware
- Bath with shower over and glass screen
- Feature mirror cabinet and shelf with LED lighting
- Bath panel to match vanity tops
- Large format wall tiles
- Heated black towel rail

DECORATIVE FINISHES

- Painted front entrance door with multi-point locking system
- High efficiency aluminium timber composite windows
- White painted flush internal doors with contemporary matt black ironmongery
- Built in mirrored wardrobe with sliding doors to principal bedroom
- Square cut skirting and architrave
- Walls painted in white emulsion
- Smooth ceilings in white emulsion

FLOOR FINISHES

- Amtico flooring to entrance hall, kitchen/dining/living room, bathroom and en-suite
- Carpet to bedrooms

HEATING AND WATER

- Underfloor heating throughout each apartment
- Electric heated towel rails to bathroom and en-suite
- Heating and hot water is provided via a communal hybrid air source heat pump/electric boiler system and metered to individual properties

ELECTRICAL

- Downlights to entrance hall, kitchen/dining/living room, bathroom and en-suite
- Pendant fittings to all bedrooms
- Shaver sockets to bathroom and en-suite
- TV, BT and data points to selected locations
- BT & Virgin fibre connection to all properties for customer's choice of broadband provider
- Pre-wired for customer's own Sky Q connection
- Video entry system to every apartment, linked to main entrance door
- External lighting to balcony
- Hard-wired smoke and heat detectors
- Sprinkler system to all apartments
- Spur for customer's own installation of security alarm panel

* Kitchen designs and layouts vary; please speak to our Sales Executives for further information.

We are unable to accommodate any individual changes, additions or amendments to the specification, layout or plans to any individual home. Please note that it may not be possible to obtain the exact products as referred to in the specification; in such cases a similar alternative will be provided. Hill reserve the right to make these changes as required.



Computer generated image is indicative only

External Specification

EXTERNAL FINISHES

- Aluminium decking to balcony

COMMUNAL AREAS

- Fob controlled access system to entrance lobby
- Lift access to all floors
- Cycle and bin storage space
- Letterboxes provided for all apartments within communal entrance lobby

AMENITIES

- Residents' podium gardens
- Gym
- Co-working space
- Concierge
- On-site nursery

PARKING

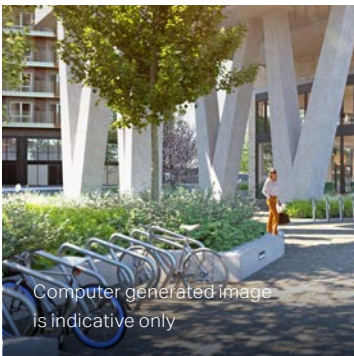
- Limited parking available at an additional cost
- Provision for electric charging points available to parking space owners

CONSTRUCTION

- Reinforced concrete frame with outer brickwork, cavity filled with insulation
- Concrete floors
- Exterior treatments comprise white/grey facing bricks
- PV panels

GENERAL

- 10 year NHBC warranty
- 990 year lease
- A service charge will be payable for the maintenance of the shared facilities and communal areas



Computer generated image is indicative only

We are unable to accommodate any individual changes, additions or amendments to the specification, layout or plans to any individual home. Please note that it may not be possible to obtain the exact products as referred to in the specification; in such cases a similar alternative will be provided. Hill reserve the right to make these changes as required. All residents will be required to contribute towards the cost of management and maintenance of the shared services and facilities at Kew Bridge Rise in the form of an annual service charge. This includes the private gym facilities, cleaning of the communal areas, building insurance, communal heating system and all general day-to-day maintenance.



Computer generated image is indicative only

Contact us.



SALES SUITE

Capital Interchange Way
Brentford
TW8 0EX

T 020 3906 1952
W kewbridgerise.co.uk
E hello@kewbridgerise.co.uk



This brochure, and the description and measurements herein, do not form any part of a contract. Whilst every effort has been made to ensure accuracy, this cannot always be guaranteed. Site layouts, and specifications are taken from drawings which were correct at the time of print. The information and imagery contained in this brochure is for guidance purposes only and does not constitute a contract, part of contract or warranty. Images of the Kew Bridge Rise properties are computer generated and the landscaping may have been enhanced. Details correct at time of going to print.

Delivered in partnership

