

LAMPTON PARKSIDE

WEST LONDON TW3

GREEN SQUARE

A collection of studio,
1, 2 and 3 bedroom apartments and
2 and 3 bedroom duplexes



LAMPTON
PARKSIDE

WEST LONDON TW3

INTRODUCING GREEN SQUARE

A COLLECTION OF STYLISH, MODERN HOMES
COMPRISING STUDIO, 1, 2 AND 3 BEDROOM
APARTMENTS, AND 2 AND 3 BEDROOM DUPLEXES,
ALL WITH THEIR OWN PRIVATE OUTDOOR SPACE.

Ideally located at Lampton Parkside, these homes combine
a beautiful green setting next to 40 acres of parkland,
with all the amenities, opportunities and connections of
London living. It is a place where you can savour the city,
delight in nature and live life with more vitality.





AN UPLIFTING PARKSIDE LOCATION

ENJOY LIVING IN A FLOURISHING COMMUNITY, WHERE YOU CAN
EMBRACE A HAPPY, HEALTHY AND REFRESHING LIFESTYLE.

Green Square benefits from a prime position next to Lampton Park, with some homes enjoying leafy parkland views. Designed around a raised central garden, with car parking located underneath, these homes offer plenty of opportunities to connect with the outside. All have balconies or terraces, while some duplexes have their own garden too. There are also two residents' terraces, the perfect place to relax as the sun sets over London.

Ample cycle storage is provided on the ground floor of Green Square, so that you can travel by bicycle easily and conveniently. A concierge service, conveniently located on the ground floor of the neighbouring block, provides a 12 hour a day, 7 day a week service and is available to all apartments. From handling your dry cleaning to receiving deliveries whilst you're away, this personal service is here to make life at Lampton Parkside even easier.

Attractive gardens, landscaping and leafy streets create a welcoming environment, where residents can pause, meet and form friendships. Neighbouring Lampton Park features 40 acres of green space, with sports fields, tennis courts, bowling green, playground, wooded areas and historic rose garden. And with Hounslow's tube station just a four-minute walk and town centre less than half a mile away, you have everything you need on your doorstep.



APARTMENTS AND DUPLEXES SPECIFICATION

APARTMENTS AND DUPLEXES ARE LIGHT, COMFORTABLE AND BEAUTIFULLY FINISHED, WITH FLEXIBLE SPACES WHERE YOU CAN WORK, RELAX, SOCIALISE AND ENTERTAIN.



Image is of the Lampton Parkside show apartment. For indicative purposes only.

KITCHEN

- Matt finish handleless units with soft close to doors and drawers
- Caesarstone worktop with matching upstands and splashback behind hob
- Induction hob
- Integrated single oven
- Integrated microwave
- Integrated compact combi oven/ microwave (to studios)
- Integrated dishwasher
- Integrated fridge/freezer or fridge with freezer compartment to studios
- Integrated cooker hood
- Stainless steel undermounted sink with contemporary brushed steel mixer tap
- LED feature lighting to wall units
- Washer/dryer (freestanding in hallway cupboard)

Kitchen designs and layouts vary; please speak to our Sales Executives for further information

EN-SUITE

- Low profile shower tray with glass shower door
- Feature mirror with shelf to match vanity top (where layout allows)
- Heated chrome towel rail

BATHROOM

- Bath with shower over and glass screen
- Bath panel to match vanity top
- Feature mirror with shelf (where layout allows)
- Heated chrome towel rail

DECORATIVE FINISHES

- Painted front entrance door with multi-point locking system
- High efficiency double glazed aluminium timber composite windows
- Timber staircase with carpeted treads and risers to duplexes
- White painted flush internal doors with contemporary dual finish ironmongery

- Built in mirrored wardrobe with sliding doors to principal bedroom
- Square cut skirting and architrave
- Walls painted in white emulsion
- Smooth ceilings in white emulsion

FLOOR FINISHES

- Amtico flooring to entrance hall, kitchen/living/dining room, bathroom, en-suite and WC, living rooms to duplexes and throughout studios
- Carpet to bedrooms, stairs and landing to duplexes

HEATING AND WATER

- Underfloor heating throughout each apartment, excluding under the bathtubs, kitchens, cupboards and utility stores
- Heated chrome towel rails to bathroom and en-suite
- Heating via communal heating plant

ELECTRICAL

- Downlights to entrance hall, kitchen/living/dining room, separate living rooms, en-suite and WC
- Pendant fittings to all bedrooms
- LED feature lighting to wall units in kitchen
- Shaver sockets to bathroom and en-suite
- TV, BT and data points to selected locations
- Wiring for customer's own broadband connection
- Pre-wired for customer's own Sky Q connection
- Video entry system to every apartment accessed from communal core, linked to main entrance door
- External lighting to balcony/terrace
- Hard-wired smoke and heat detectors
- Sprinkler system to all apartments
- Spur for customer's own installation of security alarm panel

EXTERNAL FINISHES

- Porcelain tiles to balconies
- Private terraces to first floor apartments and duplexes, with turf and/or paving

COMMUNAL AREAS

- Fob controlled access system to entrance lobby where apartments accessed off communal core
- Lift access to all floors where accessed off main communal core
- Cycle and bin storage space
- Letterboxes provided within communal entrance lobby
- Communal roof terraces*

PARKING

- Allocated parking space available to selected plots
- Electric car charging points available to selected parking spaces

CONSTRUCTION

- Steel reinforced concrete frame with outer brickwork, cavity filled with insulation
- Concrete floors
- Exterior treatments are a combination of buff, brown and red facing bricks with biodiverse roofs

GENERAL

- 10 year NHBC warranty
- 999 year lease
- A service charge will be payable for the maintenance of the shared facilities and communal areas

*Communal roof terrace access to residents of G1 and G3 building only.

The apartment buildings, landscaped area and the shared facilities at Lampton Parkside will be managed and maintained by Notting Hill Genesis. All residents will be required to pay annual service charge contributions for the management, repair and maintenance of these areas, which will be collected by Notting Hill Genesis. We are unable to accommodate any individual changes, additions or amendments to the specification, layout or plans to any individual home. Please note that it may not be possible to obtain the products as referred to in the specification; in such cases a similar alternative will be provided. Hill reserve the right to make these changes as required.

SITE PLAN



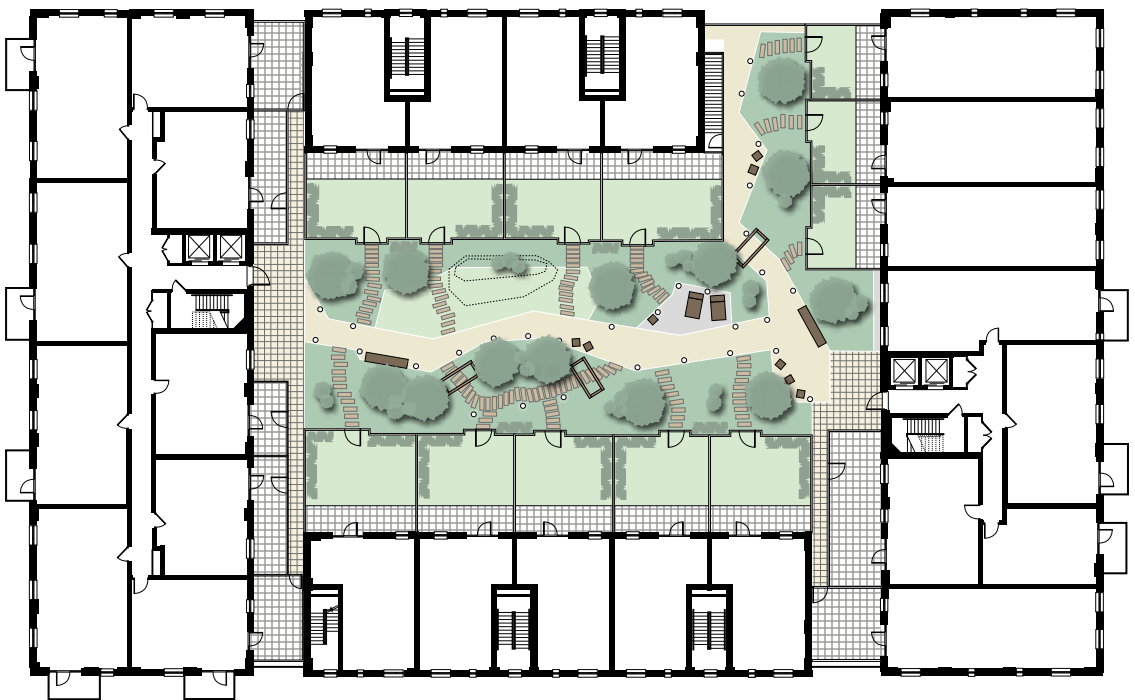
GREEN SQUARE

RESIDENTS' PARKING (GROUND)



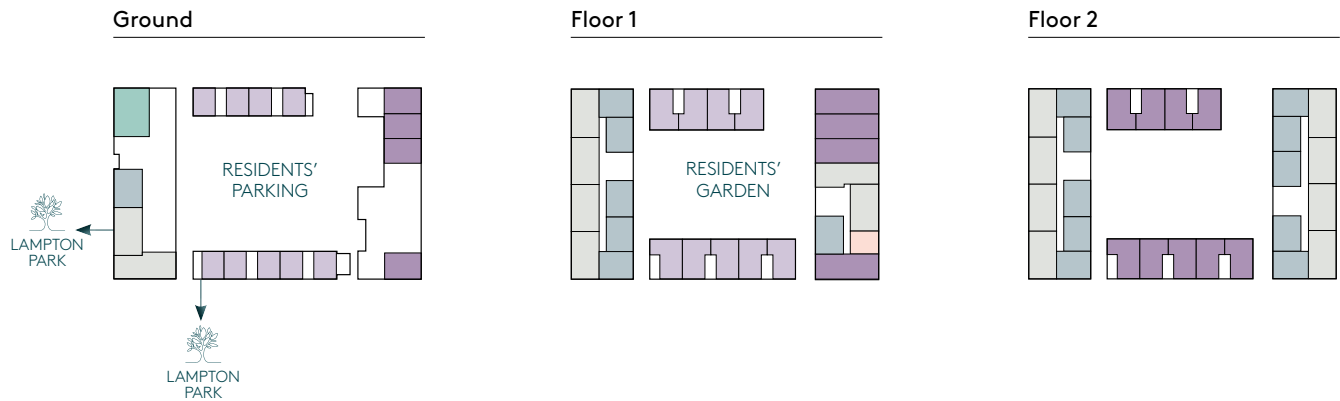
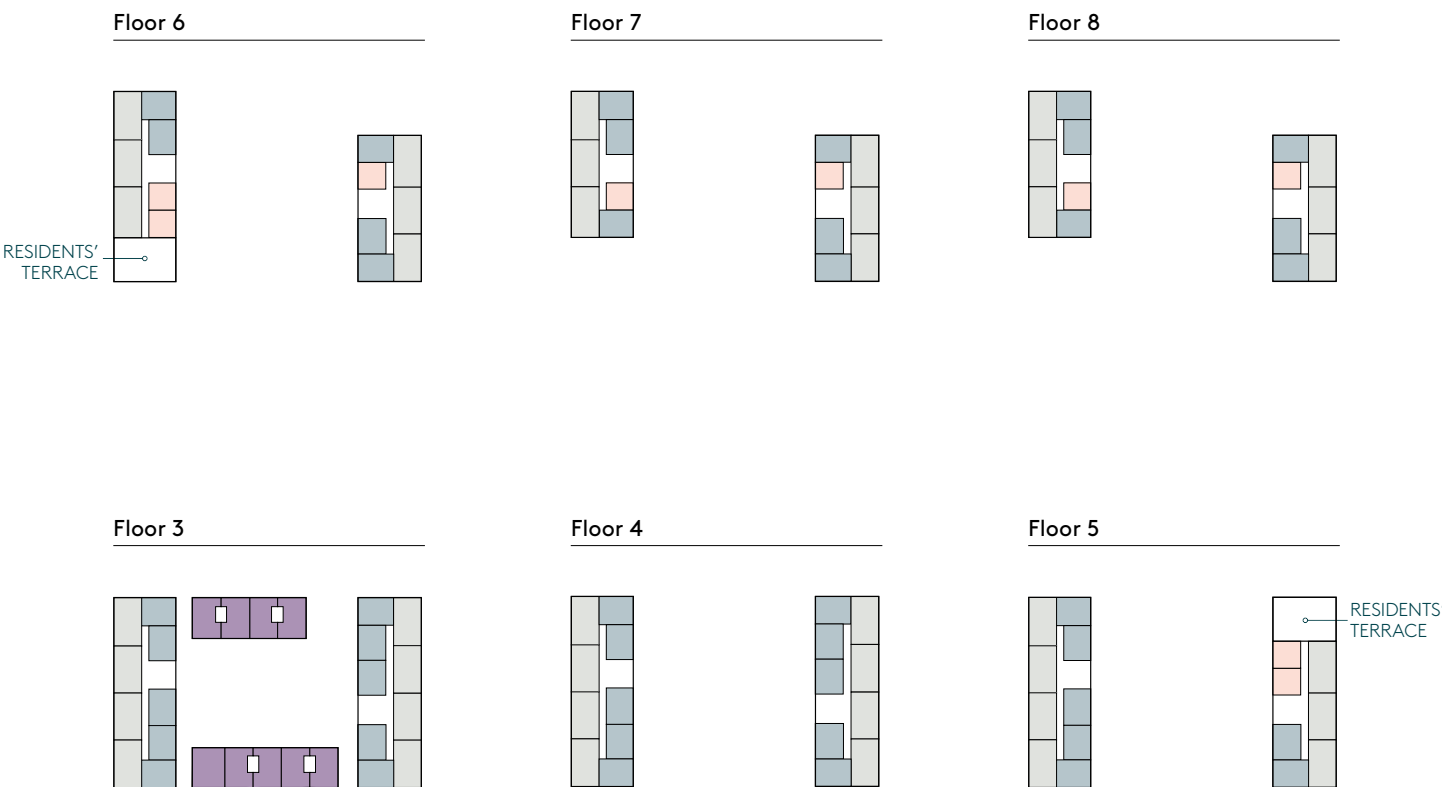
GREEN SQUARE

RESIDENTS' GARDEN (FLOOR 1)



GREEN SQUARE

APARTMENTS & DUPLEXES



- Studio apartment
- 1 bedroom apartment
- 2 bedroom apartment
- 3 bedroom apartment
- 2 bedroom duplex
- 3 bedroom duplex
- Active charging points

GREEN SQUARE

GROUND WEST



1 bedroom apartment 2 bedroom apartment 3 bedroom apartment 2 bedroom duplex

C = Cupboard W = Wardrobe R = Riser US = Utility Store = Indicative Wardrobe Position = Active charging points

G1.2 – 1 bedroom – 574 sq ft

Kitchen/Living/Dining
3.20m x 6.25m 10'5" x 20'6"
Bedroom
3.90m x 3.70m 12'9" x 12'1"
Garden
9.30m x 1.45m 30'6" x 4'9"

G1.3 – 2 bedroom – 765 sq ft

Kitchen/Living/Dining
4.35m x 6.25m 14'3" x 20'6"
Principal Bedroom
2.65m x 4.65m 8'7" x 15'3"
Bedroom 2
3.65m x 3.00m 11'11" x 9'10"
Garden
11.55m x 1.40m 37'10" x 4'7"

G1.4 – 2 bedroom – 878 sq ft

Kitchen/Living/Dining
5.10m x 6.25m 16'8" x 20'6"
Principal Bedroom
4.50m x 3.40m 14'9" x 11'1"
Bedroom 2
3.95m x 3.30m 12'11" x 10'9"
Garden
7.10m x 16.90m 23'3" x 55'5"

G1.1 – 3 bedroom – 938 sq ft

Kitchen/Living/Dining
4.45m x 7.95m 14'7" x 26'0"
Principal Bedroom
2.75m x 4.65m 9'0" x 15'3"
Bedroom 2
3.85m x 3.20m 12'7" x 10'5"
Bedroom 3
2.50m x 3.45m 8'2" x 11'3"
Garden
12.95m x 10.15m 42'5" x 33'3"

G2.1 – 2 bedroom duplex (lower)

See page 46 for details

G2.2 – 2 bedroom duplex (lower)

See page 46 for details

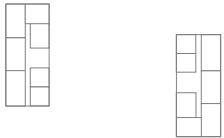
G4.1 – 2 bedroom duplex (lower)

See page 47 for details

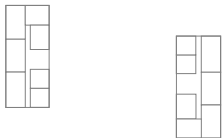
G4.2 – 2 bedroom duplex (lower)

See page 46 for details

Floor 8



Floor 7



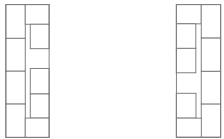
Floor 6



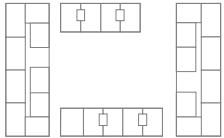
Floor 5



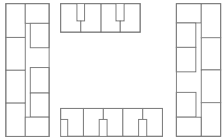
Floor 4



Floor 3



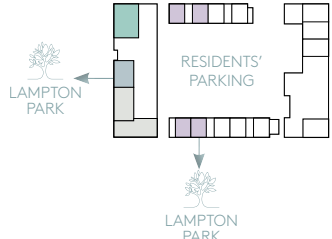
Floor 2



Floor 1



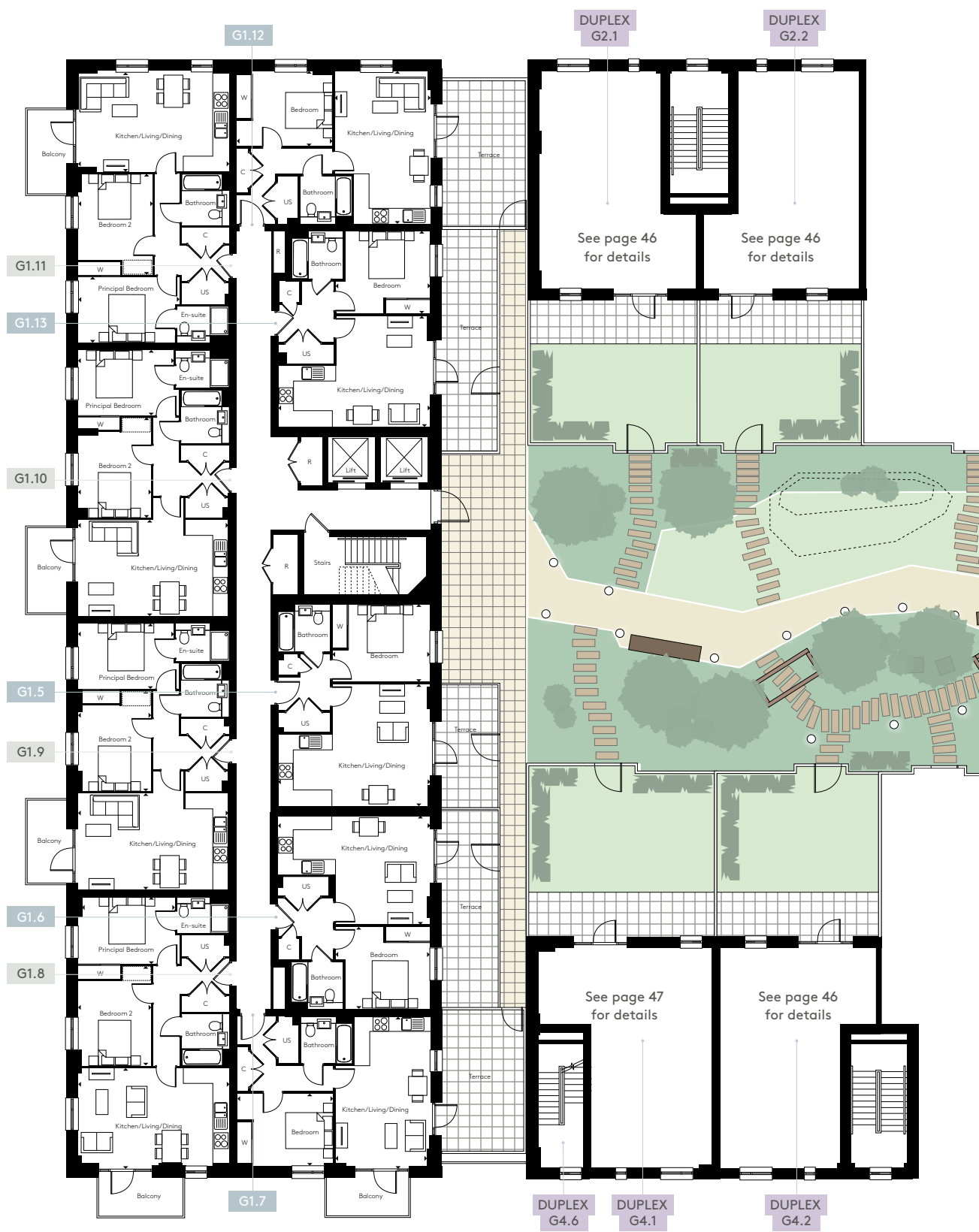
Ground



All floorplans are not to scale. Layouts provide approximate measurements only and are subject to planning. Dimensions, which are taken from the indicated points of measurement, are for guidance only and are not intended to be used for window treatments or items of furniture. Bathroom and kitchen layouts are indicative only and are subject to change. Wardrobe size and position may vary. The total square footage given is an estimate only. In the event of your making an offer you should refer to the contract documentation for information and contractual provisions relating to net sales area. The information contained within this document does not constitute part of any offer, contract, or warranty. Whilst the plans have been prepared with all due care for the convenience of the intending purchaser, the information contained herein is a preliminary guide only.

GREEN SQUARE

FLOOR 1 WEST



1 bedroom apartment

2 bedroom apartment

2 bedroom duplex

C

 = Cupboard

W

 = Wardrobe

R

 = Riser

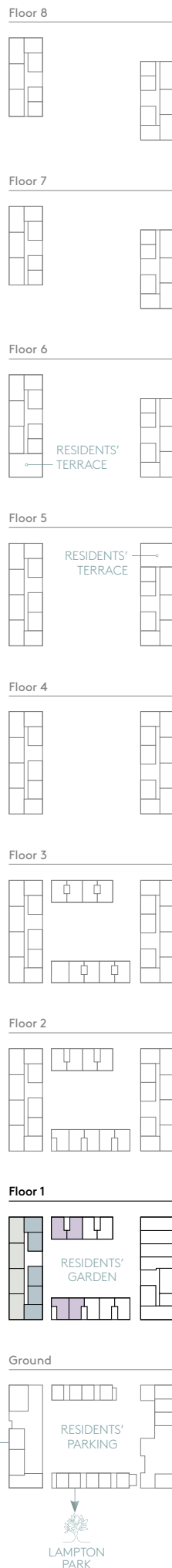
US

 = Utility Store = Indicative Wardrobe Position

N

↑

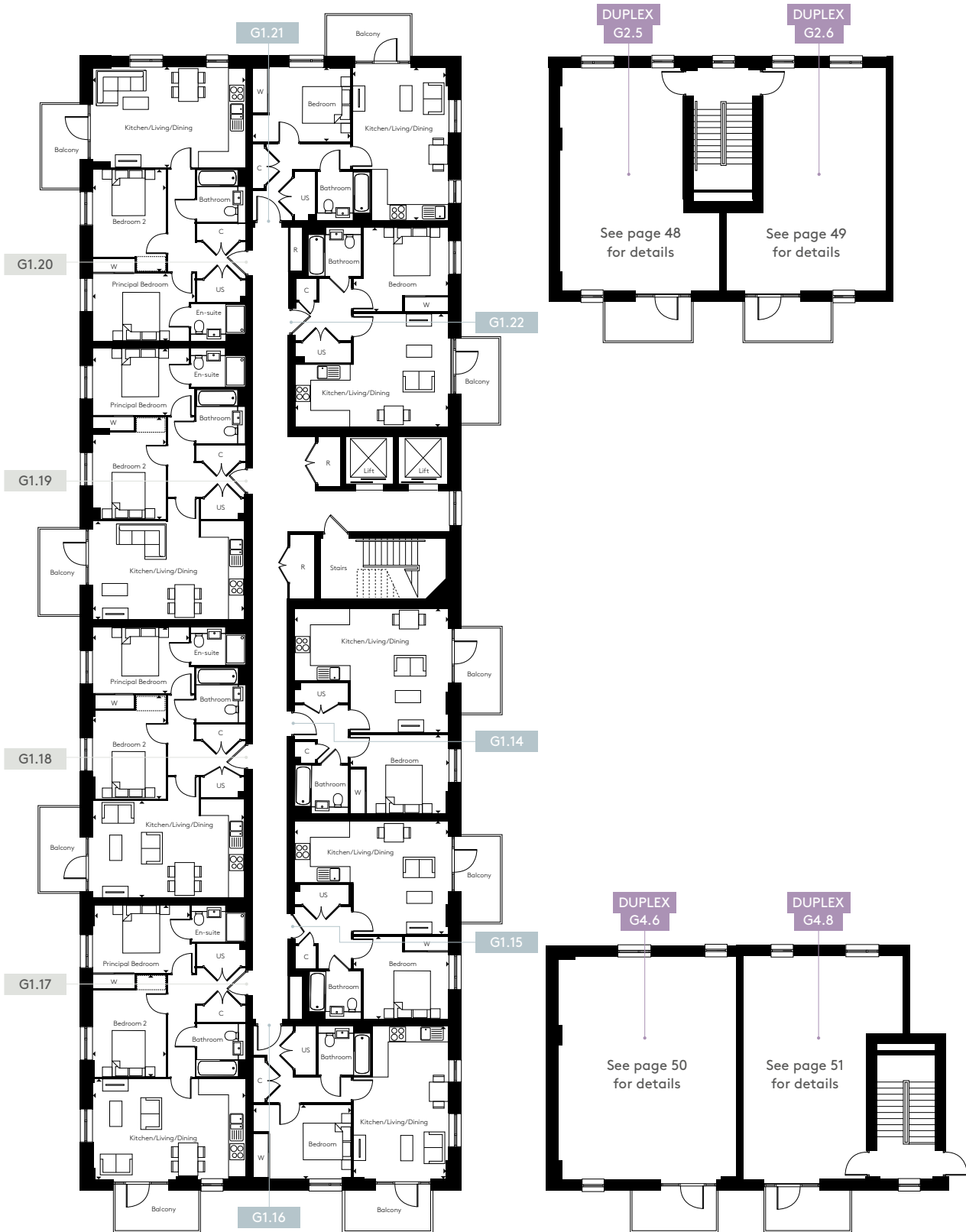
| | |
|--|---|
| G1.5 – 1 bedroom – 580 sq ft | G1.9 – 2 bedroom – 756 sq ft |
| Kitchen/Living/Dining 5.05m x 6.35m 16'6" x 20'9" | Kitchen/Living/Dining 4.05m x 6.20m 13'3" x 20'4" |
| Bedroom 3.25m x 4.05m 10'7" x 13'3" | Principal Bedroom 4.15m x 2.75m 13'7" x 9'0" |
| | Bedroom 2 3.55m x 3.00m 11'7" x 9'10" |
| G1.6 – 1 bedroom – 548 sq ft | G1.10 – 2 bedroom – 753 sq ft |
| Kitchen/Living/Dining 4.60m x 6.35m 15'1" x 20'9" | Kitchen/Living/Dining 4.05m x 6.25m 13'3" x 20'6" |
| Bedroom 3.45m x 3.90m 11'3" x 12'9" | Principal Bedroom 2.60m x 3.95m 8'6" x 12'11" |
| | Bedroom 2 3.55m x 3.00m 11'7" x 9'10" |
| G1.7 – 1 bedroom – 548 sq ft | G1.11 – 2 bedroom – 761 sq ft |
| Kitchen/Living/Dining 6.25m x 3.95m 20'6" x 12'11" | Kitchen/Living/Dining 4.10m x 6.35m 13'5" x 20'9" |
| Bedroom 3.00m x 4.00m 9'10" x 13'1" | Principal Bedroom 2.80m x 4.15m 9'2" x 13'7" |
| | Bedroom 2 4.15m x 2.90m 13'7" x 9'6" |
| G1.12 – 1 bedroom – 548 sq ft | G2.1 – 2 bedroom duplex (upper) |
| Kitchen/Living/Dining 6.25m x 3.95m 20'6" x 12'11" | See page 46 for details |
| Bedroom 3.00m x 4.00m 9'10" x 13'1" | |
| | G2.2 – 2 bedroom duplex (upper) |
| G1.13 – 1 bedroom – 551 sq ft | See page 46 for details |
| Kitchen/Living/Dining 4.60m x 6.35m 15'1" x 20'9" | |
| Bedroom 3.45m x 3.90m 11'3" x 12'9" | |
| | G4.1 – 2 bedroom duplex (upper) |
| G1.8 – 2 bedroom – 761 sq ft | See page 47 for details |
| Kitchen/Living/Dining 4.10m x 6.35m 13'5" x 20'9" | |
| Principal Bedroom 2.80m x 4.15m 9'2" x 13'7" | |
| Bedroom 2 4.15m x 2.90m 13'7" x 9'6" | G4.2 – 2 bedroom duplex (upper) |
| | See page 46 for details |



All floorplans are not to scale. Layouts provide approximate measurements only and are subject to planning. Dimensions, which are taken from the indicated points of measurement, are for guidance only and are not intended to be used for window treatments or items of furniture. Bathroom and kitchen layouts are indicative only and are subject to change. Wardrobe size and position may vary. The total square footage given is an estimate only. In the event of your making an offer you should refer to the contract documentation for information and contractual provisions relating to net sales area. The information contained within this document does not constitute part of any offer, contract, or warranty. Whilst the plans have been prepared with all due care for the convenience of the intending purchaser, the information contained herein is a preliminary guide only.

GREEN SQUARE

FLOOR 2 WEST



G1.14 – 1 bedroom – 580 sq ft

Kitchen/Living/Dining
5.05m x 6.35m 16'6" x 20'9"
Bedroom
3.25m x 4.05m 10'7" x 13'3"

G1.15 – 1 bedroom – 548 sq ft

Kitchen/Living/Dining
4.60m x 6.35m 15'1" x 20'9"
Bedroom
3.45m x 3.90m 11'3" x 12'9"

G1.16 – 1 bedroom – 548 sq ft

Kitchen/Living/Dining
6.25m x 3.95m 20'6" x 12'11"
Bedroom
3.00m x 4.00m 9'10" x 13'1"

G1.21 – 1 bedroom – 548 sq ft

Kitchen/Living/Dining
6.25m x 3.95m 20'6" x 12'11"
Bedroom
3.00m x 4.00m 9'10" x 13'1"

G1.22 – 1 bedroom – 551 sq ft

Kitchen/Living/Dining
4.60m x 6.35m 15'1" x 20'9"
Bedroom
3.45m x 3.90m 11'3" x 12'9"

G1.17 – 2 bedroom – 761 sq ft

Kitchen/Living/Dining
4.10m x 6.35m 13'5" x 20'9"
Principal Bedroom
2.80m x 4.15m 9'2" x 13'7"
Bedroom 2
4.15m x 2.90m 13'7" x 9'6"

G1.18 – 2 bedroom – 756 sq ft

Kitchen/Living/Dining
4.05m x 6.20m 13'3" x 20'4"
Principal Bedroom
4.15m x 2.75m 13'7" x 9'0"
Bedroom 2
4.15m x 3.00m 13'7" x 9'10"

G1.19 – 2 bedroom – 753 sq ft

Kitchen/Living/Dining
4.05m x 6.25m 13'3" x 20'6"
Principal Bedroom
2.60m x 3.95m 8'6" x 12'11"
Bedroom 2
4.15m x 3.00m 13'7" x 9'10"

G1.20 – 2 bedroom – 761 sq ft

Kitchen/Living/Dining
4.10m x 6.35m 13'5" x 20'9"
Principal Bedroom
2.80m x 4.15m 9'2" x 13'7"
Bedroom 2
4.15m x 2.90m 13'7" x 9'6"

G2.5 – 3 bedroom duplex (lower)

See page 48 for details

G2.6 – 3 bedroom duplex (lower)

See page 49 for details

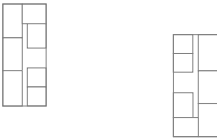
G4.6 – 3 bedroom duplex (lower)

See page 50 for details

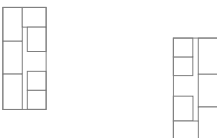
G4.8 – 3 bedroom duplex (lower)

See page 51 for details

Floor 8



Floor 7



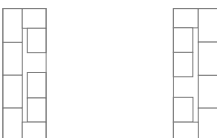
Floor 6



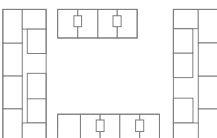
Floor 5



Floor 4



Floor 3



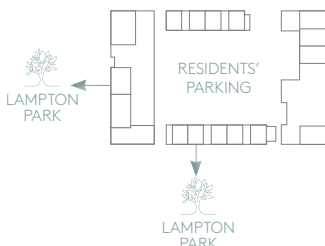
Floor 2



Floor 1



Ground



All floorplans are not to scale. Layouts provide approximate measurements only and are subject to planning. Dimensions, which are taken from the indicated points of measurement, are for guidance only and are not intended to be used for window treatments or items of furniture. Bathroom and kitchen layouts are indicative only and are subject to change. Wardrobe size and position may vary. The total square footage given is an estimate only. In the event of your making an offer you should refer to the contract documentation for information and contractual provisions relating to net sales area. The information contained within this document does not constitute part of any offer, contract, or warranty. Whilst the plans have been prepared with all due care for the convenience of the intending purchaser, the information contained herein is a preliminary guide only.

GREEN SQUARE

FLOOR 3 WEST



1 bedroom apartment 2 bedroom apartment 3 bedroom duplex

C = Cupboard W = Wardrobe R = Riser US = Utility Store [Dashed Box] = Indicative Wardrobe Position



G1.23 – 1 bedroom – 580 sq ft

Kitchen/Living/Dining
5.05m x 6.35m 16'6" x 20'9"
Bedroom
3.25m x 4.05m 10'7" x 13'3"

G1.24 – 1 bedroom – 548 sq ft

Kitchen/Living/Dining
4.60m x 6.35m 15'1" x 20'9"
Bedroom
3.45m x 3.90m 11'3" x 12'9"

G1.25 – 1 bedroom – 548 sq ft

Kitchen/Living/Dining
6.25m x 3.95m 20'6" x 12'11"
Bedroom
3.00m x 4.00m 9'10" x 13'1"

G1.30 – 1 bedroom – 548 sq ft

Kitchen/Living/Dining
6.25m x 3.95m 20'6" x 12'11"
Bedroom
3.00m x 4.00m 9'10" x 13'1"

G1.31 – 1 bedroom – 551 sq ft

Kitchen/Living/Dining
4.60m x 6.35m 15'1" x 20'9"
Bedroom
3.45m x 3.90m 11'3" x 12'9"

G1.26 – 2 bedroom – 761 sq ft

Kitchen/Living/Dining
4.10m x 6.35m 13'5" x 20'9"
Principal Bedroom
2.80m x 4.15m 9'2" x 13'7"
Bedroom 2
4.15m x 2.90m 13'7" x 9'6"

G1.27 – 2 bedroom – 756 sq ft

Kitchen/Living/Dining
4.05m x 6.20m 13'3" x 20'4"
Principal Bedroom
4.15m x 2.75m 13'7" x 9'0"
Bedroom 2
4.15m x 3.00m 13'7" x 9'10"

G1.28 – 2 bedroom – 753 sq ft

Kitchen/Living/Dining
4.05m x 6.25m 13'3" x 20'6"
Principal Bedroom
2.60m x 3.95m 8'6" x 12'11"
Bedroom 2
4.15m x 3.00m 13'7" x 9'10"

G1.29 – 2 bedroom – 761 sq ft

Kitchen/Living/Dining
4.10m x 6.35m 13'5" x 20'9"
Principal Bedroom
2.80m x 4.15m 9'2" x 13'7"
Bedroom 2
4.15m x 2.90m 13'7" x 9'6"

G2.5 – 3 bedroom duplex (upper)

See page 48 for details

G2.6 – 3 bedroom duplex (upper)

See page 49 for details

G4.6 – 3 bedroom duplex (upper)

See page 50 for details

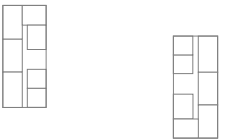
G4.8 – 3 bedroom duplex (upper)

See page 51 for details

Floor 8



Floor 7



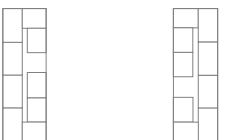
Floor 6



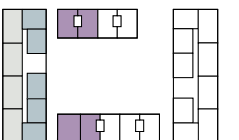
Floor 5



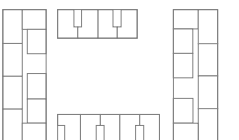
Floor 4



Floor 3



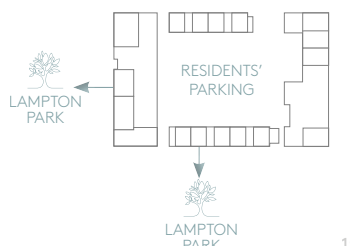
Floor 2



Floor 1



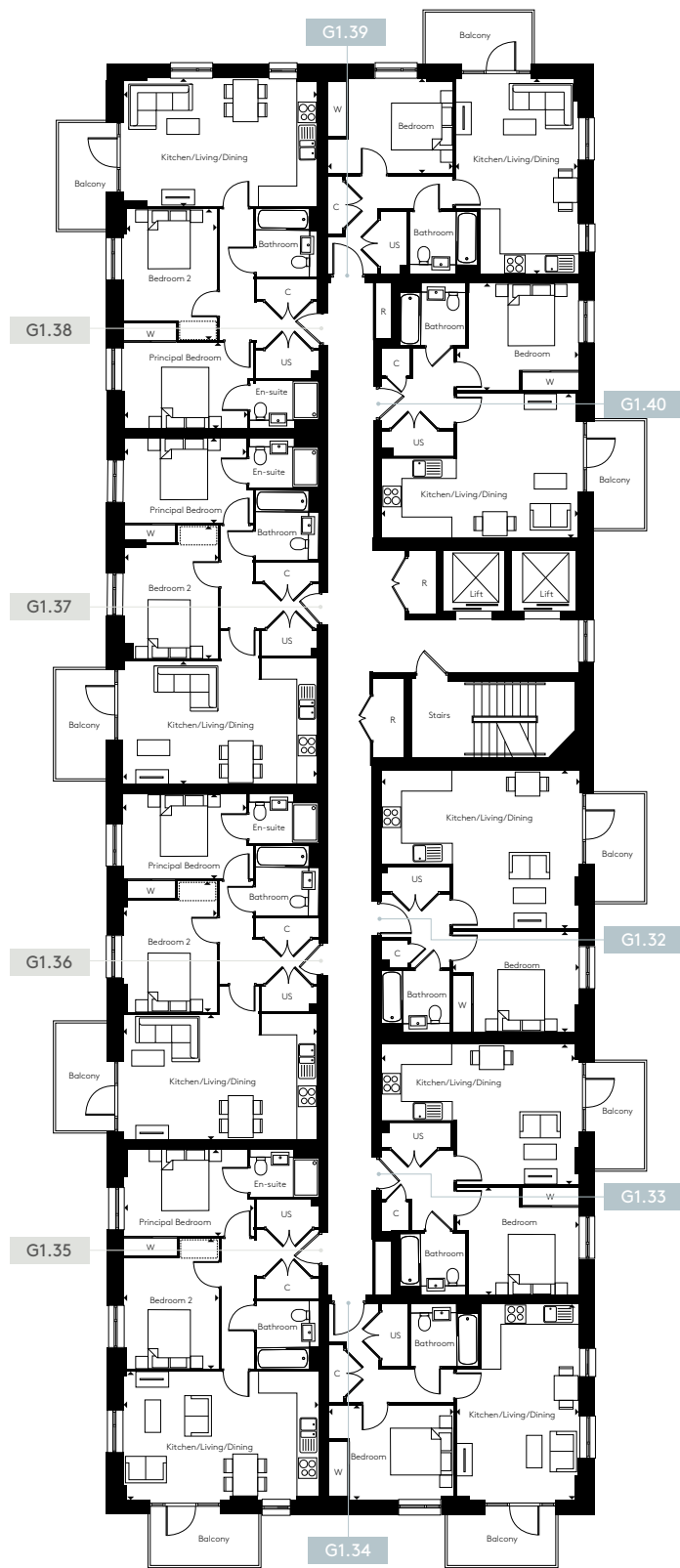
Ground



All floorplans are not to scale. Layouts provide approximate measurements only and are subject to planning. Dimensions, which are taken from the indicated points of measurement, are for guidance only and are not intended to be used for window treatments or items of furniture. Bathroom and kitchen layouts are indicative only and are subject to change. Wardrobe size and position may vary. The total square footage given is an estimate only. In the event of your making an offer you should refer to the contract documentation for information and contractual provisions relating to net sales area. The information contained within this document does not constitute part of any offer, contract, or warranty. Whilst the plans have been prepared with all due care for the convenience of the intending purchaser, the information contained herein is a preliminary guide only.

GREEN SQUARE

FLOOR 4 WEST



G1.32 – 1 bedroom – 580 sq ft

Kitchen/Living/Dining
5.05m x 6.35m 16'6" x 20'9"
Bedroom
3.25m x 4.05m 10'7" x 13'3"

G1.33 – 1 bedroom – 548 sq ft

Kitchen/Living/Dining
4.60m x 6.35m 15'1" x 20'9"
Bedroom
3.45m x 3.90m 11'3" x 12'9"

G1.34 – 1 bedroom – 548 sq ft

Kitchen/Living/Dining
6.25m x 3.95m 20'6" x 12'11"
Bedroom
3.00m x 4.00m 9'10" x 13'1"

G1.39 – 1 bedroom – 548 sq ft

Kitchen/Living/Dining
6.25m x 3.95m 20'6" x 12'11"
Bedroom
3.00m x 4.00m 9'10" x 13'1"

G1.40 – 1 bedroom – 551 sq ft

Kitchen/Living/Dining
4.60m x 6.35m 15'1" x 20'9"
Bedroom
3.45m x 3.90m 11'3" x 12'9"

G1.35 – 2 bedroom – 761 sq ft

Kitchen/Living/Dining
4.10m x 6.35m 13'5" x 20'9"
Principal Bedroom
2.80m x 4.15m 9'2" x 13'7"
Bedroom 2
4.15m x 2.90m 13'7" x 9'6"

G1.36 – 2 bedroom – 756 sq ft

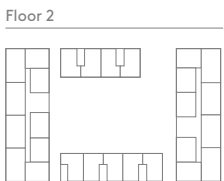
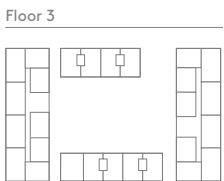
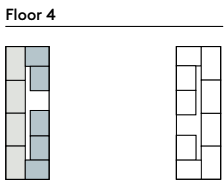
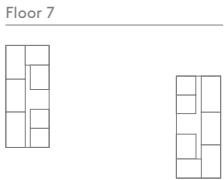
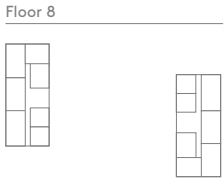
Kitchen/Living/Dining
4.05m x 6.20m 13'3" x 20'4"
Principal Bedroom
4.15m x 2.75m 13'7" x 9'0"
Bedroom 2
4.15m x 3.00m 13'7" x 9'10"

G1.37 – 2 bedroom – 753 sq ft

Kitchen/Living/Dining
4.05m x 6.25m 13'3" x 20'6"
Principal Bedroom
2.60m x 3.95m 8'6" x 12'11"
Bedroom 2
4.15m x 3.00m 13'7" x 9'10"

G1.38 – 2 bedroom – 761 sq ft

Kitchen/Living/Dining
4.10m x 6.35m 13'5" x 20'9"
Principal Bedroom
2.80m x 4.15m 9'2" x 13'7"
Bedroom 2
4.15m x 2.90m 13'7" x 9'6"



1 bedroom apartment 2 bedroom apartment

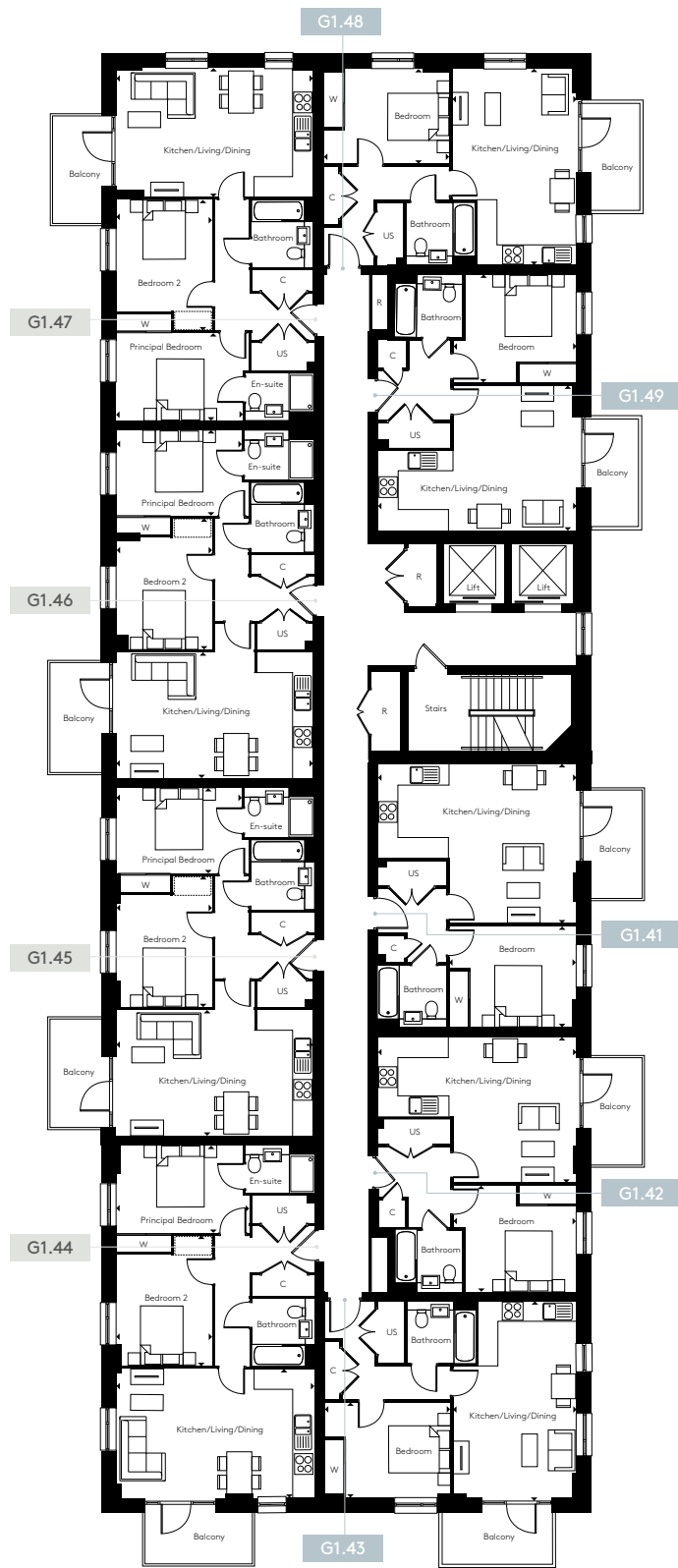


C = Cupboard W = Wardrobe R = Riser US = Utility Store = Indicative Wardrobe Position

All floorplans are not to scale. Layouts provide approximate measurements only and are subject to planning. Dimensions, which are taken from the indicated points of measurement, are for guidance only and are not intended to be used for window treatments or items of furniture. Bathroom and kitchen layouts are indicative only and are subject to change. Wardrobe size and position may vary. The total square footage given is an estimate only. In the event of your making an offer you should refer to the contract documentation for information and contractual provisions relating to net sales area. The information contained within this document does not constitute part of any offer, contract, or warranty. Whilst the plans have been prepared with all due care for the convenience of the intending purchaser, the information contained herein is a preliminary guide only.

GREEN SQUARE

FLOOR 5 WEST



G1.41 – 1 bedroom – 580 sq ft

Kitchen/Living/Dining
5.05m x 6.35m 16'6" x 20'9"
Bedroom
3.25m x 4.05m 10'7" x 13'3"

G1.42 – 1 bedroom – 548 sq ft

Kitchen/Living/Dining
4.60m x 6.35m 15'1" x 20'9"
Bedroom
3.45m x 3.90m 11'3" x 12'9"

G1.43 – 1 bedroom – 548 sq ft

Kitchen/Living/Dining
6.25m x 3.95m 20'6" x 12'11"
Bedroom
3.00m x 4.00m 9'10" x 13'1"

G1.48 – 1 bedroom – 548 sq ft

Kitchen/Living/Dining
6.25m x 3.95m 20'6" x 12'11"
Bedroom
3.00m x 4.00m 9'10" x 13'1"

G1.49 – 1 bedroom – 551 sq ft

Kitchen/Living/Dining
4.60m x 6.35m 15'1" x 20'9"
Bedroom
3.45m x 3.90m 11'3" x 12'9"

G1.44 – 2 bedroom – 761 sq ft

Kitchen/Living/Dining
4.10m x 6.35m 13'5" x 20'9"
Principal Bedroom
2.80m x 4.15m 9'2" x 13'7"
Bedroom 2
4.15m x 2.90m 13'7" x 9'6"

G1.45 – 2 bedroom – 756 sq ft

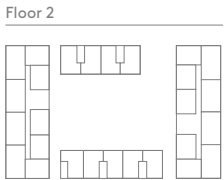
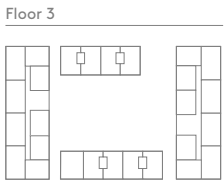
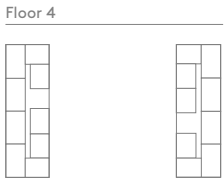
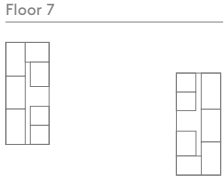
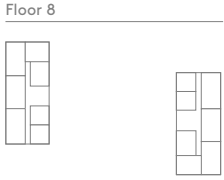
Kitchen/Living/Dining
4.05m x 6.20m 13'3" x 20'4"
Principal Bedroom
4.15m x 2.75m 13'7" x 9'0"
Bedroom 2
4.15m x 3.00m 13'7" x 9'10"

G1.46 – 2 bedroom – 753 sq ft

Kitchen/Living/Dining
4.05m x 6.25m 13'3" x 20'6"
Principal Bedroom
2.60m x 3.95m 8'6" x 12'11"
Bedroom 2
4.15m x 3.00m 13'7" x 9'10"

G1.47 – 2 bedroom – 761 sq ft

Kitchen/Living/Dining
4.10m x 6.35m 13'5" x 20'9"
Principal Bedroom
2.80m x 4.15m 9'2" x 13'7"
Bedroom 2
4.15m x 2.90m 13'7" x 9'6"



1 bedroom apartment 2 bedroom apartment

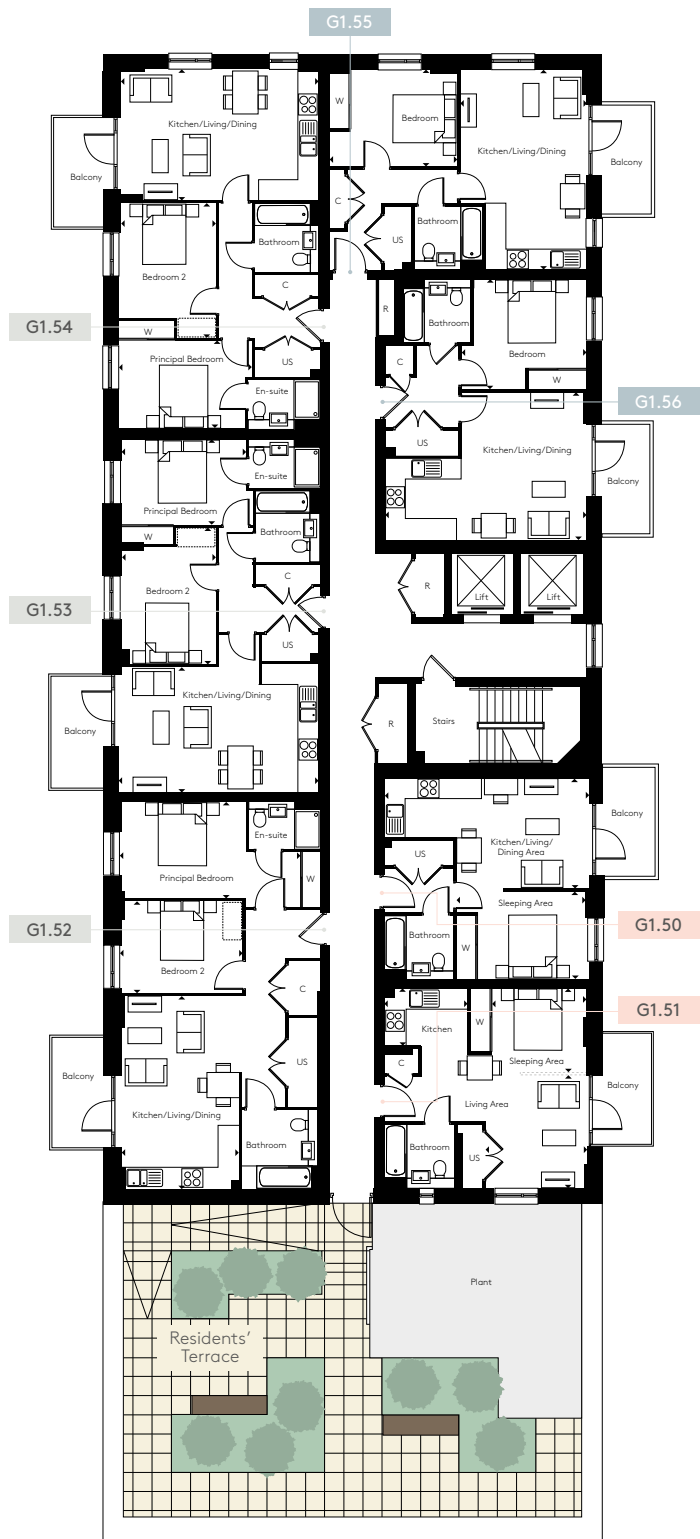
C = Cupboard W = Wardrobe R = Riser US = Utility Store = Indicative Wardrobe Position



All floorplans are not to scale. Layouts provide approximate measurements only and are subject to planning. Dimensions, which are taken from the indicated points of measurement, are for guidance only and are not intended to be used for window treatments or items of furniture. Bathroom and kitchen layouts are indicative only and are subject to change. Wardrobe size and position may vary. The total square footage given is an estimate only. In the event of your making an offer you should refer to the contract documentation for information and contractual provisions relating to net sales area. The information contained within this document does not constitute part of any offer, contract, or warranty. Whilst the plans have been prepared with all due care for the convenience of the intending purchaser, the information contained herein is a preliminary guide only.

GREEN SQUARE

FLOOR 6 WEST



G1.50 – studio – 437 sq ft

| | | |
|---------------|---------------|---------------|
| Living Area | 3.45m x 6.35m | 11'3" x 20'9" |
| Sleeping Area | 4.10m x 2.75m | 13'5" x 9'0" |

G1.51 – studio – 429 sq ft

| | | |
|---------------|---------------|---------------|
| Living Area | 3.50m x 3.10m | 11'5" x 10'2" |
| Kitchen | 1.80m x 2.60m | 5'10" x 8'6" |
| Sleeping Area | 2.60m x 3.00m | 8'6" x 9'10" |

G1.55 – 1 bedroom – 548 sq ft

| | | |
|-----------------------|---------------|----------------|
| Kitchen/Living/Dining | 6.25m x 3.95m | 20'6" x 12'11" |
| Bedroom | 3.00m x 4.00m | 9'10" x 13'1" |

G1.56 – 1 bedroom – 551 sq ft

| | | |
|-----------------------|---------------|---------------|
| Kitchen/Living/Dining | 4.60m x 6.35m | 15'1" x 20'9" |
| Bedroom | 3.45m x 3.90m | 11'3" x 12'9" |

G1.52 – 2 bedroom – 819 sq ft

| | | |
|-----------------------|---------------|-----------------|
| Kitchen/Living/Dining | 6.05m x 3.65m | 19'10" x 11'11" |
| Principal Bedroom | 3.05m x 5.60m | 10'0" x 18'4" |
| Bedroom 2 | 2.85m x 3.65m | 9'4" x 11'11" |

G1.53 – 2 bedroom – 753 sq ft

| | | |
|-----------------------|---------------|---------------|
| Kitchen/Living/Dining | 4.05m x 6.25m | 13'3" x 20'6" |
| Principal Bedroom | 2.60m x 3.95m | 8'6" x 12'11" |
| Bedroom 2 | 4.15m x 3.00m | 13'7" x 9'10" |

G1.54 – 2 bedroom – 761 sq ft

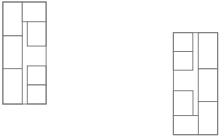
| | | |
|-----------------------|---------------|---------------|
| Kitchen/Living/Dining | 4.10m x 6.35m | 13'5" x 20'9" |
| Principal Bedroom | 2.80m x 4.15m | 9'2" x 13'7" |
| Bedroom 2 | 4.15m x 2.90m | 13'7" x 9'6" |

Studio apartment 1 bedroom apartment 2 bedroom apartment

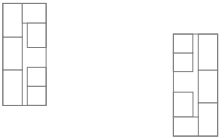
C = Cupboard W = Wardrobe R = Riser US = Utility Store [] = Indicative Wardrobe Position [] = Indicative Living/Sleeping Areas



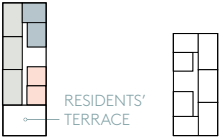
Floor 8



Floor 7



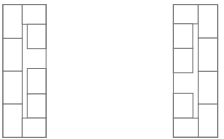
Floor 6



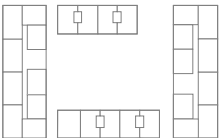
Floor 5



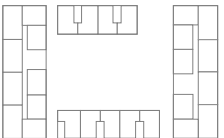
Floor 4



Floor 3



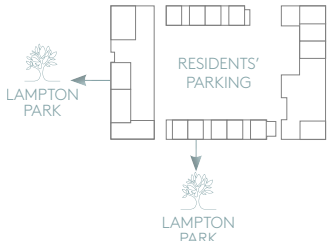
Floor 2



Floor 1



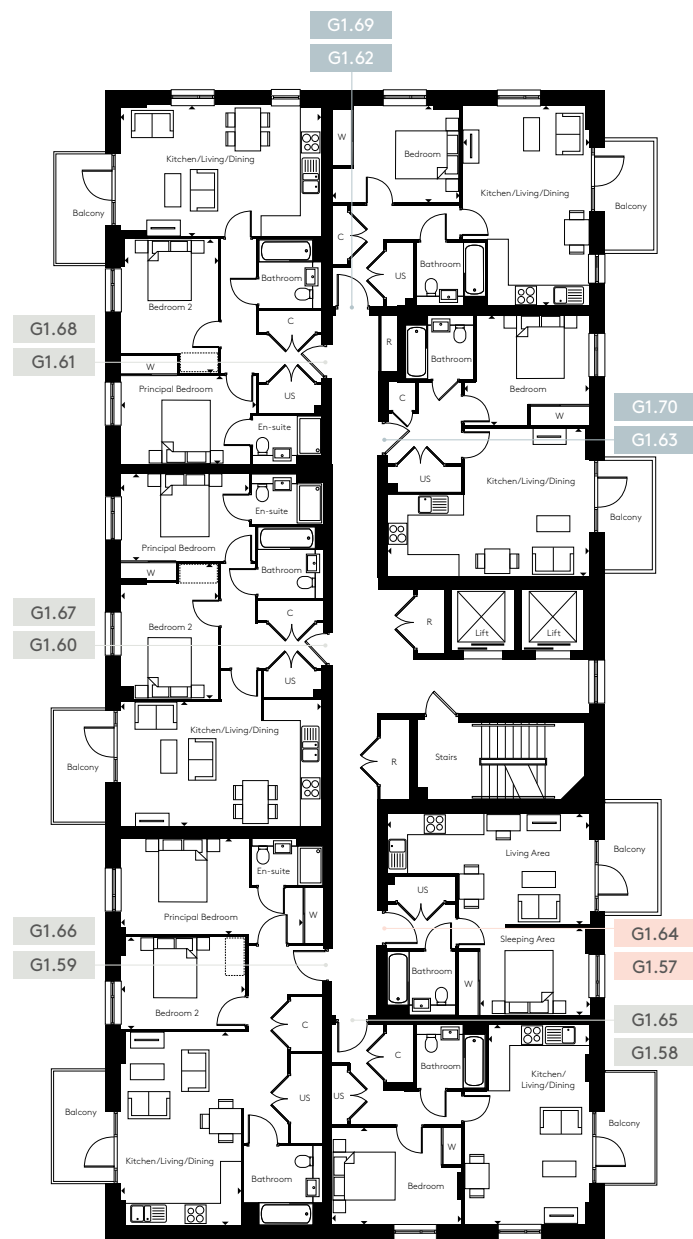
Ground



All floorplans are not to scale. Layouts provide approximate measurements only and are subject to planning. Dimensions, which are taken from the indicated points of measurement, are for guidance only and are not intended to be used for window treatments or items of furniture. Bathroom and kitchen layouts are indicative only and are subject to change. Wardrobe size and position may vary. The total square footage given is an estimate only. In the event of your making an offer you should refer to the contract documentation for information and contractual provisions relating to net sales area. The information contained within this document does not constitute part of any offer, contract, or warranty. Whilst the plans have been prepared with all due care for the convenience of the intending purchaser, the information contained herein is a preliminary guide only.

GREEN SQUARE

FLOORS 7 AND 8 WEST



G1.57, G1.64 – studio – 437 sq ft

| | | |
|---------------|---------------|---------------|
| Living Area | 3.45m x 6.35m | 11'3" x 20'9" |
| Sleeping Area | 3.40m x 2.75m | 11'1" x 9'0" |

G1.58, G1.65 – 1 bedroom – 544 sq ft

| | | |
|-----------------------|---------------|---------------|
| Kitchen/Living/Dining | 6.25m x 3.15m | 20'6" x 10'4" |
| Bedroom | 3.00m x 4.05m | 9'10" x 13'3" |

G1.62, G1.69 – 1 bedroom – 548 sq ft

| | | |
|-----------------------|---------------|----------------|
| Kitchen/Living/Dining | 6.25m x 3.95m | 20'6" x 12'11" |
| Bedroom | 3.00m x 4.00m | 9'10" x 13'1" |

G1.63, G1.70 – 1 bedroom – 551 sq ft

| | | |
|-----------------------|---------------|---------------|
| Kitchen/Living/Dining | 4.60m x 6.35m | 15'1" x 20'9" |
| Bedroom | 3.45m x 3.90m | 11'3" x 12'9" |

G1.59, G1.66 – 2 bedroom – 822 sq ft

| | | |
|-----------------------|---------------|----------------|
| Kitchen/Living/Dining | 6.05m x 3.70m | 19'10" x 12'1" |
| Principal Bedroom | 3.05m x 5.60m | 10'0" x 18'4" |
| Bedroom 2 | 2.85m x 3.80m | 9'4" x 12'5" |

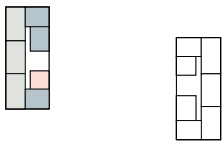
G1.60, G1.67 – 2 bedroom – 753 sq ft

| | | |
|-----------------------|---------------|----------------|
| Kitchen/Living/Dining | 4.05m x 6.25m | 13'3" x 20'6" |
| Principal Bedroom | 3.30m x 3.95m | 10'9" x 12'11" |
| Bedroom 2 | 4.15m x 3.00m | 13'7" x 9'10" |

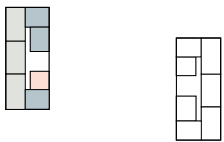
G1.61, G1.68 – 2 bedroom – 761 sq ft

| | | |
|-----------------------|---------------|---------------|
| Kitchen/Living/Dining | 4.10m x 6.35m | 13'5" x 20'9" |
| Principal Bedroom | 2.80m x 4.15m | 9'2" x 13'7" |
| Bedroom 2 | 4.15m x 3.00m | 13'7" x 9'10" |

Floor 8



Floor 7



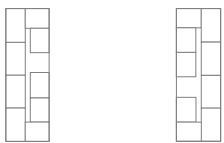
Floor 6



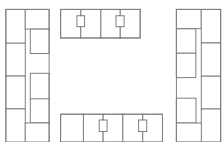
Floor 5



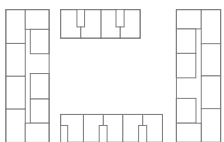
Floor 4



Floor 3



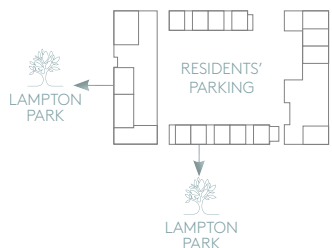
Floor 2



Floor 1



Ground



Studio apartment 1 bedroom apartment 2 bedroom apartment

C = Cupboard W = Wardrobe R = Riser US = Utility Store = Indicative Wardrobe Position

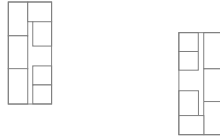


All floorplans are not to scale. Layouts provide approximate measurements only and are subject to planning. Dimensions, which are taken from the indicated points of measurement, are for guidance only and are not intended to be used for window treatments or items of furniture. Bathroom and kitchen layouts are indicative only and are subject to change. Wardrobe size and position may vary. The total square footage given is an estimate only. In the event of your making an offer you should refer to the contract documentation for information and contractual provisions relating to net sales area. The information contained within this document does not constitute part of any offer, contract, or warranty. Whilst the plans have been prepared with all due care for the convenience of the intending purchaser, the information contained herein is a preliminary guide only.

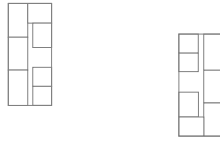
GREEN SQUARE

GROUND EAST

Floor 8



Floor 7



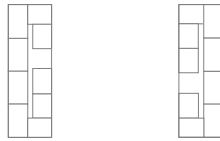
Floor 6



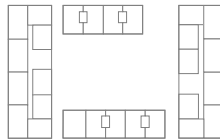
Floor 5



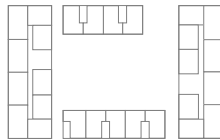
Floor 4



Floor 3



Floor 2



Floor 1



Ground



G2.3 – 2 bedroom duplex (lower)

See page 46 for details

G2.4 – 2 bedroom duplex (lower)

See page 46 for details

G4.3 – 2 bedroom duplex (lower)

See page 46 for details

G4.4 – 2 bedroom duplex (lower)

See page 46 for details

G4.5 – 2 bedroom duplex (lower)

See page 46 for details

G3.1 – 3 bedroom duplex (lower)

See page 53 for details

G3.2 – 3 bedroom duplex (lower)

See page 54 for details

G3.3 – 3 bedroom duplex (lower)

See page 54 for details

G3.4 – 3 bedroom duplex (lower)

See page 55 for details

All floorplans are not to scale. Layouts provide approximate measurements only and are subject to planning. Dimensions, which are taken from the indicated points of measurement, are for guidance only and are not intended to be used for window treatments or items of furniture. Bathroom and kitchen layouts are indicative only and are subject to change. Wardrobe size and position may vary. The total square footage given is an estimate only. In the event of your making an offer you should refer to the contract documentation for information and contractual provisions relating to net sales area. The information contained within this document does not constitute part of any offer, contract, or warranty. Whilst the plans have been prepared with all due care for the convenience of the intending purchaser, the information contained herein is a preliminary guide only.



2 bedroom duplex 3 bedroom duplex

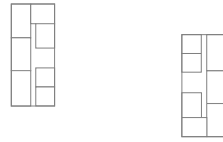
C = Cupboard W = Wardrobe R = Riser US = Utility Store = Indicative Wardrobe Position Active charging points



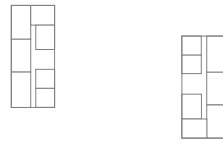
GREEN SQUARE

FLOOR 1 EAST

Floor 8



Floor 7



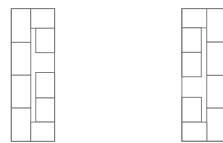
Floor 6



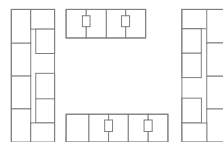
Floor 5



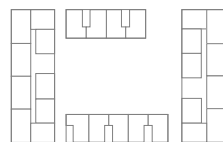
Floor 4



Floor 3



Floor 2



Floor 1



Ground



G3.6 – studio – 437 sq ft

Living Area
5.30m x 3.50m 17'4" x 11'5"
Kitchen
2.10m x 2.65m 6'10" x 8'8"

G3.5 – 1 bedroom – 607 sq ft

Kitchen/Living/Dining
5.3m x 6.25m 14'4" x 20'6"
Bedroom
3.35m x 4.10m 10'11" x 13'5"
Podium Garden
10.9m x 3.60m 35'9" x 11'9"

G3.7 – 2 bedroom – 757 sq ft

Kitchen/Living/Dining
4.05m x 6.20m 13'3" x 20'4"
Principal Bedroom
4.15m x 2.75m 13'7" x 9'0"
Bedroom 2
4.15m x 3.00m 13'7" x 9'10"

G3.8 – 2 bedroom – 815 sq ft

Kitchen/Living/Dining
6.55m x 4.75m 21'5" x 15'6"
Principal Bedroom
4.00m x 2.75m 13'1" x 9'0"
Bedroom 2
6.35m x 2.75m 20'9" x 9'0"

G2.3 – 2 bedroom duplex (upper)

See page 46 for details

G2.4 – 2 bedroom duplex (upper)

See page 46 for details

G4.3 – 2 bedroom duplex (upper)

See page 46 for details

G4.4 – 2 bedroom duplex (upper)

See page 46 for details

G4.5 – 2 bedroom duplex (upper)

See page 46 for details

G3.1 – 3 bedroom duplex (upper)

See page 53 for details

G3.2 – 3 bedroom duplex (upper)

See page 54 for details

G3.3 – 3 bedroom duplex (upper)

See page 54 for details

G3.4 – 3 bedroom duplex (upper)

See page 55 for details



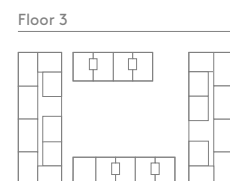
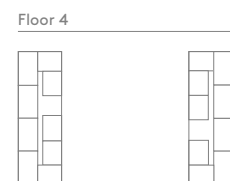
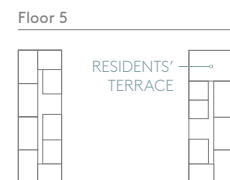
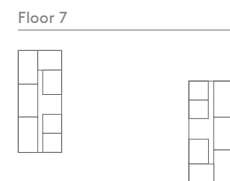
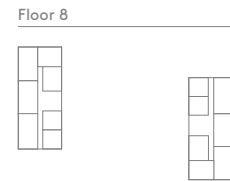
Studio apartment
 1 bedroom apartment
 2 bedroom apartment
 2 bedroom duplex
 3 bedroom duplex

C = Cupboard W = Wardrobe R = Riser US = Utility Store = Indicative Wardrobe Position

All floorplans are not to scale. Layouts provide approximate measurements only and are subject to planning. Dimensions, which are taken from the indicated points of measurement, are for guidance only and are not intended to be used for window treatments or items of furniture. Bathroom and kitchen layouts are indicative only and are subject to change. Wardrobe size and position may vary. The total square footage given is an estimate only. In the event of your making an offer you should refer to the contract documentation for information and contractual provisions relating to net sales area. The information contained within this document does not constitute part of any offer, contract, or warranty. Whilst the plans have been prepared with all due care for the convenience of the intending purchaser, the information contained herein is a preliminary guide only.

GREEN SQUARE

FLOOR 2 EAST



G3.9 – 1 bedroom – 551 sq ft

Kitchen/Living/Dining
4.60m x 6.35m 15'1" x 20'9"
Bedroom
3.45m x 3.90m 11'3" x 12'9"

G3.10 – 1 bedroom – 548 sq ft

Kitchen/Living/Dining
6.25m x 3.95m 20'6" x 12'11"
Bedroom
3.00m x 4.00m 9'10" x 13'1"

G3.15 – 1 bedroom – 546 sq ft

Kitchen/Living/Dining
6.25m x 3.95m 20'6" x 12'11"
Bedroom
3.00m x 4.00m 9'10" x 13'1"

G3.16 – 1 bedroom – 547 sq ft

Kitchen/Living/Dining
4.60m x 6.35m 15'1" x 20'9"
Bedroom
3.45m x 3.90m 11'3" x 12'9"

G3.17 – 1 bedroom – 581 sq ft

Kitchen/Living/Dining
5.05m x 6.35m 16'6" x 20'9"
Bedroom
3.25m x 4.05m 10'7" x 13'3"

G3.11 – 2 bedroom – 762 sq ft

Kitchen/Living/Dining
4.10m x 6.35m 13'5" x 20'9"
Principal Bedroom
2.80m x 4.15m 9'2" x 13'7"
Bedroom 2
4.15m x 2.90m 13'7" x 9'6"

G3.12 – 2 bedroom – 757 sq ft

Kitchen/Living/Dining
4.05m x 6.15m 13'3" x 20'2"
Principal Bedroom
2.75m x 3.90m 9'0" x 12'9"
Bedroom 2
4.35m x 2.85m 14'3" x 9'4"

G3.13 – 2 bedroom – 756 sq ft

Kitchen/Living/Dining
4.15m x 6.25m 13'7" x 20'6"
Principal Bedroom
2.75m x 3.95m 9'0" x 12'11"
Bedroom 2
4.20m x 3.05m 13'9" x 10'0"

G3.14 – 2 bedroom – 756 sq ft

Kitchen/Living/Dining
4.10m x 6.35m 13'5" x 20'9"
Principal Bedroom
2.80m x 4.15m 9'2" x 13'7"
Bedroom 2
4.15m x 2.90m 13'7" x 9'6"

G2.7 – 3 bedroom duplex (lower)

See page 49 for details

G2.8 – 3 bedroom duplex (lower)

See page 48 for details

G4.7 – 3 bedroom duplex (lower)

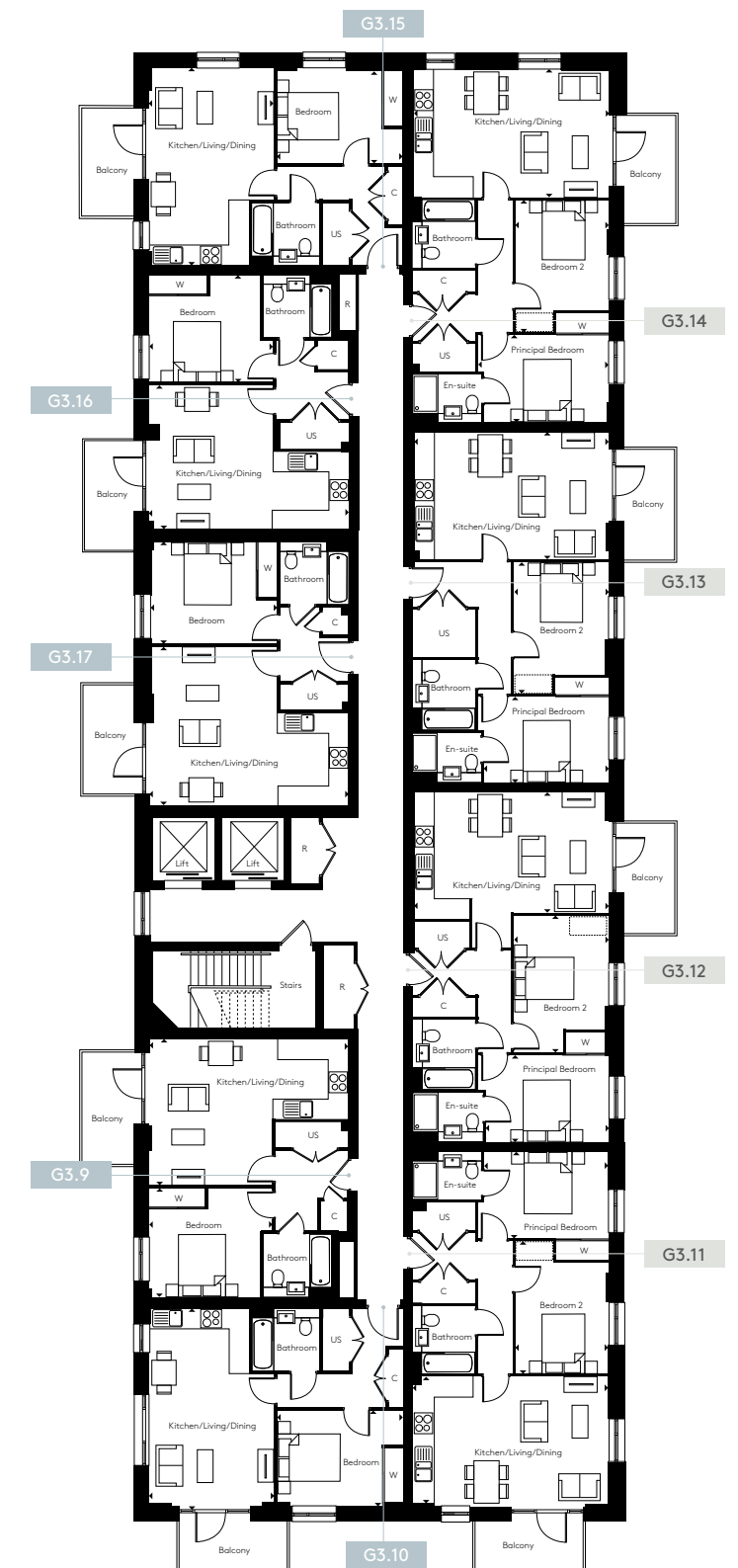
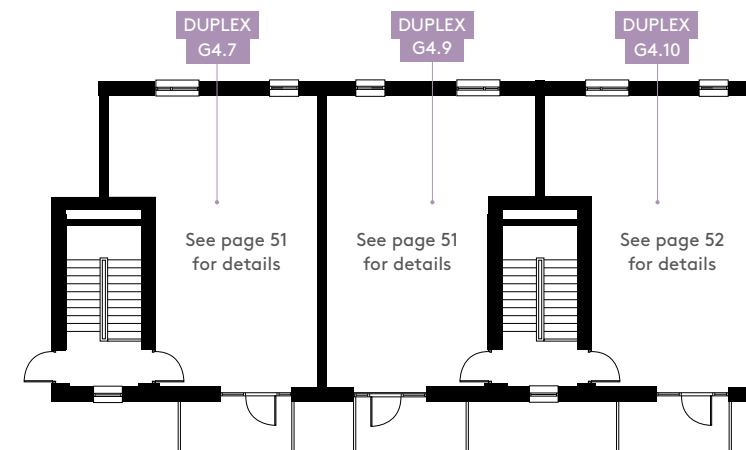
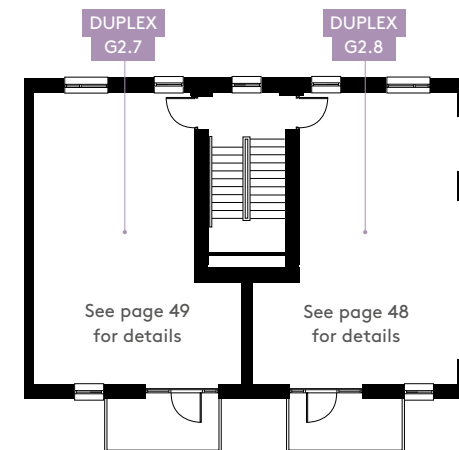
See page 51 for details

G4.9 – 3 bedroom duplex (lower)

See page 51 for details

G4.10 – 3 bedroom duplex (lower)

See page 52 for details



1 bedroom apartment 2 bedroom apartment 3 bedroom duplex

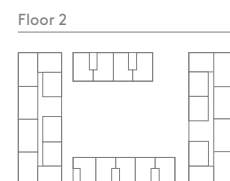
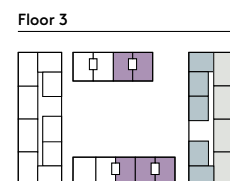
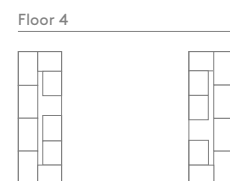
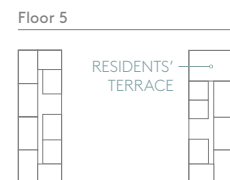
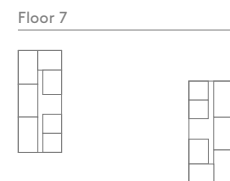
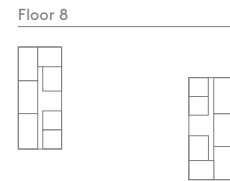
C = Cupboard W = Wardrobe R = Riser US = Utility Store = Indicative Wardrobe Position

All floorplans are not to scale. Layouts provide approximate measurements only and are subject to planning. Dimensions, which are taken from the indicated points of measurement, are for guidance only and are not intended to be used for window treatments or items of furniture. Bathroom and kitchen layouts are indicative only and are subject to change. Wardrobe size and position may vary. The total square footage given is an estimate only. In the event of your making an offer you should refer to the contract documentation for information and contractual provisions relating to net sales area. The information contained within this document does not constitute part of any offer, contract, or warranty. Whilst the plans have been prepared with all due care for the convenience of the intending purchaser, the information contained herein is a preliminary guide only.



GREEN SQUARE

FLOOR 3 EAST



G3.18 – 1 bedroom – 551 sq ft

Kitchen/Living/Dining
4.60m x 6.35m 15'1" x 20'9"
Bedroom
3.45m x 3.90m 11'3" x 12'9"

G3.19 – 1 bedroom – 548 sq ft

Kitchen/Living/Dining
6.25m x 3.95m 20'6" x 12'11"
Bedroom
3.00m x 4.00m 9'10" x 13'1"

G3.24 – 1 bedroom – 546 sq ft

Kitchen/Living/Dining
6.25m x 3.95m 20'6" x 12'11"
Bedroom
3.00m x 4.00m 9'10" x 13'1"

G3.25 – 1 bedroom – 547 sq ft

Kitchen/Living/Dining
4.60m x 6.35m 15'1" x 20'9"
Bedroom
3.45m x 3.90m 11'3" x 12'9"

G3.26 – 1 bedroom – 581 sq ft

Kitchen/Living/Dining
5.05m x 6.35m 16'6" x 20'9"
Bedroom
3.25m x 4.05m 10'7" x 13'3"

G3.20 – 2 bedroom – 762 sq ft

Kitchen/Living/Dining
4.10m x 6.35m 13'5" x 20'9"
Principal Bedroom
2.80m x 4.15m 9'2" x 13'7"
Bedroom 2
4.15m x 2.90m 13'7" x 9'6"

G3.21 – 2 bedroom – 757 sq ft

Kitchen/Living/Dining
4.05m x 6.15m 13'3" x 20'2"
Principal Bedroom
2.75m x 3.90m 9'0" x 12'9"
Bedroom 2
4.35m x 2.85m 14'3" x 9'4"

G3.22 – 2 bedroom – 756 sq ft

Kitchen/Living/Dining
4.15m x 6.25m 13'7" x 20'6"
Principal Bedroom
2.75m x 3.95m 9'0" x 12'11"
Bedroom 2
4.20m x 3.05m 13'9" x 10'0"

G3.23 – 2 bedroom – 756 sq ft

Kitchen/Living/Dining
4.10m x 6.35m 13'5" x 20'9"
Principal Bedroom
2.80m x 4.15m 9'2" x 13'7"
Bedroom 2
4.15m x 2.90m 13'7" x 9'6"

G2.7 – 3 bedroom duplex (upper)

See page 49 for details

G2.8 – 3 bedroom duplex (upper)

See page 48 for details

G4.7 – 3 bedroom duplex (upper)

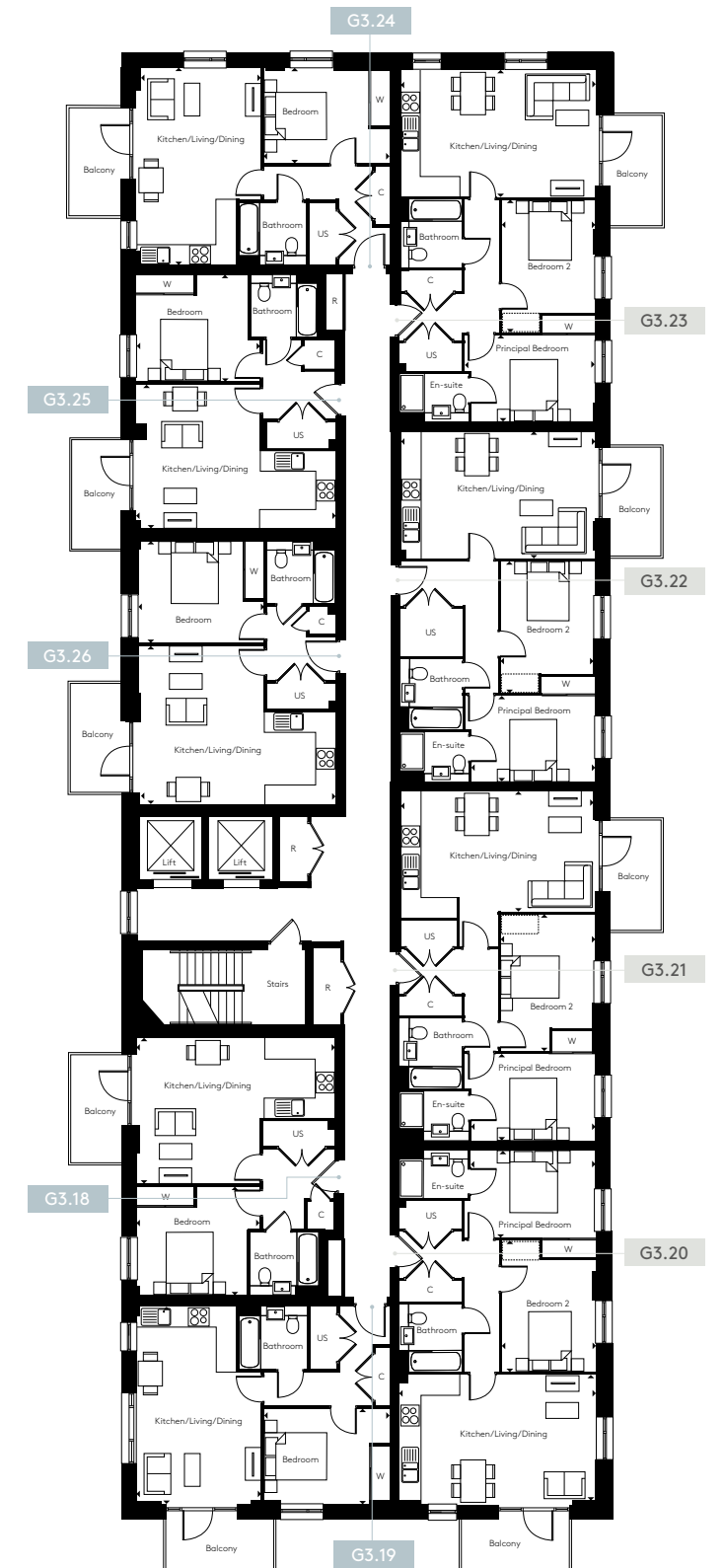
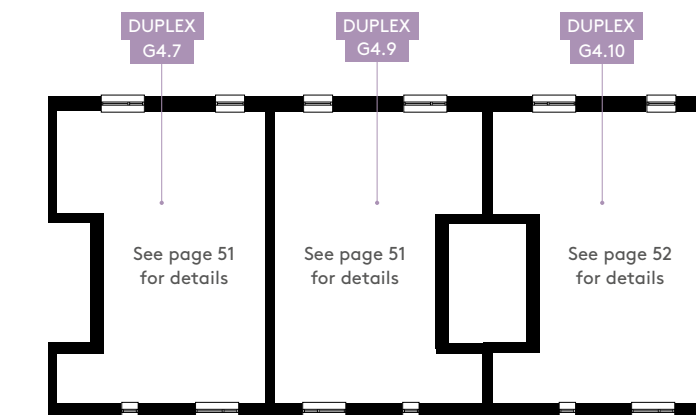
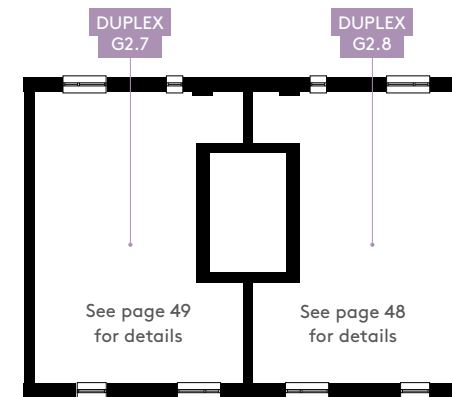
See page 51 for details

G4.9 – 3 bedroom duplex (upper)

See page 51 for details

G4.10 – 3 bedroom duplex (upper)

See page 52 for details



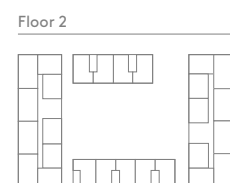
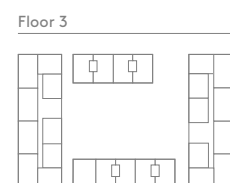
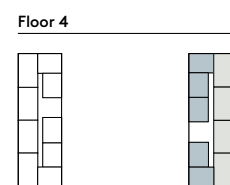
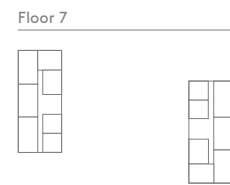
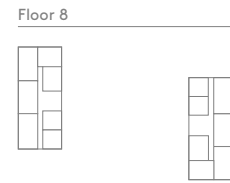
1 bedroom apartment 2 bedroom apartment 3 bedroom duplex

C = Cupboard W = Wardrobe R = Riser US = Utility Store = Indicative Wardrobe Position

All floorplans are not to scale. Layouts provide approximate measurements only and are subject to planning. Dimensions, which are taken from the indicated points of measurement, are for guidance only and are not intended to be used for window treatments or items of furniture. Bathroom and kitchen layouts are indicative only and are subject to change. Wardrobe size and position may vary. The total square footage given is an estimate only. In the event of your making an offer you should refer to the contract documentation for information and contractual provisions relating to net sales area. The information contained within this document does not constitute part of any offer, contract, or warranty. Whilst the plans have been prepared with all due care for the convenience of the intending purchaser, the information contained herein is a preliminary guide only.

GREEN SQUARE

FLOOR 4 EAST



G3.27 – 1 bedroom – 551 sq ft

Kitchen/Living/Dining
4.60m x 6.35m 15'1" x 20'9"
Bedroom
3.45m x 3.90m 11'3" x 12'9"

G3.28 – 1 bedroom – 548 sq ft

Kitchen/Living/Dining
6.25m x 3.95m 20'6" x 12'11"
Bedroom
3.00m x 4.00m 9'10" x 13'1"

G3.33 – 1 bedroom – 546 sq ft

Kitchen/Living/Dining
6.25m x 3.95m 20'6" x 12'11"
Bedroom
3.00m x 4.00m 9'10" x 13'1"

G3.34 – 1 bedroom – 547 sq ft

Kitchen/Living/Dining
4.60m x 6.35m 15'1" x 20'9"
Bedroom
3.45m x 3.90m 11'3" x 12'9"

G3.35 – 1 bedroom – 581 sq ft

Kitchen/Living/Dining
5.05m x 6.35m 16'6" x 20'9"
Bedroom
3.25m x 4.05m 10'7" x 13'3"

G3.29 – 2 bedroom – 762 sq ft

Kitchen/Living/Dining
4.10m x 6.35m 13'5" x 20'9"
Principal Bedroom
2.80m x 4.15m 9'2" x 13'7"
Bedroom 2
4.15m x 2.90m 13'7" x 9'6"

G3.30 – 2 bedroom – 757 sq ft

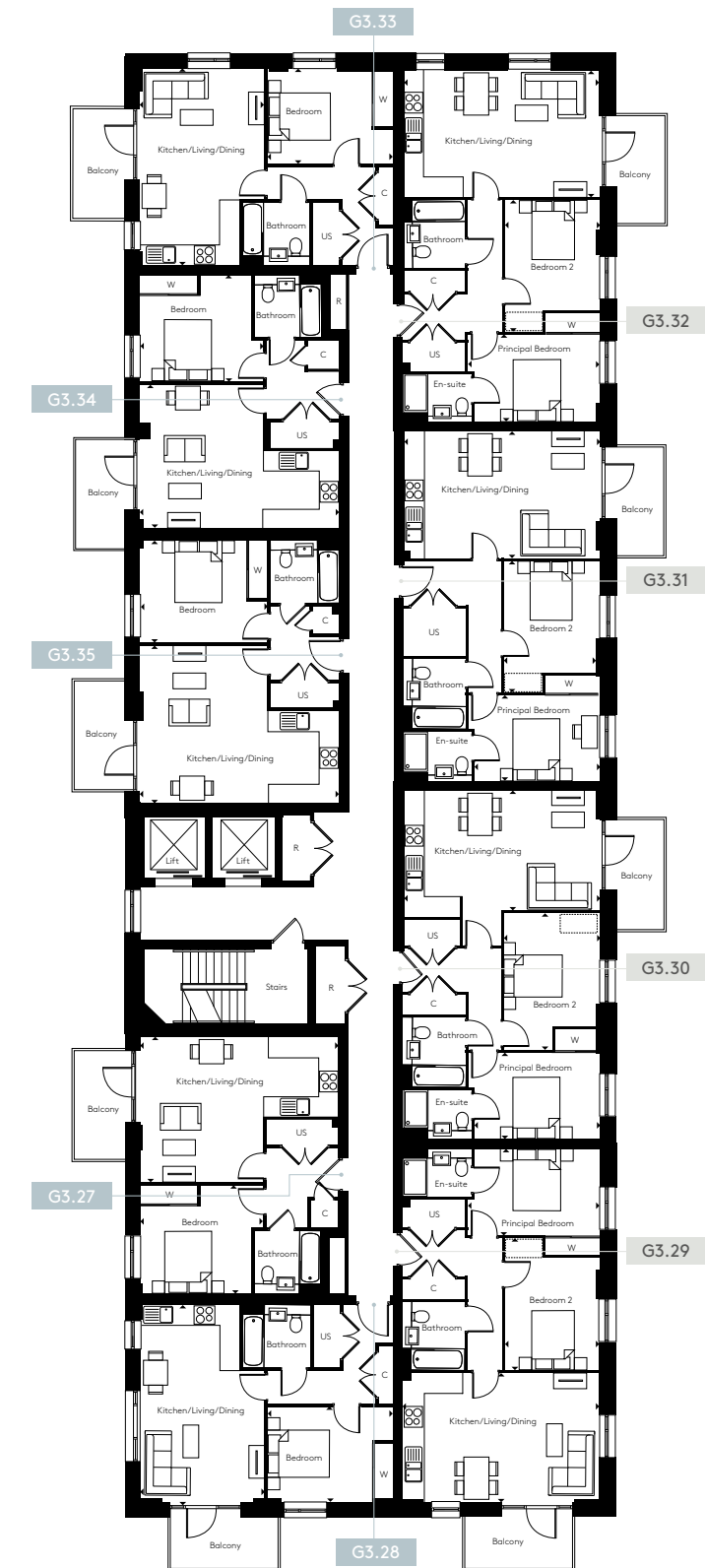
Kitchen/Living/Dining
4.05m x 6.15m 13'3" x 20'2"
Principal Bedroom
2.75m x 3.90m 9'0" x 12'9"
Bedroom 2
4.35m x 2.85m 14'3" x 9'4"

G3.31 – 2 bedroom – 756 sq ft

Kitchen/Living/Dining
4.15m x 6.25m 13'7" x 20'6"
Principal Bedroom
2.75m x 3.95m 9'0" x 12'11"
Bedroom 2
4.20m x 3.05m 13'9" x 10'0"

G3.32 – 2 bedroom – 756 sq ft

Kitchen/Living/Dining
4.10m x 6.35m 13'5" x 20'9"
Principal Bedroom
2.80m x 4.15m 9'2" x 13'7"
Bedroom 2
4.15m x 2.90m 13'7" x 9'6"



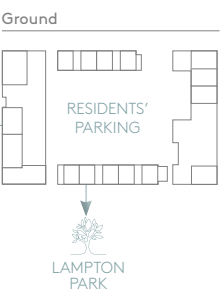
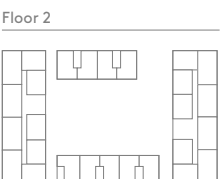
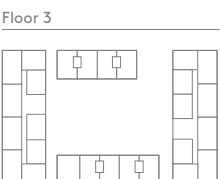
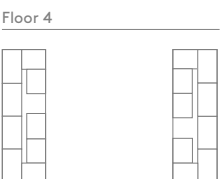
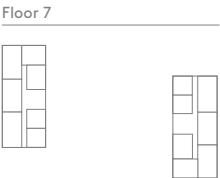
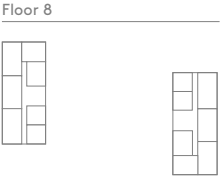
1 bedroom apartment 2 bedroom apartment

C = Cupboard W = Wardrobe R = Riser US = Utility Store = Indicative Wardrobe Position

All floorplans are not to scale. Layouts provide approximate measurements only and are subject to planning. Dimensions, which are taken from the indicated points of measurement, are for guidance only and are not intended to be used for window treatments or items of furniture. Bathroom and kitchen layouts are indicative only and are subject to change. Wardrobe size and position may vary. The total square footage given is an estimate only. In the event of your making an offer you should refer to the contract documentation for information and contractual provisions relating to net sales area. The information contained within this document does not constitute part of any offer, contract, or warranty. Whilst the plans have been prepared with all due care for the convenience of the intending purchaser, the information contained herein is a preliminary guide only.

GREEN SQUARE

FLOOR 5 EAST



G3.41 – studio – 431 sq ft

| | |
|---------------|---------------|
| Living Area | |
| 3.50m x 3.15m | 11'5" x 10'4" |
| Kitchen | |
| 2.65m x 2.20m | 8'8" x 7'2" |
| Sleeping Area | |
| 3.45m x 2.60m | 11'3" x 8'6" |

G3.42 – studio – 437 sq ft

| | |
|---------------|---------------|
| Living Area | |
| 3.45m x 6.35m | 11'3" x 20'9" |
| Sleeping Area | |
| 3.40m x 2.75m | 11'1" x 9'0" |

G3.36 – 1 bedroom – 551 sq ft

| | |
|-----------------------|---------------|
| Kitchen/Living/Dining | |
| 4.60m x 6.35m | 15'1" x 20'9" |
| Bedroom | |
| 3.45m x 3.90m | 11'3" x 12'9" |

G3.37 – 1 bedroom – 548 sq ft

| | |
|-----------------------|----------------|
| Kitchen/Living/Dining | |
| 6.25m x 3.95m | 20'6" x 12'11" |
| Bedroom | |
| 3.00m x 4.00m | 9'10" x 13'1" |

G3.38 – 2 bedroom – 762 sq ft

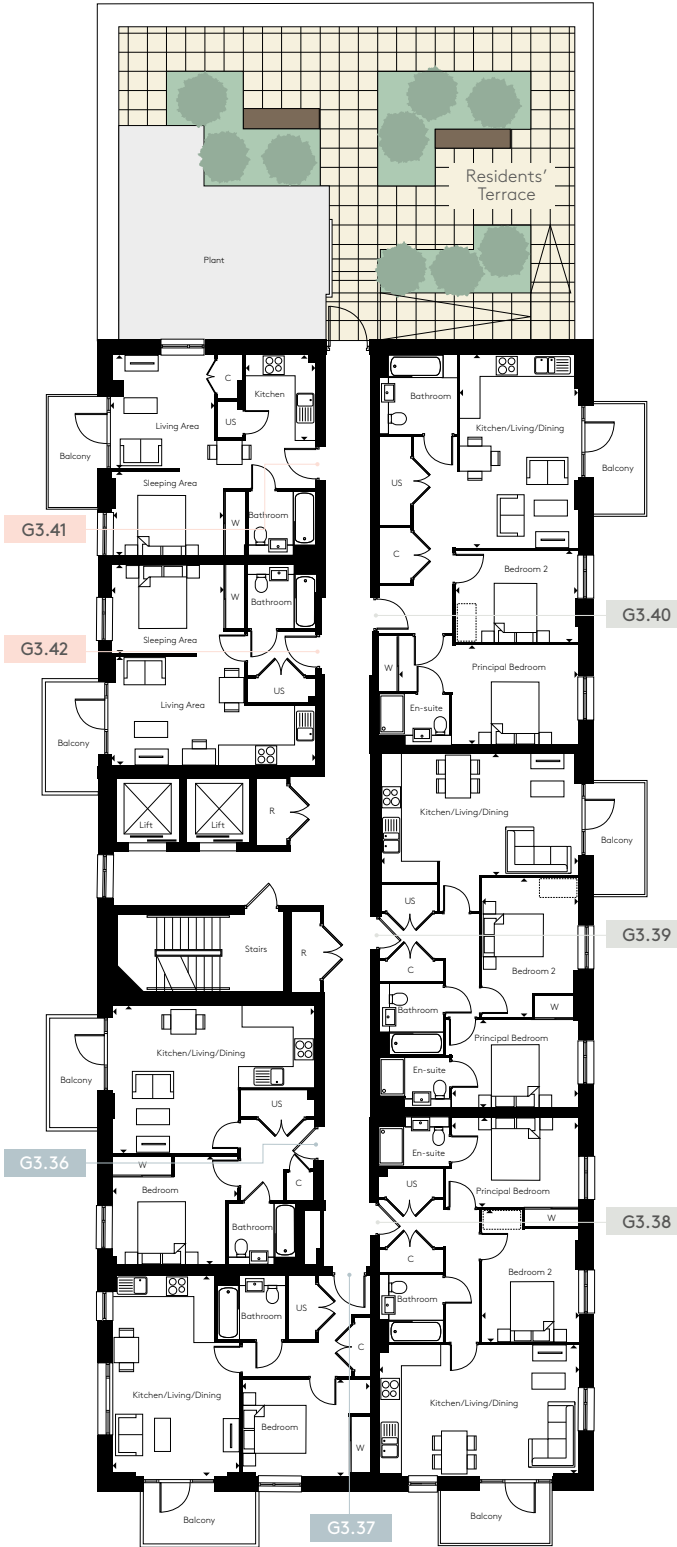
| | |
|-----------------------|---------------|
| Kitchen/Living/Dining | |
| 4.10m x 6.35m | 13'5" x 20'9" |
| Principal Bedroom | |
| 2.80m x 4.15m | 9'2" x 13'7" |
| Bedroom 2 | |
| 4.15m x 2.90m | 13'7" x 9'6" |

G3.39 – 2 bedroom – 757 sq ft

| | |
|-----------------------|---------------|
| Kitchen/Living/Dining | |
| 4.05m x 6.15m | 13'3" x 20'2" |
| Principal Bedroom | |
| 2.75m x 3.90m | 9'0" x 12'9" |
| Bedroom 2 | |
| 4.35m x 2.85m | 14'3" x 9'4" |

G3.40 – 2 bedroom – 822 sq ft

| | |
|-----------------------|----------------|
| Kitchen/Living/Dining | |
| 6.05m x 3.70m | 19'10" x 12'1" |
| Principal Bedroom | |
| 3.05m x 5.60m | 10'0" x 18'4" |
| Bedroom 2 | |
| 2.85m x 3.80m | 9'4" x 12'5" |



Studio apartment 1 bedroom apartment 2 bedroom apartment

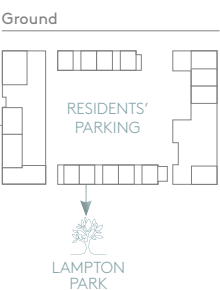
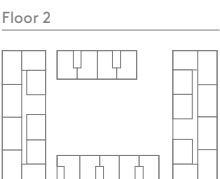
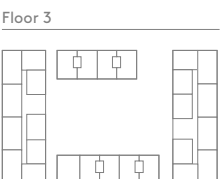
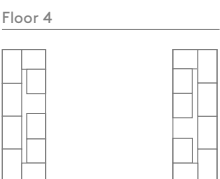
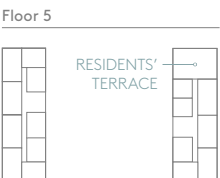
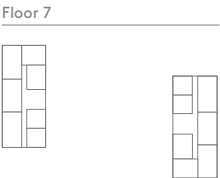
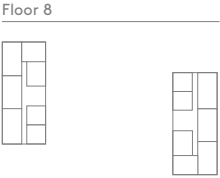
C = Cupboard W = Wardrobe R = Riser US = Utility Store = Indicative Wardrobe Position

All floorplans are not to scale. Layouts provide approximate measurements only and are subject to planning. Dimensions, which are taken from the indicated points of measurement, are for guidance only and are not intended to be used for window treatments or items of furniture. Bathroom and kitchen layouts are indicative only and are subject to change. Wardrobe size and position may vary. The total square footage given is an estimate only. In the event of your making an offer you should refer to the contract documentation for information and contractual provisions relating to net sales area. The information contained within this document does not constitute part of any offer, contract, or warranty. Whilst the plans have been prepared with all due care for the convenience of the intending purchaser, the information contained herein is a preliminary guide only.



GREEN SQUARE

FLOOR 6 EAST



G3.49 – studio – 437 sq ft

Living Area
3.45m x 6.35m 11'3" x 20'9"
Sleeping Area
4.10m x 2.75m 13'5" x 9'0"

G3.43 – 1 bedroom – 551 sq ft

Kitchen/Living/Dining
4.60m x 6.35m 15'1" x 20'9"
Bedroom
3.45m x 3.90m 11'3" x 12'9"

G3.44 – 1 bedroom – 548 sq ft

Kitchen/Living/Dining
6.25m x 3.95m 20'6" x 12'11"
Bedroom
3.00m x 4.00m 9'10" x 13'1"

G3.48 – 1 bedroom – 545 sq ft

Kitchen/Living/Dining
6.25m x 3.90m 20'6" x 12'9"
Bedroom
3.00m x 4.05m 9'10" x 13'3"

G3.45 – 2 bedroom – 762 sq ft

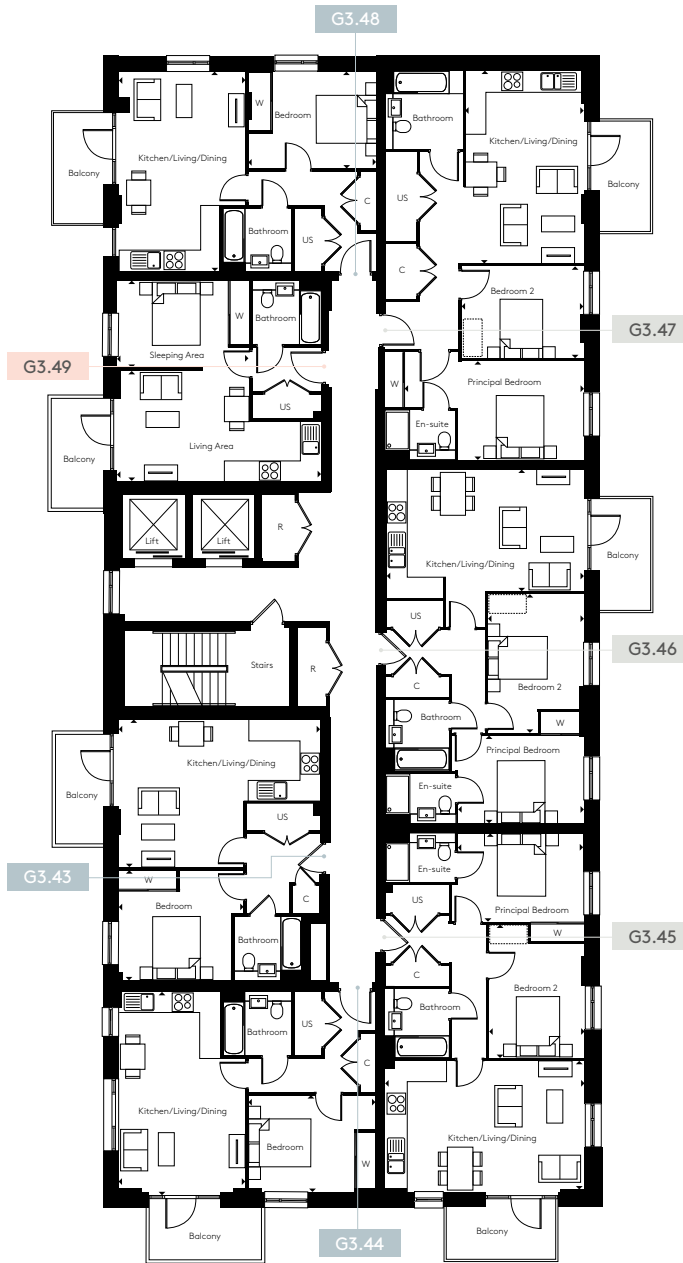
Kitchen/Living/Dining
4.10m x 6.35m 13'5" x 20'9"
Principal Bedroom
2.80m x 4.15m 9'2" x 13'7"
Bedroom 2
4.15m x 2.90m 13'7" x 9'6"

G3.46 – 2 bedroom – 757 sq ft

Kitchen/Living/Dining
4.05m x 6.15m 13'3" x 20'2"
Principal Bedroom
2.75m x 3.90m 9'0" x 12'9"
Bedroom 2
4.35m x 2.85m 14'3" x 9'4"

G3.47 – 2 bedroom – 822 sq ft

Kitchen/Living/Dining
6.05m x 3.70m 19'10" x 12'1"
Principal Bedroom
3.05m x 5.60m 10'0" x 18'4"
Bedroom 2
2.85m x 3.80m 9'4" x 12'5"

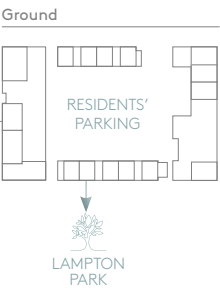
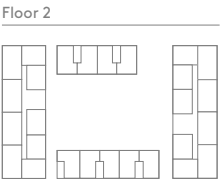
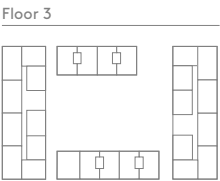
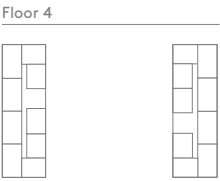
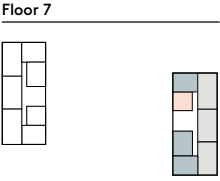
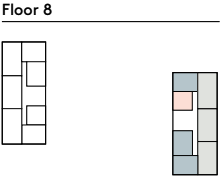


Studio apartment 1 bedroom apartment 2 bedroom apartment

C = Cupboard W = Wardrobe R = Riser US = Utility Store = Indicative Wardrobe Position

All floorplans are not to scale. Layouts provide approximate measurements only and are subject to planning. Dimensions, which are taken from the indicated points of measurement, are for guidance only and are not intended to be used for window treatments or items of furniture. Bathroom and kitchen layouts are indicative only and are subject to change. Wardrobe size and position may vary. The total square footage given is an estimate only. In the event of your making an offer you should refer to the contract documentation for information and contractual provisions relating to net sales area. The information contained within this document does not constitute part of any offer, contract, or warranty. Whilst the plans have been prepared with all due care for the convenience of the intending purchaser, the information contained herein is a preliminary guide only.





GREEN SQUARE

FLOORS 7 AND 8 EAST

G3.56, G3.63 – studio – 437 sq ft

| | |
|---------------|---------------|
| Living Area | |
| 3.45m x 6.35m | 11'3" x 20'9" |
| Sleeping Area | |
| 4.10m x 2.75m | 13'5" x 9'0" |

G3.50, G3.57 – 1 bedroom – 551 sq ft

| | |
|-----------------------|---------------|
| Kitchen/Living/Dining | |
| 4.60m x 6.35m | 15'1" x 20'9" |
| Bedroom | |
| 3.45m x 3.90m | 11'3" x 12'9" |

G3.51, G3.58 – 1 bedroom – 548 sq ft

| | |
|-----------------------|----------------|
| Kitchen/Living/Dining | |
| 6.25m x 3.95m | 20'6" x 12'11" |
| Bedroom | |
| 3.00m x 4.00m | 9'10" x 13'1" |

G3.55, G3.62 – 1 bedroom – 545 sq ft

| | |
|-----------------------|---------------|
| Kitchen/Living/Dining | |
| 6.25m x 3.90m | 20'6" x 12'9" |
| Bedroom | |
| 3.00m x 4.05m | 9'10" x 13'3" |

G3.52, G3.59 – 2 bedroom – 762 sq ft

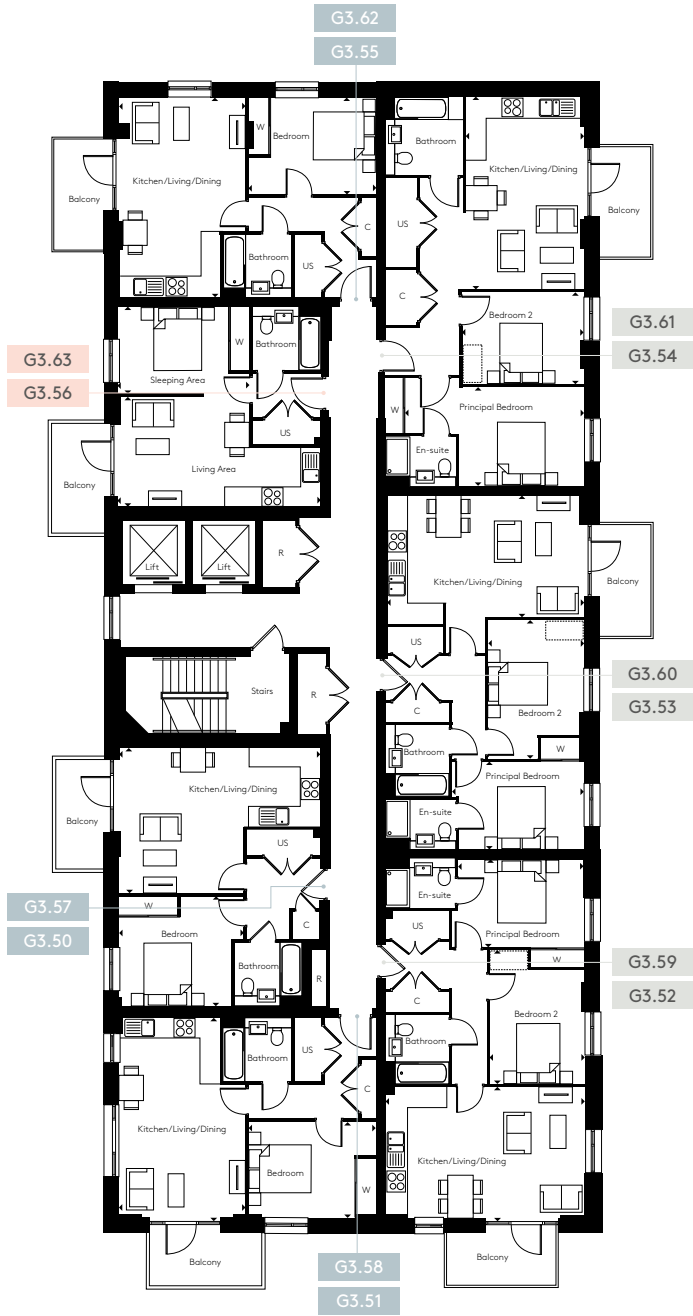
| | |
|-----------------------|---------------|
| Kitchen/Living/Dining | |
| 4.10m x 6.35m | 13'5" x 20'9" |
| Principal Bedroom | |
| 2.80m x 4.15m | 9'2" x 13'7" |
| Bedroom 2 | |
| 4.15m x 2.90m | 13'7" x 9'6" |

G3.53, G3.60 – 2 bedroom – 757 sq ft

| | |
|-----------------------|---------------|
| Kitchen/Living/Dining | |
| 4.05m x 6.15m | 13'3" x 20'2" |
| Principal Bedroom | |
| 2.75m x 3.90m | 9'0" x 12'9" |
| Bedroom 2 | |
| 4.35m x 2.85m | 14'3" x 9'4" |

G3.54, G3.61 – 2 bedroom – 822 sq ft

| | |
|-----------------------|----------------|
| Kitchen/Living/Dining | |
| 6.05m x 3.70m | 19'10" x 12'1" |
| Principal Bedroom | |
| 3.05m x 5.60m | 10'0" x 18'4" |
| Bedroom 2 | |
| 2.85m x 3.80m | 9'4" x 12'5" |



Studio apartment 1 bedroom apartment 2 bedroom apartment

C = Cupboard W = Wardrobe R = Riser US = Utility Store = Indicative Wardrobe Position

All floorplans are not to scale. Layouts provide approximate measurements only and are subject to planning. Dimensions, which are taken from the indicated points of measurement, are for guidance only and are not intended to be used for window treatments or items of furniture. Bathroom and kitchen layouts are indicative only and are subject to change. Wardrobe size and position may vary. The total square footage given is an estimate only. In the event of your making an offer you should refer to the contract documentation for information and contractual provisions relating to net sales area. The information contained within this document does not constitute part of any offer, contract, or warranty. Whilst the plans have been prepared with all due care for the convenience of the intending purchaser, the information contained herein is a preliminary guide only.



GREEN SQUARE

DUPLEX APARTMENTS

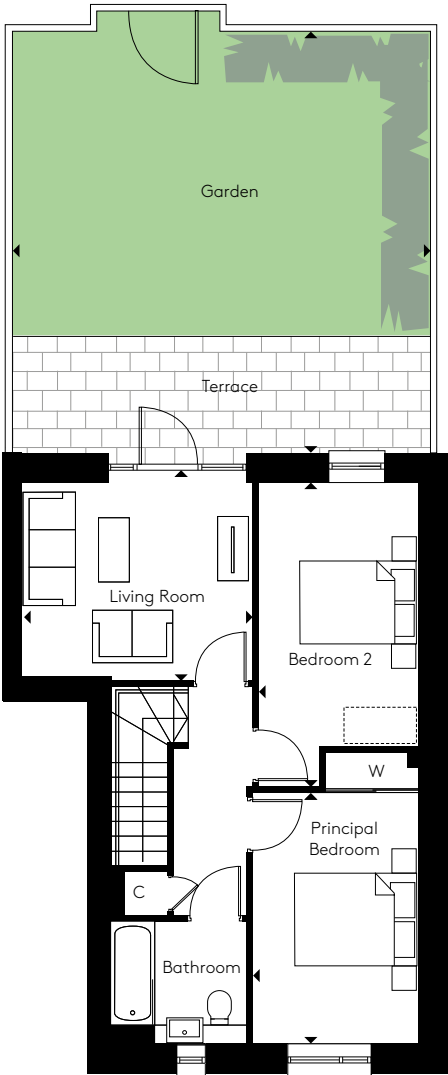
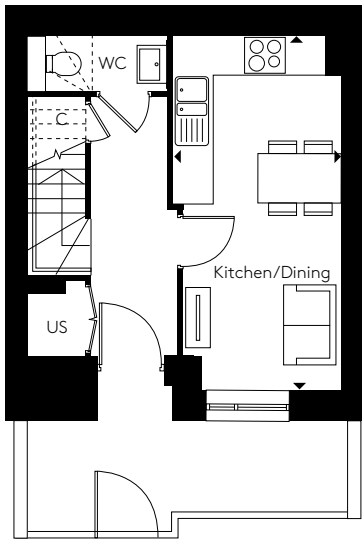


GREEN SQUARE

DUPLEX TYPE 1

- G2.1 Podium Garden
6.00m x 7.10m 19'8" x 23'3"
- G2.2 Podium Garden
6.00m x 6.80m 19'8" x 22'3"
- G2.3 Podium Garden
6.00m x 6.80m 19'8" x 22'3"
- G2.4 Podium Garden
6.00m x 8.40m 19'8" x 27'6"
- G4.2 Podium Garden
6.70m x 6.80m 21'11" x 22'3"
- G4.3 Podium Garden
6.70m x 6.80m 21'11" x 22'3"
- G4.4 Podium Garden
6.70m x 6.85m 21'11" x 22'5"
- G4.5 Podium Garden
6.75m x 7.10m 22'1" x 22'1"

Ground

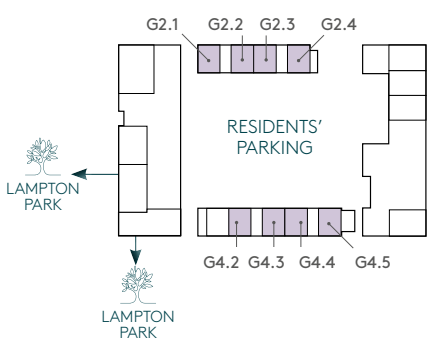


Floor 1

- G2.1*, G2.4*, G4.5
2 bedroom – 854 sq ft
- G2.2*, G2.3†, G4.2*, G4.3, G4.4†
2 bedroom – 857 sq ft

- Kitchen/Dining
5.80m x 2.70m 19'0" x 8'10"
- Living Room
3.20m x 3.65m 10'5" x 11'11"
- Principal Bedroom
4.05m x 2.75m 13'3" x 9'0"
- Bedroom 2
4.90m x 2.75m 16'0" x 9'0"

Ground



Floor 1



C = Cupboard W = Wardrobe R = Riser US = Utility Store [] = Indicative Wardrobe Position

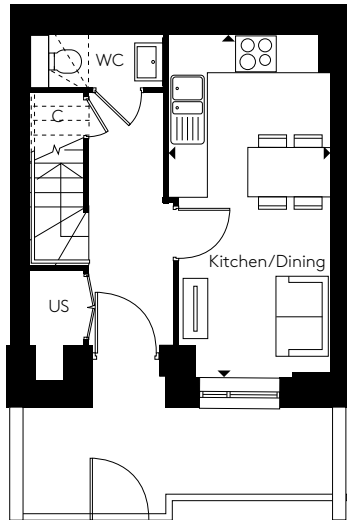
*Handed † Gardens differ slightly ^ South-facing garden

GREEN SQUARE

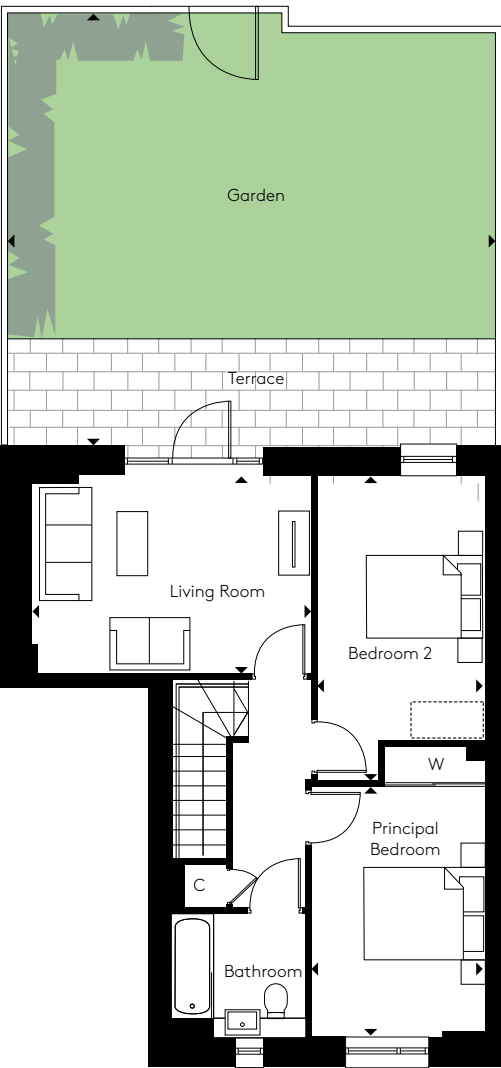
DUPLEX TYPE 2

- Podium Garden
7.10m x 7.80m 23'3" x 25'7"

Ground



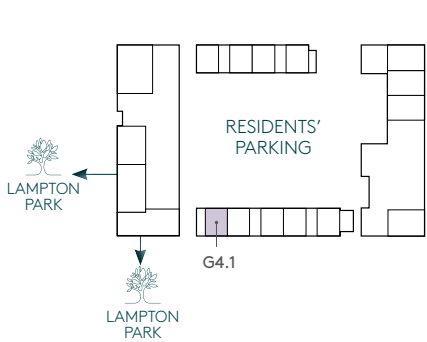
Floor 1



- G4.1 – 2 bedroom – 882 sq ft

- Kitchen/Dining
5.70m x 2.55m 18'8" x 8'4"
- Living Room
3.25m x 4.45m 10'7" x 14'7"
- Principal Bedroom
3.95m x 2.75m 12'11" x 9'0"
- Bedroom 2
4.90m x 2.75m 16'0" x 9'0"

Ground



Floor 1

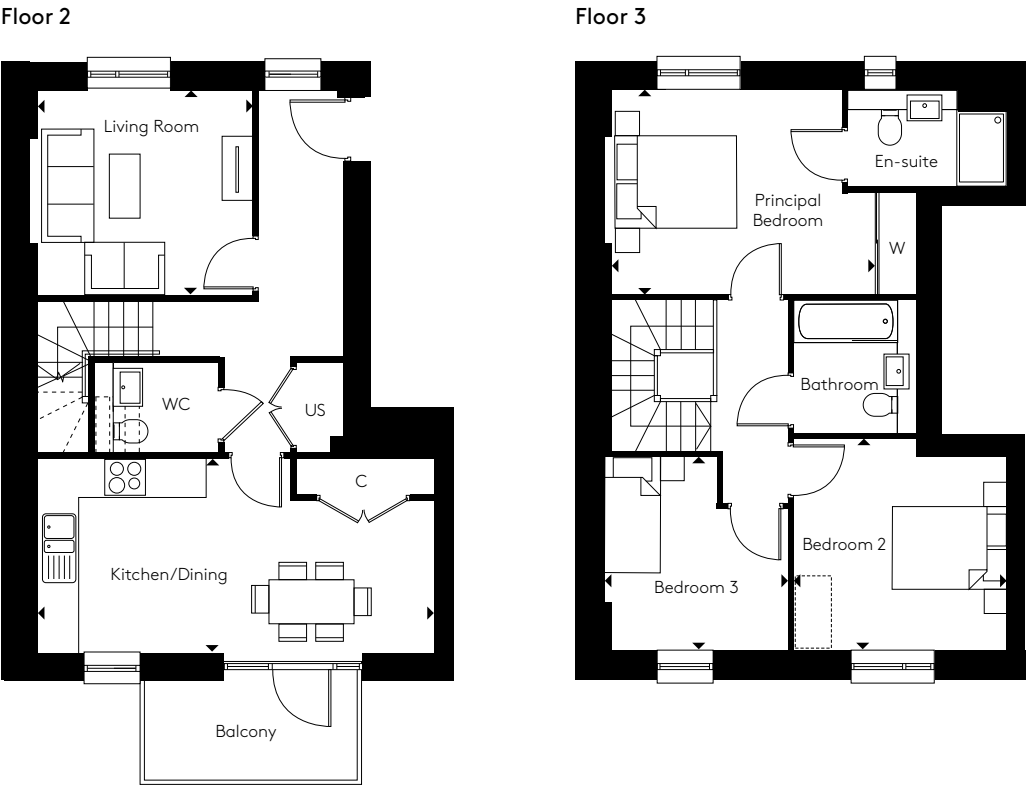


C = Cupboard W = Wardrobe R = Riser US = Utility Store [] = Indicative Wardrobe Position

All floorplans are not to scale. Layouts provide approximate measurements only and are subject to planning. Dimensions, which are taken from the indicated points of measurement, are for guidance only and are not intended to be used for window treatments or items of furniture. Bathroom and kitchen layouts are indicative only and are subject to change. Wardrobe size and position may vary. The total square footage given is an estimate only. In the event of your making an offer you should refer to the contract documentation for information and contractual provisions relating to net sales area. The information contained within this document does not constitute part of any offer, contract, or warranty. Whilst the plans have been prepared with all due care for the convenience of the intending purchaser, the information contained herein is a preliminary guide only.

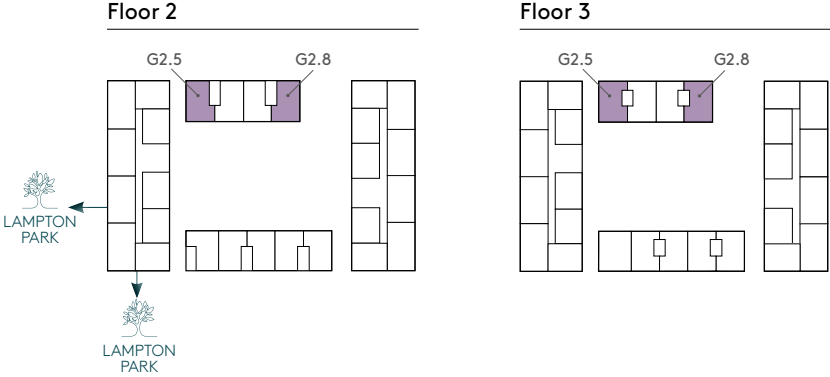
GREEN SQUARE

DUPLEX TYPE 3



G2.5, G2.8* – 3 bedroom – 1,130 sq ft

| | | |
|-------------------|---------------|----------------|
| Kitchen/Dining | 3.15m x 6.60m | 10'3" x 21'7" |
| Living Room | 3.35m x 3.55m | 10'11" x 11'7" |
| Principal Bedroom | 3.30m x 4.30m | 10'9" x 14'1" |
| Bedroom 2 | 3.45m x 3.40m | 11'3" x 11'1" |
| Bedroom 3 | 3.15m x 2.95m | 10'3" x 9'8" |



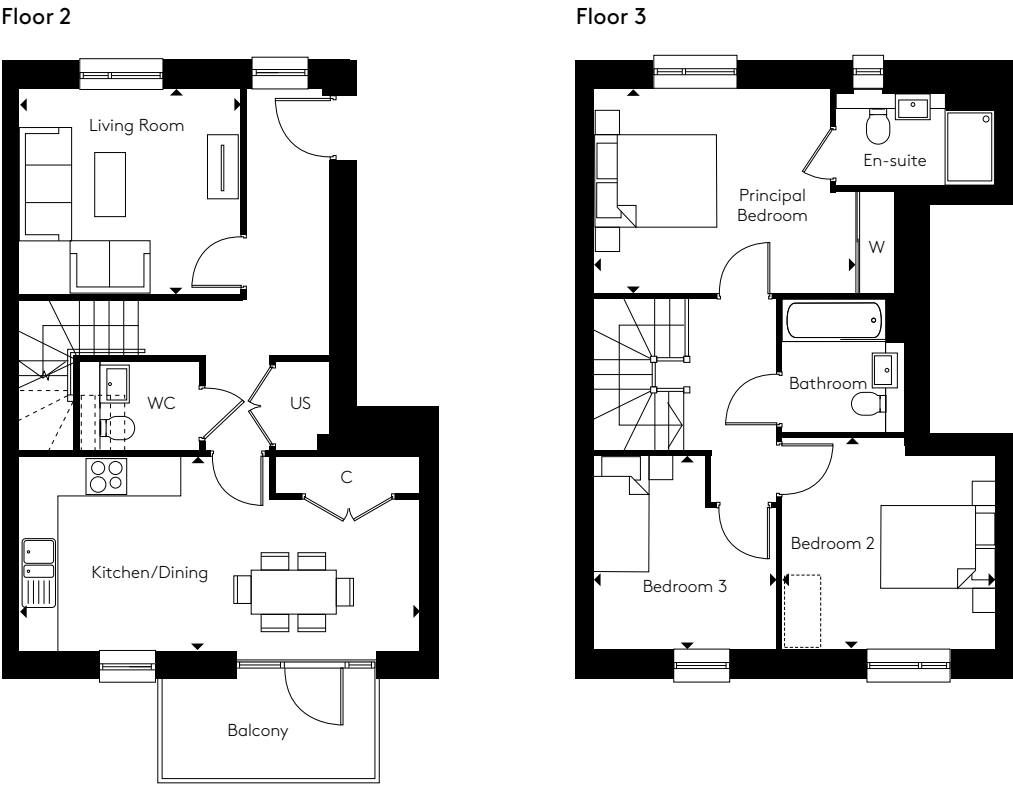
C = Cupboard W = Wardrobe R = Riser US = Utility Store [] = Indicative Wardrobe Position

*Handed

All floorplans are not to scale. Layouts provide approximate measurements only and are subject to planning. Dimensions, which are taken from the indicated points of measurement, are for guidance only and are not intended to be used for window treatments or items of furniture. Bathroom and kitchen layouts are indicative only and are subject to change. Wardrobe size and position may vary. The total square footage given is an estimate only. In the event of your making an offer you should refer to the contract documentation for information and contractual provisions relating to net sales area. The information contained within this document does not constitute part of any offer, contract, or warranty. Whilst the plans have been prepared with all due care for the convenience of the intending purchaser, the information contained herein is a preliminary guide only.

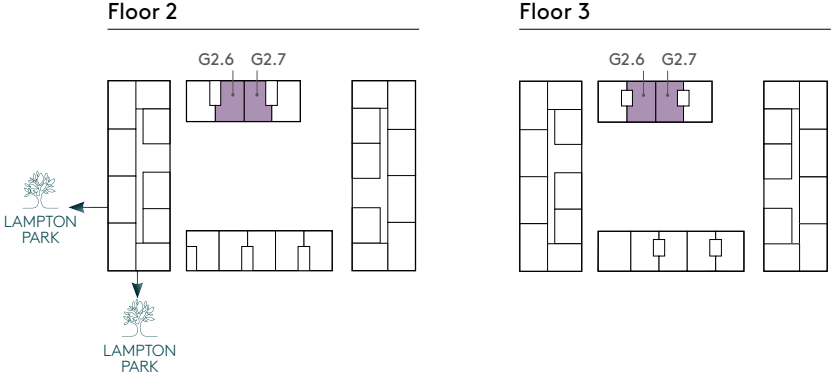
GREEN SQUARE

DUPLEX TYPE 4



G2.6*, G2.7 – 3 bedroom – 1,133 sq ft

| | | |
|-------------------|---------------|----------------|
| Kitchen/Dining | 3.15m x 6.60m | 10'3" x 21'7" |
| Living Room | 3.35m x 3.55m | 10'11" x 11'7" |
| Principal Bedroom | 3.30m x 4.30m | 10'9" x 14'1" |
| Bedroom 2 | 3.45m x 3.40m | 11'3" x 11'1" |
| Bedroom 3 | 3.15m x 2.95m | 10'3" x 9'8" |



C = Cupboard W = Wardrobe R = Riser US = Utility Store [] = Indicative Wardrobe Position

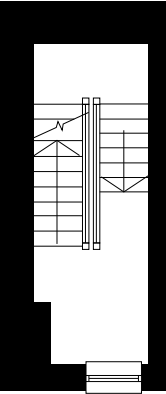
*Handed

All floorplans are not to scale. Layouts provide approximate measurements only and are subject to planning. Dimensions, which are taken from the indicated points of measurement, are for guidance only and are not intended to be used for window treatments or items of furniture. Bathroom and kitchen layouts are indicative only and are subject to change. Wardrobe size and position may vary. The total square footage given is an estimate only. In the event of your making an offer you should refer to the contract documentation for information and contractual provisions relating to net sales area. The information contained within this document does not constitute part of any offer, contract, or warranty. Whilst the plans have been prepared with all due care for the convenience of the intending purchaser, the information contained herein is a preliminary guide only.

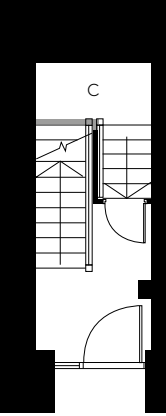
GREEN SQUARE

DUPLEX TYPE 5

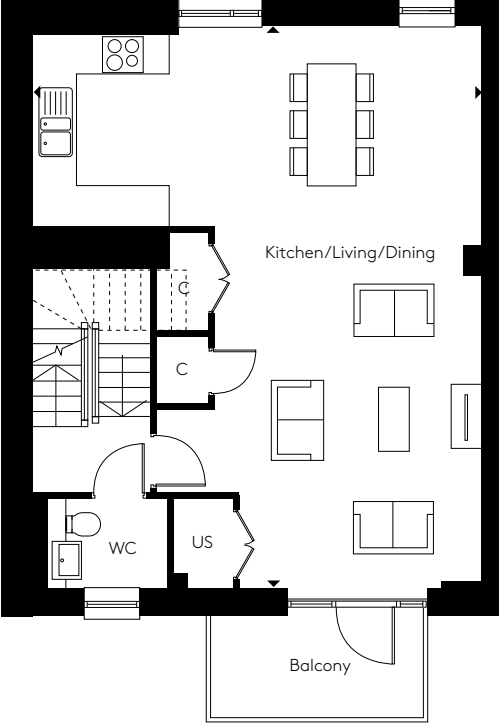
Floor 1



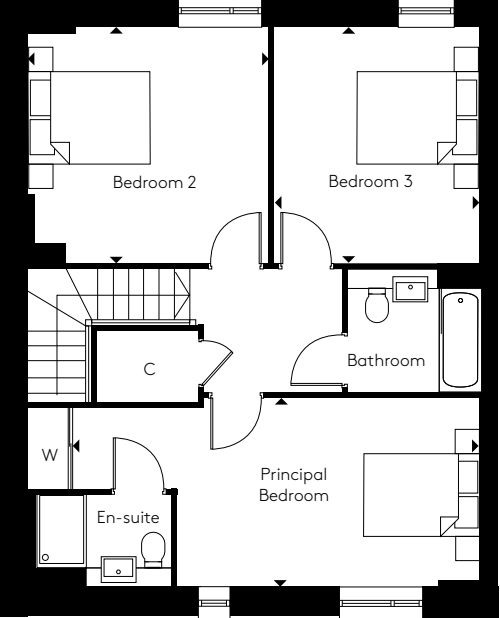
Ground Floor



Floor 2



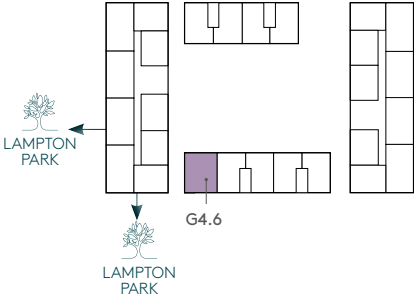
Floor 3



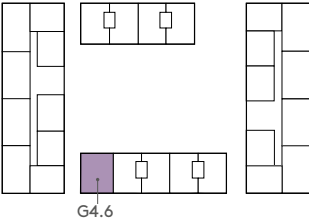
G4.6 – 3 bedroom – 1,614 sq ft

| | | |
|-----------------------|---------------|----------------|
| Kitchen/Living/Dining | 9.00m x 7.20m | 29'6" x 23'7" |
| Principal Bedroom | 3.05m x 7.30m | 10'0" x 23'11" |
| Bedroom 2 | 3.85m x 3.80m | 12'5" x 12'5" |
| Bedroom 3 | 3.85m x 3.35m | 12'7" x 10'11" |

Floor 2



Floor 3



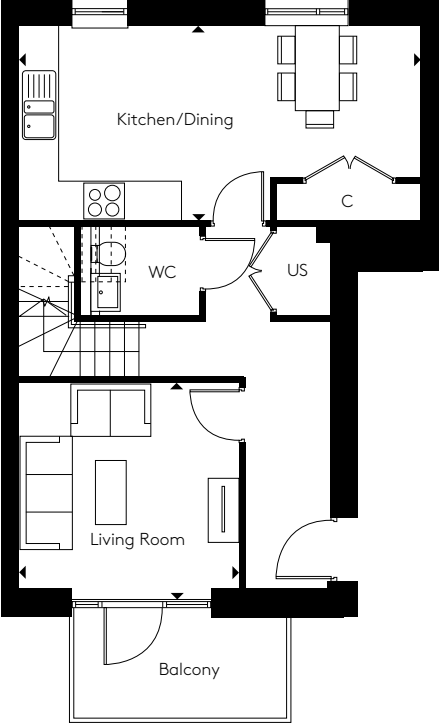
C = Cupboard W = Wardrobe R = Riser US = Utility Store [dashed box] = Indicative Wardrobe Position



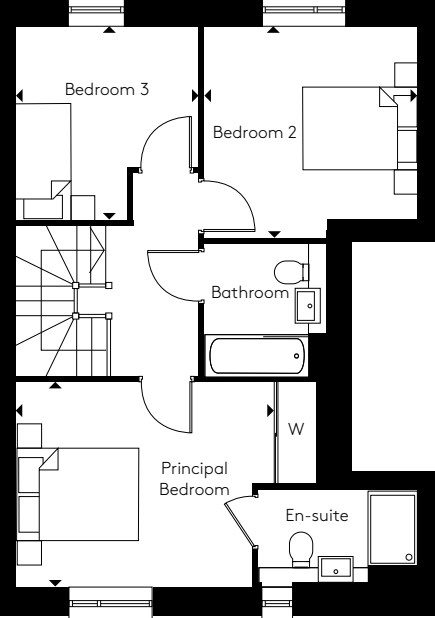
GREEN SQUARE

DUPLEX TYPE 6

Floor 2



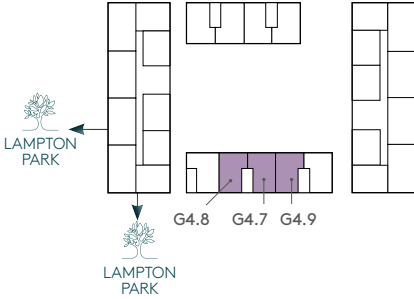
Floor 3



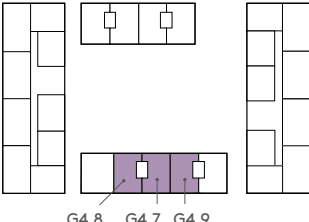
G4.7*, G4.8, G4.9 – 3 bedroom – 1,128 sq ft

| | | |
|-------------------|---------------|----------------|
| Kitchen/Dining | 3.15m x 6.60m | 10'3" x 21'7" |
| Living Room | 3.35m x 3.55m | 10'11" x 11'7" |
| Principal Bedroom | 3.30m x 4.30m | 10'9" x 14'1" |
| Bedroom 2 | 3.45m x 3.40m | 11'3" x 11'1" |
| Bedroom 3 | 3.15m x 2.95m | 10'3" x 9'8" |

Floor 2



Floor 3



C = Cupboard W = Wardrobe R = Riser US = Utility Store [dashed box] = Indicative Wardrobe Position



*Handed

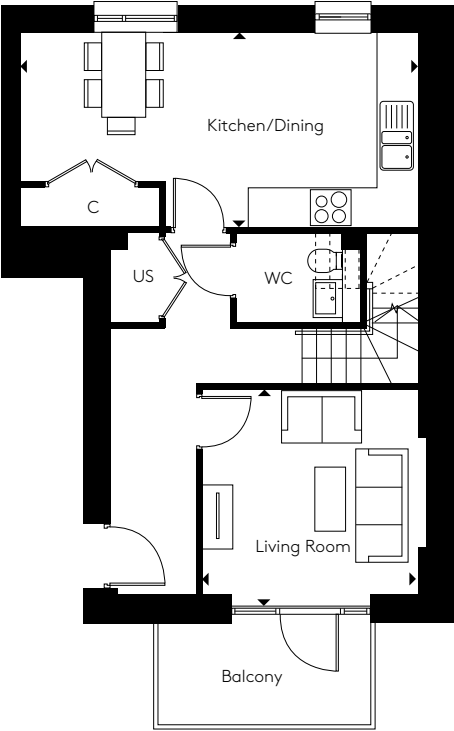
All floorplans are not to scale. Layouts provide approximate measurements only and are subject to planning. Dimensions, which are taken from the indicated points of measurement, are for guidance only and are not intended to be used for window treatments or items of furniture. Bathroom and kitchen layouts are indicative only and are subject to change. Wardrobe size and position may vary. The total square footage given is an estimate only. In the event of your making an offer you should refer to the contract documentation for information and contractual provisions relating to net sales area. The information contained within this document does not constitute part of any offer, contract, or warranty. Whilst the plans have been prepared with all due care for the convenience of the intending purchaser, the information contained herein is a preliminary guide only.

All floorplans are not to scale. Layouts provide approximate measurements only and are subject to planning. Dimensions, which are taken from the indicated points of measurement, are for guidance only and are not intended to be used for window treatments or items of furniture. Bathroom and kitchen layouts are indicative only and are subject to change. Wardrobe size and position may vary. The total square footage given is an estimate only. In the event of your making an offer you should refer to the contract documentation for information and contractual provisions relating to net sales area. The information contained within this document does not constitute part of any offer, contract, or warranty. Whilst the plans have been prepared with all due care for the convenience of the intending purchaser, the information contained herein is a preliminary guide only.

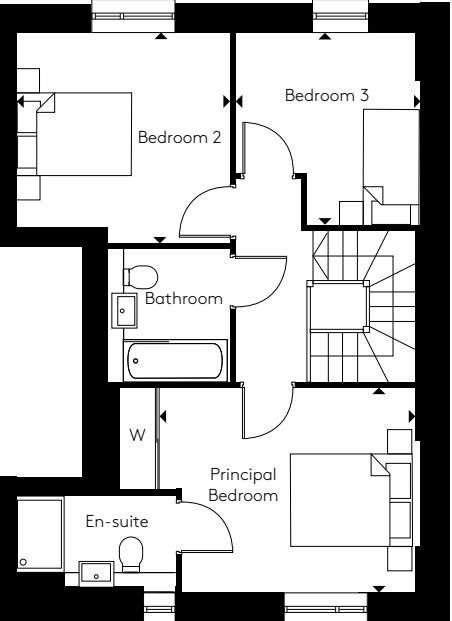
GREEN SQUARE

DUPLEX TYPE 7

Floor 2



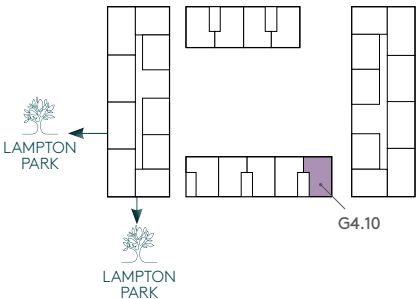
Floor 3



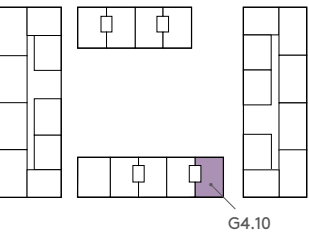
G4.10 – 3 bedroom – 1,125 sq ft

| | | |
|-------------------|---------------|----------------|
| Kitchen/Dining | 3.15m x 6.60m | 10'3" x 21'7" |
| Living Room | 3.35m x 3.55m | 10'11" x 11'7" |
| Principal Bedroom | 3.30m x 4.30m | 10'9" x 14'1" |
| Bedroom 2 | 3.45m x 3.40m | 11'3" x 11'1" |
| Bedroom 3 | 3.15m x 2.95m | 10'3" x 9'8" |

Floor 2



Floor 3

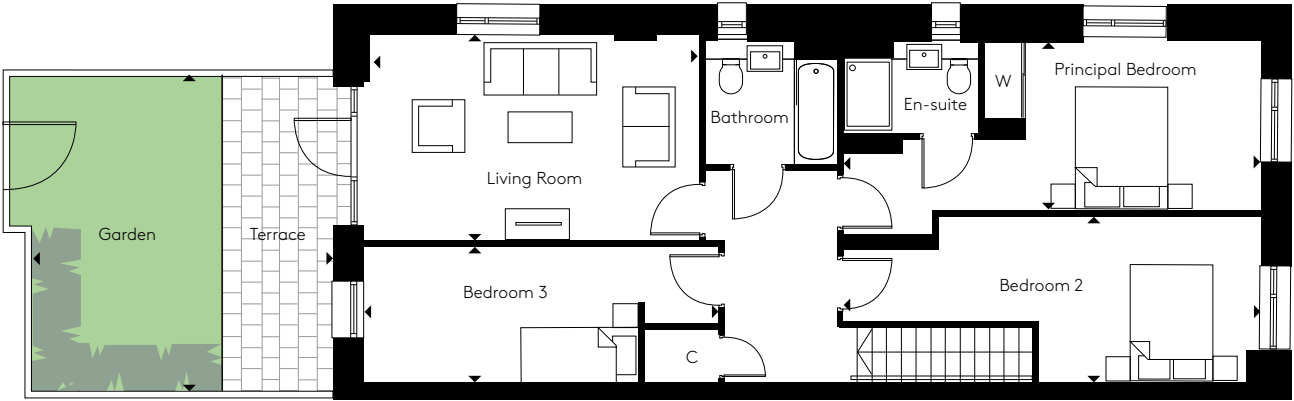


C = Cupboard W = Wardrobe R = Riser US = Utility Store [dashed box] = Indicative Wardrobe Position



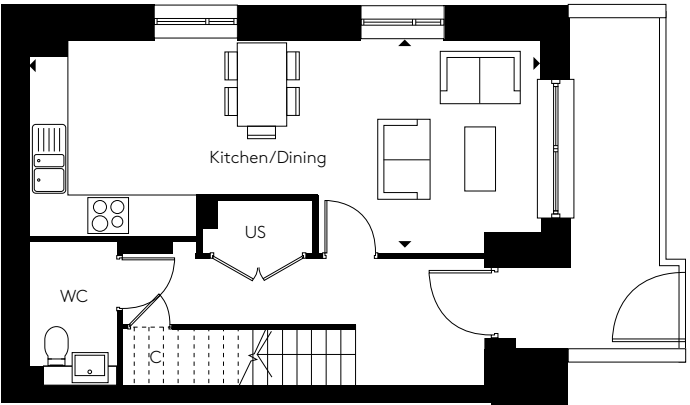
GREEN SQUARE

DUPLEX TYPE 8



Podium Garden
5.60m x 5.00m 18'4" x 16'4"

Floor 1

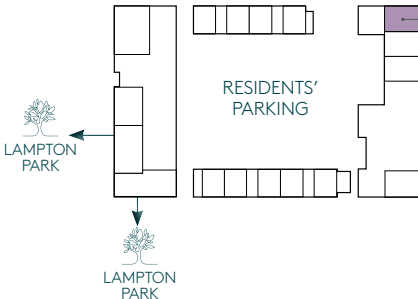


Ground

G3.1 – 3 bedroom – 1,353 sq ft

| | | |
|-------------------|---------------|----------------|
| Kitchen/Dining | 3.05m x 8.30m | 10'0" x 27'2" |
| Living Room | 3.35m x 5.35m | 10'11" x 17'6" |
| Principal Bedroom | 2.75m x 6.80m | 9'0" x 22'3" |
| Bedroom 2 | 2.65m x 6.80m | 8'8" x 22'3" |
| Bedroom 3 | 2.20m x 5.75m | 7'2" x 18'10" |

Ground



Floor 1



C = Cupboard W = Wardrobe R = Riser US = Utility Store [dashed box] = Indicative Wardrobe Position

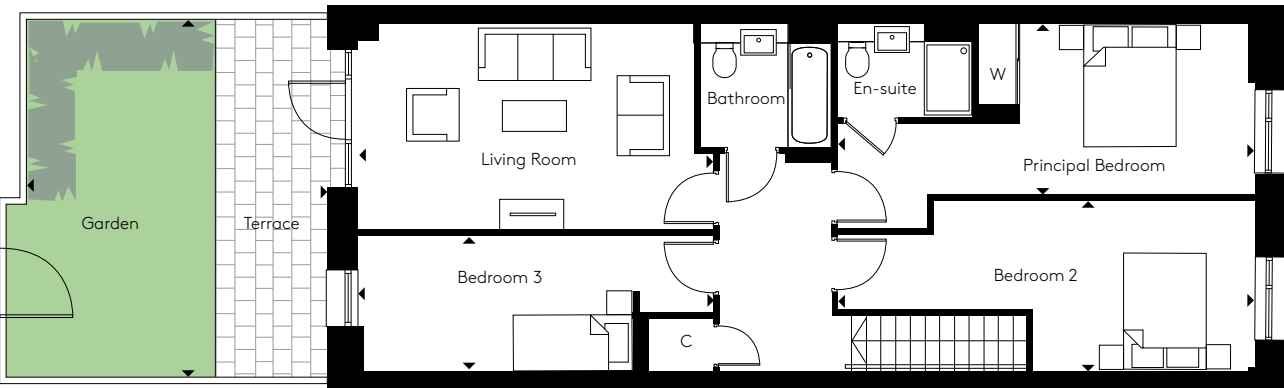


All floorplans are not to scale. Layouts provide approximate measurements only and are subject to planning. Dimensions, which are taken from the indicated points of measurement, are for guidance only and are not intended to be used for window treatments or items of furniture. Bathroom and kitchen layouts are indicative only and are subject to change. Wardrobe size and position may vary. The total square footage given is an estimate only. In the event of your making an offer you should refer to the contract documentation for information and contractual provisions relating to net sales area. The information contained within this document does not constitute part of any offer, contract, or warranty. Whilst the plans have been prepared with all due care for the convenience of the intending purchaser, the information contained herein is a preliminary guide only.

All floorplans are not to scale. Layouts provide approximate measurements only and are subject to planning. Dimensions, which are taken from the indicated points of measurement, are for guidance only and are not intended to be used for window treatments or items of furniture. Bathroom and kitchen layouts are indicative only and are subject to change. Wardrobe size and position may vary. The total square footage given is an estimate only. In the event of your making an offer you should refer to the contract documentation for information and contractual provisions relating to net sales area. The information contained within this document does not constitute part of any offer, contract, or warranty. Whilst the plans have been prepared with all due care for the convenience of the intending purchaser, the information contained herein is a preliminary guide only.

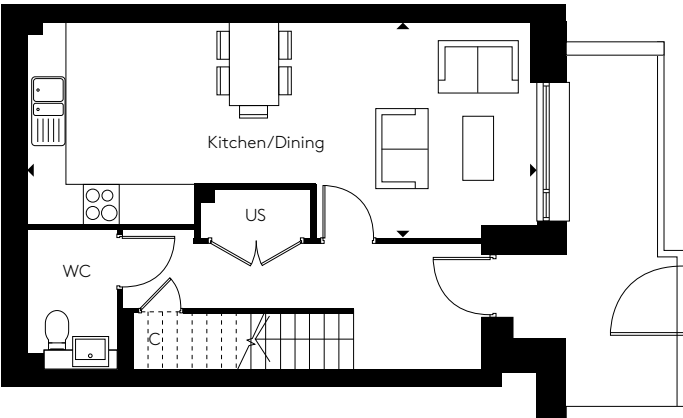
GREEN SQUARE

DUPLEX TYPE 9



Floor 1

G3.2 Podium Garden
5.30m x 5.80m 17'4" x 19'0"
G3.3 Podium Garden
5.30m x 5.90m 17'4" x 19'4"



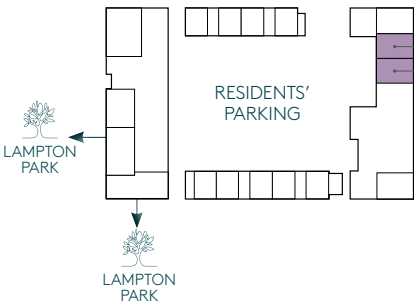
Ground

G3.2* – 3 bedroom – 1,372 sq ft

G3.3 – 3 bedroom – 1,375 sq ft

| | | |
|-------------------|---------------|----------------|
| Kitchen/Dining | 3.50m x 8.20m | 11'5" x 26'10" |
| Living Room | 5.75m x 3.30m | 18'10" x 10'9" |
| Principal Bedroom | 2.75m x 6.80m | 9'0" x 22'3" |
| Bedroom 2 | 2.75m x 6.80m | 9'0" x 22'3" |
| Bedroom 3 | 5.75m x 2.20m | 18'10" x 7'2" |

Ground



Floor 1

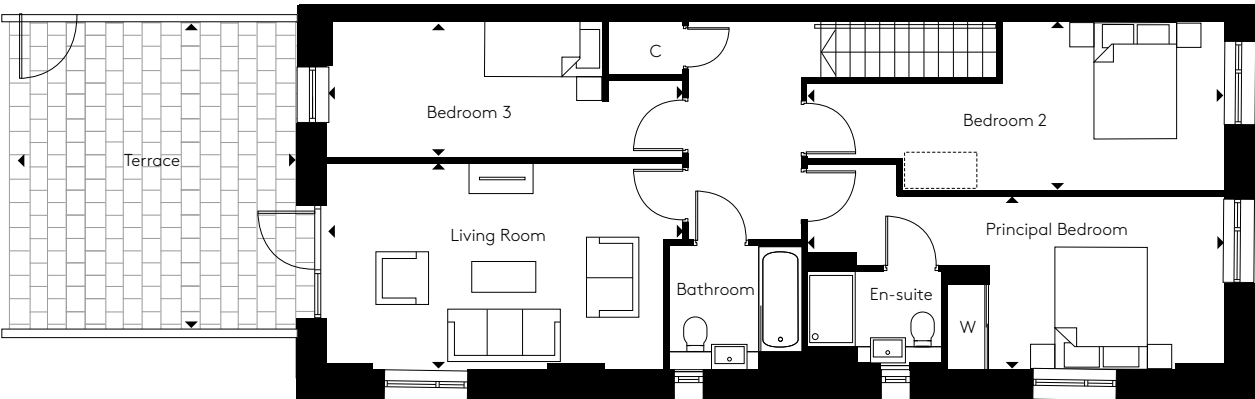


C = Cupboard W = Wardrobe R = Riser US = Utility Store [] = Indicative Wardrobe Position

*Handed

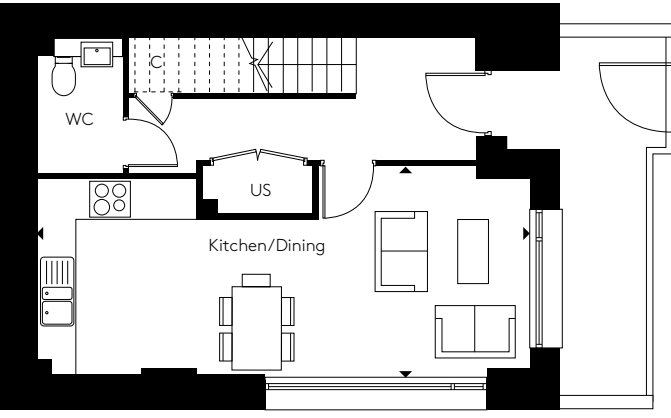
GREEN SQUARE

DUPLEX TYPE 10



Floor 1

Terrace
4.85m x 4.90m 15'10" x 16'0"

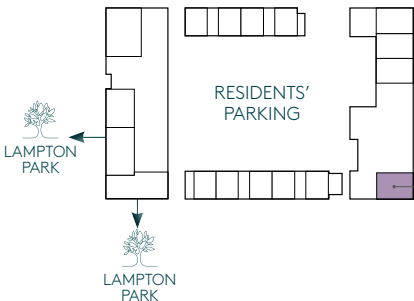


Ground

G3.4 – 3 bedroom – 1,375 sq ft

| | | |
|-------------------|---------------|----------------|
| Kitchen/Dining | 3.60m x 8.30m | 11'9" x 27'2" |
| Living Room | 3.25m x 5.75m | 10'7" x 18'10" |
| Principal Bedroom | 2.75m x 6.80m | 9'0" x 22'3" |
| Bedroom 2 | 2.75m x 6.85m | 9'0" x 22'5" |
| Bedroom 3 | 2.20m x 5.75m | 7'2" x 18'10" |

Ground



Floor 1



C = Cupboard W = Wardrobe R = Riser US = Utility Store [] = Indicative Wardrobe Position

All floorplans are not to scale. Layouts provide approximate measurements only and are subject to planning. Dimensions, which are taken from the indicated points of measurement, are for guidance only and are not intended to be used for window treatments or items of furniture. Bathroom and kitchen layouts are indicative only and are subject to change. Wardrobe size and position may vary. The total square footage given is an estimate only. In the event of your making an offer you should refer to the contract documentation for information and contractual provisions relating to net sales area. The information contained within this document does not constitute part of any offer, contract, or warranty. Whilst the plans have been prepared with all due care for the convenience of the intending purchaser, the information contained herein is a preliminary guide only.



WORKING TOGETHER TO CREATE OUTSTANDING HOMES

LAMPTON PARKSIDE IS A VISIONARY COLLABORATION
BETWEEN HILL AND NOTTING HILL GENESIS, BRINGING TOGETHER
FIVE STAR HOUSEBUILDING WITH A COMMITMENT TO MAINTAINING
A DIVERSE AND THRIVING COMMUNITY.



The Hill Group is a top 10 housebuilder* and one of the leading developers in London, the home counties, and the South. The company is renowned for its partnership ethos, specialising in the building of distinctive new places and communities where people want to live, work, and socialise.

In its 25th year, this family-owned and operated company has grown to establish itself as the UK's second-largest privately-owned housebuilder, with an impressive and diverse portfolio of projects ranging from landmark, mixed-use regenerations, and inner-city apartment developments to homes in rural communities.

Employing over 950 staff, the company operates from six strategically located regional offices including Bristol and Abingdon to help facilitate growth in the South West and the Midlands, with its head office based in Waltham Abbey, Essex.

Hill completed 2,886 homes in the last financial year and has a controlled development pipeline of over 8,800 homes. Around half of its portfolio is in joint ventures to deliver a range of mixed-tenure developments, reflecting Hill's commitment to partnerships with government, local authorities, housing associations, and private clients.

Since the company was founded in 1999, Hill has won over 500 industry awards, including the esteemed title of WhatHouse? Housebuilder of the Year in 2015, 2020 and 2023. Most recently in 2024, Millside Grange in Croxley Green also won The Standard's Homes & Property Award for Best Commuter Home.

In addition, Hill's dedication to delivering the highest quality homes and exceptional customer service has earned the housebuilder its 5-star status in the Home Builders Federation's annual Customer Satisfaction Survey for the past eight years. With a score of 4.8 out of 5, Hill is also ranked as the number one housebuilder on Trustpilot.

Hill is donating 200 fully equipped modular homes to local authorities and homeless charities as part of a £15 million pledge through its Foundation 200 programme, launched in 2019 to mark Hill's 20th anniversary.

Follow us on Instagram @CreatedbyHill



At Notting Hill Genesis, we build and maintain quality affordable homes, creating diverse and thriving communities.

Notting Hill Genesis are one of the largest housing associations in London and the south-east, owning and managing more than 66,000 homes. We provide homes across a range of tenures, are a leading provider of Shared Ownership, and are committed to realising our vision, which is to provide homes that build a better place for all.

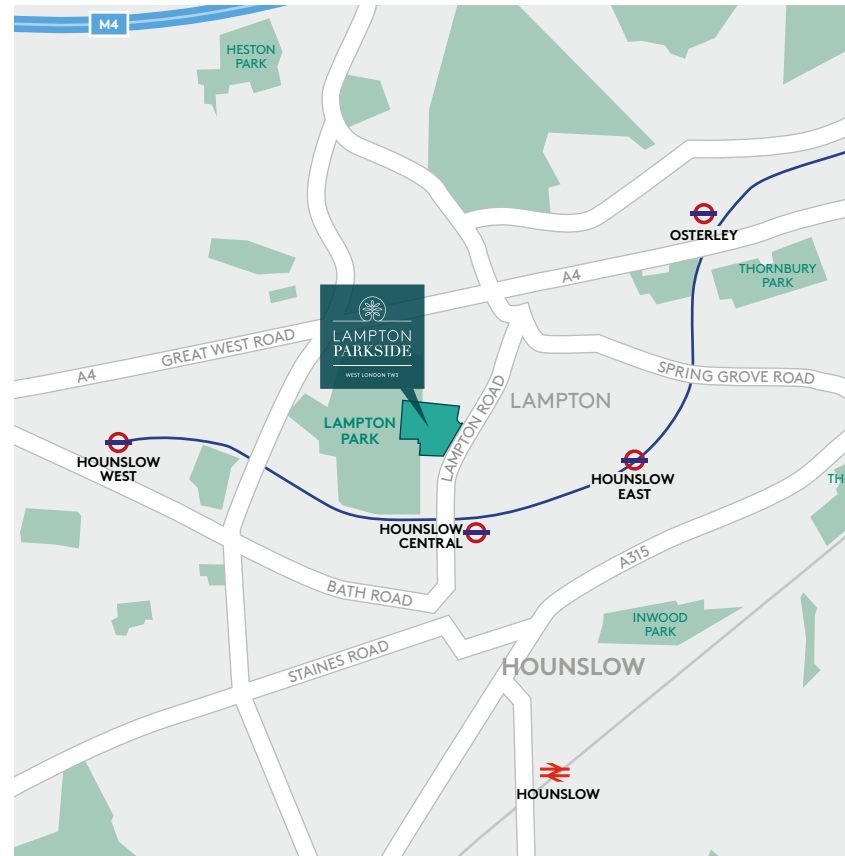
Our focus is our customers. We put their needs at the heart of our structures, processes and systems and they drive our decisions each and every day. We want them to be proud of the place they call home and from where they can begin to build lives, communities and futures.

Image is of the residents' terrace from Green Square.



*The Hill Group was listed within the top 10 of the Top 150 UK Contractors and Housebuilders published by Building.co.uk in December 2024

HOW TO FIND US



Lampton Parkside Sales Suite
Lampton Road
TW3 4FD

020 3959 0900
lamptonparkside.co.uk

This brochure, and the description and measurements herein, do not form any part of a contract. Whilst every effort has been made to ensure accuracy, this cannot always be guaranteed. Site layouts, and specifications are taken from drawings which were correct at the time of print. The information and imagery contained in this brochure is for guidance purposes only and does not constitute a contract, part of contract or warranty. Images of the Lampton Parkside properties are computer generated and the landscaping may have been enhanced. Details correct at time of going to print.

lamptonparkside.co.uk

A UNIQUE COLLABORATION BETWEEN

