

# WREN HOUSE



KEW  
BRIDGE  
RISE





Computer generated image based on view from Apartment 168 is indicative only



Stunning panoramas on your doorstep  
and bespoke details that make your  
home truly yours – this is a place that  
exceeds expectations in every way.

Wren House gracefully embodies the enchanting essence of the nearby gardens at Syon Park and Kew Gardens, providing stunning views of the Eastern and Western courtyards. Conveniently located near Kew Bridge Station, commuting to work is effortless. The harmonious blend of light, space, and inspired design creates inviting spaces that you'll always look forward to returning to. With impressive residents-only facilities and podium gardens, Wren House offers a lifestyle that's elevated in every sense of the word.



Wren  
House







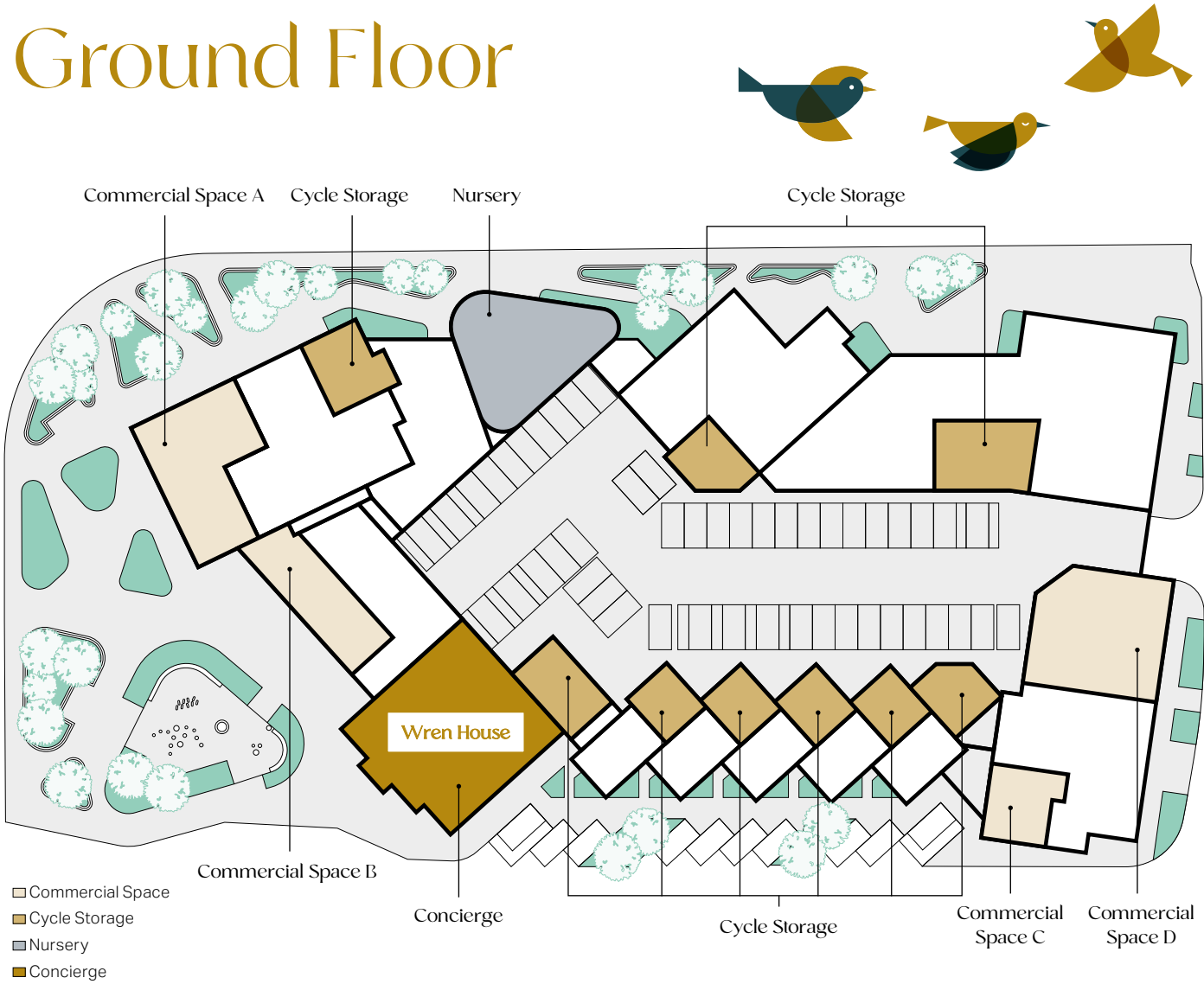
The information contained within this document does not constitute part of any offer, contract or warranty. Whilst the plans have been prepared with all due care for the convenience of the intending purchaser, the information contained herein is a preliminary guide only. Areas such as roads, paths, and patios plus trees and landscaping are indicative only and may vary.

# Kew Bridge Rise from the sky.

Nestled between the Western and Eastern Courtyards, Wren House is in a prime position for garden views. And there will be plenty of opportunities to enjoy them as each home has a private balcony. With a nursery, residents-only gym and co-working areas all on site, and the added benefit of the concierge located within Wren House: everything you could need (and more) is within minutes from your front door.



# Ground Floor



# First Floor



## THE COURTYARDS

Green in every direction. Wren house has been designed to offer brilliant views across the Eastern and Western courtyards. From the concierge and on-site nursery to the multiple open spaces; every home has easy access to facilities and its own private balcony, terrace or winter garden.



# Floor 2

PLOT 104  
TYPE 3I  
1 BEDROOM APARTMENT

|                           |               |                |
|---------------------------|---------------|----------------|
| Kitchen / Dining / Living | 7.65m x 3.20m | 25'1" x 10'6"  |
| Bedroom                   | 4.70m x 3.30m | 15'6" x 10'10" |
| Balcony                   | 1.55m x 3.30m | 5'1" x 10'9"   |

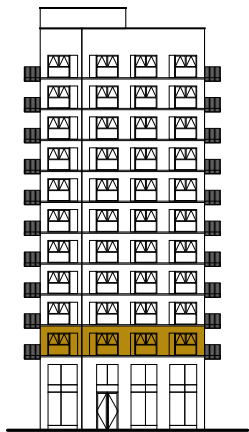
PLOT 105  
TYPE O9  
2 BEDROOM APARTMENT

|                           |               |               |
|---------------------------|---------------|---------------|
| Kitchen / Dining / Living | 4.00m x 5.80m | 13'2" x 19'0" |
| Principal Bedroom         | 3.50m x 3.85m | 11'6" x 12'7" |
| Bedroom 2                 | 4.20m x 2.65m | 13'9" x 8'9"  |
| Balcony                   | 1.55m x 4.65m | 5'1" x 15'3"  |

PLOT 106  
TYPE O5  
2 BEDROOM APARTMENT

|                           |               |               |
|---------------------------|---------------|---------------|
| Kitchen / Dining / Living | 4.10m x 5.85m | 13'5" x 19'3" |
| Principal Bedroom         | 3.20m x 3.80m | 10'7" x 12'6" |
| Bedroom 2                 | 4.30m x 2.95m | 14'1" x 9'9"  |
| Balcony                   | 1.55m x 4.65m | 5'1" x 15'3"  |

## SOUTH ELEVATION



## KEY

- One bedroom
- Two bedroom
- Measurements
- W

 Wardrobe
- C

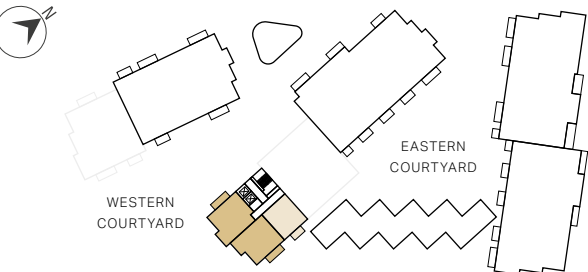
 Cupboard
- Indicative Wardrobe Position
- US

 Utility Store
- WD

 Washer Dryer
- R

 Riser Cupboard

## WREN HOUSE



Apartment layouts provide approximate measurements only and are subject to planning. Dimensions, which are taken from the indicated points of measurements are for guidance only and are not intended to be used for window treatments or items of furniture. Bathroom and kitchen layouts are indicative only and are subject to change. Wardrobe size and position may vary. The information contained within this document does not constitute part of any offer, contract or warranty. Whilst the plans have been prepared with all due care for convenience of the intending purchaser, the information herein is a preliminary guide only.



\*Reduced head height at 2075mm to plot 104



# Floor 3

PLOT 107  
TYPE O6  
2 BEDROOM APARTMENT

|                           |               |                |
|---------------------------|---------------|----------------|
| Kitchen / Dining / Living | 7.70m x 3.80m | 25'3" x 12'5"  |
| Principal Bedroom         | 5.15m x 3.35m | 16'10" x 11'1" |
| Bedroom 2                 | 3.85m x 2.90m | 12'7" x 9'6"   |
| Balcony                   | 1.55m x 4.65m | 5'1" x 15'3"   |

PLOT 108  
TYPE I7  
2 BEDROOM APARTMENT

|                           |               |                |
|---------------------------|---------------|----------------|
| Kitchen / Dining / Living | 9.95m x 3.30m | 32'9" x 10'10" |
| Principal Bedroom         | 5.55m x 3.00m | 18'3" x 9'10"  |
| Bedroom 2                 | 5.25m x 3.25m | 17'3" x 10'9"  |
| Balcony 1                 | 1.55m x 3.30m | 5'1" x 10'9"   |
| Balcony 2                 | 1.55m x 3.15m | 5'1" x 10'5"   |

PLOTS 109, 110 & 111  
TYPE O2  
1 BEDROOM APARTMENT

|                           |               |               |
|---------------------------|---------------|---------------|
| Kitchen / Dining / Living | 7.75m x 3.20m | 25'5" x 10'7" |
| Bedroom                   | 4.90m x 3.25m | 16'0" x 10'7" |
| Balcony                   | 1.55m x 3.30m | 5'1" x 10'9"  |

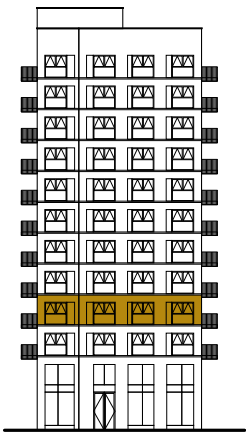
PLOT 112  
TYPE O9  
2 BEDROOM APARTMENT

|                           |               |               |
|---------------------------|---------------|---------------|
| Kitchen / Dining / Living | 4.00m x 5.80m | 13'2" x 19'0" |
| Principal Bedroom         | 3.50m x 3.85m | 11'6" x 12'7" |
| Bedroom 2                 | 4.20m x 2.65m | 13'9" x 8'9"  |
| Balcony                   | 1.55m x 4.65m | 5'1" x 15'3"  |

PLOT 113  
TYPE O5  
2 BEDROOM APARTMENT

|                           |               |               |
|---------------------------|---------------|---------------|
| Kitchen / Dining / Living | 4.10m x 5.85m | 13'5" x 19'3" |
| Principal Bedroom         | 3.20m x 3.80m | 10'7" x 12'6" |
| Bedroom 2                 | 4.30m x 2.95m | 14'1" x 9'9"  |
| Balcony                   | 1.55m x 4.65m | 5'1" x 15'3"  |

## SOUTH ELEVATION



## KEY

- One bedroom
- Two bedroom
- ↔

Measurements
- W

Wardrobe
- C

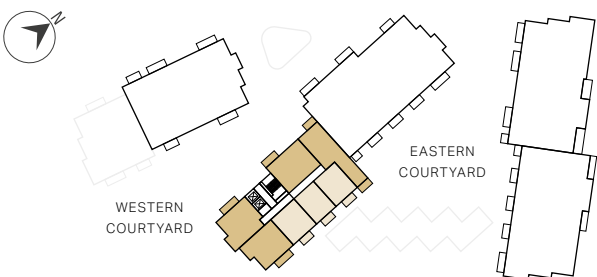
Cupboard
- Indicative Wardrobe Position
- US

Utility Store
- WD

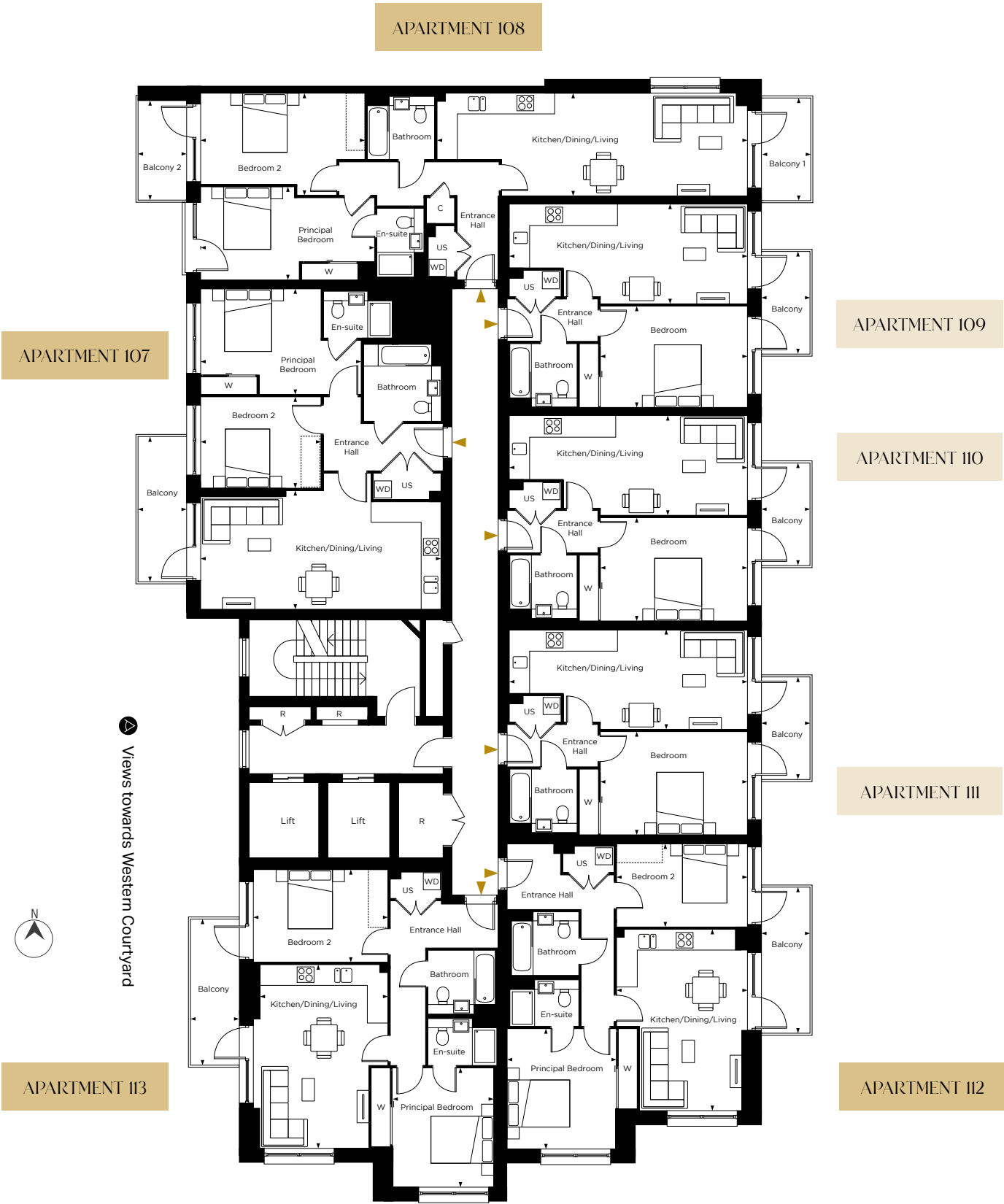
Washer Dryer
- R

Riser Cupboard

## WREN HOUSE



Apartment layouts provide approximate measurements only and are subject to planning. Dimensions, which are taken from the indicated points of measurements are for guidance only and are not intended to be used for window treatments or items of furniture. Bathroom and kitchen layouts are indicative only and are subject to change. Wardrobe size and position may vary. The information contained within this document does not constitute part of any offer, contract or warranty. Whilst the plans have been prepared with all due care for convenience of the intending purchaser, the information herein is a preliminary guide only.



# Floor 4

PLOT 114  
TYPE O6  
2 BEDROOM APARTMENT

|                           |               |                |
|---------------------------|---------------|----------------|
| Kitchen / Dining / Living | 7.70m x 3.80m | 25'3" x 12'5"  |
| Principal Bedroom         | 5.15m x 3.35m | 16'10" x 11'1" |
| Bedroom 2                 | 3.85m x 2.90m | 12'7" x 9'6"   |
| Balcony                   | 1.55m x 4.65m | 5'1" x 15'3"   |

PLOT 115  
TYPE 17  
2 BEDROOM APARTMENT

|                           |               |                |
|---------------------------|---------------|----------------|
| Kitchen / Dining / Living | 9.95m x 3.30m | 32'9" x 10'10" |
| Principal Bedroom         | 5.55m x 3.00m | 18'3" x 9'10"  |
| Bedroom 2                 | 5.25m x 3.25m | 17'3" x 10'9"  |
| Balcony 1                 | 1.55m x 3.30m | 5'1" x 10'9"   |
| Balcony 2                 | 1.55m x 3.15m | 5'1" x 10'5"   |

PLOTS 116, 117 & 118  
TYPE O2  
1 BEDROOM APARTMENT

|                           |               |               |
|---------------------------|---------------|---------------|
| Kitchen / Dining / Living | 7.75m x 3.20m | 25'5" x 10'7" |
| Bedroom                   | 4.90m x 3.25m | 16'0" x 10'7" |
| Balcony                   | 1.55m x 3.30m | 5'1" x 10'9"  |

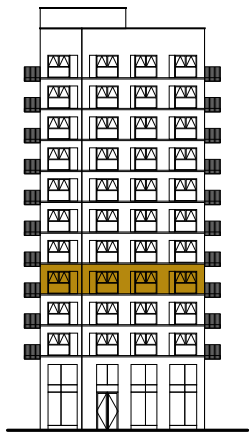
PLOT 119  
TYPE O9  
2 BEDROOM APARTMENT

|                           |               |               |
|---------------------------|---------------|---------------|
| Kitchen / Dining / Living | 4.00m x 5.80m | 13'2" x 19'0" |
| Principal Bedroom         | 3.50m x 3.85m | 11'6" x 12'7" |
| Bedroom 2                 | 4.20m x 2.65m | 13'9" x 8'9"  |
| Balcony                   | 1.55m x 4.65m | 5'1" x 15'3"  |

PLOT 120  
TYPE O5  
2 BEDROOM APARTMENT

|                           |               |               |
|---------------------------|---------------|---------------|
| Kitchen / Dining / Living | 4.10m x 5.85m | 13'5" x 19'3" |
| Principal Bedroom         | 3.20m x 3.80m | 10'7" x 12'6" |
| Bedroom 2                 | 4.30m x 2.95m | 14'1" x 9'9"  |
| Balcony                   | 1.55m x 4.65m | 5'1" x 15'3"  |

## SOUTH ELEVATION



## KEY

- One bedroom
- Two bedroom
- Measurements
- W

 Wardrobe
- C

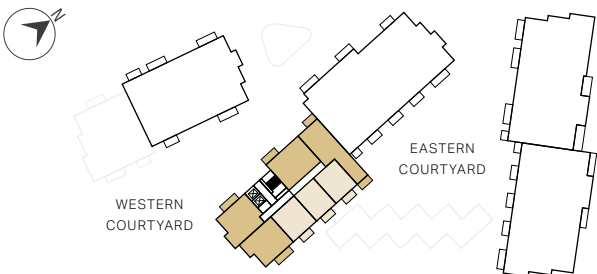
 Cupboard
- Indicative Wardrobe Position
- US

 Utility Store
- WD

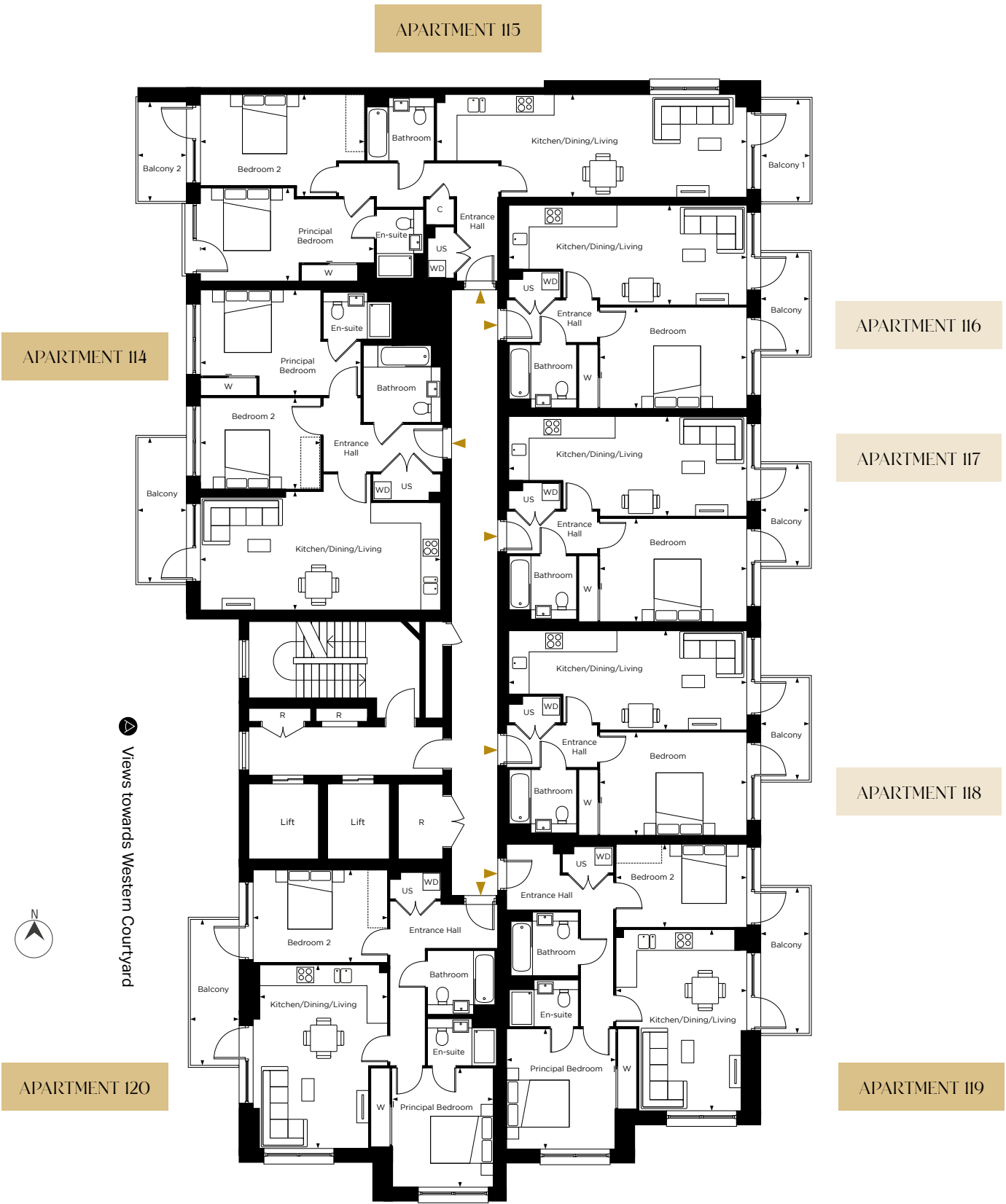
 Washer Dryer
- R

 Riser Cupboard

## WREN HOUSE



Apartment layouts provide approximate measurements only and are subject to planning. Dimensions, which are taken from the indicated points of measurements are for guidance only and are not intended to be used for window treatments or items of furniture. Bathroom and kitchen layouts are indicative only and are subject to change. Wardrobe size and position may vary. The information contained within this document does not constitute part of any offer, contract or warranty. Whilst the plans have been prepared with all due care for convenience of the intending purchaser, the information herein is a preliminary guide only.





# Floor 5

PLOT 121  
TYPE O6  
2 BEDROOM APARTMENT

|                           |               |                |
|---------------------------|---------------|----------------|
| Kitchen / Dining / Living | 7.70m x 3.80m | 25'3" x 12'5"  |
| Principal Bedroom         | 5.15m x 3.35m | 16'10" x 11'1" |
| Bedroom 2                 | 3.85m x 2.90m | 12'7" x 9'6"   |
| Balcony                   | 1.55m x 4.65m | 5'1" x 15'3"   |

PLOT 122  
TYPE I7  
2 BEDROOM APARTMENT

|                           |               |                |
|---------------------------|---------------|----------------|
| Kitchen / Dining / Living | 9.95m x 3.30m | 32'9" x 10'10" |
| Principal Bedroom         | 5.55m x 3.00m | 18'3" x 9'10"  |
| Bedroom 2                 | 5.25m x 3.25m | 17'3" x 10'9"  |
| Balcony 1                 | 1.55m x 3.30m | 5'1" x 10'9"   |
| Balcony 2                 | 1.55m x 3.15m | 5'1" x 10'5"   |

PLOTS 123, 124 & 125  
TYPE O2  
1 BEDROOM APARTMENT

|                           |               |               |
|---------------------------|---------------|---------------|
| Kitchen / Dining / Living | 7.75m x 3.20m | 25'5" x 10'7" |
| Bedroom                   | 4.90m x 3.25m | 16'0" x 10'7" |
| Balcony                   | 1.55m x 3.30m | 5'1" x 10'9"  |

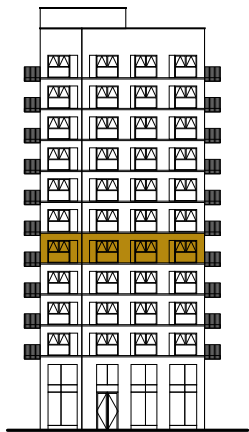
PLOT 126  
TYPE O9  
2 BEDROOM APARTMENT

|                           |               |               |
|---------------------------|---------------|---------------|
| Kitchen / Dining / Living | 4.00m x 5.80m | 13'2" x 19'0" |
| Principal Bedroom         | 3.50m x 3.85m | 11'6" x 12'7" |
| Bedroom 2                 | 4.20m x 2.65m | 13'9" x 8'9"  |
| Balcony                   | 1.55m x 4.65m | 5'1" x 15'3"  |

PLOT 127  
TYPE O5  
2 BEDROOM APARTMENT

|                           |               |               |
|---------------------------|---------------|---------------|
| Kitchen / Dining / Living | 4.10m x 5.85m | 13'5" x 19'3" |
| Principal Bedroom         | 3.20m x 3.80m | 10'7" x 12'6" |
| Bedroom 2                 | 4.30m x 2.95m | 14'1" x 9'9"  |
| Balcony                   | 1.55m x 4.65m | 5'1" x 15'3"  |

## SOUTH ELEVATION



## KEY

- One bedroom

● Two bedroom
- ↔ Measurements

W Wardrobe

C Cupboard

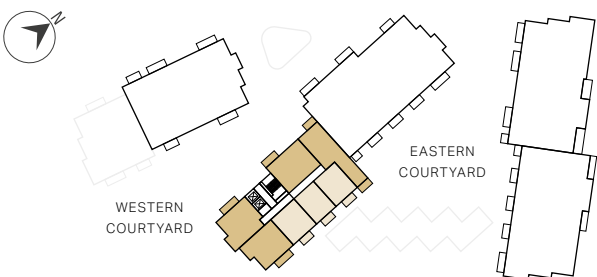
⋮ Indicative Wardrobe Position

US Utility Store

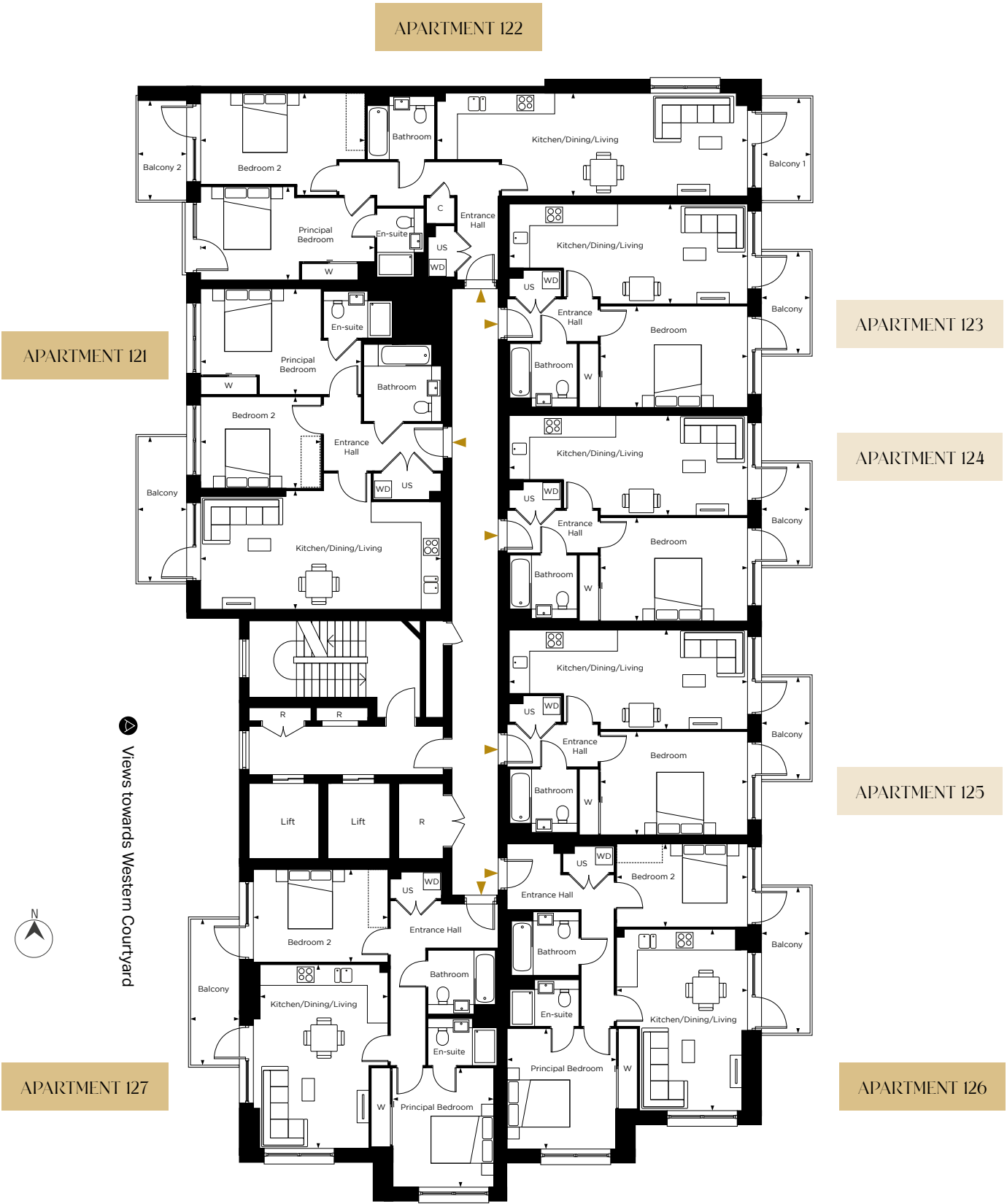
WD Washer Dryer

R Riser Cupboard

## WREN HOUSE



Apartment layouts provide approximate measurements only and are subject to planning. Dimensions, which are taken from the indicated points of measurements are for guidance only and are not intended to be used for window treatments or items of furniture. Bathroom and kitchen layouts are indicative only and are subject to change. Wardrobe size and position may vary. The information contained within this document does not constitute part of any offer, contract or warranty. Whilst the plans have been prepared with all due care for convenience of the intending purchaser, the information herein is a preliminary guide only.





# Floor 6

PLOT 128  
TYPE O6  
2 BEDROOM APARTMENT

|                           |               |                |
|---------------------------|---------------|----------------|
| Kitchen / Dining / Living | 7.70m x 3.80m | 25'3" x 12'5"  |
| Principal Bedroom         | 5.15m x 3.35m | 16'10" x 11'1" |
| Bedroom 2                 | 3.85m x 2.90m | 12'7" x 9'6"   |
| Balcony                   | 1.55m x 4.65m | 5'1" x 15'3"   |

PLOT 129  
TYPE I7  
2 BEDROOM APARTMENT

|                           |               |                |
|---------------------------|---------------|----------------|
| Kitchen / Dining / Living | 9.95m x 3.30m | 32'9" x 10'10" |
| Principal Bedroom         | 5.55m x 3.00m | 18'3" x 9'10"  |
| Bedroom 2                 | 5.25m x 3.25m | 17'3" x 10'9"  |
| Balcony 1                 | 1.55m x 3.30m | 5'1" x 10'9"   |
| Balcony 2                 | 1.55m x 3.15m | 5'1" x 10'5"   |

PLOTS I30, I31 & I32  
TYPE O2  
1 BEDROOM APARTMENT

|                           |               |               |
|---------------------------|---------------|---------------|
| Kitchen / Dining / Living | 7.75m x 3.20m | 25'5" x 10'7" |
| Bedroom                   | 4.90m x 3.25m | 16'0" x 10'7" |
| Balcony                   | 1.55m x 3.30m | 5'1" x 10'9"  |

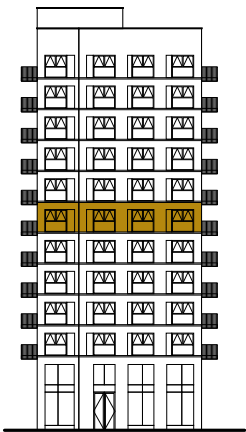
PLOT I33  
TYPE O9  
2 BEDROOM APARTMENT

|                           |               |               |
|---------------------------|---------------|---------------|
| Kitchen / Dining / Living | 4.00m x 5.80m | 13'2" x 19'0" |
| Principal Bedroom         | 3.50m x 3.85m | 11'6" x 12'7" |
| Bedroom 2                 | 4.20m x 2.65m | 13'9" x 8'9"  |
| Balcony                   | 1.55m x 4.65m | 5'1" x 15'3"  |

PLOT I34  
TYPE O5  
2 BEDROOM APARTMENT

|                           |               |               |
|---------------------------|---------------|---------------|
| Kitchen / Dining / Living | 4.10m x 5.85m | 13'5" x 19'3" |
| Principal Bedroom         | 3.20m x 3.80m | 10'7" x 12'6" |
| Bedroom 2                 | 4.30m x 2.95m | 14'1" x 9'9"  |
| Balcony                   | 1.55m x 4.65m | 5'1" x 15'3"  |

## SOUTH ELEVATION



## KEY

- One bedroom
- Two bedroom
- Measurements
- W

Wardrobe
- C

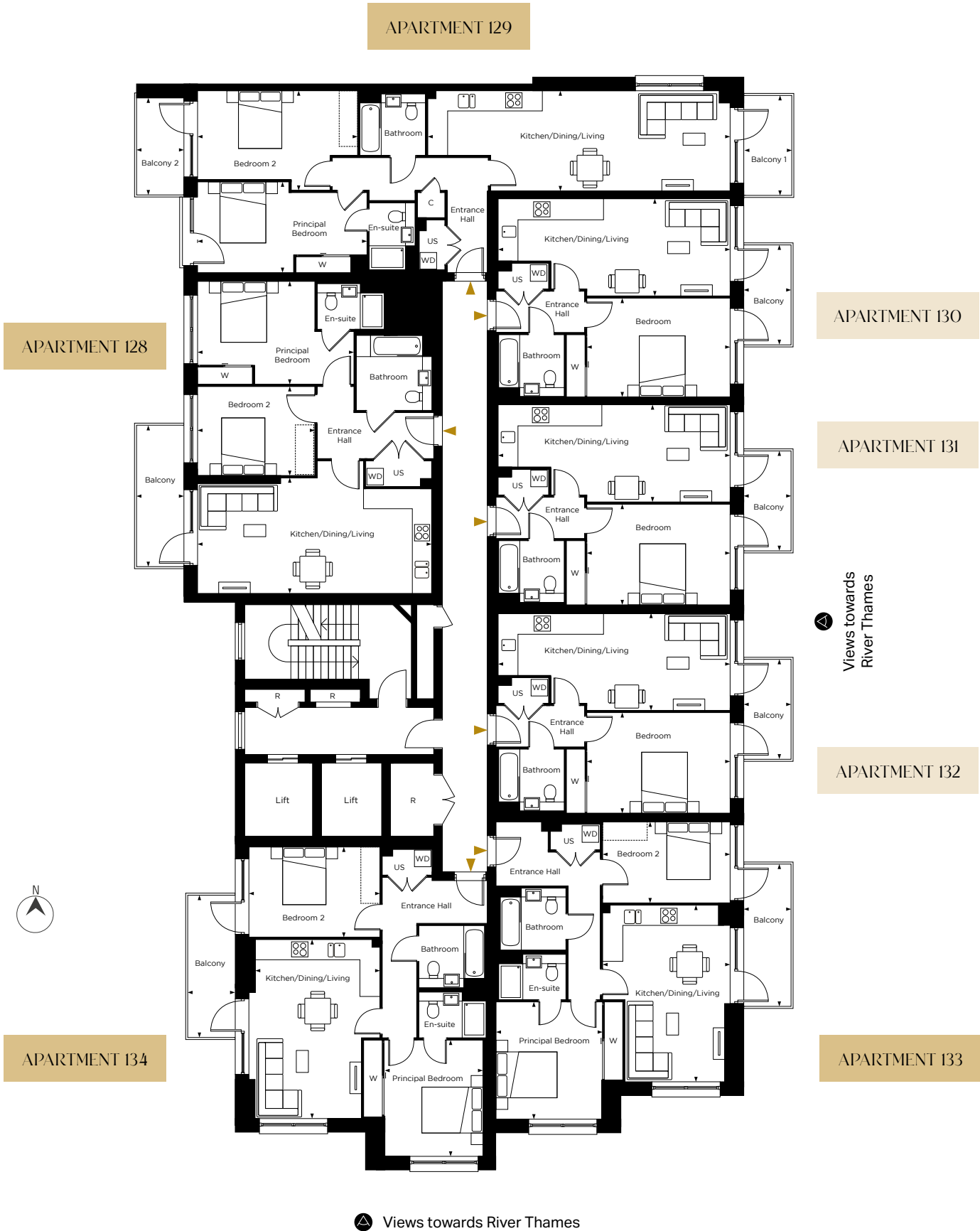
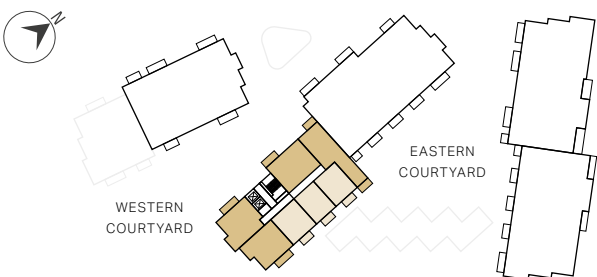
Cupboard
- Indicative Wardrobe Position
- US

Utility Store
- WD

Washer Dryer
- R

Riser Cupboard

## WREN HOUSE



Apartment layouts provide approximate measurements only and are subject to planning. Dimensions, which are taken from the indicated points of measurements are for guidance only and are not intended to be used for window treatments or items of furniture. Bathroom and kitchen layouts are indicative only and are subject to change. Wardrobe size and position may vary. The information contained within this document does not constitute part of any offer, contract or warranty. Whilst the plans have been prepared with all due care for convenience of the intending purchaser, the information herein is a preliminary guide only.



# Floor 7

PLOT 135  
TYPE O6  
2 BEDROOM APARTMENT

|                           |               |                |
|---------------------------|---------------|----------------|
| Kitchen / Dining / Living | 7.70m x 3.80m | 25'3" x 12'5"  |
| Principal Bedroom         | 5.15m x 3.35m | 16'10" x 11'1" |
| Bedroom 2                 | 3.85m x 2.90m | 12'7" x 9'6"   |
| Balcony                   | 1.55m x 4.65m | 5'1" x 15'3"   |

PLOT 136  
TYPE I7  
2 BEDROOM APARTMENT

|                           |               |                |
|---------------------------|---------------|----------------|
| Kitchen / Dining / Living | 9.95m x 3.30m | 32'9" x 10'10" |
| Principal Bedroom         | 5.55m x 3.00m | 18'3" x 9'10"  |
| Bedroom 2                 | 5.25m x 3.25m | 17'3" x 10'9"  |
| Balcony 1                 | 1.55m x 3.30m | 5'1" x 10'9"   |
| Balcony 2                 | 1.55m x 3.15m | 5'1" x 10'5"   |

PLOTS 137, 138 & 139  
TYPE O2  
1 BEDROOM APARTMENT

|                           |               |               |
|---------------------------|---------------|---------------|
| Kitchen / Dining / Living | 7.75m x 3.20m | 25'5" x 10'7" |
| Bedroom                   | 4.90m x 3.25m | 16'0" x 10'7" |
| Balcony                   | 1.55m x 3.30m | 5'1" x 10'9"  |

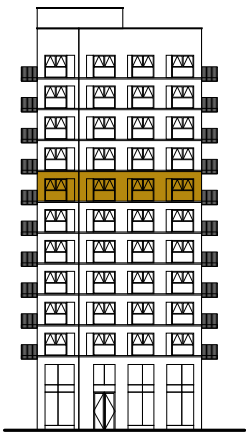
PLOT 140  
TYPE O9  
2 BEDROOM APARTMENT

|                           |               |               |
|---------------------------|---------------|---------------|
| Kitchen / Dining / Living | 4.00m x 5.80m | 13'2" x 19'0" |
| Principal Bedroom         | 3.50m x 3.85m | 11'6" x 12'7" |
| Bedroom 2                 | 4.20m x 2.65m | 13'9" x 8'9"  |
| Balcony                   | 1.55m x 4.65m | 5'1" x 15'3"  |

PLOT 141  
TYPE O5  
2 BEDROOM APARTMENT

|                           |               |               |
|---------------------------|---------------|---------------|
| Kitchen / Dining / Living | 4.10m x 5.85m | 13'5" x 19'3" |
| Principal Bedroom         | 3.20m x 3.80m | 10'7" x 12'6" |
| Bedroom 2                 | 4.30m x 2.95m | 14'1" x 9'9"  |
| Balcony                   | 1.55m x 4.65m | 5'1" x 15'3"  |

## SOUTH ELEVATION



## KEY

- One bedroom

● Two bedroom
- ↔ Measurements

W Wardrobe

C Cupboard

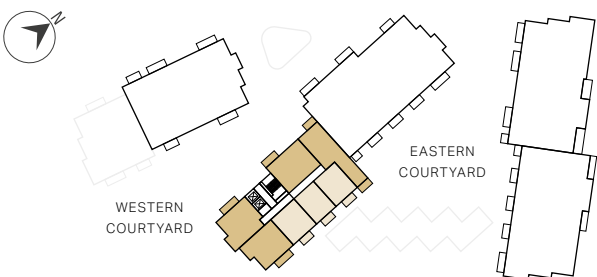
⋮ Indicative Wardrobe Position

US Utility Store

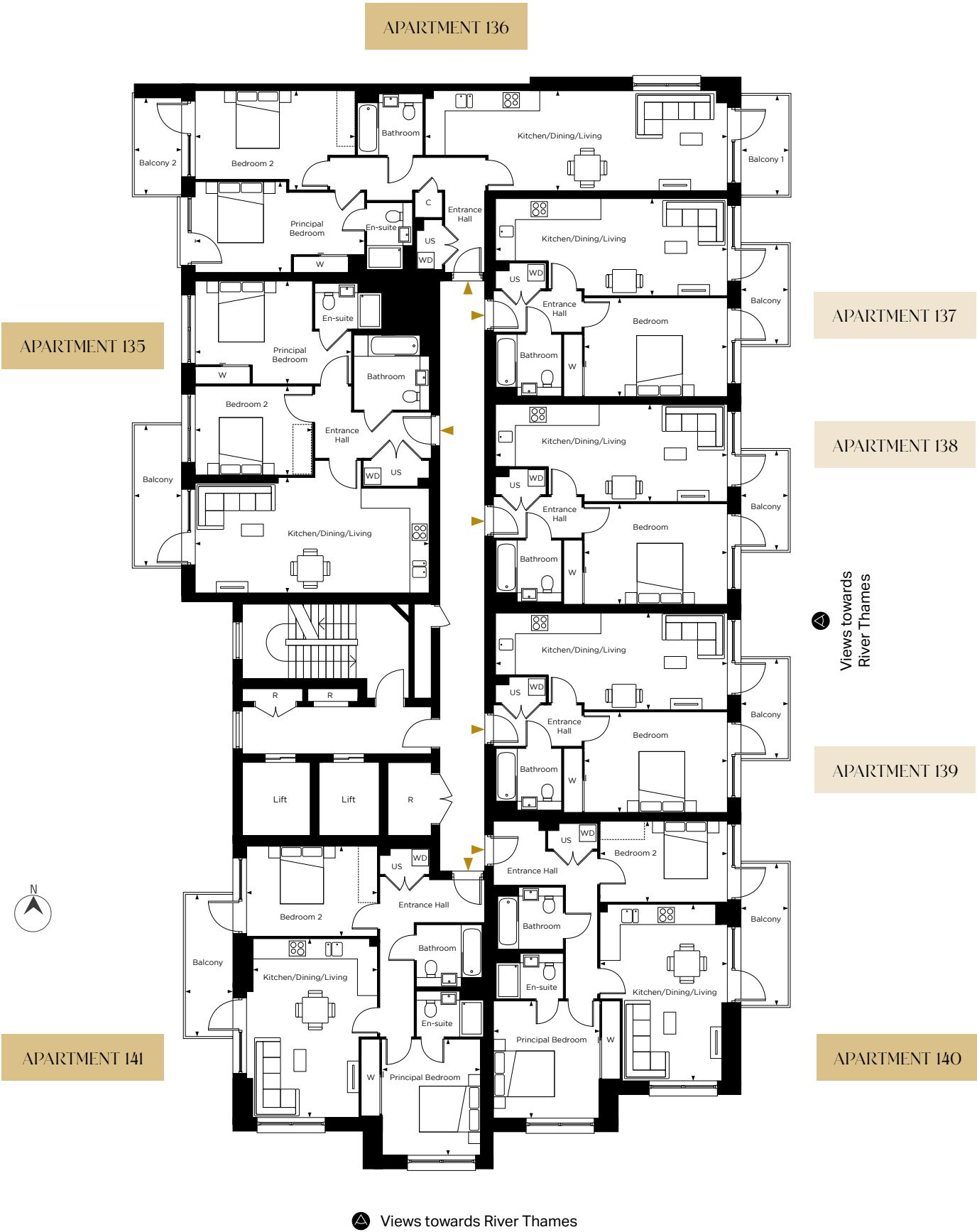
WD Washer Dryer

R Riser Cupboard

## WREN HOUSE



Apartment layouts provide approximate measurements only and are subject to planning. Dimensions, which are taken from the indicated points of measurements are for guidance only and are not intended to be used for window treatments or items of furniture. Bathroom and kitchen layouts are indicative only and are subject to change. Wardrobe size and position may vary. The information contained within this document does not constitute part of any offer, contract or warranty. Whilst the plans have been prepared with all due care for convenience of the intending purchaser, the information herein is a preliminary guide only.





# Floor 8

PLOT 142  
TYPE O6  
2 BEDROOM APARTMENT

|                           |               |                |
|---------------------------|---------------|----------------|
| Kitchen / Dining / Living | 7.70m x 3.80m | 25'3" x 12'5"  |
| Principal Bedroom         | 5.15m x 3.35m | 16'10" x 11'1" |
| Bedroom 2                 | 3.85m x 2.90m | 12'7" x 9'6"   |
| Balcony                   | 1.55m x 4.65m | 5'1" x 15'3"   |

PLOT 143  
TYPE I7  
2 BEDROOM APARTMENT

|                           |               |                |
|---------------------------|---------------|----------------|
| Kitchen / Dining / Living | 9.95m x 3.30m | 32'9" x 10'10" |
| Principal Bedroom         | 5.55m x 3.00m | 18'3" x 9'10"  |
| Bedroom 2                 | 5.25m x 3.25m | 17'3" x 10'9"  |
| Balcony 1                 | 1.55m x 3.30m | 5'1" x 10'9"   |
| Balcony 2                 | 1.55m x 3.15m | 5'1" x 10'5"   |

PLOTS 144, 145 & 146  
TYPE O2  
1 BEDROOM APARTMENT

|                           |               |               |
|---------------------------|---------------|---------------|
| Kitchen / Dining / Living | 7.75m x 3.20m | 25'5" x 10'7" |
| Bedroom                   | 4.90m x 3.25m | 16'0" x 10'7" |
| Balcony                   | 1.55m x 3.30m | 5'1" x 10'9"  |

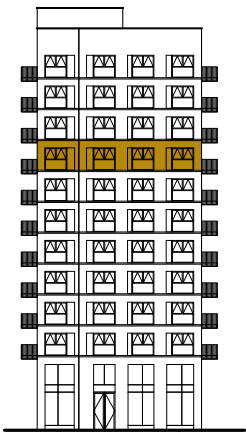
PLOT 147  
TYPE O9  
2 BEDROOM APARTMENT

|                           |               |               |
|---------------------------|---------------|---------------|
| Kitchen / Dining / Living | 4.00m x 5.80m | 13'2" x 19'0" |
| Principal Bedroom         | 3.50m x 3.85m | 11'6" x 12'7" |
| Bedroom 2                 | 4.20m x 2.65m | 13'9" x 8'9"  |
| Balcony                   | 1.55m x 4.65m | 5'1" x 15'3"  |

PLOT 148  
TYPE O5  
2 BEDROOM APARTMENT

|                           |               |               |
|---------------------------|---------------|---------------|
| Kitchen / Dining / Living | 4.10m x 5.85m | 13'5" x 19'3" |
| Principal Bedroom         | 3.20m x 3.80m | 10'7" x 12'6" |
| Bedroom 2                 | 4.30m x 2.95m | 14'1" x 9'9"  |
| Balcony                   | 1.55m x 4.65m | 5'1" x 15'3"  |

## SOUTH ELEVATION



## KEY

- One bedroom

● Two bedroom
- ↔ Measurements

W Wardrobe

C Cupboard

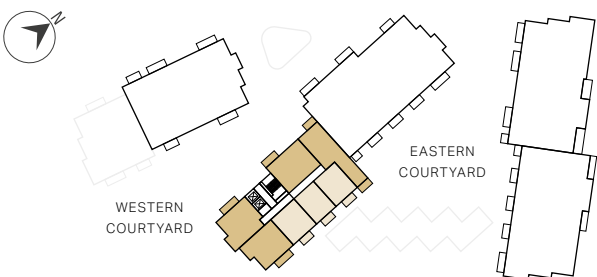
⋮ Indicative Wardrobe Position

US Utility Store

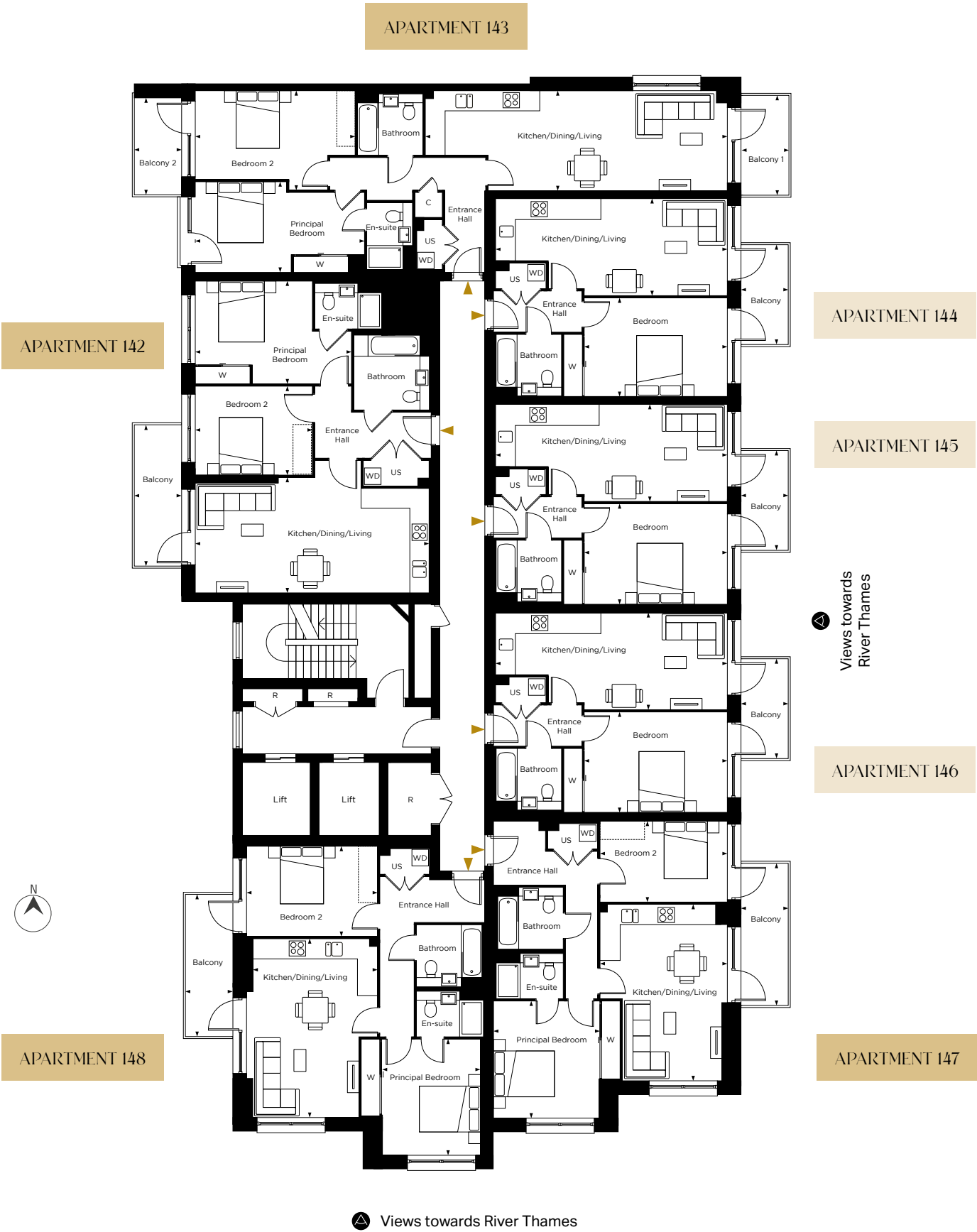
WD Washer Dryer

R Riser Cupboard

## WREN HOUSE



Apartment layouts provide approximate measurements only and are subject to planning. Dimensions, which are taken from the indicated points of measurements are for guidance only and are not intended to be used for window treatments or items of furniture. Bathroom and kitchen layouts are indicative only and are subject to change. Wardrobe size and position may vary. The information contained within this document does not constitute part of any offer, contract or warranty. Whilst the plans have been prepared with all due care for convenience of the intending purchaser, the information herein is a preliminary guide only.





# Floor 9

PLOT 149  
TYPE O6  
2 BEDROOM APARTMENT

|                           |               |                |
|---------------------------|---------------|----------------|
| Kitchen / Dining / Living | 7.70m x 3.80m | 25'3" x 12'5"  |
| Principal Bedroom         | 5.15m x 3.35m | 16'10" x 11'1" |
| Bedroom 2                 | 3.85m x 2.90m | 12'7" x 9'6"   |
| Balcony                   | 1.55m x 4.65m | 5'1" x 15'3"   |

PLOT 150  
TYPE I7  
2 BEDROOM APARTMENT

|                           |               |                |
|---------------------------|---------------|----------------|
| Kitchen / Dining / Living | 9.95m x 3.30m | 32'9" x 10'10" |
| Principal Bedroom         | 5.55m x 3.00m | 18'3" x 9'10"  |
| Bedroom 2                 | 5.25m x 3.25m | 17'3" x 10'9"  |
| Balcony 1                 | 1.55m x 3.30m | 5'1" x 10'9"   |
| Balcony 2                 | 1.55m x 3.15m | 5'1" x 10'5"   |

PLOTS 151, 152 & 153  
TYPE O2  
1 BEDROOM APARTMENT

|                           |               |               |
|---------------------------|---------------|---------------|
| Kitchen / Dining / Living | 7.75m x 3.20m | 25'5" x 10'7" |
| Bedroom                   | 4.90m x 3.25m | 16'0" x 10'7" |
| Balcony                   | 1.55m x 3.30m | 5'1" x 10'9"  |

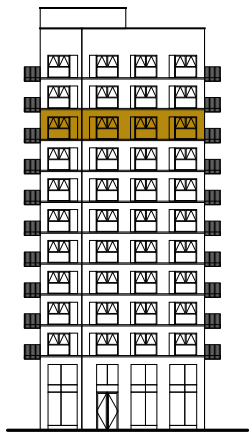
PLOT 154  
TYPE O9  
2 BEDROOM APARTMENT

|                           |               |               |
|---------------------------|---------------|---------------|
| Kitchen / Dining / Living | 4.00m x 5.80m | 13'2" x 19'0" |
| Principal Bedroom         | 3.50m x 3.85m | 11'6" x 12'7" |
| Bedroom 2                 | 4.20m x 2.65m | 13'9" x 8'9"  |
| Balcony                   | 1.55m x 4.65m | 5'1" x 15'3"  |

PLOT 155  
TYPE O5  
2 BEDROOM APARTMENT

|                           |               |               |
|---------------------------|---------------|---------------|
| Kitchen / Dining / Living | 4.10m x 5.85m | 13'5" x 19'3" |
| Principal Bedroom         | 3.20m x 3.80m | 10'7" x 12'6" |
| Bedroom 2                 | 4.30m x 2.95m | 14'1" x 9'9"  |
| Balcony                   | 1.55m x 4.65m | 5'1" x 15'3"  |

## SOUTH ELEVATION



## KEY

- One bedroom
- Two bedroom
- Measurements
- W

 Wardrobe
- C

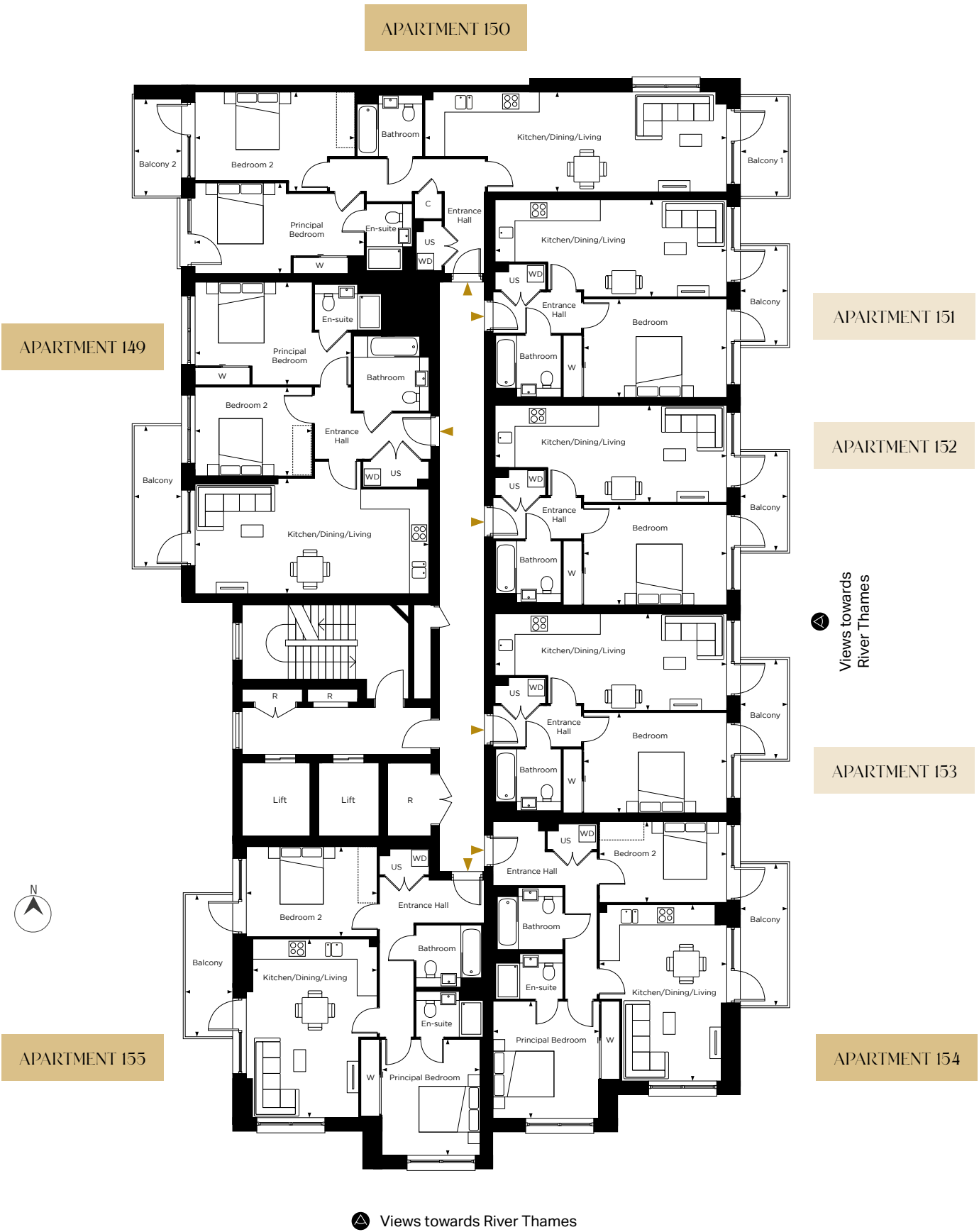
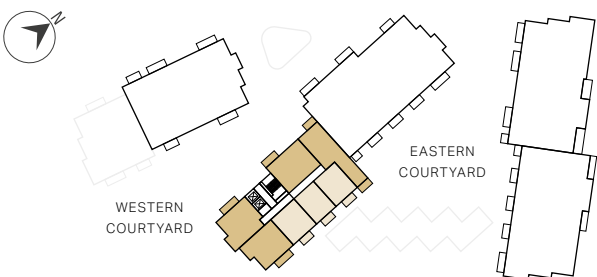
 Cupboard
- Indicative Wardrobe Position
- US

 Utility Store
- WD

 Washer Dryer
- R

 Riser Cupboard

## WREN HOUSE



Apartment layouts provide approximate measurements only and are subject to planning. Dimensions, which are taken from the indicated points of measurements are for guidance only and are not intended to be used for window treatments or items of furniture. Bathroom and kitchen layouts are indicative only and are subject to change. Wardrobe size and position may vary. The information contained within this document does not constitute part of any offer, contract or warranty. Whilst the plans have been prepared with all due care for convenience of the intending purchaser, the information herein is a preliminary guide only.



# Floor 10

PLOT 156  
TYPE O6  
2 BEDROOM APARTMENT

|                           |               |                |
|---------------------------|---------------|----------------|
| Kitchen / Dining / Living | 7.70m x 3.80m | 25'3" x 12'5"  |
| Principal Bedroom         | 5.15m x 3.35m | 16'10" x 11'1" |
| Bedroom 2                 | 3.85m x 2.90m | 12'7" x 9'6"   |
| Balcony                   | 1.55m x 4.65m | 5'1" x 15'3"   |

PLOT 157  
TYPE I7  
2 BEDROOM APARTMENT

|                           |               |                |
|---------------------------|---------------|----------------|
| Kitchen / Dining / Living | 9.95m x 3.30m | 32'9" x 10'10" |
| Principal Bedroom         | 5.55m x 3.00m | 18'3" x 9'10"  |
| Bedroom 2                 | 5.25m x 3.25m | 17'3" x 10'9"  |
| Balcony 1                 | 1.55m x 3.30m | 5'1" x 10'9"   |
| Balcony 2                 | 1.55m x 3.15m | 5'1" x 10'5"   |

PLOTS 158, 159 & 160  
TYPE O2  
1 BEDROOM APARTMENT

|                           |               |               |
|---------------------------|---------------|---------------|
| Kitchen / Dining / Living | 7.75m x 3.20m | 25'5" x 10'7" |
| Bedroom                   | 4.90m x 3.25m | 16'0" x 10'7" |
| Balcony                   | 1.55m x 3.30m | 5'1" x 10'9"  |

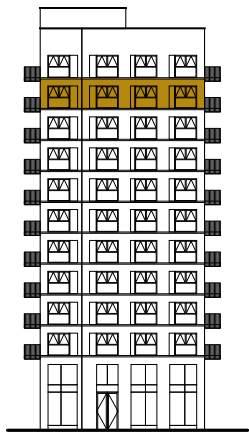
PLOT 161  
TYPE O9  
2 BEDROOM APARTMENT

|                           |               |               |
|---------------------------|---------------|---------------|
| Kitchen / Dining / Living | 4.00m x 5.80m | 13'2" x 19'0" |
| Principal Bedroom         | 3.50m x 3.85m | 11'6" x 12'7" |
| Bedroom 2                 | 4.20m x 2.65m | 13'9" x 8'9"  |
| Balcony                   | 1.55m x 4.65m | 5'1" x 15'3"  |

PLOT 162  
TYPE O5  
2 BEDROOM APARTMENT

|                           |               |               |
|---------------------------|---------------|---------------|
| Kitchen / Dining / Living | 4.10m x 5.85m | 13'5" x 19'3" |
| Principal Bedroom         | 3.20m x 3.80m | 10'7" x 12'6" |
| Bedroom 2                 | 4.30m x 2.95m | 14'1" x 9'9"  |
| Balcony                   | 1.55m x 4.65m | 5'1" x 15'3"  |

## SOUTH ELEVATION



## KEY

- One bedroom
- Two bedroom
- Measurements
- W

 Wardrobe
- C

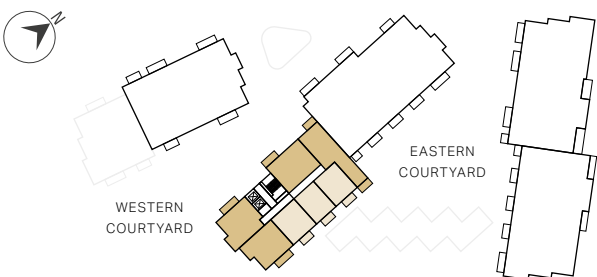
 Cupboard
- Indicative Wardrobe Position
- US

 Utility Store
- WD

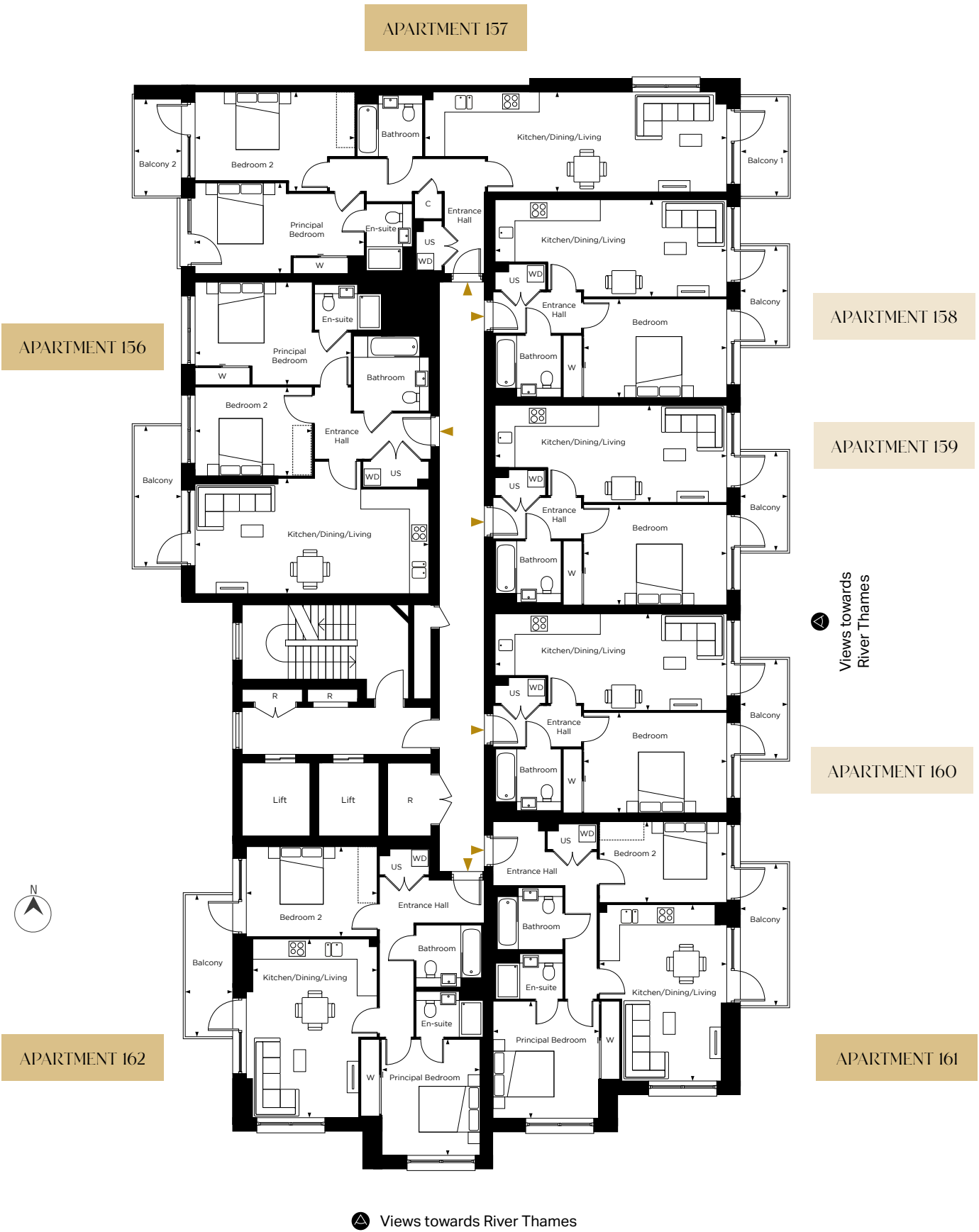
 Washer Dryer
- R

 Riser Cupboard

## WREN HOUSE



Apartment layouts provide approximate measurements only and are subject to planning. Dimensions, which are taken from the indicated points of measurements are for guidance only and are not intended to be used for window treatments or items of furniture. Bathroom and kitchen layouts are indicative only and are subject to change. Wardrobe size and position may vary. The information contained within this document does not constitute part of any offer, contract or warranty. Whilst the plans have been prepared with all due care for convenience of the intending purchaser, the information herein is a preliminary guide only.





# Floor 11

PLOT 163  
TYPE O6  
2 BEDROOM APARTMENT

|                           |               |                |
|---------------------------|---------------|----------------|
| Kitchen / Dining / Living | 7.70m x 3.80m | 25'3" x 12'5"  |
| Principal Bedroom         | 5.15m x 3.35m | 16'10" x 11'1" |
| Bedroom 2                 | 3.85m x 2.90m | 12'7" x 9'6"   |
| Balcony                   | 1.55m x 4.65m | 5'1" x 15'3"   |

PLOT 164  
TYPE I7  
2 BEDROOM APARTMENT

|                           |               |                |
|---------------------------|---------------|----------------|
| Kitchen / Dining / Living | 9.95m x 3.30m | 32'9" x 10'10" |
| Principal Bedroom         | 5.55m x 3.00m | 18'3" x 9'10"  |
| Bedroom 2                 | 5.25m x 3.25m | 17'3" x 10'9"  |
| Balcony 1                 | 1.55m x 3.30m | 5'1" x 10'9"   |
| Balcony 2                 | 1.55m x 3.15m | 5'1" x 10'5"   |

PLOTS 165, 166 & 167  
TYPE O2  
1 BEDROOM APARTMENT

|                           |               |               |
|---------------------------|---------------|---------------|
| Kitchen / Dining / Living | 7.75m x 3.20m | 25'5" x 10'7" |
| Bedroom                   | 4.90m x 3.25m | 16'0" x 10'7" |
| Balcony                   | 1.55m x 3.30m | 5'1" x 10'9"  |

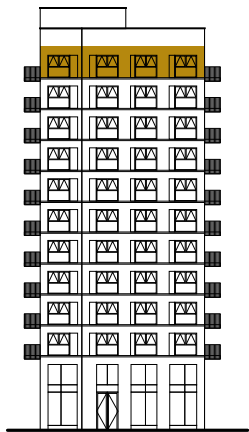
PLOT 168  
TYPE O9  
2 BEDROOM APARTMENT

|                           |               |               |
|---------------------------|---------------|---------------|
| Kitchen / Dining / Living | 4.00m x 5.80m | 13'2" x 19'0" |
| Principal Bedroom         | 3.50m x 3.85m | 11'6" x 12'7" |
| Bedroom 2                 | 4.20m x 2.65m | 13'9" x 8'9"  |
| Balcony                   | 1.55m x 4.65m | 5'1" x 15'3"  |

PLOT 169  
TYPE O5  
2 BEDROOM APARTMENT

|                           |               |               |
|---------------------------|---------------|---------------|
| Kitchen / Dining / Living | 4.10m x 5.85m | 13'5" x 19'3" |
| Principal Bedroom         | 3.20m x 3.80m | 10'7" x 12'6" |
| Bedroom 2                 | 4.30m x 2.95m | 14'1" x 9'9"  |
| Balcony                   | 1.55m x 4.65m | 5'1" x 15'3"  |

## SOUTH ELEVATION



## KEY

- One bedroom

● Two bedroom
- ↔ Measurements

W Wardrobe

C Cupboard

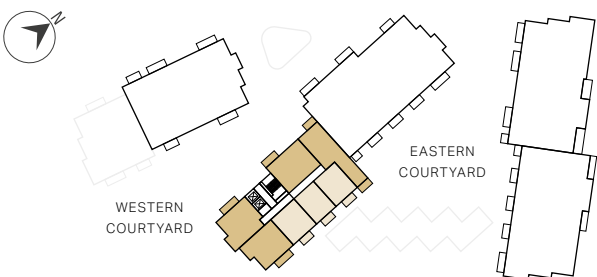
⋮ Indicative Wardrobe Position

US Utility Store

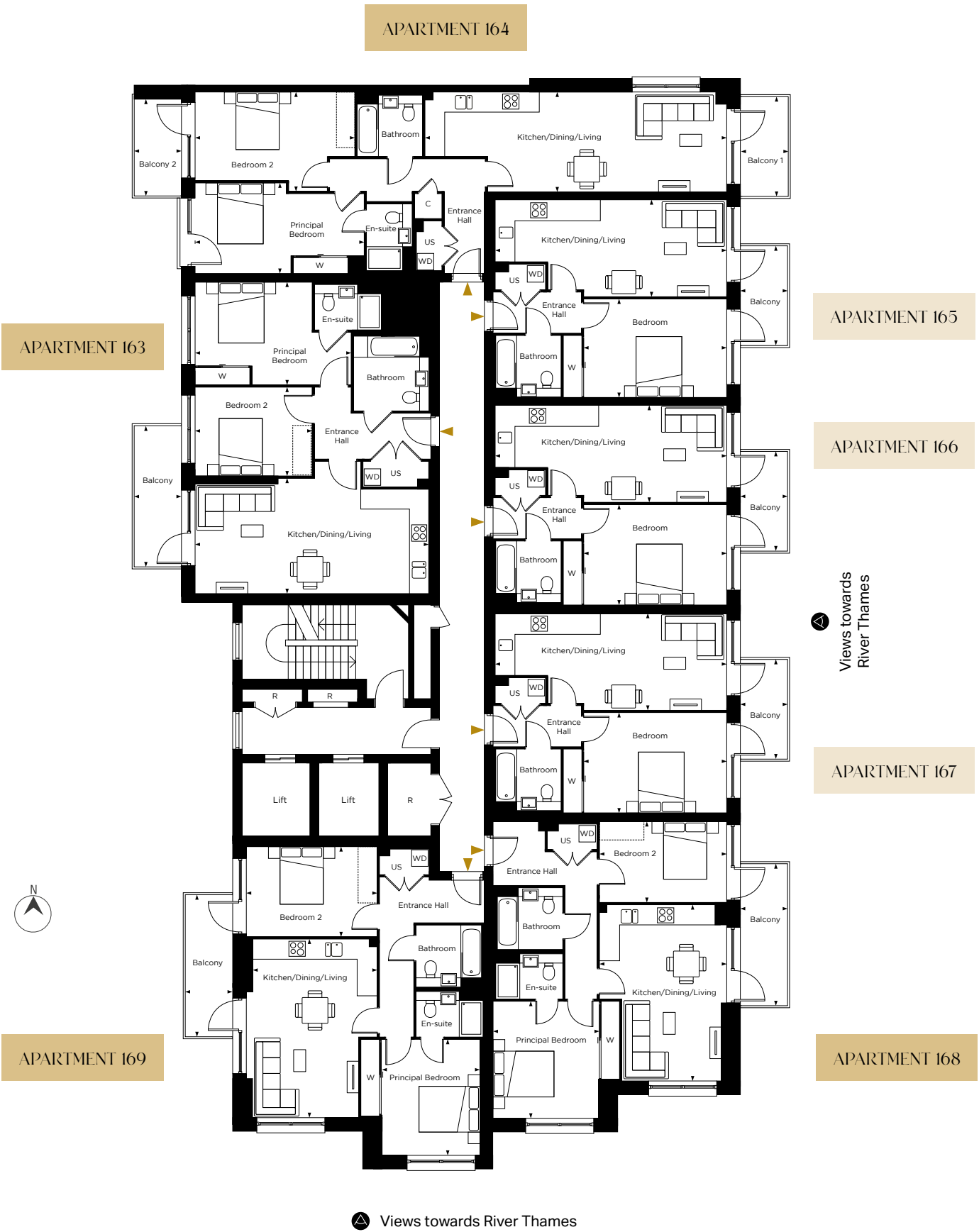
WD Washer Dryer

R Riser Cupboard

## WREN HOUSE



Apartment layouts provide approximate measurements only and are subject to planning. Dimensions, which are taken from the indicated points of measurements are for guidance only and are not intended to be used for window treatments or items of furniture. Bathroom and kitchen layouts are indicative only and are subject to change. Wardrobe size and position may vary. The information contained within this document does not constitute part of any offer, contract or warranty. Whilst the plans have been prepared with all due care for convenience of the intending purchaser, the information herein is a preliminary guide only.





# Internal Specification

It's the sum of little delights that adds up to a brilliant home. Immaculate fittings, an elegant colour palette, and warm lighting not only look great but make living here seamless.



Show home imagery is indicative only



Show home imagery is indicative only



Show home imagery is indicative only

## KITCHEN\*

- Matt finish handleless units with soft close to doors and drawers
- Caesarstone worktop with matching upstand and splashback behind hob
- Induction hob
- Integrated single oven
- Integrated microwave
- Integrated dishwasher
- Integrated fridge/freezer
- Integrated cooker hood
- Stainless steel undermounted sink with contemporary matt black mixer tap
- LED feature lighting to wall units
- Washer/dryer (freestanding in hallway cupboard)

## EN-SUITE

- White sanitaryware with contemporary matt black brassware
- Low profile shower tray with glass shower door
- Feature mirror cabinet and shelf with LED lighting
- Large format wall tiles
- Heated black towel rail

## BATHROOM

- White sanitaryware with contemporary matt black brassware
- Bath with shower over and glass screen
- Feature mirror cabinet and shelf with LED lighting
- Bath panel to match vanity tops
- Large format wall tiles
- Heated black towel rail

## DECORATIVE FINISHES

- Painted front entrance door with multi-point locking system
- High efficiency aluminium timber composite windows
- White painted flush internal doors with contemporary matt black ironmongery
- Built in mirrored wardrobe with sliding doors to principal bedroom
- Square cut skirting and architrave
- Walls painted in white emulsion
- Smooth ceilings in white emulsion

## FLOOR FINISHES

- Amtico flooring to entrance hall, kitchen/dining/living room, bathroom and en-suite
- Carpet to bedrooms

## HEATING AND WATER

- Underfloor heating throughout each apartment
- Electric heated towel rails to bathroom and en-suite
- Heating and hot water is provided via a communal hybrid air source heat pump/electric boiler system and metered to individual properties

## ELECTRICAL

- Downlights to entrance hall, kitchen/dining/living room, bathroom and en-suite
- Pendant fittings to all bedrooms
- Shaver sockets to bathroom and en-suite
- TV, BT and data points to selected locations
- BT & Virgin fibre connection to all properties for customer's choice of broadband provider
- Pre-wired for customer's own Sky Q connection
- Video entry system to every apartment, linked to main entrance door
- External lighting to balcony
- Hard-wired smoke and heat detectors
- Sprinkler system to all apartments
- Spur for customer's own installation of security alarm panel

\* Kitchen designs and layouts vary; please speak to our Sales Executives for further information.

We are unable to accommodate any individual changes, additions or amendments to the specification, layout or plans to any individual home. Please note that it may not be possible to obtain the exact products as referred to in the specification; in such cases a similar alternative will be provided. Hill reserve the right to make these changes as required.





Computer generated image is indicative only

# External Specification

## EXTERNAL FINISHES

- Aluminium decking to balcony

## COMMUNAL AREAS

- Fob controlled access system to entrance lobby
- Lift access to all floors
- Cycle and bin storage space
- Letterboxes provided for all apartments within communal entrance lobby

## AMENITIES

- Residents' podium gardens
- Gym
- Co-working space
- Concierge
- On-site nursery

## PARKING

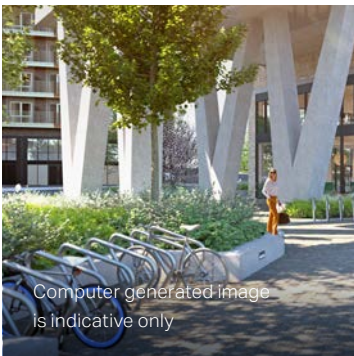
- Limited parking available at an additional cost
- Provision for electric charging points available to parking space owners

## CONSTRUCTION

- Reinforced concrete frame with outer brickwork, cavity filled with insulation
- Concrete floors
- Exterior treatments comprise white/grey facing bricks
- PV panels

## GENERAL

- 10 year NHBC warranty
- 990 year lease
- A service charge will be payable for the maintenance of the shared facilities and communal areas



Computer generated image is indicative only

We are unable to accommodate any individual changes, additions or amendments to the specification, layout or plans to any individual home. Please note that it may not be possible to obtain the exact products as referred to in the specification; in such cases a similar alternative will be provided. Hill reserve the right to make these changes as required. All residents will be required to contribute towards the cost of management and maintenance of the shared services and facilities at Kew Bridge Rise in the form of an annual service charge. This includes the private gym facilities, cleaning of the communal areas, building insurance, communal heating system and all general day-to-day maintenance.



Computer generated image is indicative only



# Contact us.



## SALES SUITE

Capital Interchange Way  
Brentford  
TW8 0EX

T 020 3906 1952  
W [kewbridgerise.co.uk](http://kewbridgerise.co.uk)  
E [hello@kewbridgerise.co.uk](mailto:hello@kewbridgerise.co.uk)



This brochure, and the description and measurements herein, do not form any part of a contract. Whilst every effort has been made to ensure accuracy, this cannot always be guaranteed. Site layouts, and specifications are taken from drawings which were correct at the time of print. The information and imagery contained in this brochure is for guidance purposes only and does not constitute a contract, part of contract or warranty. Images of the Kew Bridge Rise properties are computer generated and the landscaping may have been enhanced. Details correct at time of going to print.



Delivered in partnership

