

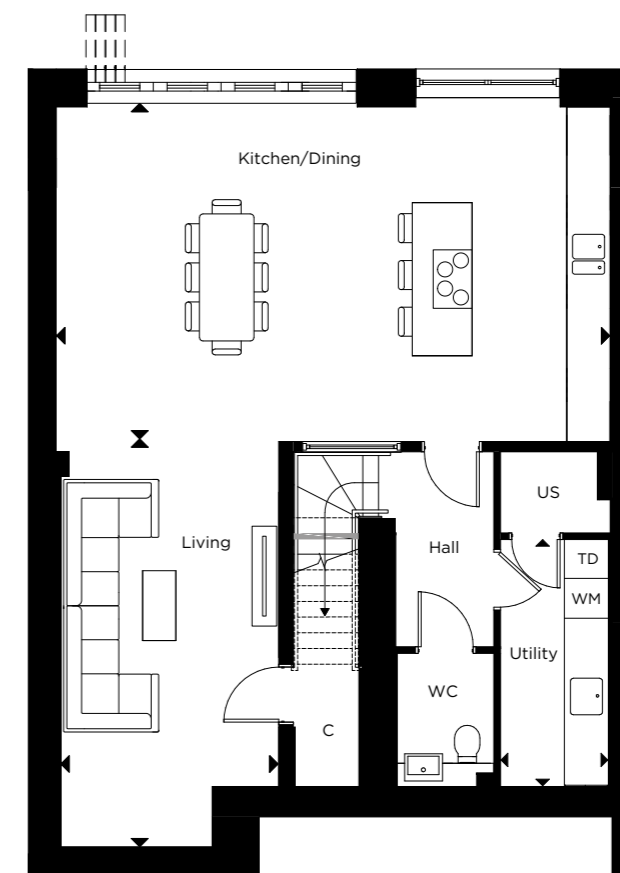
The Cornforth B

FOUR BEDROOM HOUSE
With integral garage
PLOTS 86, 88, 90, 92 & 94



GROUND FLOOR

FIRST FLOOR



LOWER GROUND FLOOR

LOWER GROUND FLOOR

Kitchen/Dining	8.30m x 5.00m	27'2" x 16'4"
Living	3.30m x 6.05m	10'9" x 19'10"
Utility	1.60m x 3.70m	5'2" x 12'1"

GROUND FLOOR

Family Room	4.60m x 5.20m	15'1" x 17'0"
Study	2.35m x 3.85m	7'8" x 12'7"
Garage	3.25m x 10.40m	10'7" x 34'1"

FIRST FLOOR

Principal Bedroom	4.60m x 3.80m	15'1" x 12'5"
Bedroom 2	3.20m x 5.15m	10'5" x 16'10"
Bedroom 3	3.20m x 3.40m	10'5" x 11'1"
Bedroom 4	2.45m x 3.25m	8'0" x 10'7"

*Handed to floorplan shown

C-CUPBOARD W-WARDROBE US-UTILITY STORE []-INDICATIVE WARDROBE POSITION
[WM]-WASHING MACHINE [TD]-TUMBLE DRYER [MVHR]-MECHANICAL VENTILATION WITH HEAT RECOVERY

Floorplan layouts are not to scale. House layouts provide approximate measurements only and are subject to planning. Dimensions, which are taken from the indicated points of measurements are for guidance only and are not intended to be used for window treatments or items of furniture. Bathroom and kitchen layouts are indicative only and are subject to change. Wardrobe size and position may vary. The information contained within this document does not constitute part of any offer, contract or warranty. Whilst the plans have been prepared with all due care for convenience of the intending purchaser, the information herein is a preliminary guide only.