

THE KESTREL

4 BEDROOM HOUSE
PLOTS 55 & 89*



Computer generated image of plot 55 is indicative only. External finishes may vary.

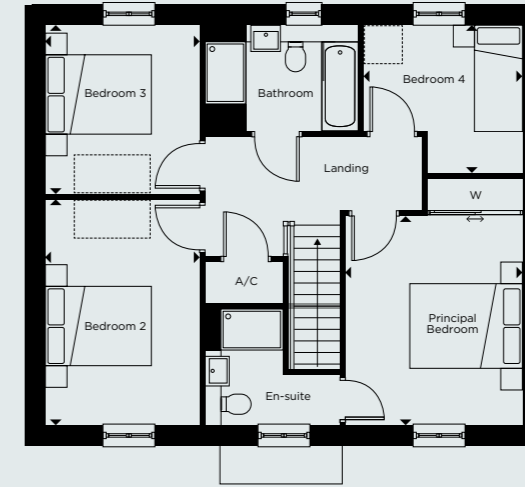
GROUND FLOOR

Kitchen/Dining	3.30m x 7.55m	10'9" x 24'9"
Living Room	4.05m x 5.20m	13'3" x 17'0"
Study	3.30m x 2.25m	10'9" x 7'4"
Utility	2.10m x 1.75m	6'10" x 5'8"
Garage	3.55m x 6.85m†	11'7" x 22'5"

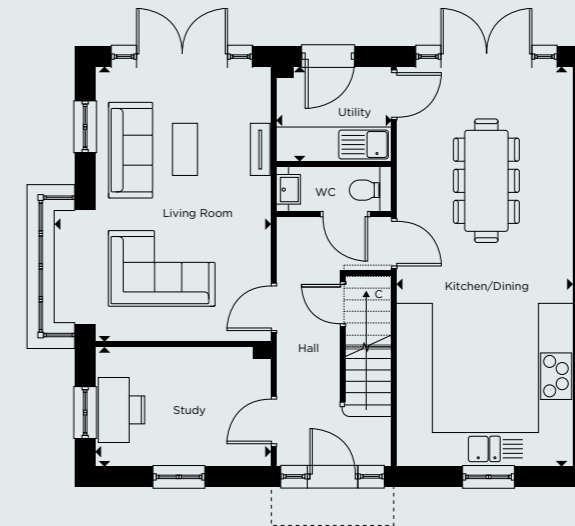
FIRST FLOOR

Principal Bedroom	3.35m x 3.95m	10'11" x 12'11"
Bedroom 2	2.90m x 4.25m	9'6" x 13'11"
Bedroom 3	2.90m x 3.20m	9'6" x 10'5"
Bedroom 4	3.00m x 2.80m	9'10" x 9'2"

*Handed to floorplan shown. †Plot 55 has garage length of 6m.



FIRST FLOOR



GROUND FLOOR

C - CUPBOARD W - WARDROBE A/C - AIRING CUPBOARD [---] - INDICATIVE WARDROBE POSITION

Floorplan layouts are not to scale. House layouts provide approximate measurements only and are subject to planning. Dimensions, which are taken from the indicated points of measurements are for guidance only and are not intended to be used for window treatments or items of furniture. Bathroom and kitchen layouts are indicative only and are subject to change. Wardrobe size and position may vary. The information contained within this document does not constitute part of any offer, contract or warranty. Whilst the plans have been prepared with all due care for convenience of the intending purchaser, the information herein is a preliminary guide only.