



Computer generated image of plot 42 and indicative only.

# The Brook

Four bedroom home

Plots: 3\*, 6\*, 14, 15, 18\*, 36, 41\*, 42, 44\*, 63\*, 71, 75, 98, 99, 100, 156, 157\*, 163

## Ground Floor

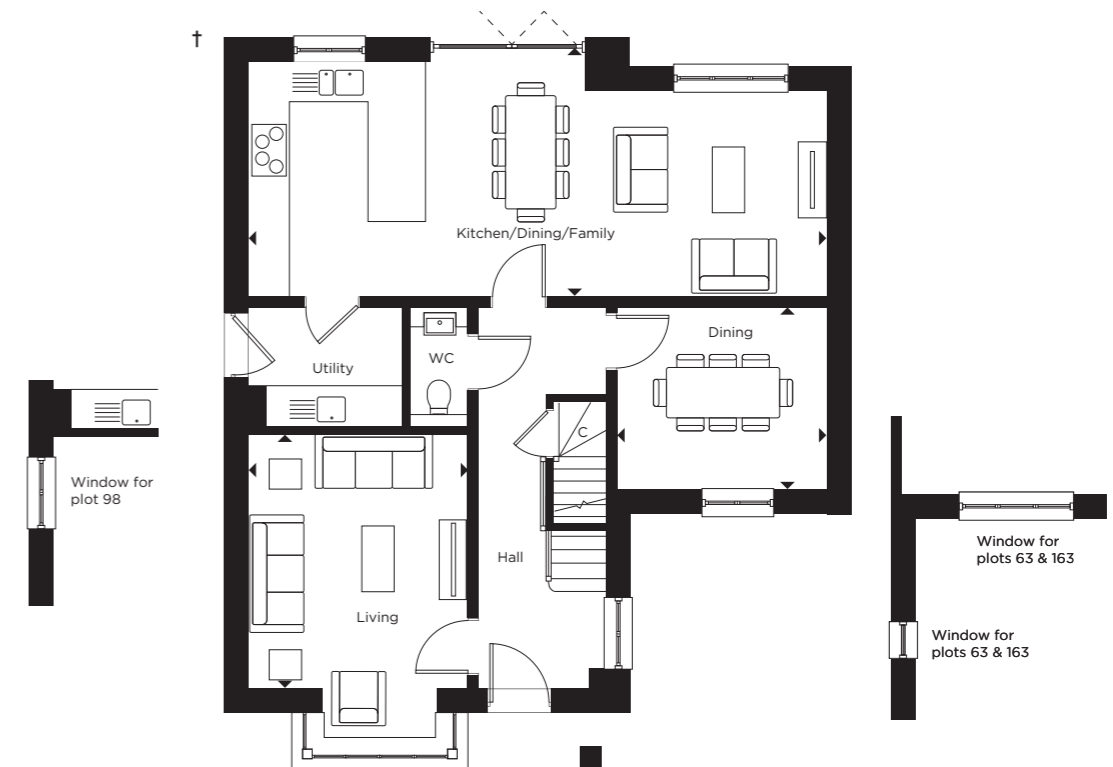
Kitchen/Dining/Family	9.10m x 3.70m   29'10" x 12'1"
Dining	3.30m x 2.85m   10'9" x 9'4"
Living	3.45m x 4.00m   11'3" x 13'1"

## First Floor

Principal Bedroom	3.35m x 3.85m   10'11" x 12'7"
Bedroom 2	3.30m x 3.55m   10'9" x 11'7"
Bedroom 3	4.45m x 3.10m   14'7" x 10'2"
Bedroom 4	4.45m x 3.10m   14'7" x 10'2"



First Floor



Ground Floor

ASHP = Air Source Heat Pump Cylinder | C = Cupboard | W = Wardrobe  
WC = Cloakroom | [ ] = Indicative wardrobe position

\*Denotes handed plot. All floorplans are not to scale. †Garage attached to plots 3, 6, 14, 15, 41, 42, 71, 75, 98, 99, 100 & 157. Layouts provide approximate measurements only and are subject to planning. Dimensions, which are taken from the indicated points of measurement, are for guidance only and are not intended to be used for window treatments or items of furniture. Bathroom and kitchen layouts are indicative only and are subject to change. Wardrobe size and position may vary. The information contained within this document does not constitute part of any offer, contract or warranty. Whilst the plans have been prepared with all due care for the convenience of the intending purchaser, the information contained herein is a preliminary guide only. Exterior treatments may vary, please speak to a Sales Executive for more information.