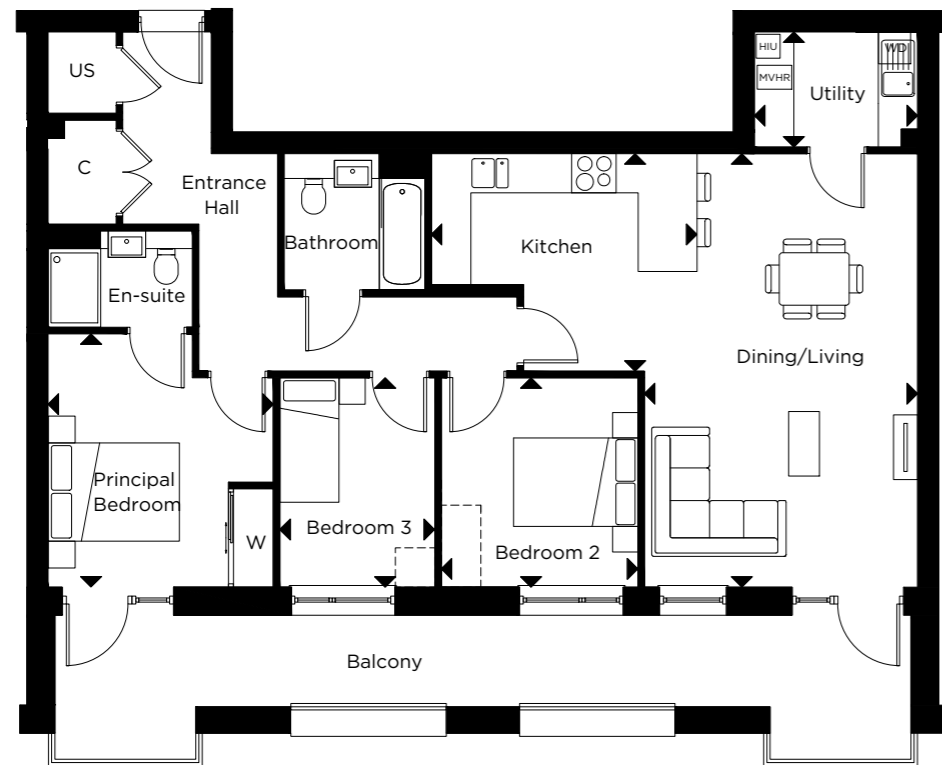


# The Penrose

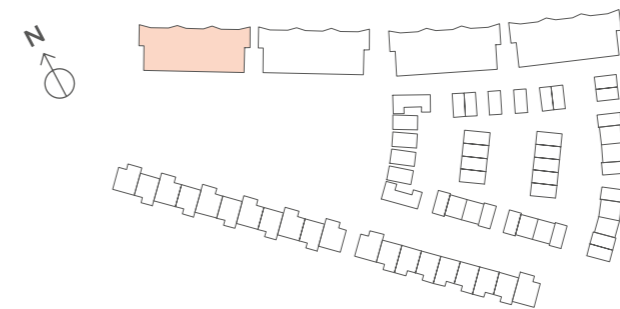
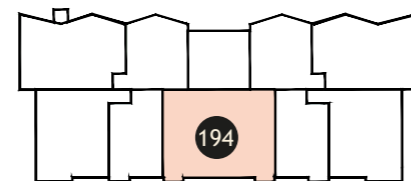
## Apartment 194

3 BEDROOM – GROUND FLOOR



### 194 – 3 BEDROOM APARTMENT

Kitchen	3.30m x 4.05m	10'8" x 13'3"
Dining/Living	6.60m x 4.15m	21'7" x 13'6"
Utility	1.75m x 2.45m	5'7" x 8'0"
Principal Bedroom	3.85m x 3.40m	12'6" x 11'2"
Bedroom 2	3.20m x 3.00m	10'5" x 7'7"
Bedroom 3	3.20m x 2.35m	10'5" x 9'8"



C-CUPBOARD W-WARDROBE R-RISER CUPBOARD US-UTILITY STORE -INDICATIVE WARDROBE POSITION -WHEELCHAIR ACCESSIBLE

-WASHER/DRYER -HEAT INTERFACE UNIT -MECHANICAL VENTILATION WITH HEAT RECOVERY

Apartment layouts provide approximate measurements only and are subject to planning. Dimensions, which are taken from the indicated points of measurements are for guidance only and are not intended to be used for window treatments or items of furniture. Bathroom and kitchen layouts are indicative only and are subject to change. Wardrobe size and position may vary. The information contained within this document does not constitute part of any offer, contract or warranty. Whilst the plans have been prepared with all due care for convenience of the intending purchaser, the information herein is a preliminary guide only.