

# The Florey

FIVE BEDROOM HOUSE

With integral garage

PLOTS 85, 87, 89, 91, 93 & 95\*



## LOWER GROUND FLOOR

Kitchen	5.15m x 3.90m	16'9" x 12'9"
Dining/Living	8.75m x 4.75m	28'8" x 15'6"

## FIRST FLOOR

Principal Bedroom	5.25m x 4.10m	17'2" x 13'5"
Bedroom 2	3.60m x 3.20m	11'9" x 10'5"
Terrace	11.25m x 5.70m	36'10" x 18'8"

## GROUND FLOOR

Family Room	5.25m x 4.00m	17'2" x 13'1"
Study	3.90m x 3.10m	12'9" x 10'2"
Garage	10.15m x 3.25m	33'3" x 10'7"

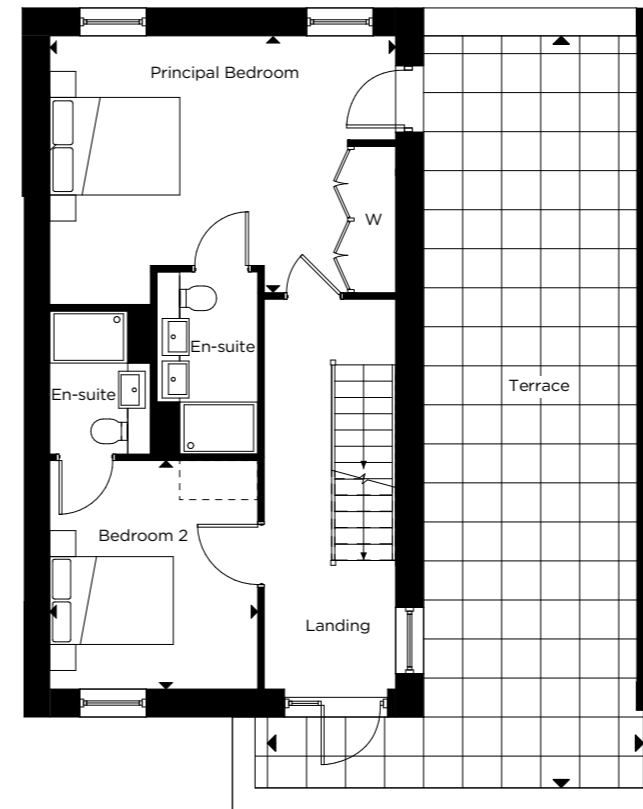
## SECOND FLOOR

Bedroom 3	4.50m x 2.85m	14'9" x 9'4"
Bedroom 4	3.20m x 3.20m	10'5" x 10'5"
Bedroom 5	2.30m x 3.30m	7'6" x 10'9"

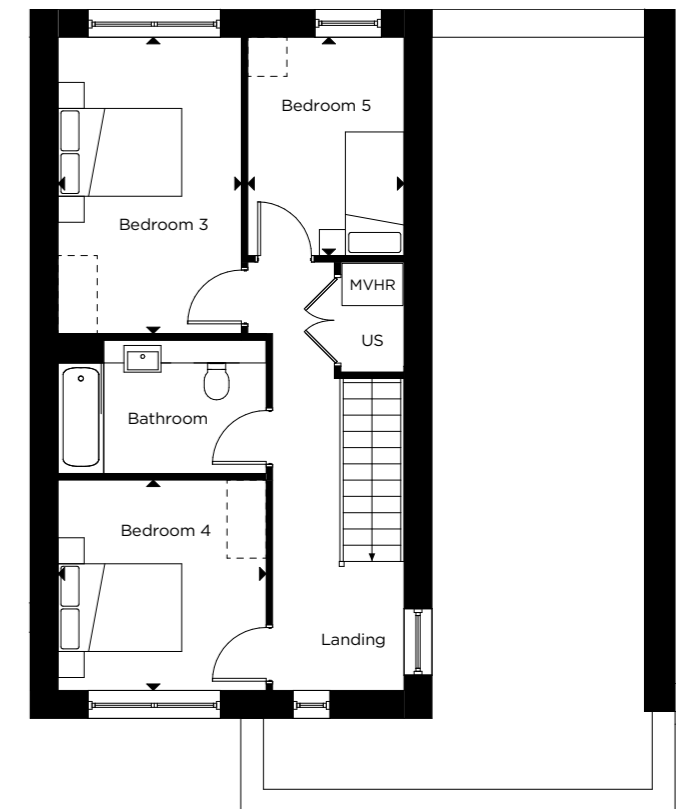
\*Handed to floorplan shown

C-CUPBOARD W-WARDROBE US-UTILITY STORE -INDICATIVE WARDROBE POSITION

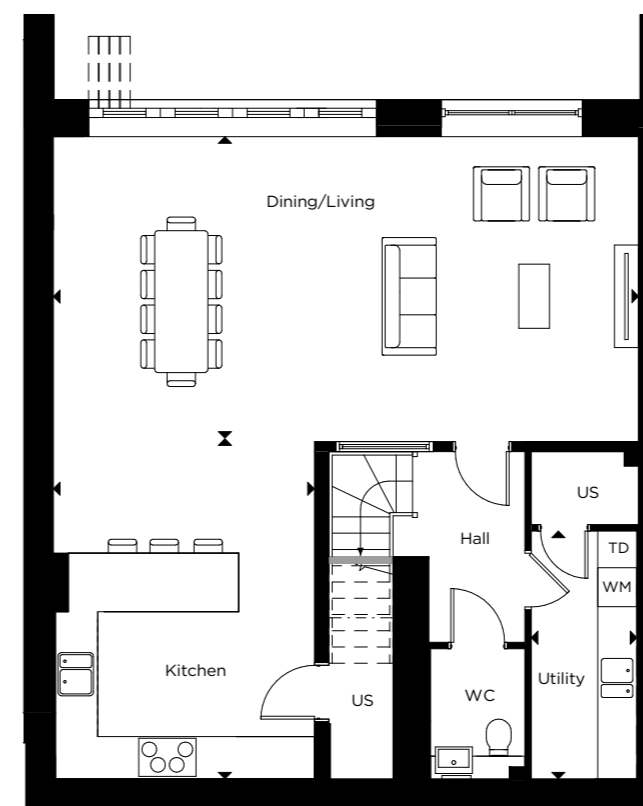
-WASHING MACHINE -TUMBLE DRYER -MECHANICAL VENTILATION WITH HEAT RECOVERY



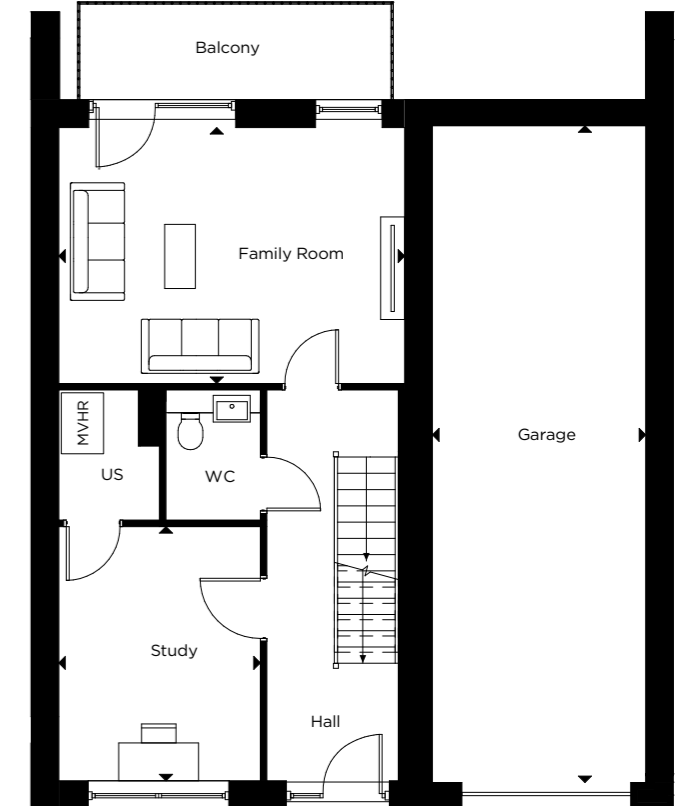
FIRST FLOOR



SECOND FLOOR



LOWER GROUND FLOOR



GROUND FLOOR

Floorplan layouts are not to scale. House layouts provide approximate measurements only and are subject to planning. Dimensions, which are taken from the indicated points of measurements are for guidance only and are not intended to be used for window treatments or items of furniture. Bathroom and kitchen layouts are indicative only and are subject to change. Wardrobe size and position may vary. The information contained within this document does not constitute part of any offer, contract or warranty. Whilst the plans have been prepared with all due care for convenience of the intending purchaser, the information herein is a preliminary guide only.