

The Cornforth

FOUR BEDROOM HOUSE

With integral garage

PLOTS 77, 78*, 79, 80*, 81, 82*, 83, 86, 88, 90, 92 & 94



Computer Generated Image of plots 78 & 79 is indicative only.

LOWER GROUND FLOOR

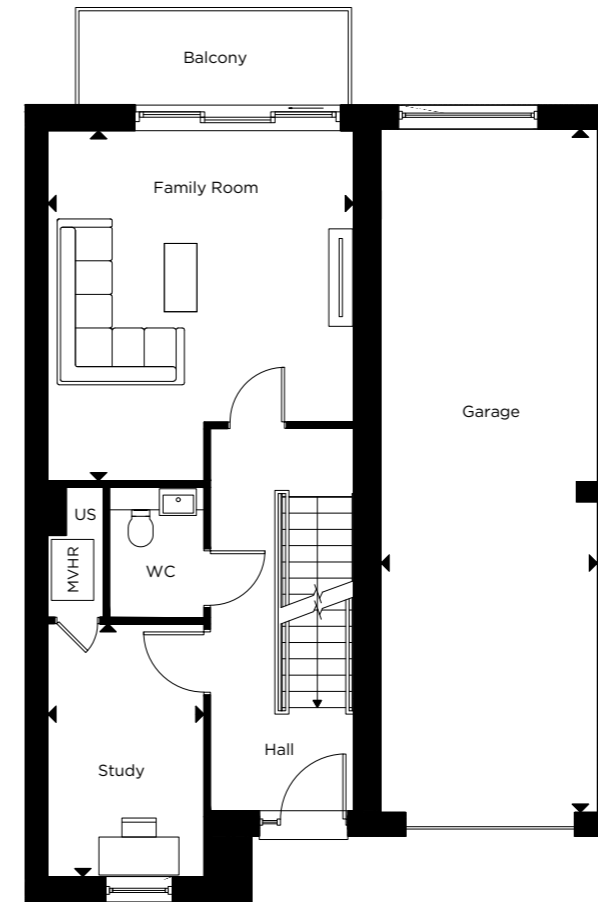
Kitchen/Dining	8.40m x 5.15m	27'6" x 16'10"
Living	6.10m x 3.40m	20'0" x 11'1"

GROUND FLOOR

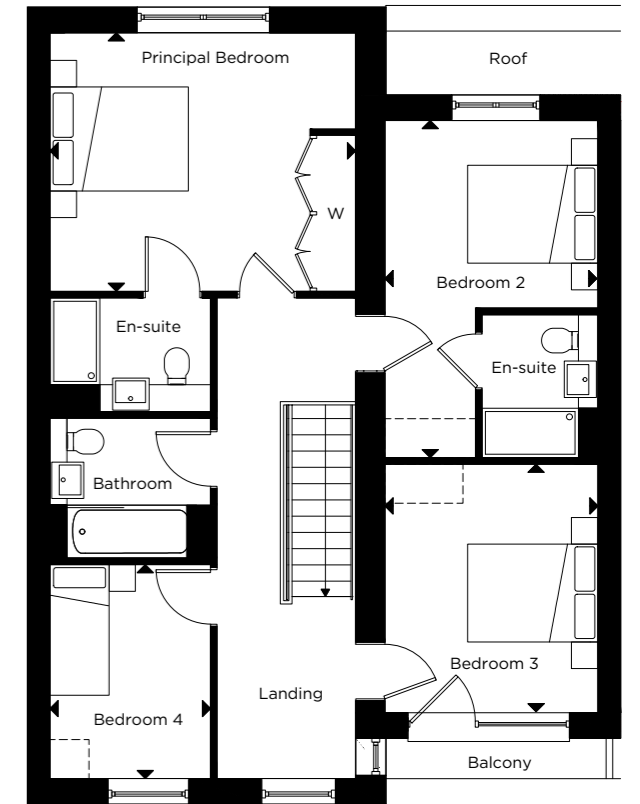
Family Room	5.35m x 4.70m	17'6" x 15'5"
Study	3.85m x 2.40m	12'7" x 7'10"
Garage	10.50m x 3.30m	34'5" x 10'9"

FIRST FLOOR

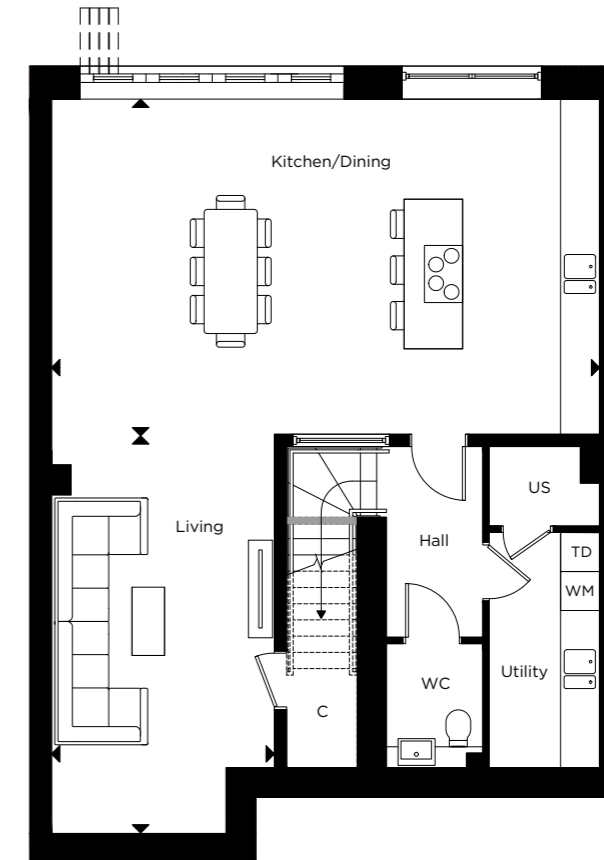
Principal Bedroom	4.70m x 3.95m	15'5" x 12'11"
Bedroom 2	5.15m x 3.25m	16'10" x 10'7"
Bedroom 3	3.80m x 3.25m	12'5" x 10'7"
Bedroom 4	3.25m x 2.45m	10'7" x 8'0"



GROUND FLOOR



FIRST FLOOR



LOWER GROUND FLOOR

*Handed to floorplan shown

C-CUPBOARD W-WARDROBE US-UTILITY STORE [---] INDICATIVE WARDROBE POSITION

[WM]-WASHING MACHINE [TD]-TUMBLE DRYER [MVHR]-MECHANICAL VENTILATION WITH HEAT RECOVERY

Floorplan layouts are not to scale. House layouts provide approximate measurements only and are subject to planning. Dimensions, which are taken from the indicated points of measurements are for guidance only and are not intended to be used for window treatments or items of furniture. Bathroom and kitchen layouts are indicative only and are subject to change. Wardrobe size and position may vary. The information contained within this document does not constitute part of any offer, contract or warranty. Whilst the plans have been prepared with all due care for convenience of the intending purchaser, the information herein is a preliminary guide only.