

The Crescent

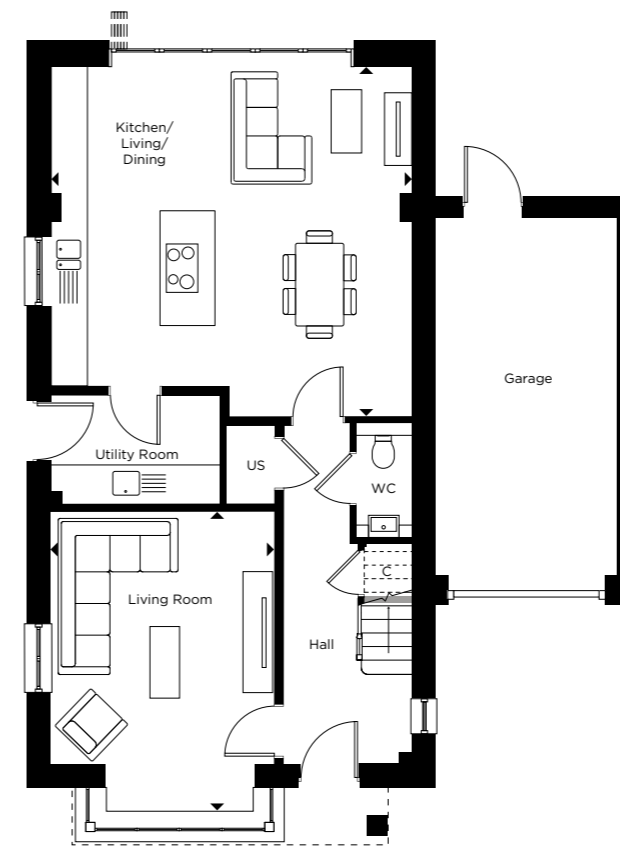
SEMI-DETACHED HOUSE

4 BEDROOM

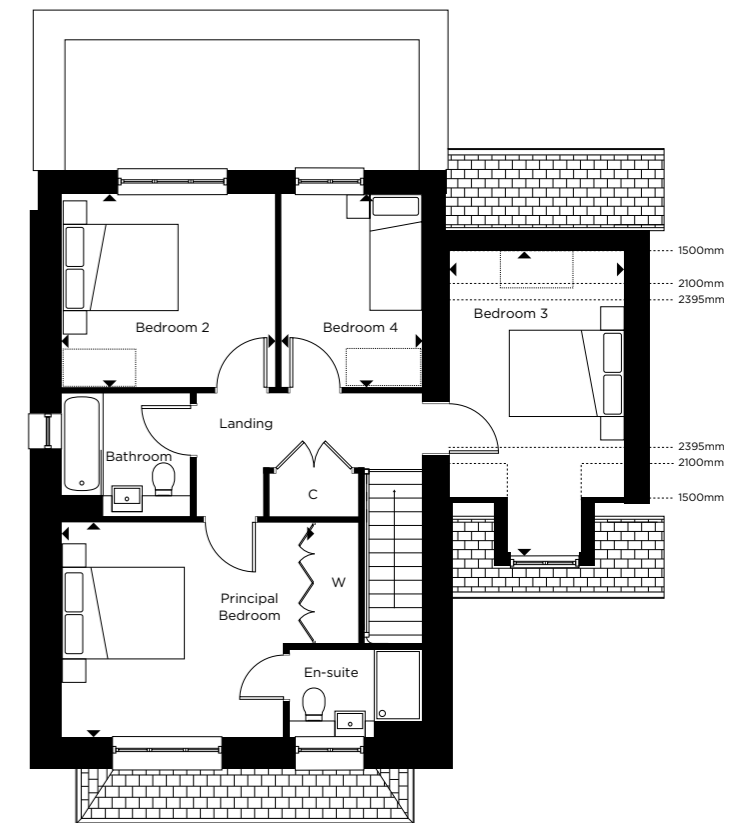
PLOTS: 30, 31', 61, 62'



Computer generated image is indicative of plots 30 (partial tile) & 31 (brick).



Ground floor



First floor

Ground floor

Kitchen/Living/Dining
5.95m x 5.85m | 19'5" x 19'2"

Living Room
4.95m x 3.70m | 16'2" x 12'1"

First floor

Principal Bedroom
4.15m x 3.55m | 13'6" x 11'6"

Bedroom 2
3.55m x 3.20m | 11'7" x 10'4"

Bedroom 3
5.00m x 2.85m | 16'4" x 9'3"

Bedroom 4
3.20m x 2.30m | 10'5" x 7'5"

C = Cupboard | US = Utility Store | W = Wardrobe

..... = Restricted head height | - - - - = Indicative porch position | □ = Indicative wardrobe position

*Denotes handed plot. Partial tiles to exterior applies to plots 61 & 62. All floorplans are not to scale. Layouts provide approximate measurements only and are subject to planning. Dimensions, which are taken from the indicated points of measurement, are for guidance only and are not intended to be used for window treatments or items of furniture. Bathroom and kitchen layouts are indicative only and are subject to change. Wardrobe size and position may vary. The information contained within this document does not constitute part of any offer, contract or warranty. Whilst the plans have been prepared with all due care for the convenience of the intending purchaser, the information contained herein is a preliminary guide only.