

THE ASPEN B

PLOTS 6*, 12, 23*, 24*, 26 & 31

3 BEDROOM DETACHED HOUSE



GROUND FLOOR

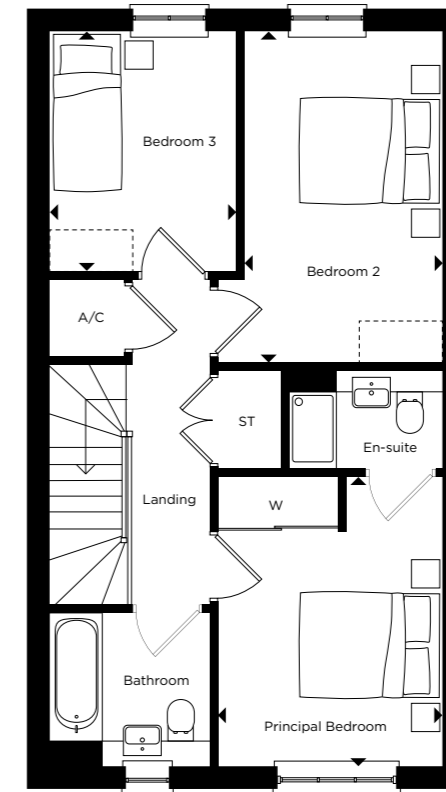
Kitchen / Dining Room	2.75m x 5.40m	9'0" x 17'8"
Living Room	5.05m x 4.25m	16'6" x 13'11"

FIRST FLOOR

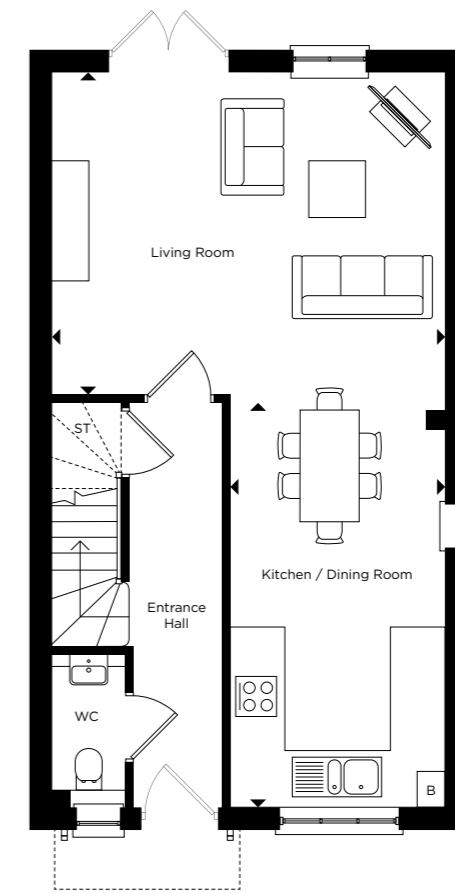
Principal Bedroom	2.90m x 3.80m	9'6" x 12'5"
Bedroom 2	2.60m x 4.40m	8'6" x 14'5"
Bedroom 3	2.35m x 3.20m	7'8" x 10'5"

*Plots 6, 23 & 24 are handed to floor plans shown. Measurements are maximum dimensions. Exterior treatments may vary, please speak to a sales advisor for more information.

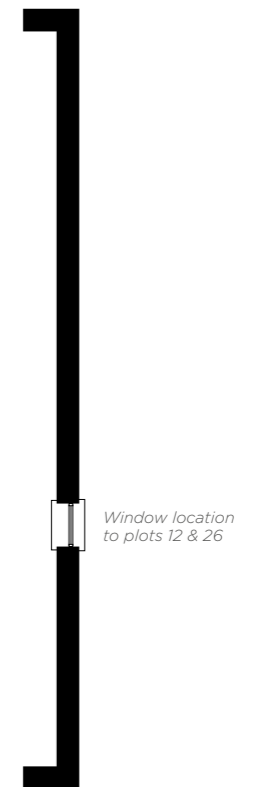
Layouts provide approximate measurements only and are subject to planning. Dimensions, which are taken from the indicated points of measurement, are for guidance only and are not intended to be used for window treatments or items of furniture. Bathroom and kitchen layouts are indicative only and are subject to change. Wardrobe size and position may vary. The information contained within this document does not constitute part of any offer, contract or warranty. Whilst the plans have been prepared with all due care for the convenience of the intending purchaser, the information contained herein is a preliminary guide only.



FIRST FLOOR



GROUND FLOOR



ST - Storage Cupboard W - Wardrobe B - Boiler A/C - Airing Cupboard - Indicative Wardrobe Location