

Capstone  
Fields HARDWICK

# The Millburn

4 Bedroom Detached House

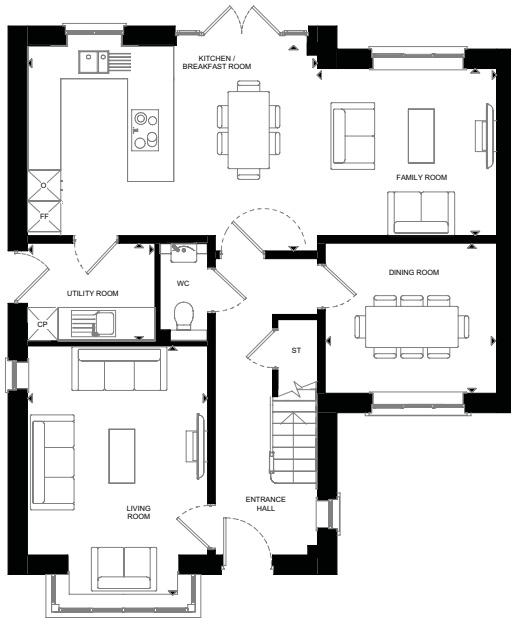
Plots 128, 133, 136, 140, 147 & 155



Plot 133



Computer generated image is for indicative purposes only.  
Exterior finishes may vary. Please speak to the sales team for more information.



## Ground Floor

### Kitchen/Breakfast Room

5.65m x 4.00m | 18'6" x 13'1"

### Living Room

3.50m x 4.85m | 11'5" x 15'10"

### Dining Room

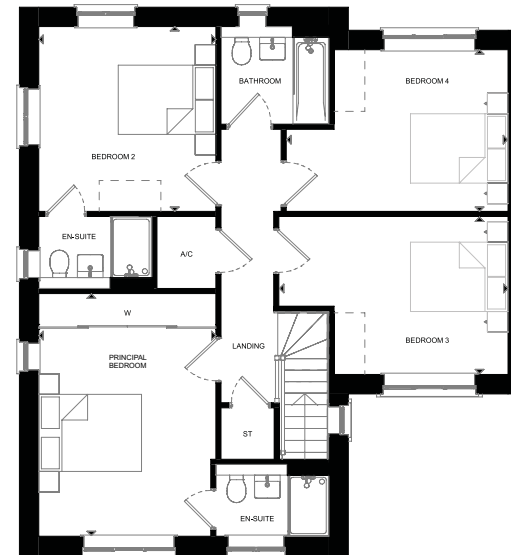
3.30m x 2.90m | 10'9" x 9'6"

### Family Room

3.50m x 3.25m | 11'5" x 10'8"

### Utility Room

2.45m x 1.90m | 8'0" x 6'2"



## First Floor

### Principal Bedroom

3.45m x 4.70m | 11'3" x 15'5"

### Bedroom 2

3.45m x 3.60m | 11'3" x 11'9"

### Bedroom 3

4.45m x 3.05m | 14'7" x 10'0"

### Bedroom 4

4.30m x 3.15m | 14'1" x 10'4"

A/C – Airing Cupboard CP – Full-height Cupboard (boiler location) FF – Fridge/Freezer O – Tall Oven Unit ST – Storage Cupboard W – Built-in Wardrobe  
--- – Wardrobe Position WC – Cloakroom

Plot 136 is handed. All plots have a detached double garage.

Layouts provide approximate measurements only and are subject to planning. Dimensions, which are taken from the indicated points of measurement, are for guidance only and are not intended to be used for window treatments or items of furniture. Bathroom and kitchen layouts are indicative only and are subject to change. Wardrobe size and position may vary. The information contained within this document does not constitute part of any offer, contract or warranty. Whilst the plans have been prepared with all due care for the convenience of the intending purchaser, the information contained herein is a preliminary guide only. September 2021.