

Capstone Fields HARDWICK

The Elsworth

4 Bedroom Detached House

Plots 1, 7, 16, 30, 65, 104, 106, 135, 138, 141,
142, 145, 146, 148 & 154



Plot 154

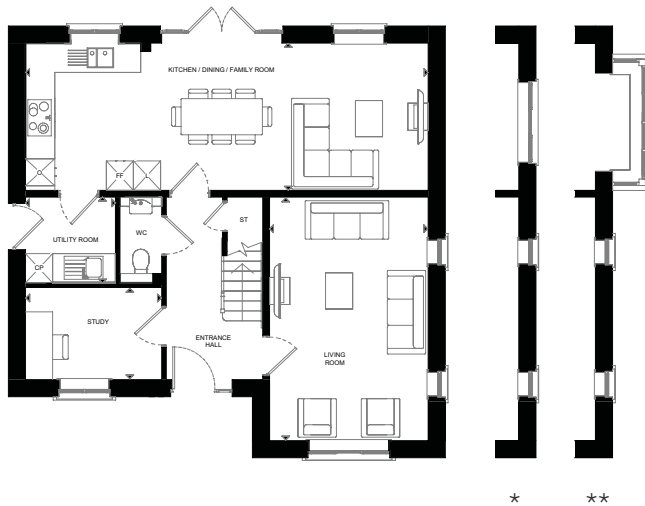


Computer generated image is for indicative purposes only.
Exterior finishes may vary. Please speak to the sales team for more information.

The Elsworth

4 Bedroom Detached House

Plots 1, 7, 16, 30, 65, 104, 106, 135, 138, 141, 142, 145, 146, 148 & 154



Ground Floor

Kitchen/Dining/Family Room

8.90m x 3.25m | 29'2" x 10'8"

Living Room

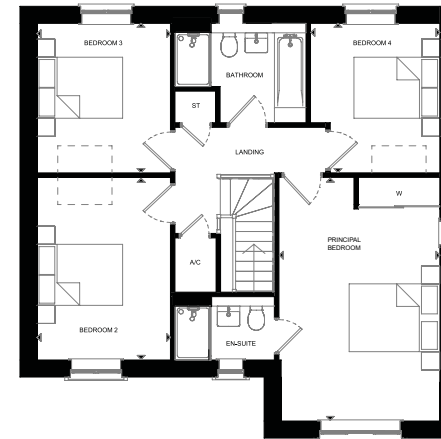
3.50m x 5.35m | 11'5" x 17'6"

Study

3.00m x 2.00m | 9'10" x 6'6"

Utility Room

2.00m x 1.90m | 6'6" x 6'2"



First Floor

Principal Bedroom

3.55m x 5.35m | 11'7" x 17'6"

Bedroom 2

2.95m x 4.00m | 9'8" x 13'1"

Bedroom 3

2.95m x 3.30m | 9'8" x 10'9"

Bedroom 4

2.85m x 3.30m | 9'4" x 10'9"

A/C – Airing Cupboard CP – Full-height Cupboard (boiler location) FF – Fridge/Freezer L – Larder Unit O – Tall Oven Unit ST – Storage Cupboard W – Built-in Wardrobe
 --- – Wardrobe Position WC – Cloakroom

Plots 1, 16, 30, 106, 138, 141 & 148 are handed. Plots 1 & 16 have a detached double garage. Remaining plots have a detached single garage. *Side window to plots 7, 16, 30, 138 & 146. **Bay window to plots 1, 104, 106 & 142.

Layouts provide approximate measurements only and are subject to planning. Dimensions, which are taken from the indicated points of measurement, are for guidance only and are not intended to be used for window treatments or items of furniture. Bathroom and kitchen layouts are indicative only and are subject to change. Wardrobe size and position may vary. The information contained within this document does not constitute part of any offer, contract or warranty. Whilst the plans have been prepared with all due care for the convenience of the intending purchaser, the information contained herein is a preliminary guide only. September 2021.