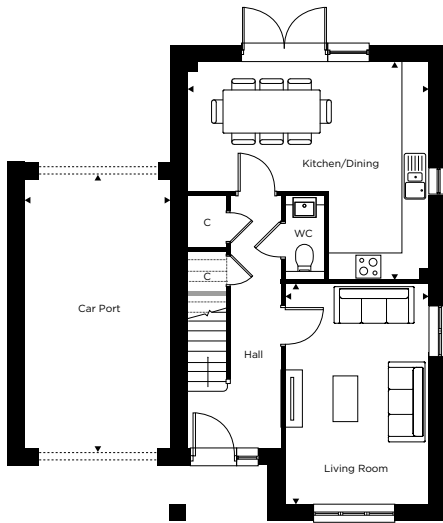


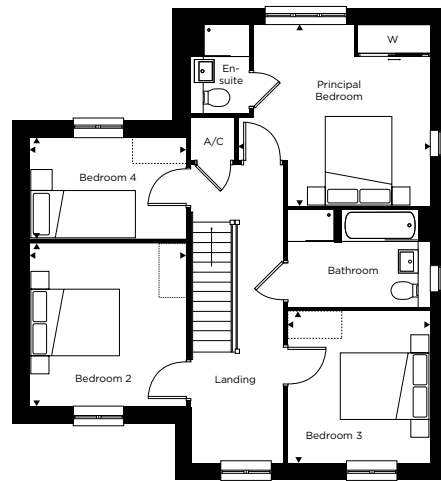
THE YARE

FOUR BEDROOM HOUSE

LINK-DETACHED: PLOTS 50, 88*, 112*, 113, 115, 122 & 133*



GROUND FLOOR



FIRST FLOOR



Exterior finishes may vary, speak to the sales team for more information. Computer generated image of plot 115 The Yare is indicative only.

Ground Floor

Kitchen/Dining
5.30m x 4.75m 17'4" x 15'7"

Living Room
3.15m x 4.80m 10'4" x 15'8"

Car Port
3.15m x 6.00m 10'4" x 19'8"

First Floor

Principal Bedroom
4.25m x 4.00m 13'11" x 13'1"

Bedroom 2
3.45m x 3.60m 11'3" x 11'9"

Bedroom 3
3.15m x 3.30m 10'4" x 10'9"

Bedroom 4
3.45m x 2.25m 11'3" x 7'4"

*Handed to floorplan shown

C = Cupboard W = Wardrobe A/C = Airing Cupboard □ = Indicative wardrobe position

All floorplans are not to scale. Layouts provide approximate measurements only and are subject to planning. Dimensions, which are taken from the indicated points of measurement, are for guidance only and are not intended to be used for window treatments or items of furniture. Bathroom and kitchen layouts are indicative only and are subject to change. Wardrobe size and position may vary. The information contained within this document does not constitute part of any offer, contract or warranty. Whilst the plans have been prepared with all due care for the convenience of the intending purchaser, the information contained herein is a preliminary guide only.

