

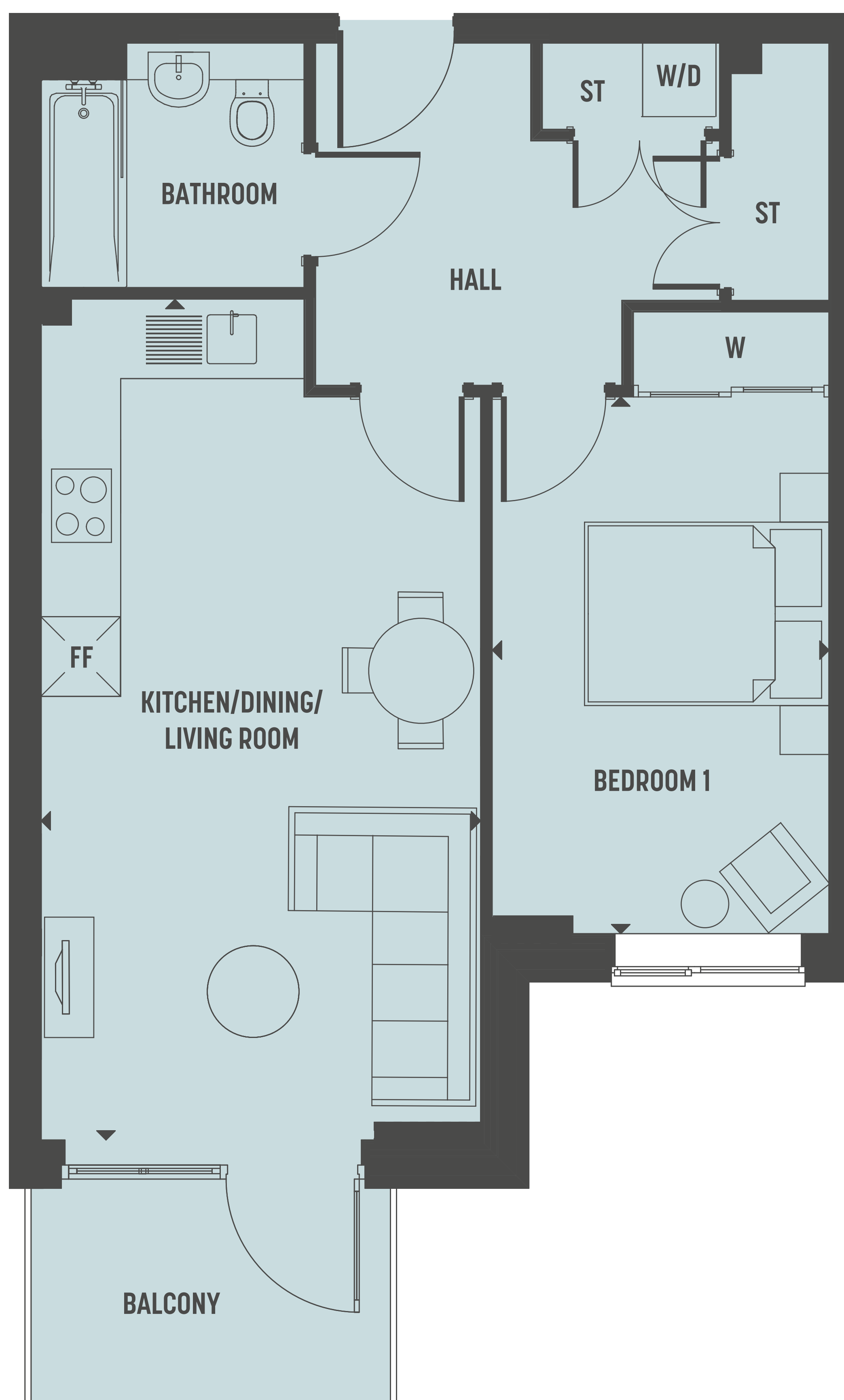
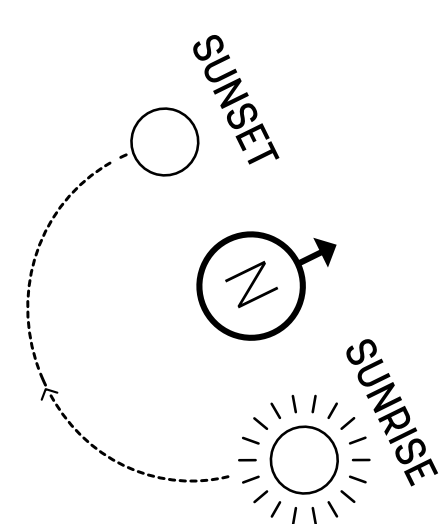
# THE CHERRY BLOSSOM BUILDING

**TIMBER  
WORKS**

CROMWELL ROAD - ROMSEY CB1

**PLOT E31 - 1 BEDROOM**

**FOURTH FLOOR**



| <b>PLOT E31 - 1 BEDROOM</b> | M           | FT           |
|-----------------------------|-------------|--------------|
| KITCHEN/DINING/LIVING ROOM  | 3.59 X 6.87 | 11'9 X 22'10 |
| BEDROOM 1                   | 2.75 X 4.38 | 9'0 X 14'4   |

W = WARDROBE  
 W/D = WASHER DRYER  
 ST = STORAGE  
 ▶ = MEASURING POINTS  
 FF = FRIDGE FREEZER

