



# LAMPTON PARKSIDE

WEST LONDON TW3

## GREEN SQUARE

A collection of studio,  
1, 2 and 3 bedroom apartments and  
2 and 3 bedroom duplexes



LAMPTON  
PARKSIDE

WEST LONDON TW3

# INTRODUCING GREEN SQUARE

A COLLECTION OF STYLISH, MODERN HOMES  
COMPRISING STUDIO, 1, 2 AND 3 BEDROOM  
APARTMENTS, AND 2 AND 3 BEDROOM DUPLEXES,  
ALL WITH THEIR OWN PRIVATE OUTDOOR SPACE.

Ideally located at Lampton Parkside, these homes combine  
a beautiful green setting next to 40 acres of parkland,  
with all the amenities, opportunities and connections of  
London living. It is a place where you can savour the city,  
delight in nature and live life with more vitality.





# AN UPLIFTING PARKSIDE LOCATION

ENJOY LIVING IN A FLOURISHING COMMUNITY, WHERE YOU CAN  
EMBRACE A HAPPY, HEALTHY AND REFRESHING LIFESTYLE.

Green Square benefits from a prime position next to Lampton Park, with some homes enjoying leafy parkland views. Designed around a raised central garden, with car parking located underneath, these homes offer plenty of opportunities to connect with the outside. All have balconies or terraces, while some duplexes have their own garden too. There are also two sky gardens, the perfect place to relax as the sun sets over London.

Ample cycle storage is provided on the ground floor of Green Square, so that you can travel by bicycle easily and conveniently.

A concierge service, conveniently located on the ground floor of the neighbouring block, provides a 12 hour a day, 7 day a week service and is available to all apartments. From handling your dry cleaning to receiving deliveries whilst you away, this personal service is here to make life at Lampton Parkside even easier.

Attractive gardens, landscaping and leafy streets create a welcoming environment, where residents can pause, meet and form friendships. Neighbouring Lampton Park features 40 acres of green space, with sports fields, tennis courts, bowling green, playground, wooded areas and historic rose garden. And with Hounslow's tube station just a four-minute walk and town centre less than half a mile away, you have everything you need on your doorstep.









# APARTMENTS AND DUPLEXES SPECIFICATION

APARTMENTS AND DUPLEXES ARE LIGHT, COMFORTABLE  
AND BEAUTIFULLY FINISHED, WITH FLEXIBLE SPACES WHERE  
YOU CAN WORK, RELAX, SOCIALISE AND ENTERTAIN.



Computer generated image of Green Square apartment G1.29 is indicative only.

## KITCHEN

- Matt finish handleless units with soft close to doors and drawers
- Caesarstone worktop with matching upstands and splashback behind hob
- Induction hob
- Integrated single oven
- Integrated microwave
- Integrated compact combi oven/ microwave (to studios)
- Integrated dishwasher
- Integrated fridge/freezer or fridge with freezer compartment to studios
- Integrated cooker hood
- Stainless steel undermounted sink with contemporary brushed steel mixer tap
- LED feature lighting to wall units
- Washer/dryer (freestanding in hallway cupboard)

Kitchen designs and layouts vary; please speak to our Sales Executives for further information

## EN-SUITE

- Low profile shower tray with glass shower door
- Feature mirror with shelf to match vanity top (where layout allows)
- Heated chrome towel rail

## BATHROOM

- Bath with shower over and glass screen
- Bath panel to match vanity top
- Feature mirror with shelf (where layout allows)
- Heated chrome towel rail

## DECORATIVE FINISHES

- Painted front entrance door with multi-point locking system
- High efficiency double glazed aluminium timber composite windows
- Timber staircase with carpeted treads and risers to duplexes
- White painted flush internal doors with contemporary dual finish ironmongery

- Built in mirrored wardrobe with sliding doors to principal bedroom
- Square cut skirting and architrave
- Walls painted in white emulsion
- Smooth ceilings in white emulsion

## FLOOR FINISHES

- Amtico flooring to entrance hall, kitchen/living/dining room, bathroom, en-suite and WC, lower floor living rooms to duplexes and throughout studios
- Carpet to bedrooms, upper floor living room, stairs and landing to duplexes

## HEATING AND WATER

- Underfloor heating throughout each apartment
- Heated chrome towel rails to bathroom and en-suite
- Heating via communal heating plant

## ELECTRICAL

- Downlights to entrance hall, kitchen/living/dining room, kitchen/dining room, bathroom, en-suite and WC
- Pendant fittings to separate living room and all bedrooms
- LED feature lighting to wall units in kitchen
- Shaver sockets to bathroom and en-suite
- TV, BT and data points to selected locations
- Wiring for customer's own broadband connection
- Pre-wired for customer's own Sky Q connection
- Video entry system to every apartment accessed from communal core, linked to main entrance door
- External lighting to balcony/terrace
- Hard-wired smoke and heat detectors
- Sprinkler system to all apartments
- Spur for customer's own installation of security alarm panel

## EXTERNAL FINISHES

- Porcelain tiles to balconies
- Private terraces to first floor apartments and duplexes, with artificial turf and/or paving

## COMMUNAL AREAS

- Fob controlled access system to entrance lobby where apartments accessed off communal core
- Lift access to all floors where accessed off main communal core
- Cycle and bin storage space
- Letterboxes provided within communal entrance lobby
- Communal roof terraces

## PARKING

- Allocated parking space available to selected plots
- Electric car charging points available to selected parking spaces

## CONSTRUCTION

- Steel reinforced concrete frame with outer brickwork, cavity filled with insulation
- Concrete floors
- Exterior treatments are a combination of buff, brown and red facing bricks with biodiverse roofs

## GENERAL

- 10 year NHBC warranty
- 999 year lease
- A service charge will be payable for the maintenance of the shared facilities and communal areas

The apartment buildings, landscaped area and the shared facilities at Lampton Parkside will be managed and maintained by Notting Hill Genesis. All residents will be required to pay annual service charge contributions for the management, repair and maintenance of these areas, which will be collected by Notting Hill Genesis. We are unable to accommodate any individual changes, additions or amendments to the specification, layout or plans to any individual home. Please note that it may not be possible to obtain the products as referred to in the specification; in such cases a similar alternative will be provided. Hill reserve the right to make these changes as required.





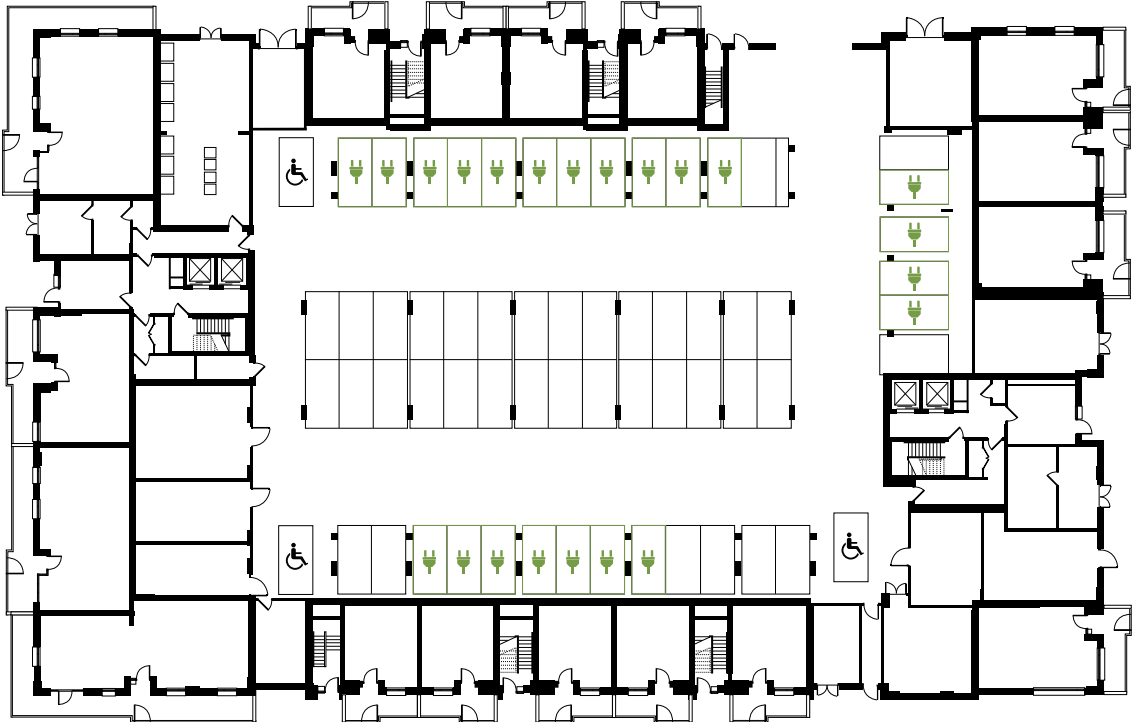


# SITE PLAN



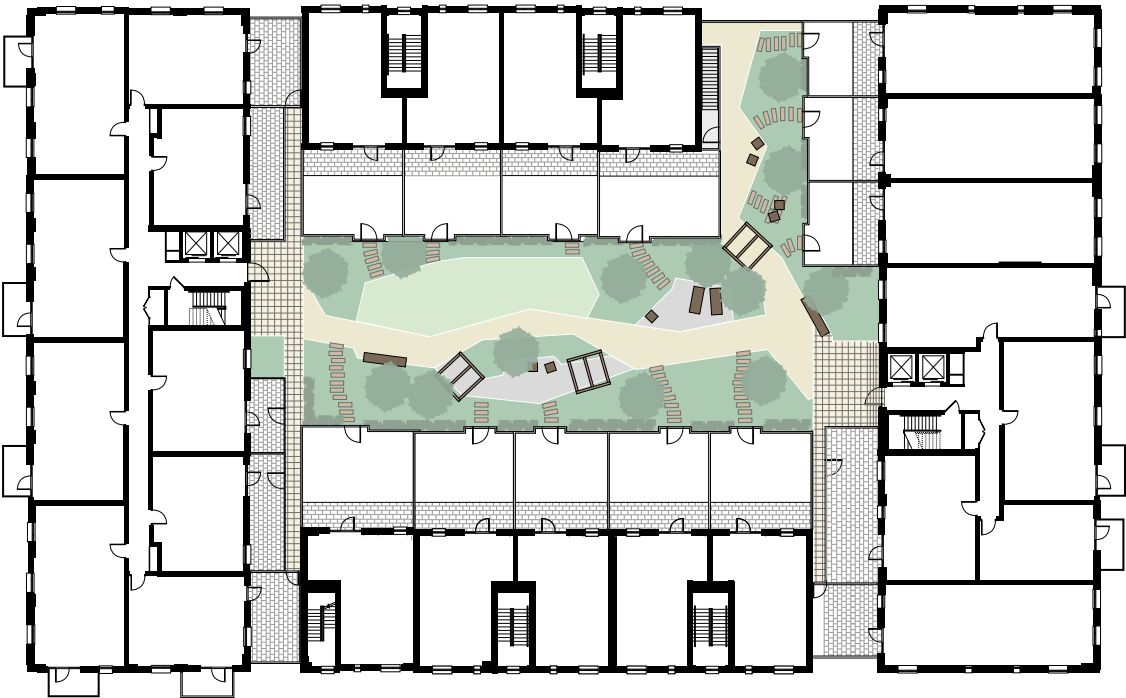
# GREEN SQUARE

## RESIDENTS' PARKING (GROUND)



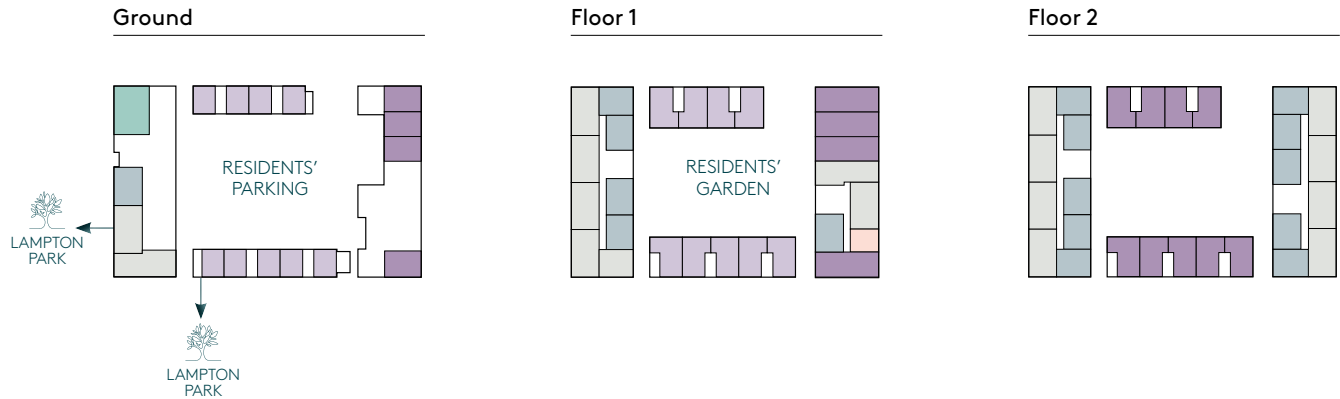
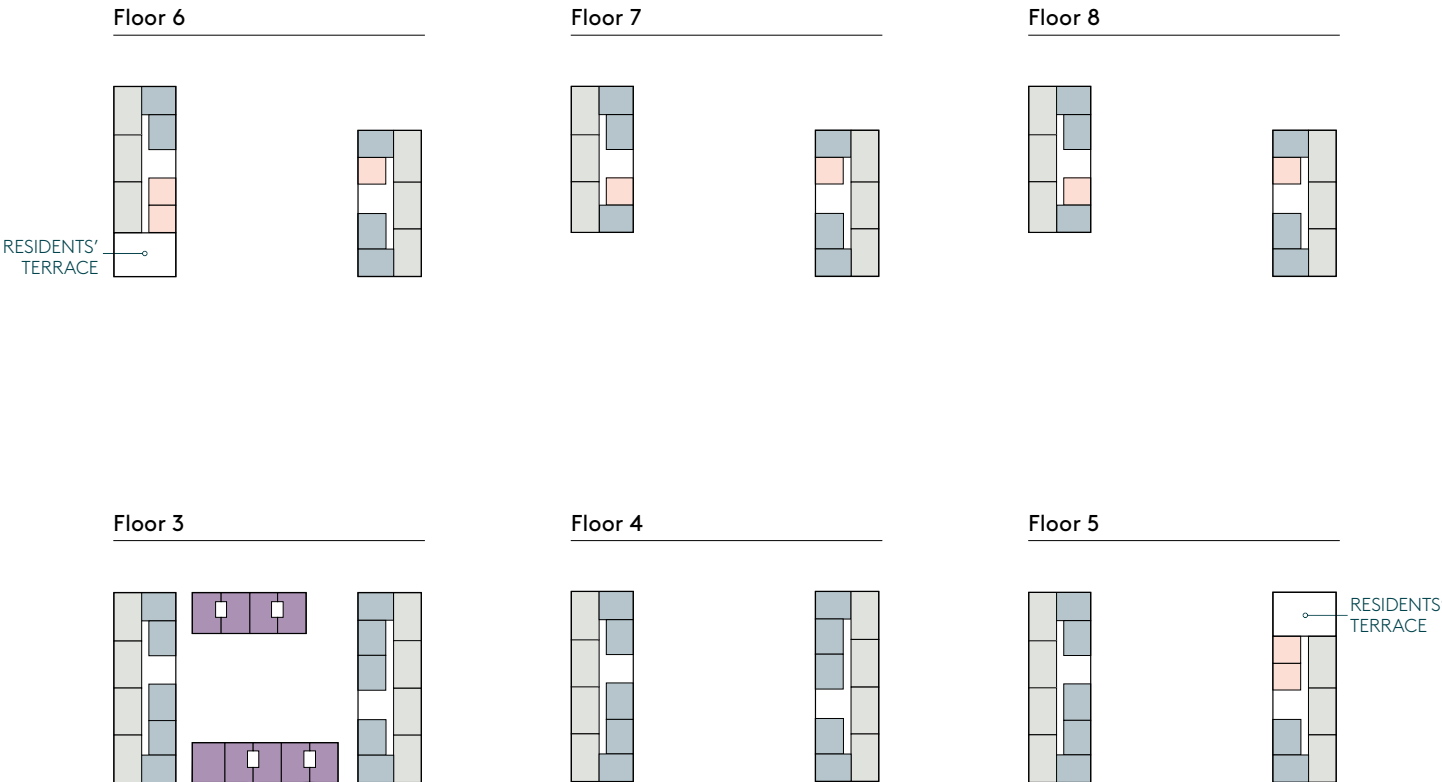
# GREEN SQUARE

## RESIDENTS' GARDEN (FLOOR 1)



# GREEN SQUARE

## APARTMENTS & DUPLEXES



- Studio apartment
- 1 bedroom apartment
- 2 bedroom apartment
- 3 bedroom apartment
- 2 bedroom duplex
- 3 bedroom duplex
- Active charging points





# GREEN SQUARE

## GROUND WEST



1 bedroom apartment   2 bedroom apartment   3 bedroom apartment   3 bedroom duplex

C = Cupboard   W = Wardrobe   R = Riser   US = Utility Store



### G1.2 – 1 bedroom apartment

Kitchen/Living/Dining  
3.20m x 6.25m   10'5" x 20'6"  
Bedroom  
3.90m x 3.70m   12'9" x 12'1"  
Garden  
9.30m x 1.45m   30'6" x 4'9"

### G1.3 – 2 bedroom apartment

Kitchen/Living/Dining  
4.35m x 6.25m   14'3" x 20'6"  
Principal Bedroom  
3.35m x 4.65m   10'11" x 15'3"  
Bedroom 2  
3.65m x 3.00m   11'11" x 9'10"  
Garden  
11.55m x 1.40m   37'10" x 4'7"

### G1.4 – 2 bedroom apartment

Kitchen/Living/Dining  
5.10m x 6.25m   16'8" x 20'6"  
Principal Bedroom  
4.50m x 3.40m   14'9" x 11'1"  
Bedroom 2  
3.95m x 3.30m   12'11" x 10'9"  
Garden  
7.10m x 16.90m   23'3" x 55'5"

### G1.1 – 3 bedroom apartment

Kitchen/Living/Dining  
4.45m x 7.95m   14'7" x 26'0"  
Principal Bedroom  
2.75m x 4.65m   9'0" x 15'3"  
Bedroom 2  
3.85m x 3.20m   12'7" x 10'5"  
Bedroom 3  
2.50m x 3.45m   8'2" x 11'3"  
Garden  
12.95m x 10.15m   42'5" x 33'3"

### G2.1 – 2 bedroom duplex (lower)

See page 48 for details

### G2.2 – 2 bedroom duplex (lower)

See page 48 for details

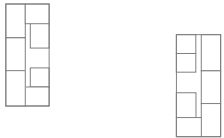
### G4.1 – 2 bedroom duplex (lower)

See page 49 for details

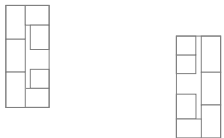
### G4.2 – 2 bedroom duplex (lower)

See page 48 for details

Floor 8



Floor 7



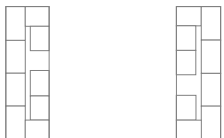
Floor 6



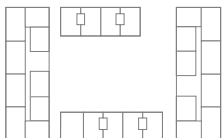
Floor 5



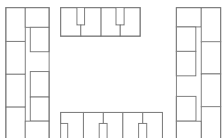
Floor 4



Floor 3



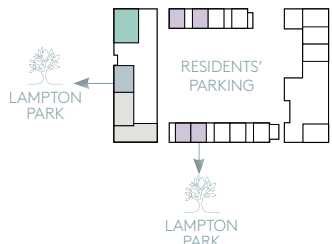
Floor 2



Floor 1



Ground



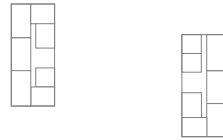
Apartment layouts provide approximate measurements only and are subject to planning. Dimensions, which are taken from the indicated points of measurements are for guidance only and are not intended to be used for window treatments or items of furniture. Bathroom and kitchen layouts are indicative only and are subject to change. Wardrobe size and position may vary. The information contained within this document does not constitute part of any offer, contract or warranty. Whilst the plans have been prepared with all due care for convenience of the intending purchaser, the information herein is a preliminary guide only.



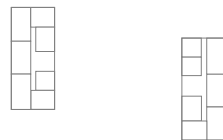
# GREEN SQUARE

## GROUND EAST

Floor 8



Floor 7



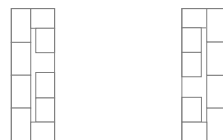
Floor 6



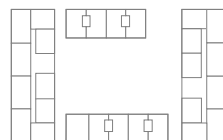
Floor 5



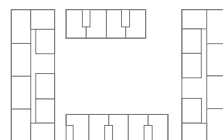
Floor 4



Floor 3



Floor 2



Floor 1



Ground



### G2.3 – 2 bedroom duplex (lower)

See page 48 for details

### G2.4 – 2 bedroom duplex (lower)

See page 48 for details

### G4.3 – 2 bedroom duplex (lower)

See page 48 for details

### G4.4 – 2 bedroom duplex (lower)

See page 48 for details

### G4.5 – 2 bedroom duplex (lower)

See page 48 for details

### G3.1 – 3 bedroom duplex (lower)

See page 50 for details

### G3.2 – 3 bedroom duplex (lower)

See page 51 for details

### G3.3 – 3 bedroom duplex (lower)

See page 51 for details

### G3.4 – 3 bedroom duplex (lower)

See page 52 for details

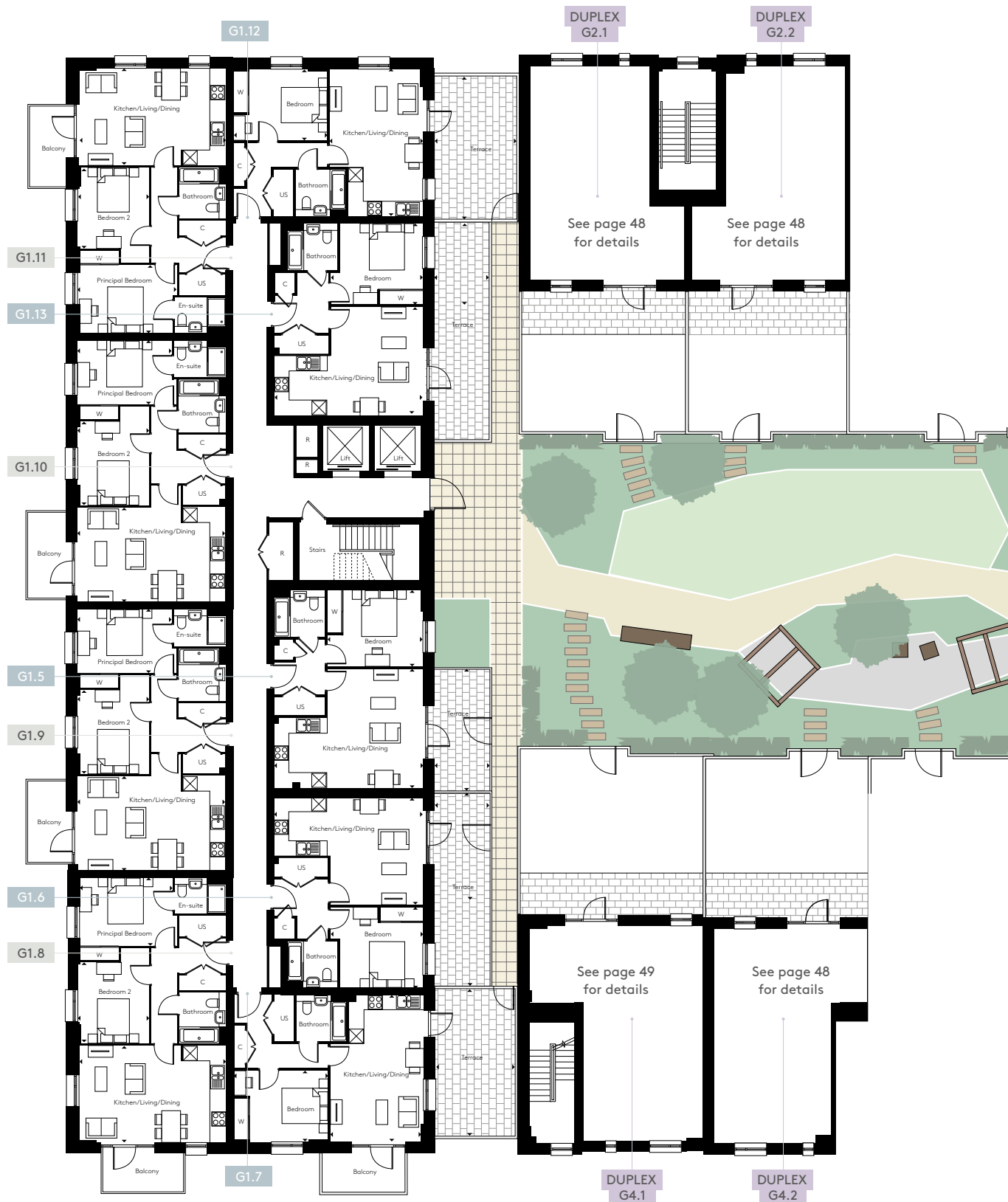


Apartment layouts provide approximate measurements only and are subject to planning. Dimensions, which are taken from the indicated points of measurements are for guidance only and are not intended to be used for window treatments or items of furniture. Bathroom and kitchen layouts are indicative only and are subject to change. Wardrobe size and position may vary. The information contained within this document does not constitute part of any offer, contract or warranty. Whilst the plans have been prepared with all due care for convenience of the intending purchaser, the information herein is a preliminary guide only.



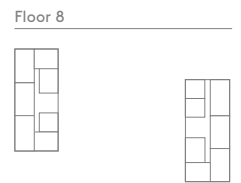
# GREEN SQUARE

## FLOOR 1 WEST

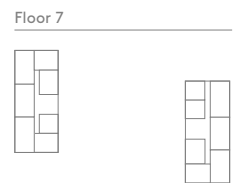


1 bedroom apartment      2 bedroom apartment      2 bedroom duplex

C = Cupboard      W = Wardrobe      R = Riser      US = Utility Store



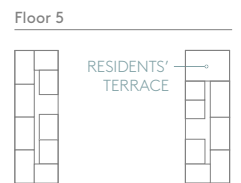
Floor 8



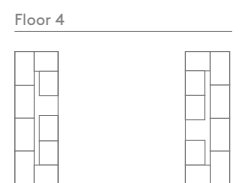
Floor 7



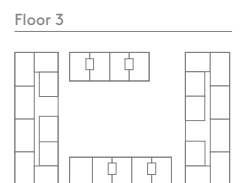
Floor 6



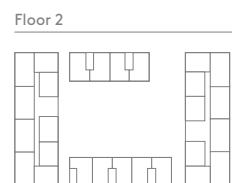
Floor 5



Floor 4



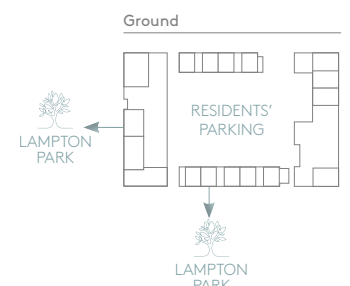
Floor 3



Floor 2



**Floor 1**



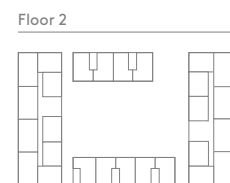
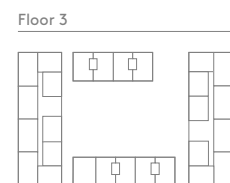
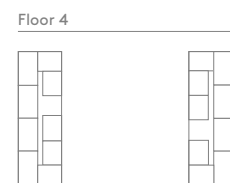
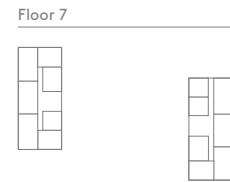
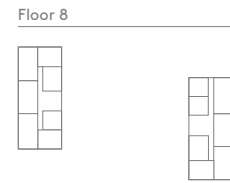
Ground

Apartment layouts provide approximate measurements only and are subject to planning. Dimensions, which are taken from the indicated points of measurements are for guidance only and are not intended to be used for window treatments or items of furniture. Bathroom and kitchen layouts are indicative only and are subject to change. Wardrobe size and position may vary. The information contained within this document does not constitute part of any offer, contract or warranty. Whilst the plans have been prepared with all due care for convenience of the intending purchaser, the information herein is a preliminary guide only.



# GREEN SQUARE

## FLOOR 1 EAST



### G3.6 – studio apartment

Living Area  
5.30m x 3.50m 17'4" x 11'5"  
Kitchen  
3.20m x 2.65m 10'5" x 8'8"

### G3.5 – 1 bedroom apartment

Kitchen/Living/Dining  
5.3m x 6.25m 14'4" x 20'6"  
Bedroom  
3.35m x 4.10m 10'11" x 13'5"  
Podium Garden  
10.9m x 3.60m 35'9" x 11'9"

### G3.7 – 2 bedroom apartment

Kitchen/Living/Dining  
4.05m x 6.20m 13'3" x 20'4"  
Principal Bedroom  
4.15m x 2.75m 13'7" x 9'0"  
Bedroom 2  
3.55m x 3.00m 11'7" x 9'10"

### G3.8 – 2 bedroom apartment

Kitchen/Living/Dining  
6.55m x 4.75m 21'5" x 15'6"  
Principal Bedroom  
4.00m x 2.75m 13'1" x 9'0"  
Bedroom 2  
6.35m x 2.75m 20'9" x 9'0"

### G2.3 – 2 bedroom duplex (upper)

See page 48 for details

### G2.4 – 2 bedroom duplex (upper)

See page 48 for details

### G4.3 – 2 bedroom duplex (upper)

See page 48 for details

### G4.4 – 2 bedroom duplex (upper)

See page 48 for details

### G4.5 – 2 bedroom duplex (upper)

See page 48 for details

### G3.1 – 3 bedroom duplex (upper)

See page 50 for details

### G3.2 – 3 bedroom duplex (upper)

See page 51 for details

### G3.3 – 3 bedroom duplex (upper)

See page 51 for details

### G3.4 – 3 bedroom duplex (upper)

See page 52 for details



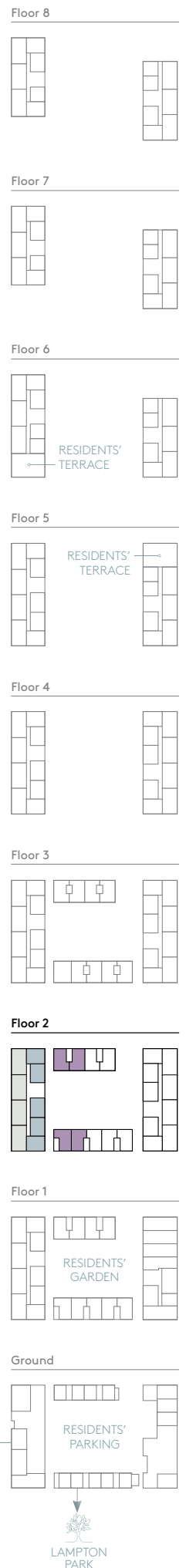
Studio apartment
  1 bedroom apartment
  2 bedroom apartment
  2 bedroom duplex
  3 bedroom duplex

C = Cupboard    W = Wardrobe    R = Riser    US = Utility Store

Apartment layouts provide approximate measurements only and are subject to planning. Dimensions, which are taken from the indicated points of measurements are for guidance only and are not intended to be used for window treatments or items of furniture. Bathroom and kitchen layouts are indicative only and are subject to change. Wardrobe size and position may vary. The information contained within this document does not constitute part of any offer, contract or warranty. Whilst the plans have been prepared with all due care for convenience of the intending purchaser, the information herein is a preliminary guide only.

# GREEN SQUARE

## FLOOR 2 WEST



### G1.14–1 bedroom apartment

Kitchen/Living/Dining	
5.05m x 6.35m	16'6" x 20'9"
Bedroom	
3.25m x 4.05m	10'7" x 13'3"

### G1.15 – 1 bedroom apartment

Kitchen/Living/Dining	
4.60m x 6.35m	15'1" x 20'9"
Bedroom	
3.45m x 3.90m	11'3" x 12'9"

### G1.16 – 1 bedroom apartment

Kitchen/Living/Dining	6.25m x 3.95m	20'6" x 12'11"
Bedroom	3.00m x 4.00m	9'10" x 13'1"

### G1.21–1 bedroom apartment

Kitchen/Living/Dining	6.25m x 3.95m	20'6" x 12'11"
Bedroom	3.00m x 4.00m	9'10" x 13'1"

### G1.22–1 bedroom apartment

Kitchen/Living/Dining	4.60m x 6.35m	15'1" x 20'9"
Bedroom	3.45m x 3.90m	11'3" x 12'9"

### G1.17 – 2 bedroom apartment

Kitchen/Living/Dining	4.10m x 6.35m	13'5" x 20'9"
Principal Bedroom	2.80m x 4.15m	9'2" x 13'7"
Bedroom 2	4.15m x 2.90m	13'7" x 9'6"

### G1.18 – 2 bedroom apartment

Kitchen/Living/Dining	
4.05m x 6.20m	13'3" x 20'4"
Principal Bedroom	
4.15m x 2.75m	13'7" x 9'0"
Bedroom 2	
3.55m x 3.00m	11'7" x 9'10"

**G1.19 – 2 bedroom apartment**

Kitchen/Living/Dining	
4.05m x 6.25m	13'3" x 20'6"
Principal Bedroom	
3.30m x 3.95m	10'9" x 12'11"
Bedroom 2	
3.55m x 3.00m	11'7" x 9'10"

### G1.20 – 2 bedroom apartment

Kitchen/Living/Dining	
4.10m x 6.35m	13'5" x 20'9"
Principal Bedroom	
2.80m x 4.15m	9'2" x 13'7"
Bedroom 2	
4.15m x 2.90m	13'7" x 9'6"

**G2.5 – 3 bedroom duplex (lower)**

See page 53 for details

### G2.6 – 3 bedroom duplex (lower)

See page 53 for details

#### G4.6 – 3 bedroom duplex (lower)

See page 54 for details

#### G4.8 – 3 bedroom duplex (lower)

See page 53 for details

1 bedroom apartment      2 bedroom apartment      3 bedroom duplex

C = Cupboard      W = Wardrobe      R = Riser      US = Utility Store

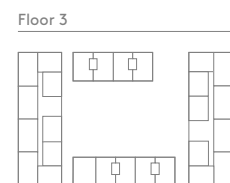
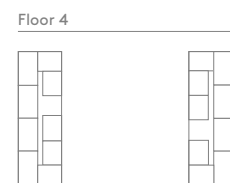
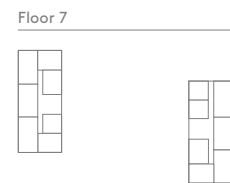
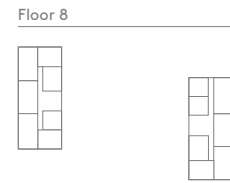


Apartment layouts provide approximate measurements only and are subject to planning. Dimensions, which are taken from the indicated points of measurements are for guidance only and are not intended to be used for window treatments or items of furniture. Bathroom and kitchen layouts are indicative only and are subject to change. Wardrobe size and position may vary. The information contained within this document does not constitute part of any offer, contract or warranty. Whilst the plans have been prepared with all due care for convenience of the intending purchaser, the information herein is a preliminary guide only.



# GREEN SQUARE

## FLOOR 2 EAST



### G3.9 – 1 bedroom apartment

Kitchen/Living/Dining  
4.60m x 6.35m 15'1" x 20'9"  
Bedroom  
3.45m x 3.90m 11'3" x 12'9"

### G3.10 – 1 bedroom apartment

Kitchen/Living/Dining  
6.25m x 3.95m 20'6" x 12'11"  
Bedroom  
3.00m x 4.00m 9'10" x 13'1"

### G3.15 – 1 bedroom apartment

Kitchen/Living/Dining  
6.25m x 3.95m 20'6" x 12'11"  
Bedroom  
3.00m x 4.00m 9'10" x 13'1"

### G3.16 – 1 bedroom apartment

Kitchen/Living/Dining  
4.60m x 6.35m 15'1" x 20'9"  
Bedroom  
3.45m x 3.90m 11'3" x 12'9"

### G3.17 – 1 bedroom apartment

Kitchen/Living/Dining  
5.05m x 6.35m 16'6" x 20'9"  
Bedroom  
3.25m x 4.05m 10'7" x 13'3"

### G3.11 – 2 bedroom apartment

Kitchen/Living/Dining  
4.10m x 6.35m 13'5" x 20'9"  
Principal Bedroom  
2.80m x 4.15m 9'2" x 13'7"  
Bedroom 2  
4.15m x 2.90m 13'7" x 9'6"

### G3.12 – 2 bedroom apartment

Kitchen/Living/Dining  
4.05m x 6.15m 13'3" x 20'2"  
Principal Bedroom  
2.75m x 3.90m 9'0" x 12'9"  
Bedroom 2  
4.35m x 2.85m 14'3" x 9'4"

### G3.13 – 2 bedroom apartment

Kitchen/Living/Dining  
4.15m x 6.25m 13'7" x 20'6"  
Principal Bedroom  
2.75m x 3.95m 9'0" x 12'11"  
Bedroom 2  
4.20m x 3.05m 13'9" x 10'0"

### G3.14 – 2 bedroom apartment

Kitchen/Living/Dining  
4.10m x 6.35m 13'5" x 20'9"  
Principal Bedroom  
2.80m x 4.15m 9'2" x 13'7"  
Bedroom 2  
4.15m x 2.90m 13'7" x 9'6"

### G2.7 – 3 bedroom duplex (lower)

See page 53 for details

### G2.8 – 3 bedroom duplex (lower)

See page 53 for details

### G4.7 – 3 bedroom duplex (lower)

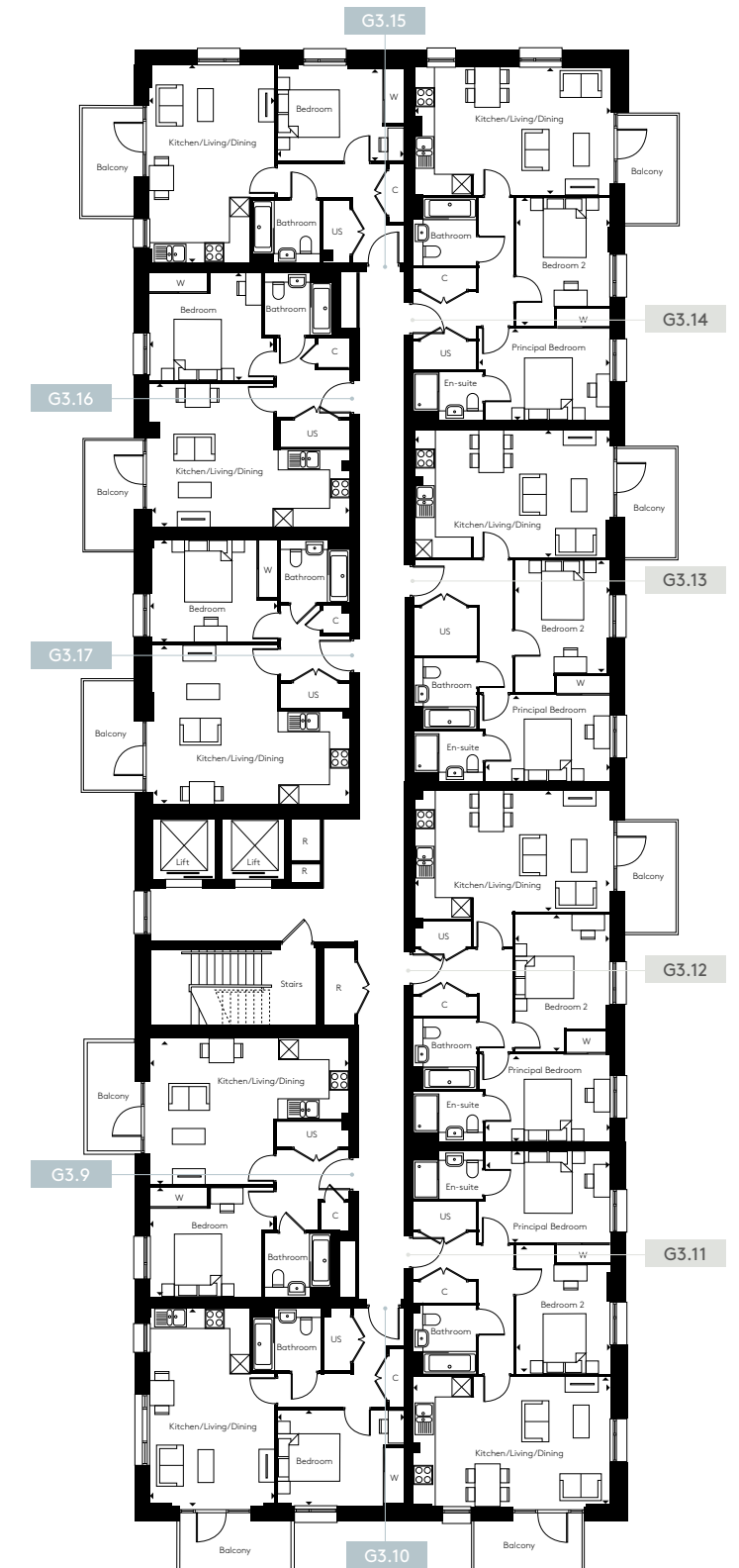
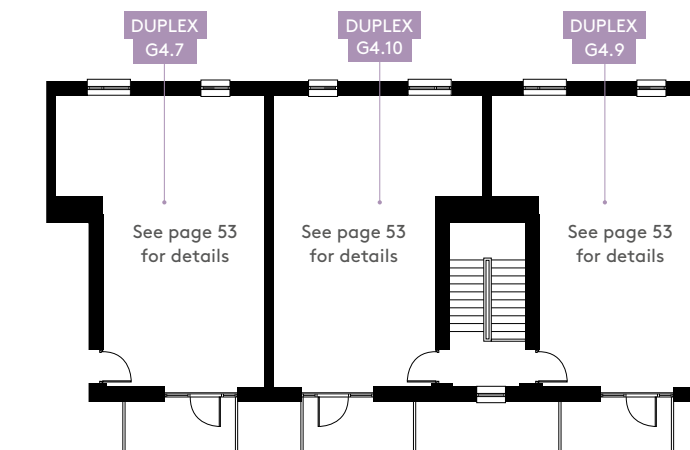
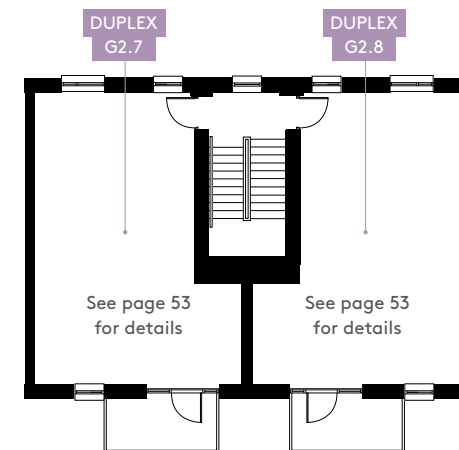
See page 53 for details

### G4.9 – 3 bedroom duplex (lower)

See page 53 for details

### G4.10 – 3 bedroom duplex (lower)

See page 53 for details



1 bedroom apartment 2 bedroom apartment 3 bedroom duplex

C = Cupboard W = Wardrobe R = Riser US = Utility Store



Apartment layouts provide approximate measurements only and are subject to planning. Dimensions, which are taken from the indicated points of measurements are for guidance only and are not intended to be used for window treatments or items of furniture. Bathroom and kitchen layouts are indicative only and are subject to change. Wardrobe size and position may vary. The information contained within this document does not constitute part of any offer, contract or warranty. Whilst the plans have been prepared with all due care for convenience of the intending purchaser, the information herein is a preliminary guide only.

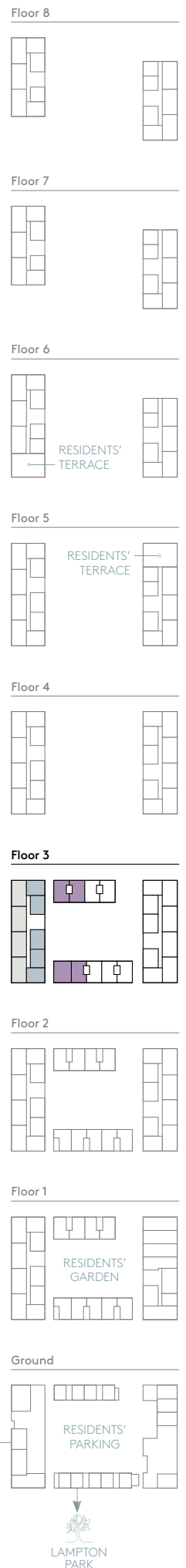
# GREEN SQUARE

## FLOOR 3 WEST



1 bedroom apartment      2 bedroom apartment      3 bedroom duplex

C = Cupboard      W = Wardrobe      R = Riser      US = Utility Store



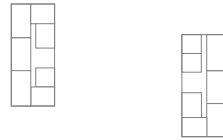
Apartment layouts provide approximate measurements only and are subject to planning. Dimensions, which are taken from the indicated points of measurements are for guidance only and are not intended to be used for window treatments or items of furniture. Bathroom and kitchen layouts are indicative only and are subject to change. Wardrobe size and position may vary. The information contained within this document does not constitute part of any offer, contract or warranty. Whilst the plans have been prepared with all due care for convenience of the intending purchaser, the information herein is a preliminary guide only.



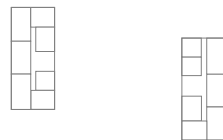
# GREEN SQUARE

## FLOOR 3 EAST

Floor 8



Floor 7



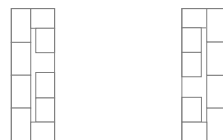
Floor 6



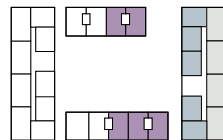
Floor 5



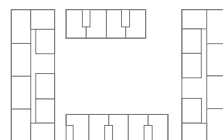
Floor 4



Floor 3



Floor 2



Floor 1



Ground



### G3.18 – 1 bedroom apartment

Kitchen/Living/Dining  
4.60m x 6.35m 15'1" x 20'9"  
Bedroom  
3.45m x 3.90m 11'3" x 12'9"

### G3.19 – 1 bedroom apartment

Kitchen/Living/Dining  
6.25m x 3.95m 20'6" x 12'11"  
Bedroom  
3.00m x 4.00m 9'10" x 13'1"

### G3.24 – 1 bedroom apartment

Kitchen/Living/Dining  
6.25m x 3.95m 20'6" x 12'11"  
Bedroom  
3.00m x 4.00m 9'10" x 13'1"

### G3.25 – 1 bedroom apartment

Kitchen/Living/Dining  
4.60m x 6.35m 15'1" x 20'9"  
Bedroom  
3.45m x 3.90m 11'3" x 12'9"

### G3.26 – 1 bedroom apartment

Kitchen/Living/Dining  
5.05m x 6.35m 16'6" x 20'9"  
Bedroom  
3.25m x 4.05m 10'7" x 13'3"

### G3.20 – 2 bedroom apartment

Kitchen/Living/Dining  
4.10m x 6.35m 13'5" x 20'9"  
Principal Bedroom  
2.80m x 4.15m 9'2" x 13'7"  
Bedroom 2  
4.15m x 2.90m 13'7" x 9'6"

### G3.21 – 2 bedroom apartment

Kitchen/Living/Dining  
4.05m x 6.15m 13'3" x 20'2"  
Principal Bedroom  
2.75m x 3.90m 9'0" x 12'9"  
Bedroom 2  
4.35m x 2.85m 14'3" x 9'4"

### G3.22 – 2 bedroom apartment

Kitchen/Living/Dining  
4.15m x 6.25m 13'7" x 20'6"  
Principal Bedroom  
2.75m x 3.95m 9'0" x 12'11"  
Bedroom 2  
4.20m x 3.05m 13'9" x 10'0"

### G3.23 – 2 bedroom apartment

Kitchen/Living/Dining  
4.10m x 6.35m 13'5" x 20'9"  
Principal Bedroom  
2.80m x 4.15m 9'2" x 13'7"  
Bedroom 2  
4.15m x 2.90m 13'7" x 9'6"

### G2.7 – 3 bedroom duplex (upper)

See page 53 for details

### G2.8 – 3 bedroom duplex (upper)

See page 53 for details

### G4.7 – 3 bedroom duplex (upper)

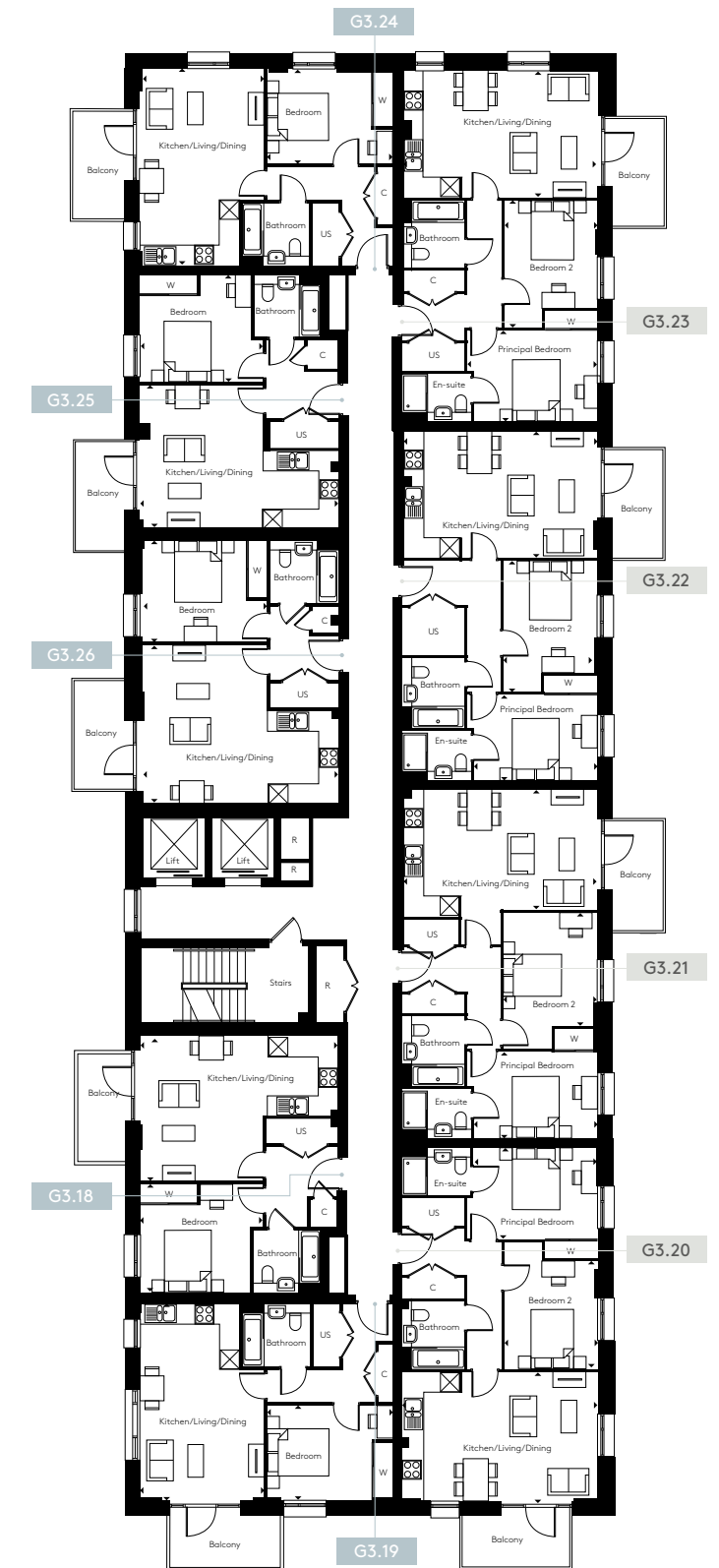
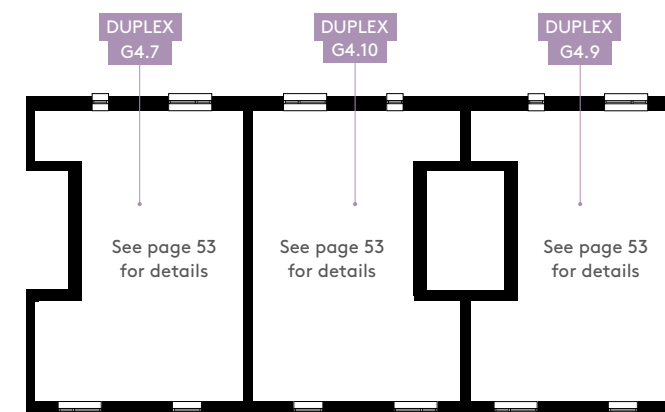
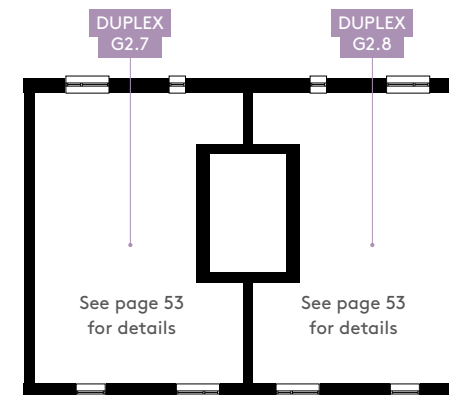
See page 53 for details

### G4.9 – 3 bedroom duplex (upper)

See page 53 for details

### G4.10 – 3 bedroom duplex (upper)

See page 53 for details



1 bedroom apartment 2 bedroom apartment 3 bedroom duplex

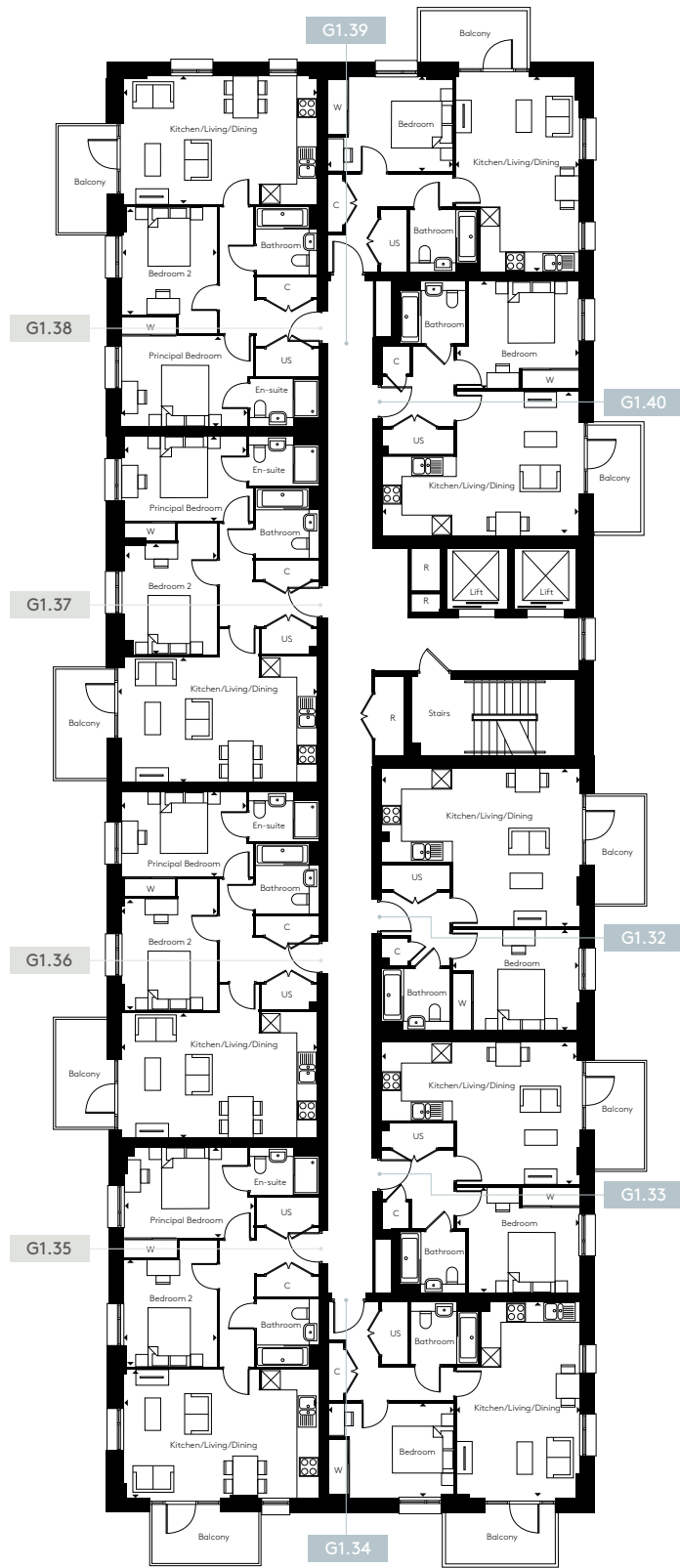
C = Cupboard W = Wardrobe R = Riser US = Utility Store



Apartment layouts provide approximate measurements only and are subject to planning. Dimensions, which are taken from the indicated points of measurements are for guidance only and are not intended to be used for window treatments or items of furniture. Bathroom and kitchen layouts are indicative only and are subject to change. Wardrobe size and position may vary. The information contained within this document does not constitute part of any offer, contract or warranty. Whilst the plans have been prepared with all due care for convenience of the intending purchaser, the information herein is a preliminary guide only.

# GREEN SQUARE

## FLOOR 4 WEST



### G1.32 – 1 bedroom apartment

Kitchen/Living/Dining  
5.05m x 6.35m    16'6" x 20'9"  
Bedroom  
3.25m x 4.05m    10'7" x 13'3"

### G1.33 – 1 bedroom apartment

Kitchen/Living/Dining  
4.60m x 6.35m    15'1" x 20'9"  
Bedroom  
3.45m x 3.90m    11'3" x 12'9"

### G1.34 – 1 bedroom apartment

Kitchen/Living/Dining  
6.25m x 3.95m    20'6" x 12'11"  
Bedroom  
3.00m x 4.00m    9'10" x 13'1"

### G1.39 – 1 bedroom apartment

Kitchen/Living/Dining  
6.25m x 3.95m    20'6" x 12'11"  
Bedroom  
3.00m x 4.00m    9'10" x 13'1"

### G1.40 – 1 bedroom apartment

Kitchen/Living/Dining  
4.60m x 6.35m    15'1" x 20'9"  
Bedroom  
3.45m x 3.90m    11'3" x 12'9"

### G1.35 – 2 bedroom apartment

Kitchen/Living/Dining  
4.10m x 6.35m    13'5" x 20'9"  
Principal Bedroom  
2.80m x 4.15m    9'2" x 13'7"  
Bedroom 2  
4.15m x 2.90m    13'7" x 9'6"

### G1.36 – 2 bedroom apartment

Kitchen/Living/Dining  
4.05m x 6.20m    13'3" x 20'4"  
Principal Bedroom  
4.15m x 2.75m    13'7" x 9'0"  
Bedroom 2  
3.55m x 3.00m    11'7" x 9'10"

### G1.37 – 2 bedroom apartment

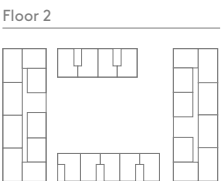
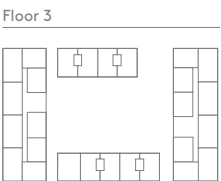
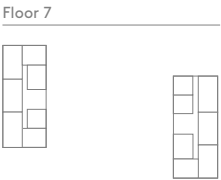
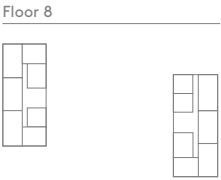
Kitchen/Living/Dining  
4.05m x 6.25m    13'3" x 20'6"  
Principal Bedroom  
3.30m x 3.95m    10'9" x 12'11"  
Bedroom 2  
3.55m x 3.00m    11'7" x 9'10"

### G1.38 – 2 bedroom apartment

Kitchen/Living/Dining  
4.10m x 6.35m    13'5" x 20'9"  
Principal Bedroom  
2.80m x 4.15m    9'2" x 13'7"  
Bedroom 2  
4.15m x 2.90m    13'7" x 9'6"

1 bedroom apartment    2 bedroom apartment

C = Cupboard    W = Wardrobe    R = Riser    US = Utility Store

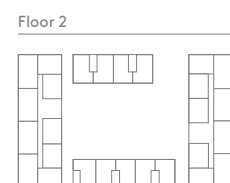
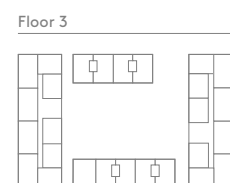
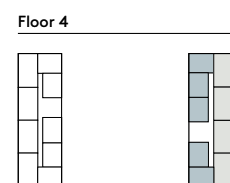
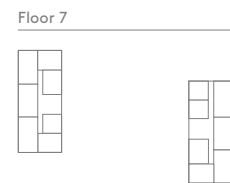
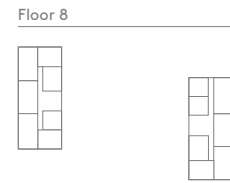


Apartment layouts provide approximate measurements only and are subject to planning. Dimensions, which are taken from the indicated points of measurements are for guidance only and are not intended to be used for window treatments or items of furniture. Bathroom and kitchen layouts are indicative only and are subject to change. Wardrobe size and position may vary. The information contained within this document does not constitute part of any offer, contract or warranty. Whilst the plans have been prepared with all due care for convenience of the intending purchaser, the information herein is a preliminary guide only.



# GREEN SQUARE

## FLOOR 4 EAST



### G3.27 – 1 bedroom apartment

Kitchen/Living/Dining  
4.60m x 6.35m 15'1" x 20'9"  
Bedroom  
3.45m x 3.90m 11'3" x 12'9"

### G3.28 – 1 bedroom apartment

Kitchen/Living/Dining  
6.25m x 3.95m 20'6" x 12'11"  
Bedroom  
3.00m x 4.00m 9'10" x 13'1"

### G3.33 – 1 bedroom apartment

Kitchen/Living/Dining  
6.25m x 3.95m 20'6" x 12'11"  
Bedroom  
3.00m x 4.00m 9'10" x 13'1"

### G3.34 – 1 bedroom apartment

Kitchen/Living/Dining  
4.60m x 6.35m 15'1" x 20'9"  
Bedroom  
3.45m x 3.90m 11'3" x 12'9"

### G3.35 – 1 bedroom apartment

Kitchen/Living/Dining  
5.05m x 6.35m 16'6" x 20'9"  
Bedroom  
3.25m x 4.05m 10'7" x 13'3"

### G3.29 – 2 bedroom apartment

Kitchen/Living/Dining  
4.10m x 6.35m 13'5" x 20'9"  
Principal Bedroom  
2.80m x 4.15m 9'2" x 13'7"  
Bedroom 2  
4.15m x 2.90m 13'7" x 9'6"

### G3.30 – 2 bedroom apartment

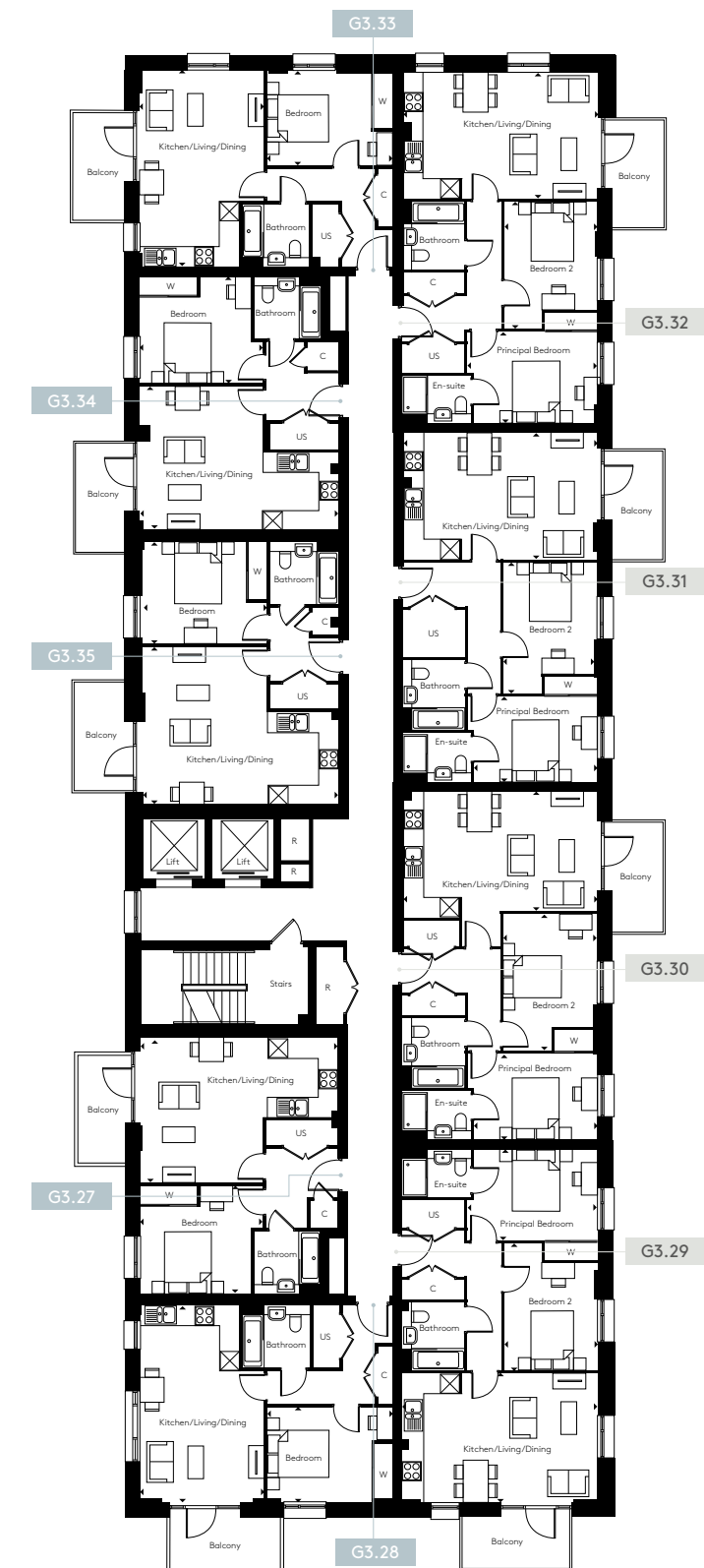
Kitchen/Living/Dining  
4.05m x 6.15m 13'3" x 20'2"  
Principal Bedroom  
2.75m x 3.90m 9'0" x 12'9"  
Bedroom 2  
4.35m x 2.85m 14'3" x 9'4"

### G3.31 – 2 bedroom apartment

Kitchen/Living/Dining  
4.15m x 6.25m 13'7" x 20'6"  
Principal Bedroom  
2.75m x 3.95m 9'0" x 12'11"  
Bedroom 2  
4.20m x 3.05m 13'9" x 10'0"

### G3.32 – 2 bedroom apartment

Kitchen/Living/Dining  
4.10m x 6.35m 13'5" x 20'9"  
Principal Bedroom  
2.80m x 4.15m 9'2" x 13'7"  
Bedroom 2  
4.15m x 2.90m 13'7" x 9'6"



1 bedroom apartment 2 bedroom apartment

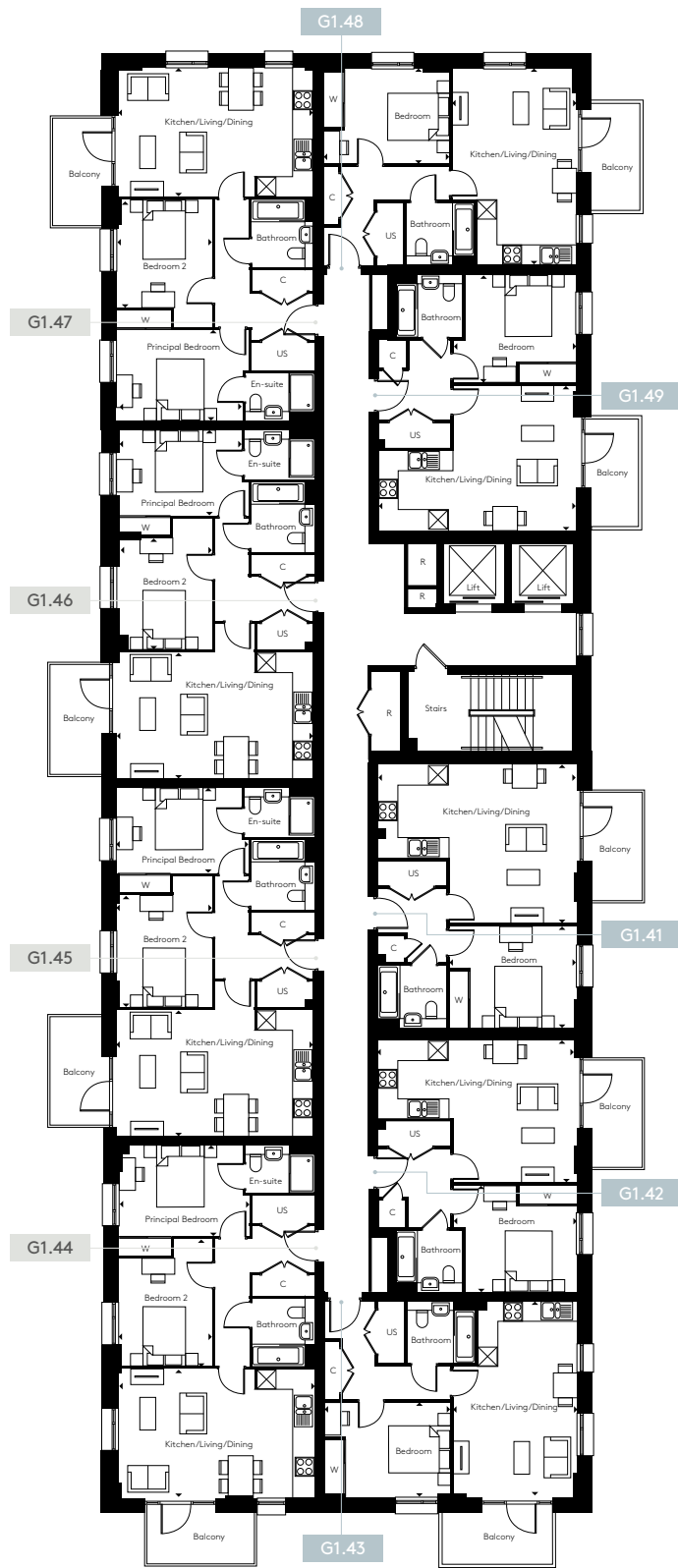
C = Cupboard W = Wardrobe R = Riser US = Utility Store

Apartment layouts provide approximate measurements only and are subject to planning. Dimensions, which are taken from the indicated points of measurements are for guidance only and are not intended to be used for window treatments or items of furniture. Bathroom and kitchen layouts are indicative only and are subject to change. Wardrobe size and position may vary. The information contained within this document does not constitute part of any offer, contract or warranty. Whilst the plans have been prepared with all due care for convenience of the intending purchaser, the information herein is a preliminary guide only.



# GREEN SQUARE

## FLOOR 5 WEST



### G1.41 – 1 bedroom apartment

Kitchen/Living/Dining  
5.05m x 6.35m 16'6" x 20'9"  
Bedroom  
3.25m x 4.05m 10'7" x 13'3"

### G1.42 – 1 bedroom apartment

Kitchen/Living/Dining  
4.60m x 6.35m 15'1" x 20'9"  
Bedroom  
3.45m x 3.90m 11'3" x 12'9"

### G1.43 – 1 bedroom apartment

Kitchen/Living/Dining  
6.25m x 3.95m 20'6" x 12'11"  
Bedroom  
3.00m x 4.00m 9'10" x 13'1"

### G1.48 – 1 bedroom apartment

Kitchen/Living/Dining  
6.25m x 3.95m 20'6" x 12'11"  
Bedroom  
3.00m x 4.00m 9'10" x 13'1"

### G1.49 – 1 bedroom apartment

Kitchen/Living/Dining  
4.60m x 6.35m 15'1" x 20'9"  
Bedroom  
3.45m x 3.90m 11'3" x 12'9"

### G1.44 – 2 bedroom apartment

Kitchen/Living/Dining  
4.10m x 6.35m 13'5" x 20'9"  
Principal Bedroom  
2.80m x 4.15m 9'2" x 13'7"  
Bedroom 2  
4.15m x 2.90m 13'7" x 9'6"

### G1.45 – 2 bedroom apartment

Kitchen/Living/Dining  
4.05m x 6.20m 13'3" x 20'4"  
Principal Bedroom  
4.15m x 2.75m 13'7" x 9'0"  
Bedroom 2  
3.55m x 3.00m 11'7" x 9'10"

### G1.46 – 2 bedroom apartment

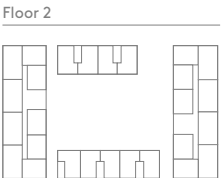
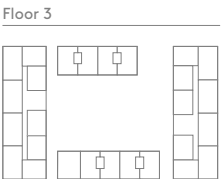
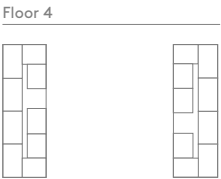
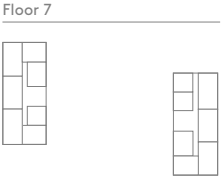
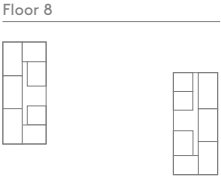
Kitchen/Living/Dining  
4.05m x 6.25m 13'3" x 20'6"  
Principal Bedroom  
3.30m x 3.95m 10'9" x 12'11"  
Bedroom 2  
3.55m x 3.00m 11'7" x 9'10"

### G1.47 – 2 bedroom apartment

Kitchen/Living/Dining  
4.10m x 6.35m 13'5" x 20'9"  
Principal Bedroom  
2.80m x 4.15m 9'2" x 13'7"  
Bedroom 2  
4.15m x 2.90m 13'7" x 9'6"

1 bedroom apartment 2 bedroom apartment

C = Cupboard W = Wardrobe R = Riser US = Utility Store

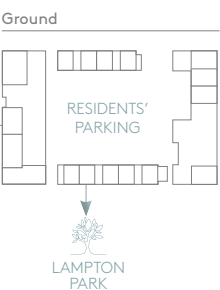
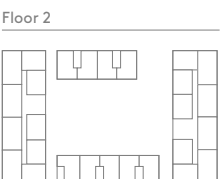
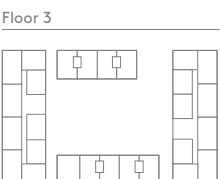
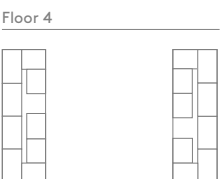
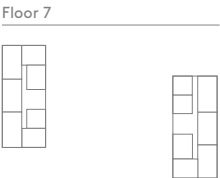
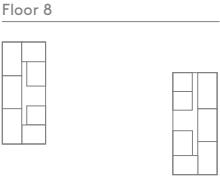


Apartment layouts provide approximate measurements only and are subject to planning. Dimensions, which are taken from the indicated points of measurements are for guidance only and are not intended to be used for window treatments or items of furniture. Bathroom and kitchen layouts are indicative only and are subject to change. Wardrobe size and position may vary. The information contained within this document does not constitute part of any offer, contract or warranty. Whilst the plans have been prepared with all due care for convenience of the intending purchaser, the information herein is a preliminary guide only.



# GREEN SQUARE

## FLOOR 5 EAST



### G3.41 – studio apartment

Living Area  
6.30m x 6.40m    20'7" x 20'11"

### G3.42 – studio apartment

Living Area  
3.45m x 6.35m    11'3" x 20'9"

Bedroom  
4.10m x 2.75m    13'5" x 9'0"

### G3.36 – 1 bedroom apartment

Kitchen/Living/Dining  
4.60m x 6.35m    15'1" x 20'9"

Bedroom  
3.45m x 3.90m    11'3" x 12'9"

### G3.37 – 1 bedroom apartment

Kitchen/Living/Dining  
6.25m x 3.95m    20'6" x 12'11"

Bedroom  
3.00m x 4.00m    9'10" x 13'1"

### G3.38 – 2 bedroom apartment

Kitchen/Living/Dining  
4.10m x 6.35m    13'5" x 20'9"

Principal Bedroom  
2.80m x 4.15m    9'2" x 13'7"

Bedroom 2  
4.15m x 2.90m    13'7" x 9'6"

### G3.39 – 2 bedroom apartment

Kitchen/Living/Dining  
4.05m x 6.15m    13'3" x 20'2"

Principal Bedroom  
2.75m x 3.90m    9'0" x 12'9"

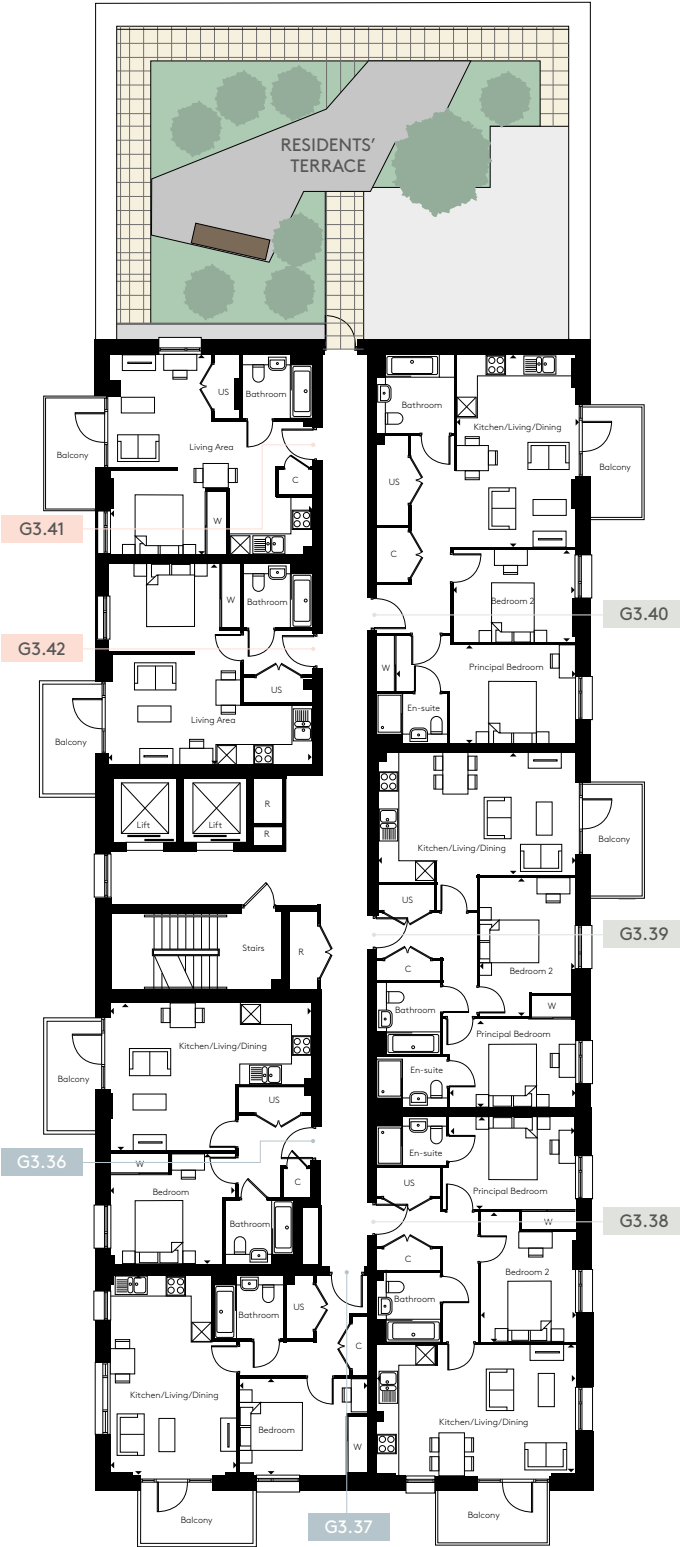
Bedroom 2  
4.35m x 2.85m    14'3" x 9'4"

### G3.40 – 2 bedroom apartment

Kitchen/Living/Dining  
6.05m x 3.70m    19'10" x 12'1"

Principal Bedroom  
3.05m x 5.60m    10'0" x 18'4"

Bedroom 2  
2.85m x 3.80m    9'4" x 12'5"



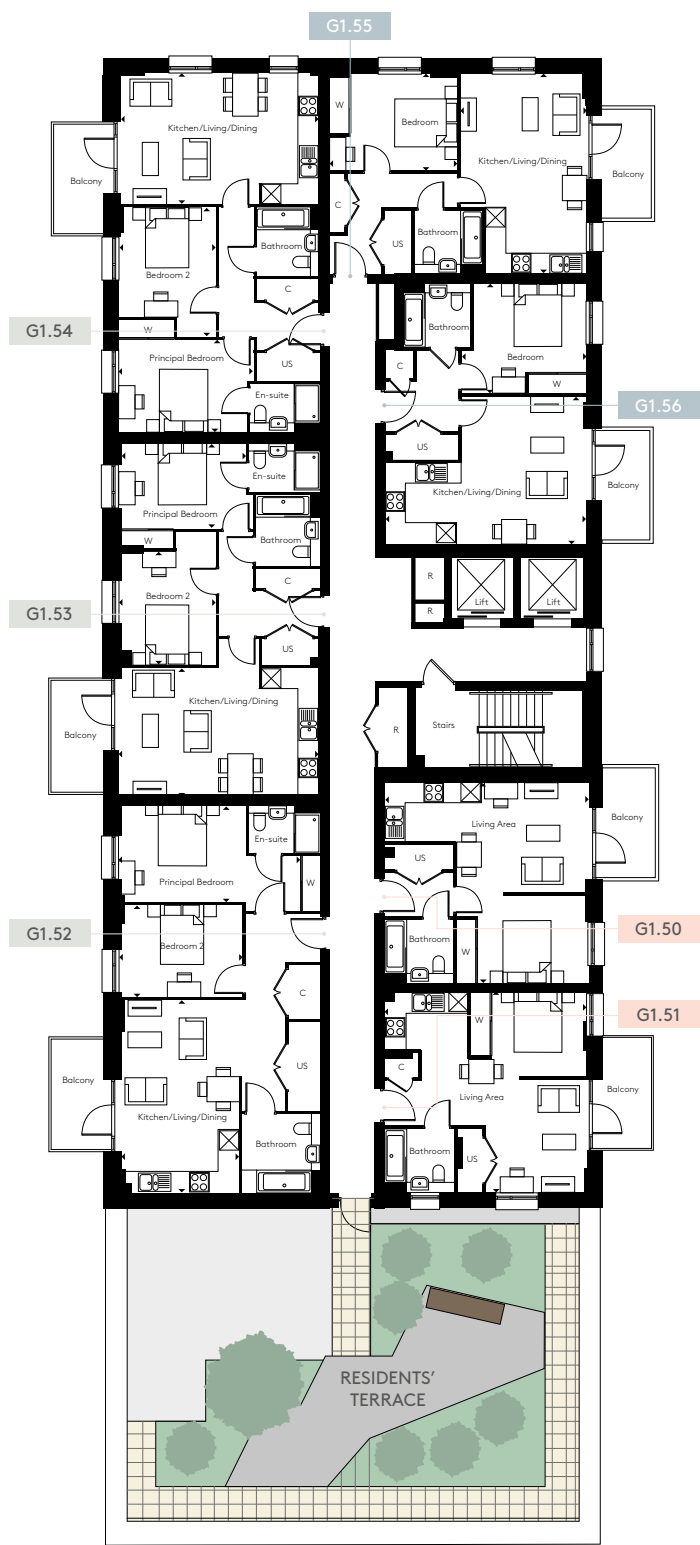
Studio apartment    1 bedroom apartment    2 bedroom apartment

C = Cupboard    W = Wardrobe    R = Riser    US = Utility Store

Apartment layouts provide approximate measurements only and are subject to planning. Dimensions, which are taken from the indicated points of measurements are for guidance only and are not intended to be used for window treatments or items of furniture. Bathroom and kitchen layouts are indicative only and are subject to change. Wardrobe size and position may vary. The information contained within this document does not constitute part of any offer, contract or warranty. Whilst the plans have been prepared with all due care for convenience of the intending purchaser, the information herein is a preliminary guide only.

# GREEN SQUARE

## FLOOR 6 WEST



### G1.50 – studio apartment

Living Area	3.45m x 6.35m	11'3" x 20'9"
Bedroom	4.10m x 2.75m	13'5" x 9'0"

### G1.51 – studio apartment

Living Area	3.50m x 3.10m	11'5" x 10'2"
Kitchen	2.10m x 2.60m	6'10" x 8'6"
Bedroom	2.60m x 3.00m	8'6" x 9'10"

### G1.55 – 1 bedroom apartment

Kitchen/Living/Dining	6.25m x 3.95m	20'6" x 12'11"
Bedroom	3.00m x 4.00m	9'10" x 13'1"

### G1.56 – 1 bedroom apartment

Kitchen/Living/Dining	4.60m x 6.35m	15'1" x 20'9"
Bedroom	3.45m x 3.90m	11'3" x 12'9"

### G1.52 – 2 bedroom apartment

Kitchen/Living/Dining	6.05m x 3.65m	19'10" x 11'11"
Principal Bedroom	3.05m x 5.60m	10'0" x 18'4"
Bedroom 2	2.85m x 3.65m	9'4" x 11'11"

### G1.53 – 2 bedroom apartment

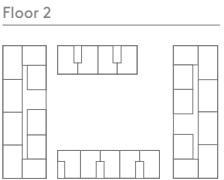
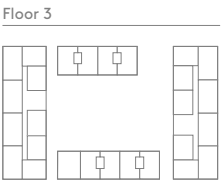
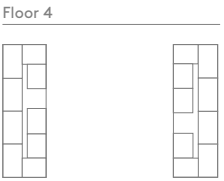
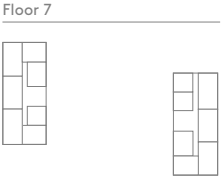
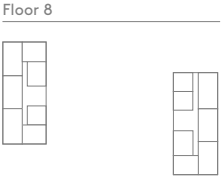
Kitchen/Living/Dining	4.05m x 6.25m	13'3" x 20'6"
Principal Bedroom	3.30m x 3.95m	10'9" x 12'11"
Bedroom 2	3.55m x 3.00m	11'7" x 9'10"

### G1.54 – 2 bedroom apartment

Kitchen/Living/Dining	4.10m x 6.35m	13'5" x 20'9"
Principal Bedroom	2.80m x 4.15m	9'2" x 13'7"
Bedroom 2	4.15m x 2.90m	13'7" x 9'6"

Studio apartment 1 bedroom apartment 2 bedroom apartment

C = Cupboard W = Wardrobe R = Riser US = Utility Store



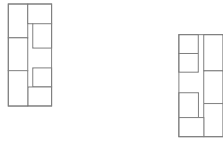
Apartment layouts provide approximate measurements only and are subject to planning. Dimensions, which are taken from the indicated points of measurements are for guidance only and are not intended to be used for window treatments or items of furniture. Bathroom and kitchen layouts are indicative only and are subject to change. Wardrobe size and position may vary. The information contained within this document does not constitute part of any offer, contract or warranty. Whilst the plans have been prepared with all due care for convenience of the intending purchaser, the information herein is a preliminary guide only.



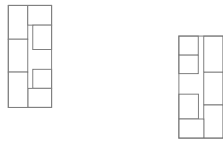
# GREEN SQUARE

## FLOOR 6 EAST

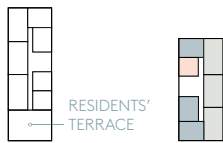
Floor 8



Floor 7



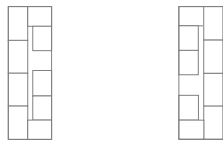
Floor 6



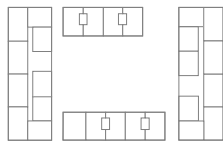
Floor 5



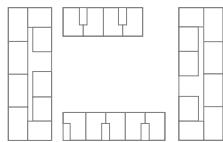
Floor 4



Floor 3



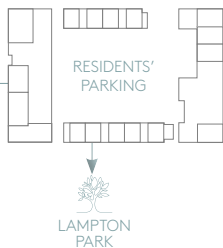
Floor 2



Floor 1



Ground



### G3.49 – studio apartment

Living Room  
3.45m x 6.35m    11'3" x 20'9"

Bedroom  
4.10m x 2.75m    13'5" x 9'0"

### G3.43 – 1 bedroom apartment

Kitchen/Living/Dining  
4.60m x 6.35m    15'1" x 20'9"

Bedroom  
3.45m x 3.90m    11'3" x 12'9"

### G3.44 – 1 bedroom apartment

Kitchen/Living/Dining  
6.25m x 3.95m    20'6" x 12'11"

Bedroom  
3.00m x 4.00m    9'10" x 13'1"

### G3.48 – 1 bedroom apartment

Kitchen/Living/Dining  
6.25m x 3.90m    20'6" x 12'9"

Bedroom  
3.00m x 4.05m    9'10" x 13'3"

### G3.45 – 2 bedroom apartment

Kitchen/Living/Dining  
4.10m x 6.35m    13'5" x 20'9"

Principal Bedroom  
2.80m x 4.15m    9'2" x 13'7"

Bedroom 2  
4.15m x 2.90m    13'7" x 9'6"

### G3.46 – 2 bedroom apartment

Kitchen/Living/Dining  
4.05m x 6.15m    13'3" x 20'2"

Principal Bedroom  
2.75m x 3.90m    9'0" x 12'9"

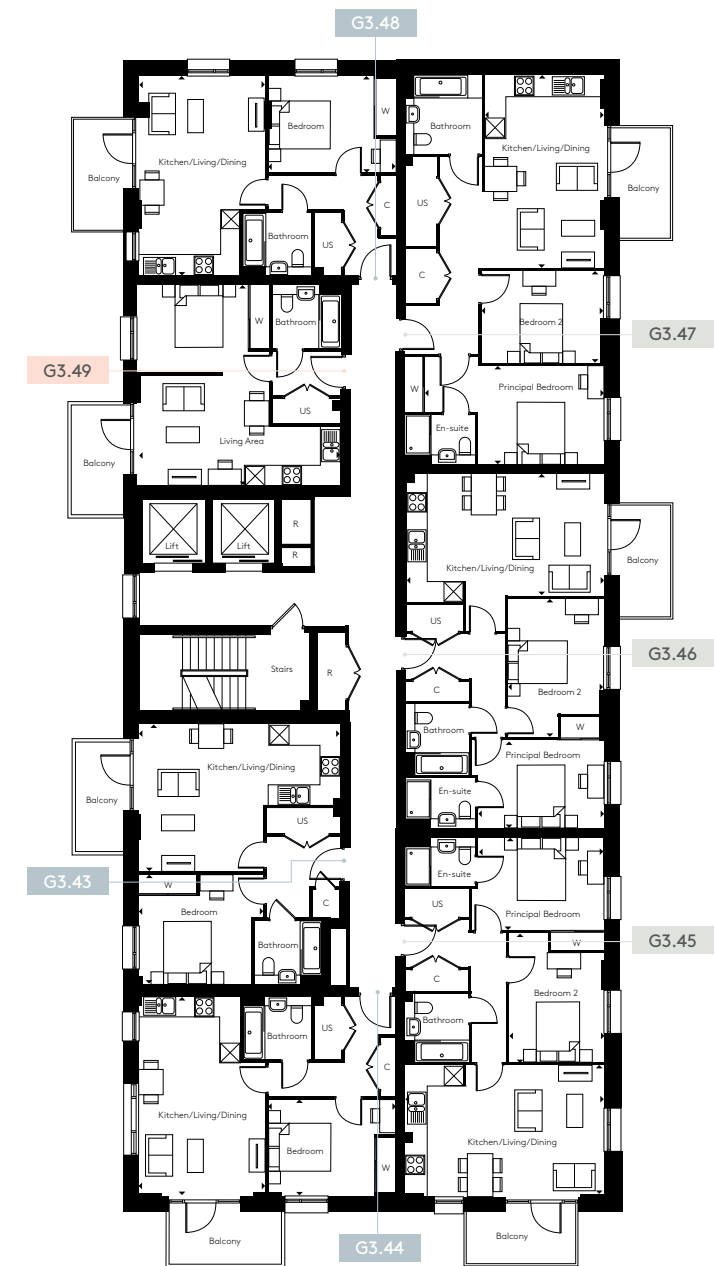
Bedroom 2  
4.35m x 2.85m    14'3" x 9'4"

### G3.47 – 2 bedroom apartment

Kitchen/Living/Dining  
6.05m x 3.70m    19'10" x 12'1"

Principal Bedroom  
3.05m x 5.60m    10'0" x 18'4"

Bedroom 2  
2.85m x 3.80m    9'4" x 12'5"



Studio apartment
  1 bedroom apartment
  2 bedroom apartment

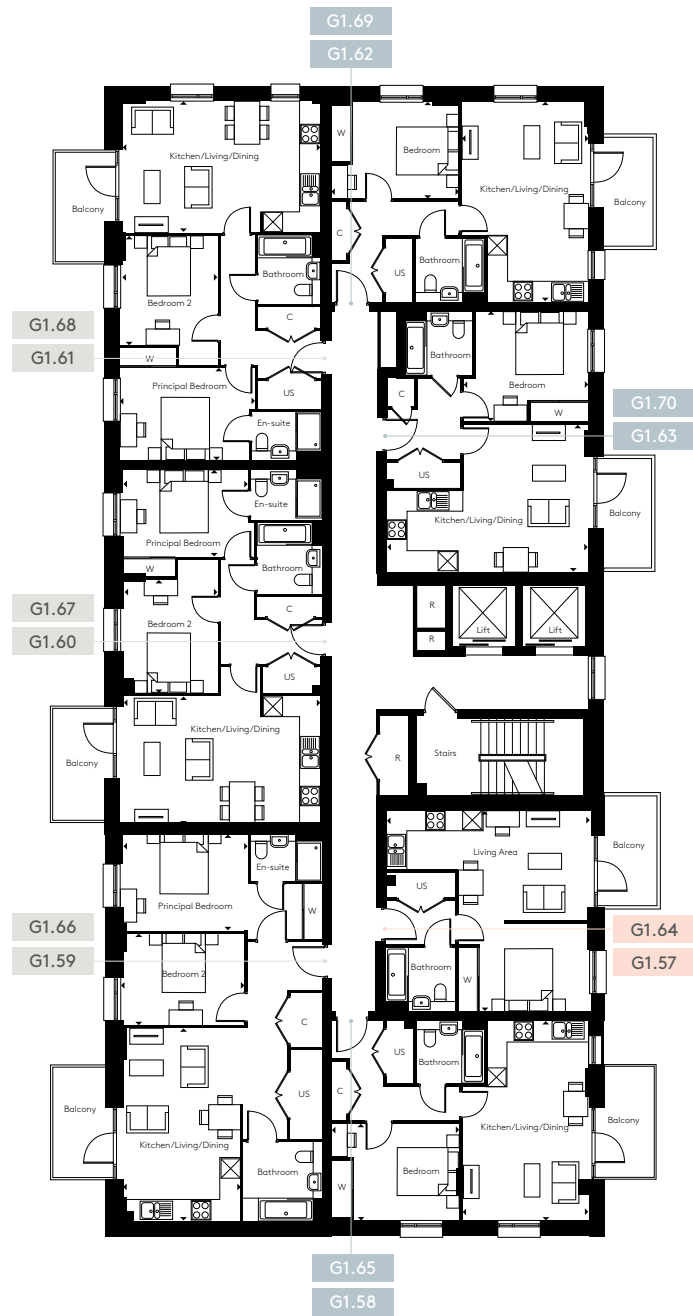
C = Cupboard    W = Wardrobe    R = Riser    US = Utility Store



Apartment layouts provide approximate measurements only and are subject to planning. Dimensions, which are taken from the indicated points of measurements are for guidance only and are not intended to be used for window treatments or items of furniture. Bathroom and kitchen layouts are indicative only and are subject to change. Wardrobe size and position may vary. The information contained within this document does not constitute part of any offer, contract or warranty. Whilst the plans have been prepared with all due care for convenience of the intending purchaser, the information herein is a preliminary guide only.

# GREEN SQUARE

## FLOORS 7 AND 8 WEST



### G1.57, G1.64 – studio apartment

Living Area	3.45m x 6.35m	11'3" x 20'9"
Bedroom	4.10m x 2.75m	13'5" x 9'0"

### G1.58, G1.65 – 1 bedroom apartment

Kitchen/Living/Dining	6.25m x 3.90m	20'6" x 12'9"
Bedroom	3.00m x 4.05m	9'10" x 13'3"

### G1.62, G1.69 – 1 bedroom apartment

Kitchen/Living/Dining	6.25m x 3.95m	20'6" x 12'11"
Bedroom	3.00m x 4.00m	9'10" x 13'1"

### G1.63, G1.70 – 1 bedroom apartment

Kitchen/Living/Dining	4.60m x 6.35m	15'1" x 20'9"
Bedroom	3.45m x 3.90m	11'3" x 12'9"

### G1.59, G1.66 – 2 bedroom apartment

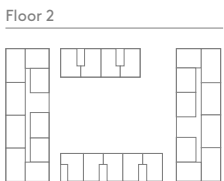
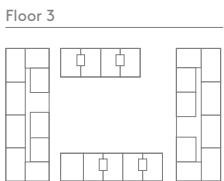
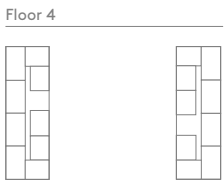
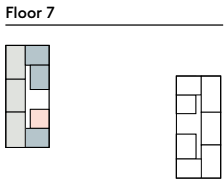
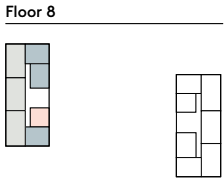
Kitchen/Living/Dining	6.05m x 3.70m	19'10" x 12'1"
Principal Bedroom	3.05m x 5.60m	10'0" x 18'4"
Bedroom 2	2.85m x 3.80m	9'4" x 12'5"

### G1.60, G1.67 – 2 bedroom apartment

Kitchen/Living/Dining	4.05m x 6.25m	13'3" x 20'6"
Principal Bedroom	3.30m x 3.95m	10'9" x 12'11"
Bedroom 2	3.55m x 3.00m	11'7" x 9'10"

### G1.61, G1.68 – 2 bedroom apartment

Kitchen/Living/Dining	4.10m x 6.35m	13'5" x 20'9"
Principal Bedroom	2.80m x 4.15m	9'2" x 13'7"
Bedroom 2	4.15m x 2.90m	13'7" x 9'6"

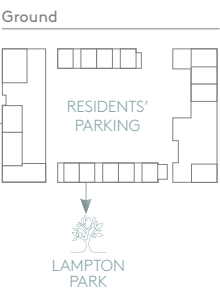
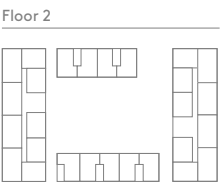
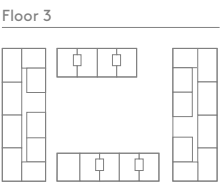
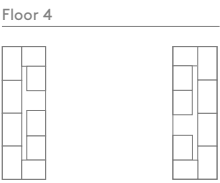
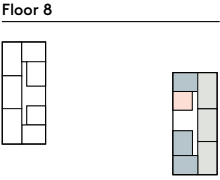


LAMPTON PARK

LAMPTON PARK

Apartment layouts provide approximate measurements only and are subject to planning. Dimensions, which are taken from the indicated points of measurements are for guidance only and are not intended to be used for window treatments or items of furniture. Bathroom and kitchen layouts are indicative only and are subject to change. Wardrobe size and position may vary. The information contained within this document does not constitute part of any offer, contract or warranty. Whilst the plans have been prepared with all due care for convenience of the intending purchaser, the information herein is a preliminary guide only.





# GREEN SQUARE

## FLOORS 7 AND 8 EAST

### G3.56, G3.63 – studio apartment

Living Area	3.45m x 6.35m	11'3" x 20'9"
Bedroom	4.10m x 2.75m	13'5" x 9'0"

### G3.50, G3.57 – 1 bedroom apartment

Kitchen/Living/Dining	4.60m x 6.35m	15'1" x 20'9"
Bedroom	3.45m x 3.90m	11'3" x 12'9"

### G3.51, G3.58 – 1 bedroom apartment

Kitchen/Living/Dining	6.25m x 3.95m	20'6" x 12'11"
Bedroom	3.00m x 4.00m	9'10" x 13'1"

### G3.55, G3.62 – 1 bedroom apartment

Kitchen/Living/Dining	6.25m x 3.90m	20'6" x 12'9"
Bedroom	3.00m x 4.05m	9'10" x 13'3"

### G3.52, G3.59 – 2 bedroom apartment

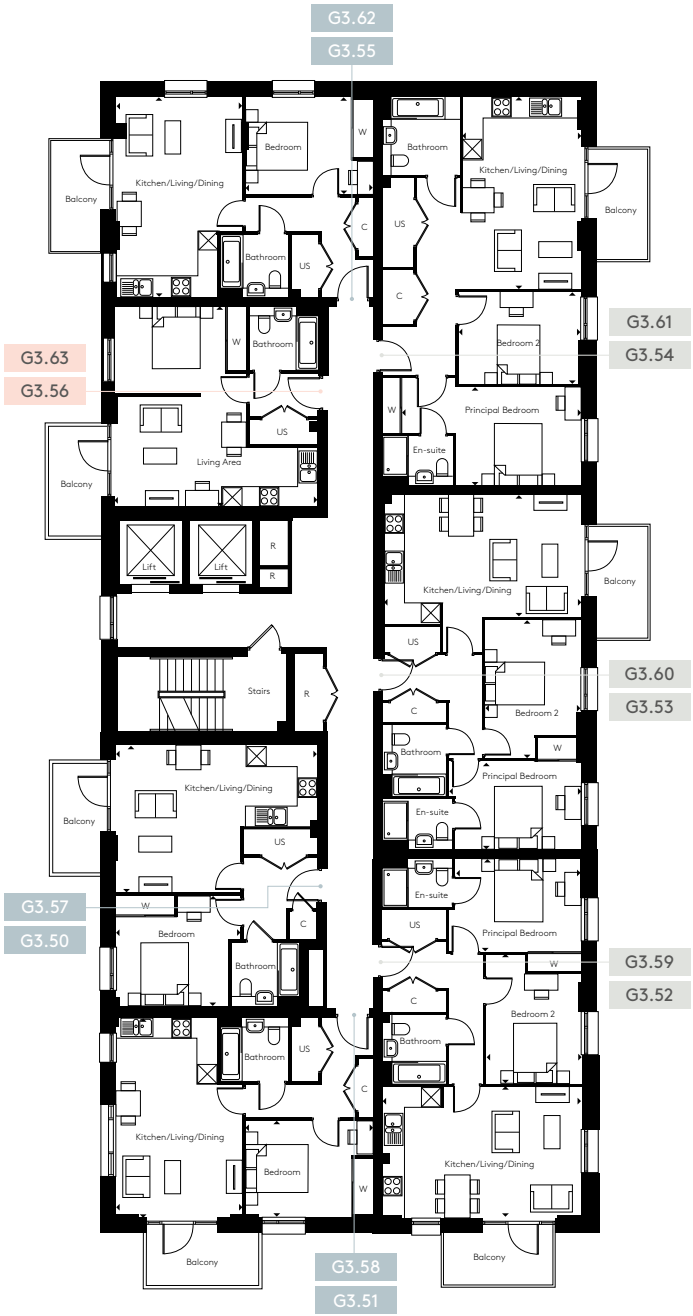
Kitchen/Living/Dining	4.10m x 6.35m	13'5" x 20'9"
Principal Bedroom	2.80m x 4.15m	9'2" x 13'7"
Bedroom 2	4.15m x 2.90m	13'7" x 9'6"

### G3.53, G3.60 – 2 bedroom apartment

Kitchen/Living/Dining	4.05m x 6.15m	13'3" x 20'2"
Principal Bedroom	2.75m x 3.90m	9'0" x 12'9"
Bedroom 2	4.35m x 2.85m	14'3" x 9'4"

### G3.54, G3.61 – 2 bedroom apartment

Kitchen/Living/Dining	6.05m x 3.70m	19'10" x 12'1"
Principal Bedroom	3.05m x 5.60m	10'0" x 18'4"
Bedroom 2	2.85m x 3.80m	9'4" x 12'5"



Studio apartment 1 bedroom apartment 2 bedroom apartment

C = Cupboard W = Wardrobe R = Riser US = Utility Store

Apartment layouts provide approximate measurements only and are subject to planning. Dimensions, which are taken from the indicated points of measurements are for guidance only and are not intended to be used for window treatments or items of furniture. Bathroom and kitchen layouts are indicative only and are subject to change. Wardrobe size and position may vary. The information contained within this document does not constitute part of any offer, contract or warranty. Whilst the plans have been prepared with all due care for convenience of the intending purchaser, the information herein is a preliminary guide only.





# GREEN SQUARE

## DUPLEX APARTMENTS





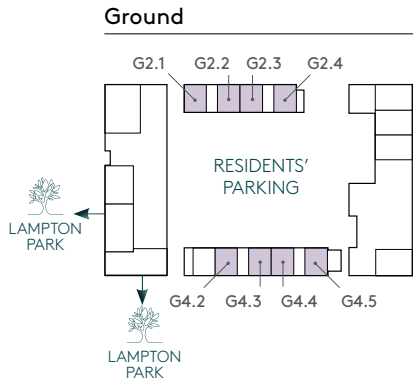
# GREEN SQUARE

## DUPLEX TYPE 1



### G2.1\*, G2.2\*, G2.3†, G2.4\*, G4.2\*, G4.3, G4.4†, G4.5 – 2 bedroom duplex

Kitchen/Dining	5.80m x 2.70m	19'0" x 8'10"
Living Room	3.20m x 3.65m	10'5" x 11'11"
Principal Bedroom	4.05m x 2.75m	13'3" x 9'0"
Bedroom 2	4.90m x 2.75m	16'0" x 9'0"
Podium Garden	7.05m x 6.75m	23'1" x 22'1"



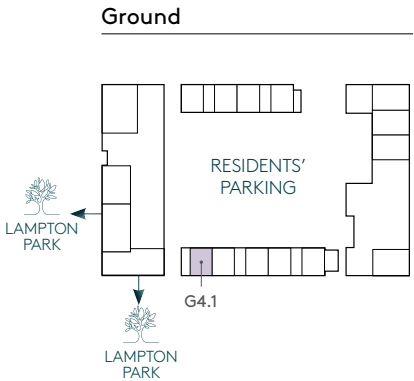
# GREEN SQUARE

## DUPLEX TYPE 2



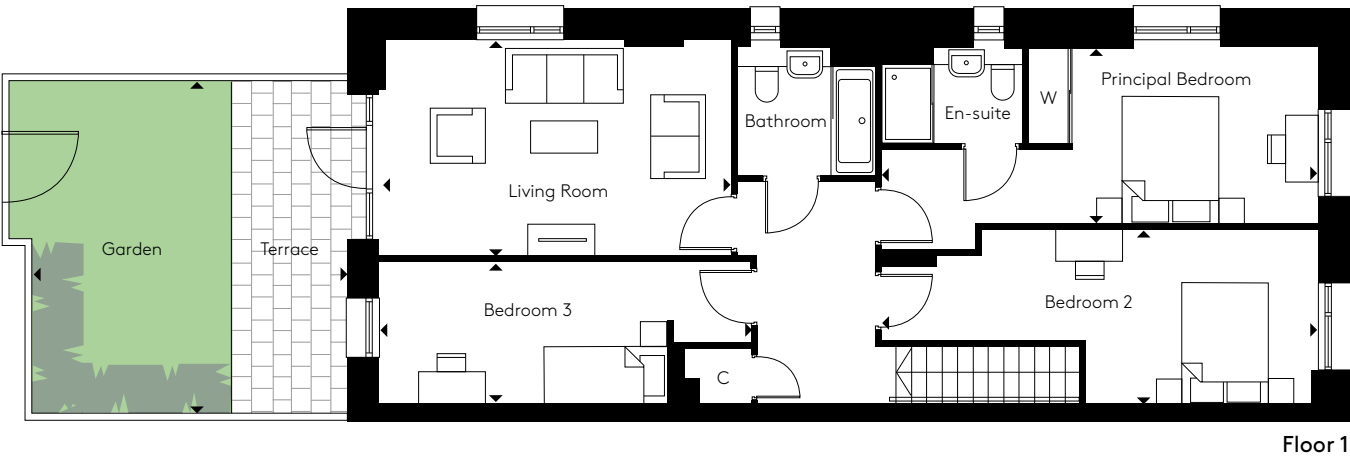
### G4.1 – 2 bedroom duplex

Kitchen/Dining	5.70m x 2.55m	18'8" x 8'4"
Living Room	3.25m x 4.45m	10'7" x 14'7"
Principal Bedroom	3.95m x 2.75m	12'11" x 9'0"
Bedroom 2	4.90m x 2.75m	16'0" x 9'0"
Podium Garden	6.70m x 7.75m	21'11" x 25'5"



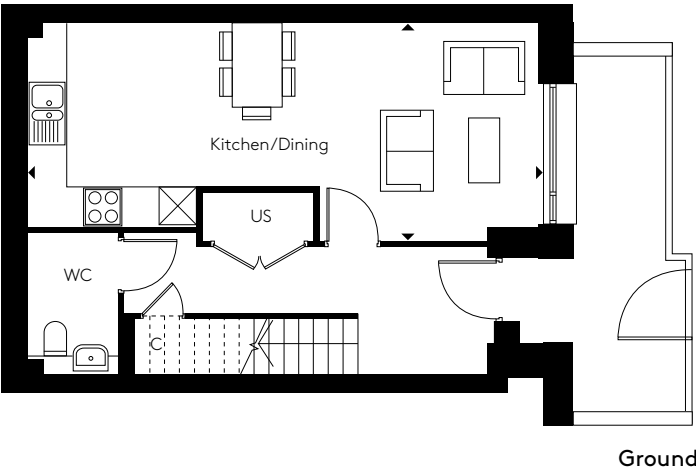
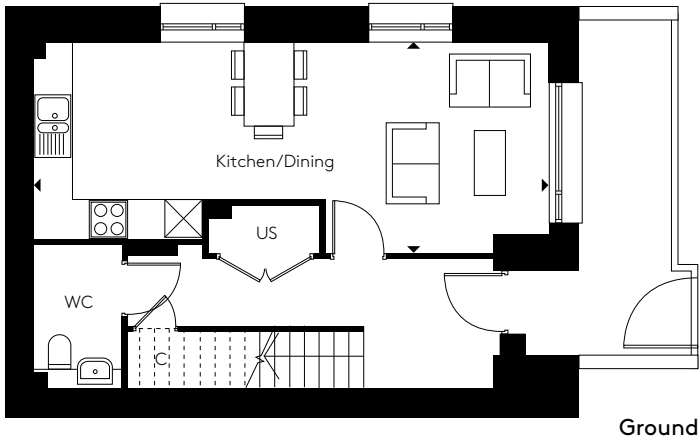
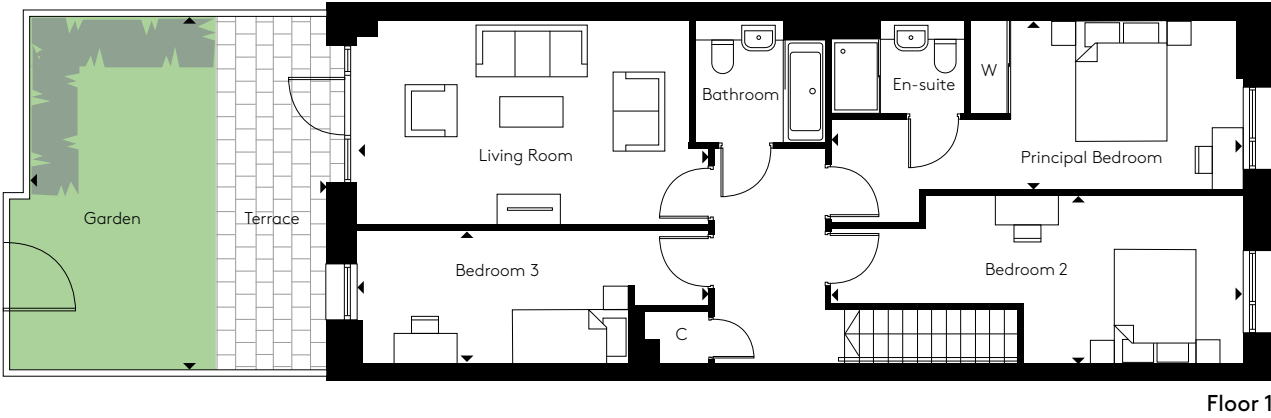
# GREEN SQUARE

## DUPLEX TYPE 3



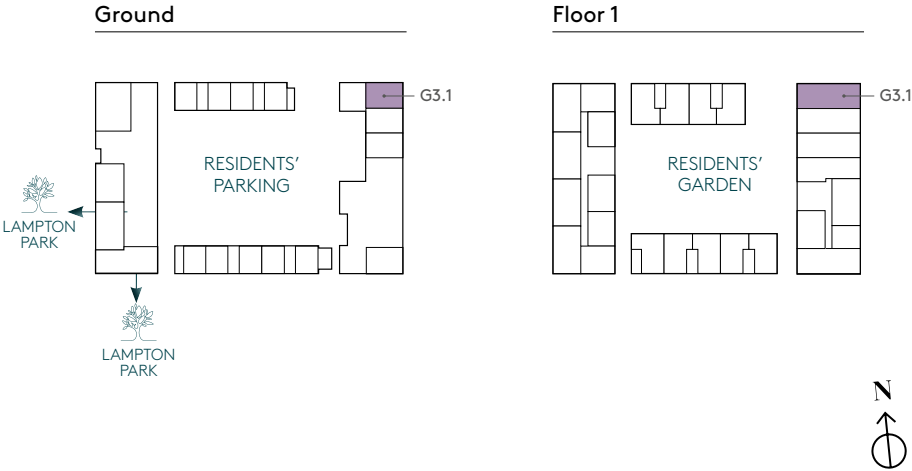
# GREEN SQUARE

## DUPLEX TYPE 4



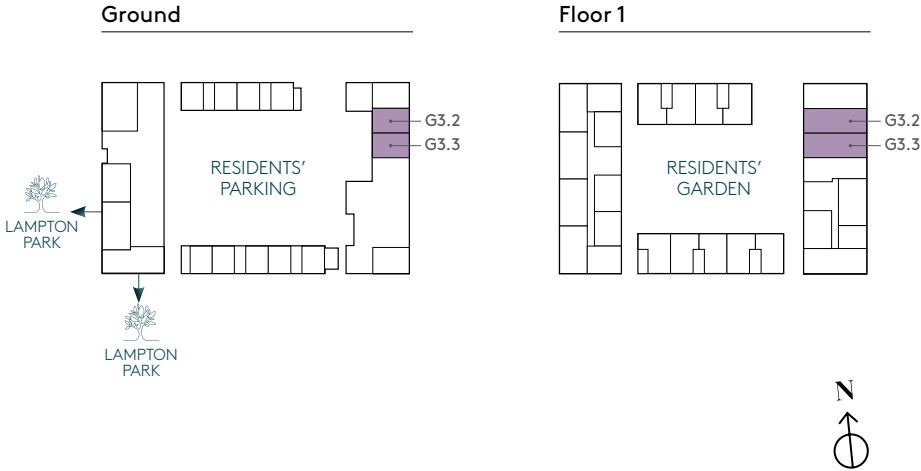
### G3.1 – 3 bedroom duplex

Kitchen/Dining	3.05m x 8.30m	10'0" x 27'2"
Living Room	3.35m x 5.35m	10'11" x 17'6"
Principal Bedroom	2.75m x 6.80m	9'0" x 22'3"
Bedroom 2	2.65m x 6.80m	8'8" x 22'3"
Bedroom 3	2.20m x 5.75m	7'2" x 18'10"
Podium Garden	5.15m x 4.95m	17'8" x 4'9"



### G3.2\*, G3.3 – 3 bedroom duplex

Kitchen/Dining	3.50m x 8.20m	11'5" x 26'10"
Living Room	5.75m x 3.30m	18'10" x 10'9"
Principal Bedroom	2.75m x 6.80m	9'0" x 22'3"
Bedroom 2	2.75m x 6.80m	9'0" x 22'3"
Bedroom 3	5.75m x 2.20m	18'10" x 7'2"
Podium Garden	5.85m x 4.95m	19'2" x 16'2"



\* Handed



# GREEN SQUARE

## DUPLEX TYPE 5



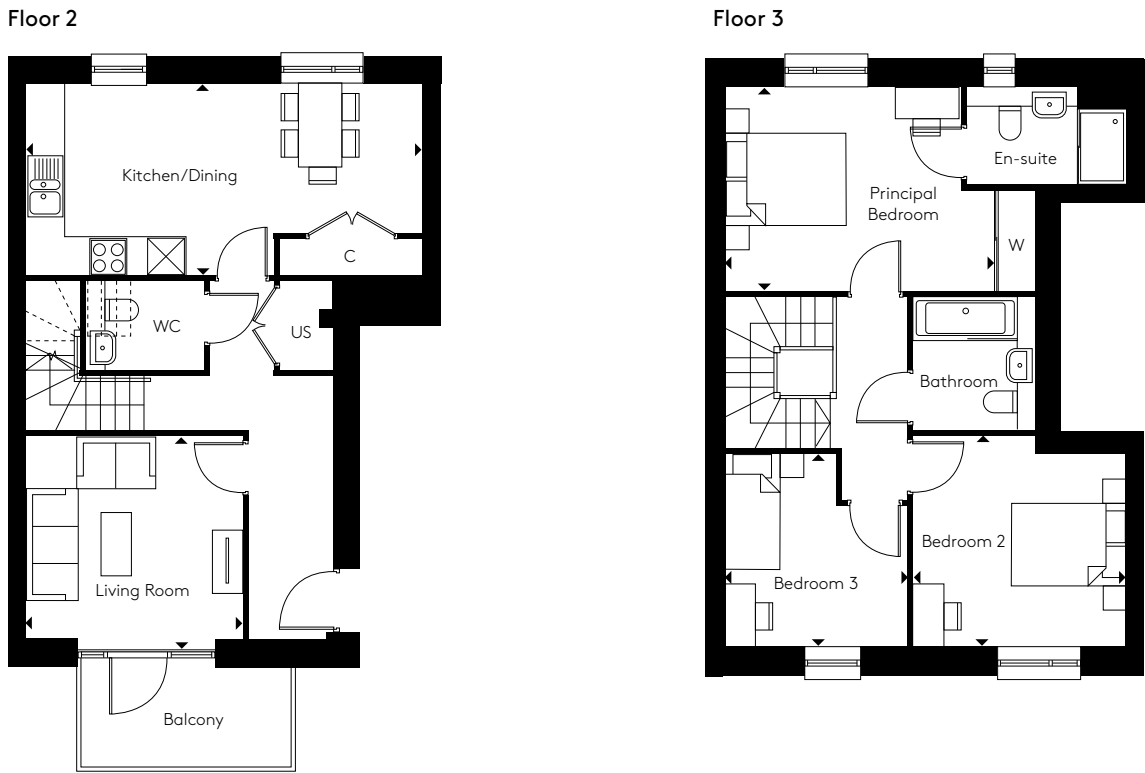
G3.4 – 3 bedroom duplex

Kitchen/Dining	3.60m x 8.30m	11'9" x 27'2"
Living Room	3.25m x 5.75m	10'7" x 18'10"
Principal Bedroom	2.75m x 6.80m	9'0" x 22'3"
Bedroom 2	2.75m x 6.85m	9'0" x 22'5"
Bedroom 3	2.20m x 5.75m	7'2" x 18'10"
Podium Garden	5.40m x 4.80m	16'4" x 15'8"



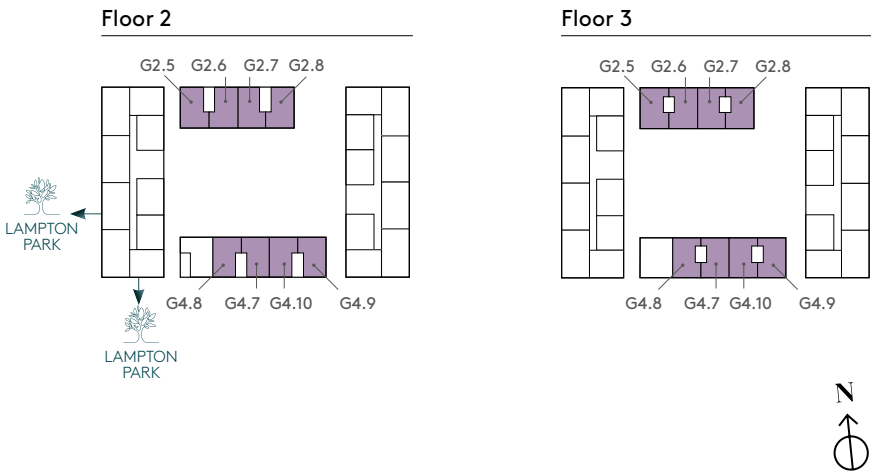
# GREEN SQUARE

## DUPLEX TYPE 6



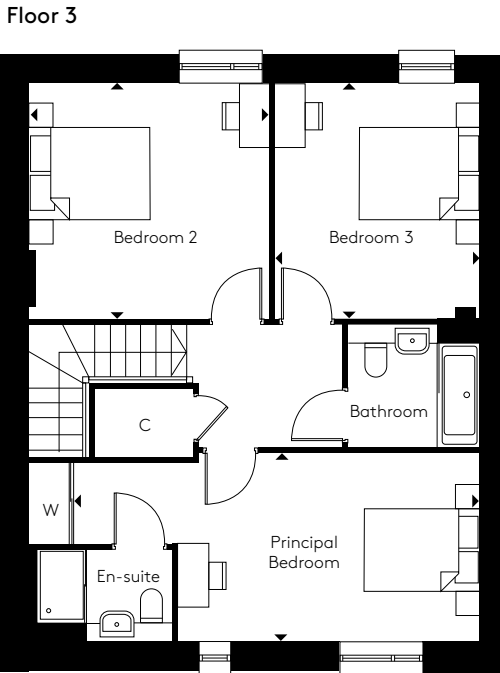
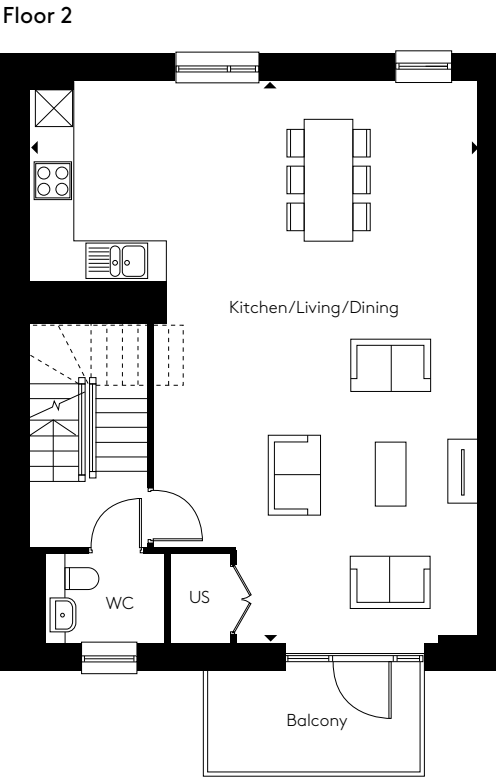
G2.5^, G2.6^, G2.7^, G2.8^, G4.7^, G4.8, G4.9^, G4.10 – 3 bedroom duplex

Kitchen/Dining	3.15m x 6.60m	10'3" x 21'7"
Living Room	3.35m x 3.55m	10'11" x 11'7"
Principal Bedroom	3.30m x 5.00m	10'9" x 16'4"
Bedroom 2	3.45m x 3.40m	11'3" x 11'1"
Bedroom 3	3.15m x 2.95m	10'3" x 9'8"



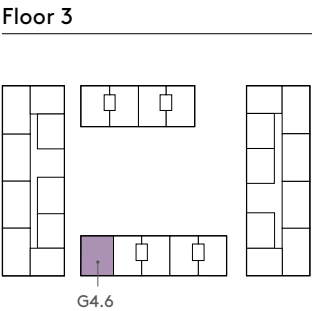
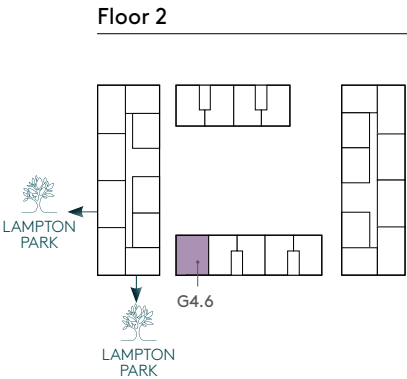
# GREEN SQUARE

## DUPLEX TYPE 7



G4.6 – 3 bedroom duplex

Kitchen/Living/Dining	9.00m x 7.20m	29'6" x 23'7"
Principal Bedroom	3.05m x 7.30m	10'0" x 23'11"
Bedroom 2	3.85m x 3.80m	12'5" x 12'5"
Bedroom 3	3.85m x 3.35m	12'7" x 10'11"



Computer generated image is indicative only.







# WORKING TOGETHER TO CREATE OUTSTANDING HOMES

LAMPTON PARKSIDE IS A VISIONARY COLLABORATION  
BETWEEN HILL AND NOTTING HILL GENESIS, BRINGING TOGETHER  
FIVE STAR HOUSEBUILDING WITH A COMMITMENT TO MAINTAINING  
A DIVERSE AND THRIVING COMMUNITY.



Hill is an award-winning housebuilder and one of the leading developers in London and the south east of England, delivering both private for sale and affordable homes.

This family-owned and operated company has grown to establish itself as the UK's third largest privately owned housebuilder, with an impressive and diverse portfolio ranging from landmark mixed use regeneration schemes and inner-city apartments to homes set in idyllic countryside.

Hill prides itself on putting its customers first and was awarded a 5 star status from the Home Builders Federation's annual Customer Satisfaction Survey in 2018, 2019, 2020 and 2021. Hill has also won over 450 industry awards in the past 20 years, for developments such as Knights Park, Mosaics and Ironworks.

In 2019, Hill Group designed and is donating 200 fully equipped modular homes to homelessness charities as part of a £12 million pledge through its Foundation 200 initiative.



At Notting Hill Genesis, we build and maintain quality affordable homes, creating diverse and thriving communities.

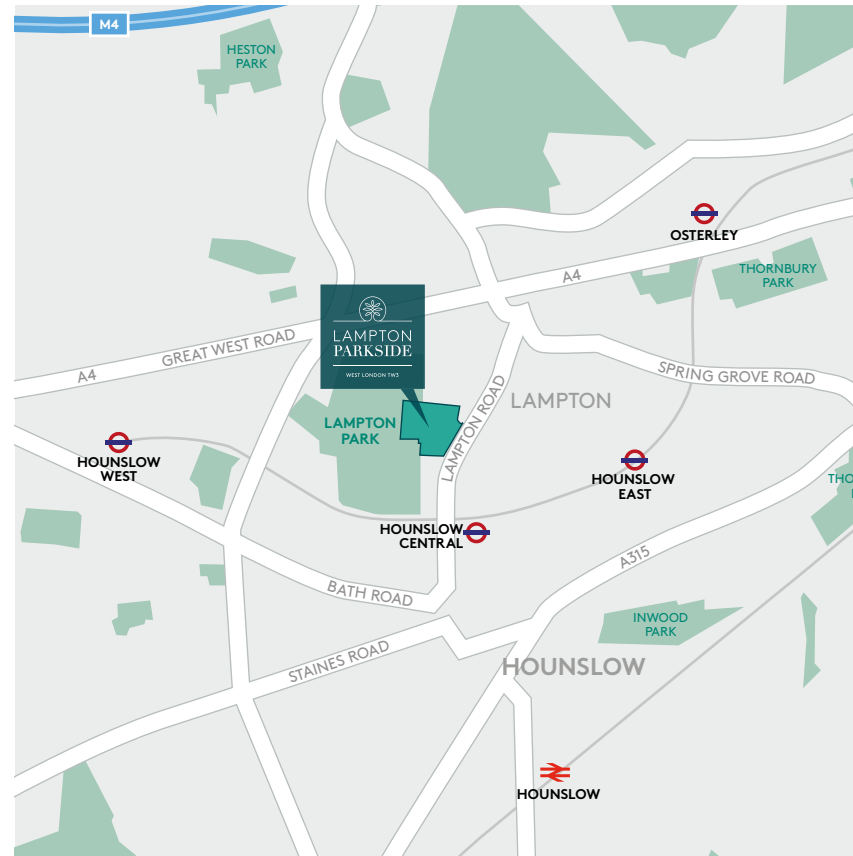
Notting Hill Genesis are one of the largest housing associations in London and the south-east, owning and managing more than 66,000 homes. We provide homes across a range of tenures, are a leading provider of Shared Ownership, and are committed to realising our vision, which is to provide homes that build a better place for all.

Our focus is our customers. We put their needs at the heart of our structures, processes and systems and they drive our decisions each and every day. We want them to be proud of the place they call home and from where they can begin to build lives, communities and futures.





# HOW TO FIND US



Lampton Parkside Sales Suite  
Lampton Road  
TW3 4FD

020 3959 0900  
[lamptonparkside.co.uk](http://lamptonparkside.co.uk)

This brochure, and the description and measurements herein, do not form any part of a contract. Whilst every effort has been made to ensure accuracy, this cannot always be guaranteed. Site layouts, and specifications are taken from drawings which were correct at the time of print. The information and imagery contained in this brochure is for guidance purposes only and does not constitute a contract, part of contract or warranty. Images of the Lampton Parkside properties are computer generated and the landscaping may have been enhanced. Details correct at time of going to print.

[lamptonparkside.co.uk](http://lamptonparkside.co.uk)

A UNIQUE COLLABORATION BETWEEN

---

