

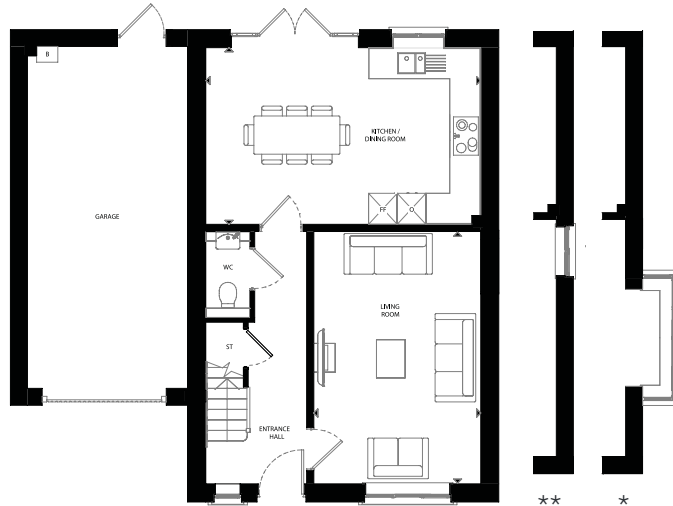
Ground Floor

Kitchen/Dining Room

5.75m x 3.70m | 18'10" x 12'1"

Living Room

3.50m x 5.25m | 11'5" x 17'2"



First Floor

Principal Bedroom

3.30m x 4.55m | 10'9" x 14'11"

Bedroom 2

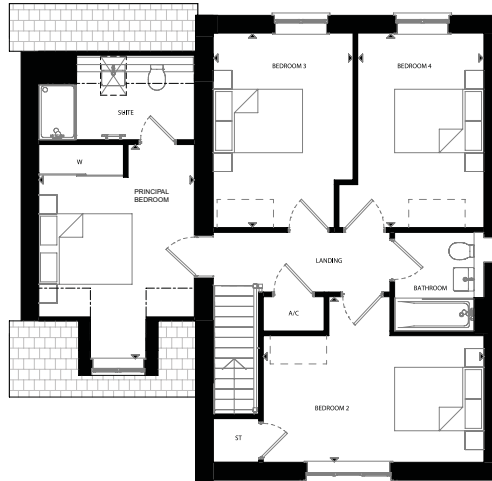
4.70m x 3.50m | 15'5" x 11'5"

Bedroom 3

2.95m x 4.10m | 9'8" x 13'5"

Bedroom 4

2.65m x 4.10m | 8'8" x 13'5"



A/C – Airing Cupboard B – Boiler FF – Fridge/Freezer O – Tall Oven Unit ST – Storage Cupboard
W – Built-in Wardrobe --- – Wardrobe Position WC – Cloakroom

Plots 87 & 98 are handed. *Bay window to plots 111. **Side window to plot 87.

Layouts provide approximate measurements only and are subject to planning. Dimensions, which are taken from the indicated points of measurement, are for guidance only and are not intended to be used for window treatments or items of furniture. Bathroom and kitchen layouts are indicative only and are subject to change. Wardrobe size and position may vary. The information contained within this document does not constitute part of any offer, contract or warranty. Whilst the plans have been prepared with all due care for the convenience of the intending purchaser, the information contained herein is a preliminary guide only. September 2021.