

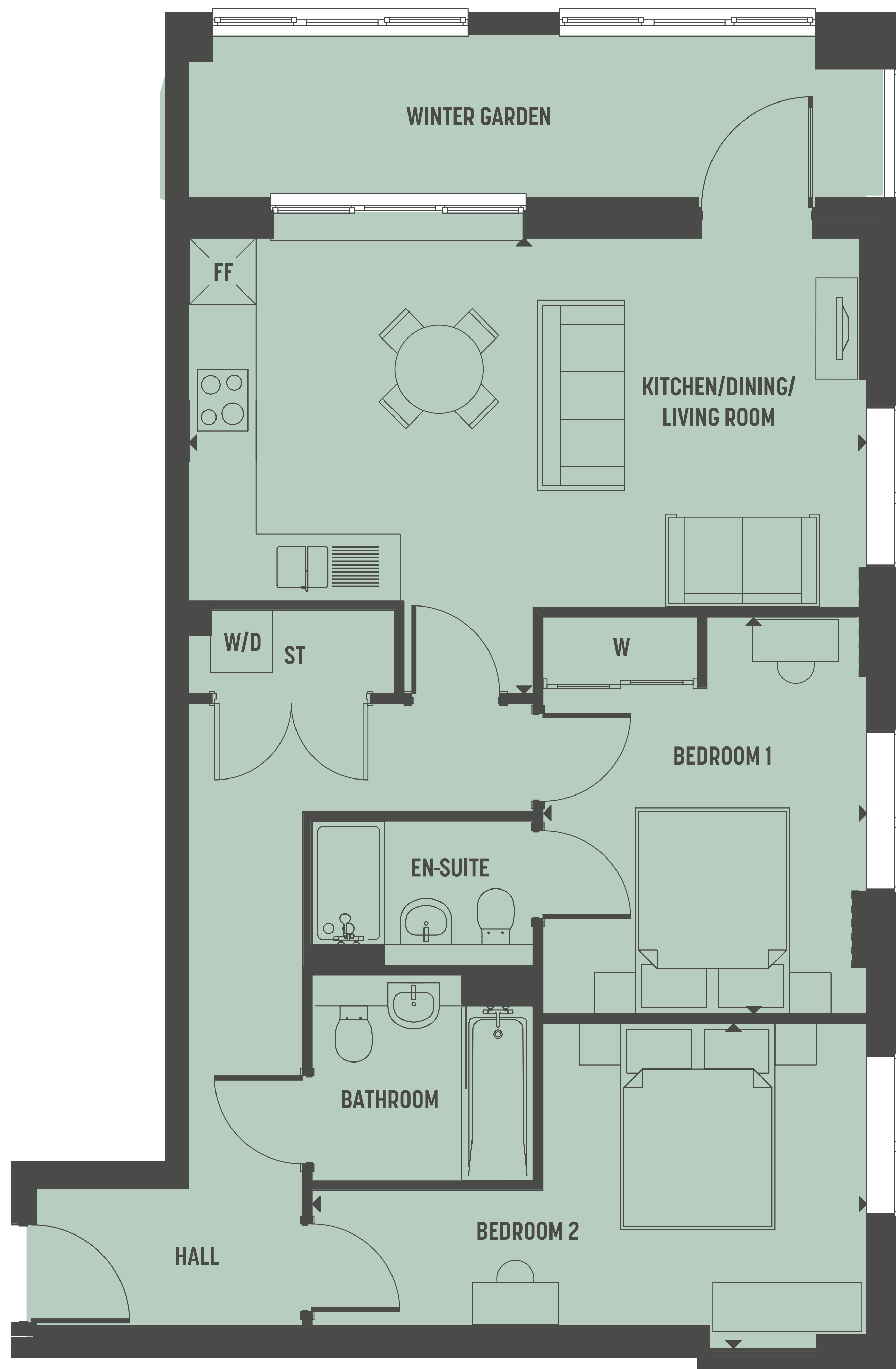
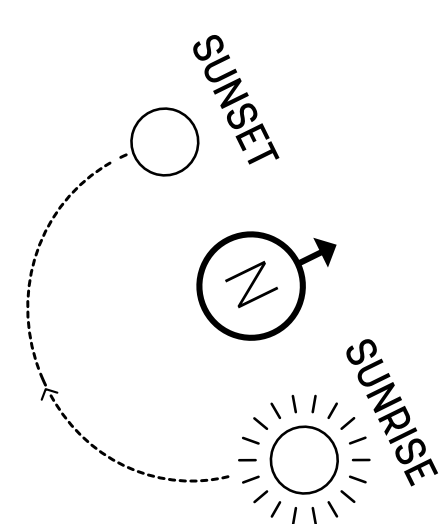
# THE CHERRY BLOSSOM BUILDING

**TIMBER  
WORKS**

CROMWELL ROAD - ROMSEY CB1

## PLOT E50 - 2 BEDROOM

## SIXTH FLOOR



PLOT E50 - 2 BEDROOM	M	FT
KITCHEN/DINING/LIVING ROOM	6.58 X 4.42	21'7 X 14'6
BEDROOM 1	3.14 X 3.84	10'3 X 12'7
BEDROOM 2	5.38 X 3.15	17'7 X 10'4

W = WARDROBE   
 W/D = WASHER DRYER   
 ST = STORAGE   
 ▶ = MEASURING POINTS   
 FF = FRIDGE FREEZER

