



# THE CORNFLOWER

PLOTS 28\*, 29, 39\*, 76\*, 77, 81\*, 82, 89\*, 107, 108, 109\*, 121\*, 122\*, 123 & 124

3 BEDROOM HOUSE\*\*

## GROUND FLOOR

Kitchen / Dining Room  
3.85m x 5.40m 12'7" x 17'8"

Living Room  
5.00m x 3.80m 16'4" x 12'5"

## FIRST FLOOR

Master Bedroom  
2.85m x 3.15m 9'4" x 10'4"

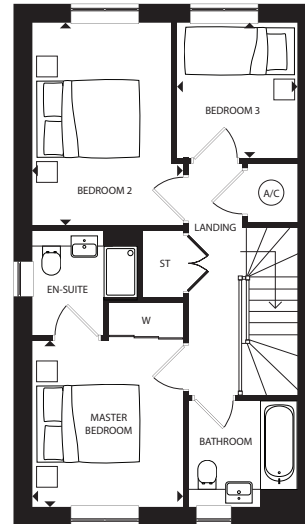
Bedroom 2  
2.85m x 3.80m 9'4" x 12'5"

Bedroom 3  
2.05m x 2.00m 6'8" x 6'6"

\* Plots 28, 39, 76, 81, 89, 109, 121 & 122 are handed to floor plans shown. Measurements are maximum dimensions.

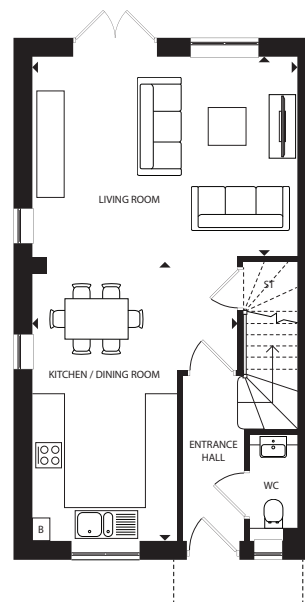
\*\* Plots 121\*, 122\*, 123 & 124 are terraced. Plots 28\*, 29, 34, 39\*, 76\*, 77, 81\*, 82, 89\*, 108 & 109\* are semi-detached. Plot 107 is detached.

External materials vary between plots. Please speak to our sales team for more information. Layouts provide approximate measurements only and are subject to planning. Dimensions, which are taken from the indicated points of measurement, are for guidance only and are not intended to be used for window treatments or items of furniture. Bathroom and kitchen layouts are indicative only and are subject to change. Wardrobe size and position may vary. The information contained within this document does not constitute part of any offer, contract or warranty. Whilst the plans have been prepared with all due care for the convenience of the intending purchaser, the information contained herein is a preliminary guide only.



Window for plots 76\*, 107 & 121\* only

FIRST FLOOR



Window for plots 76\*, 107 & 121\* only

Window omitted from plots 77, 89\*, 109\*, 122\*, 123 & 124

GROUND FLOOR

ST - STORAGE CUPBOARD W - WARDROBE B - BOILER A/C - AIRING CUPBOARD