



# RAYNERS GREEN

FORDHAM

## THE HORNBEAM

PLOTS 67, 89\* & 96\*

4 BEDROOM  
DETACHED HOUSE

### GROUND FLOOR

Kitchen / Breakfast Room  
5.50m x 4.10m 18'0" x 13'5"

Living / Dining Room  
3.40m x 7.45m 11'2" x 24'4"

Study  
2.45m x 3.20m 8'0" x 10'5"

### FIRST FLOOR

Master Bedroom  
3.45m x 3.90m 11'3" x 12'8"

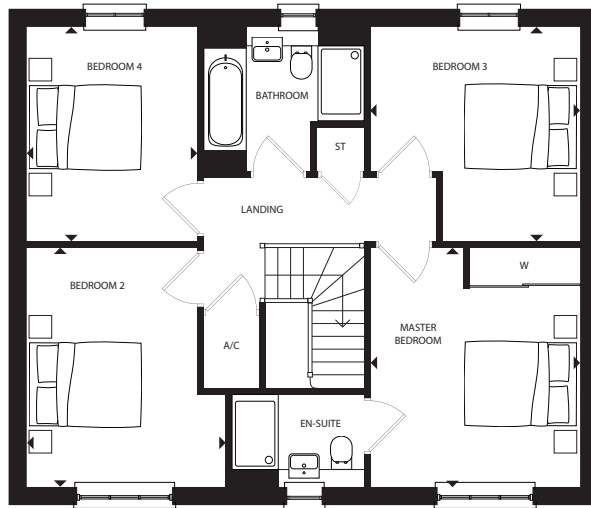
Bedroom 2  
3.25m x 3.90m 10'7" x 12'8"

Bedroom 3  
3.45m x 3.45m 11'3" x 11'3"

Bedroom 4  
2.75m x 3.45m 9'0" x 11'3"

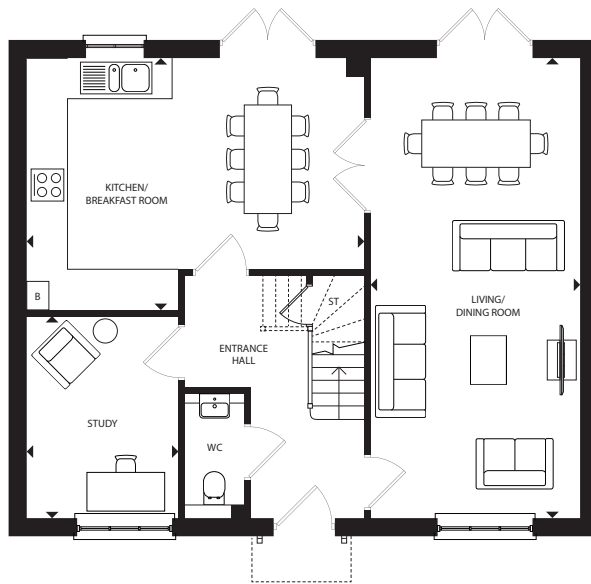
\* Plots 89 & 96 are handed to floor plans shown.

Layouts provide approximate measurements only and are subject to planning. Dimensions, which are taken from the indicated points of measurement, are for guidance only and are not intended to be used for window treatments or items of furniture. Bathroom and kitchen layouts are indicative only and are subject to change. Wardrobe size and position may vary. The information contained within this document does not constitute part of any offer, contract or warranty. Whilst the plans have been prepared with all due care for the convenience of the intending purchaser, the information contained herein is a preliminary guide only.



FIRST FLOOR

Plots 67 & 89\* feature an alternative window layout



GROUND FLOOR

Plots 67 & 89\* feature an alternative window layout

ST - STORAGE CUPBOARD W - WARDROBE B - BOILER A/C - AIRING CUPBOARD

A proud collaboration between

