

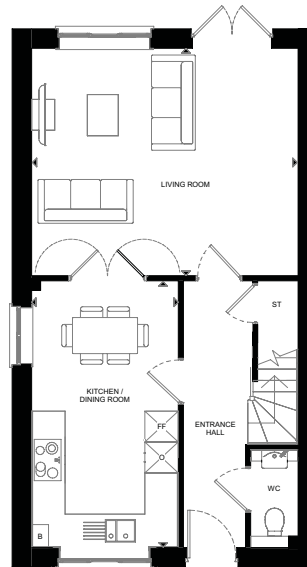
## Ground Floor

### Kitchen/Dining Room

2.85m x 5.15m | 9'4" x 16'10"

### Living Room

5.15m x 4.40m | 16'10" x 14'5"



## First Floor

### Principal Bedroom

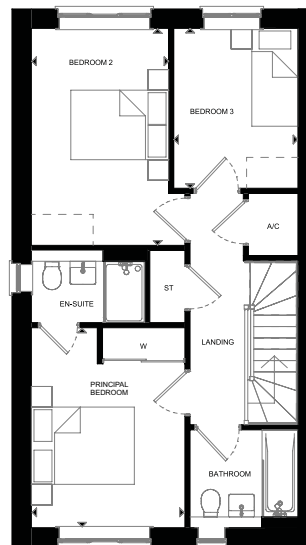
2.95m x 3.85m | 9'8" x 12'7"

### Bedroom 2

2.65m x 4.20m | 8'8" x 13'9"

### Bedroom 3

2.40m x 3.10m | 7'10" x 10'2"



A/C – Airing Cupboard B – Boiler FF – Fridge/Freezer O – Tall Oven Unit ST – Storage Cupboard  
W – Built-in Wardrobe --- – Wardrobe Position WC – Cloakroom

Plots 63, 68, 119, 124, 126 & 144 are handed. Plots 64, 69, 119, 120, 124, 125, 126, 143, 144 have a detached single garage.

Layouts provide approximate measurements only and are subject to planning. Dimensions, which are taken from the indicated points of measurement, are for guidance only and are not intended to be used for window treatments or items of furniture. Bathroom and kitchen layouts are indicative only and are subject to change. Wardrobe size and position may vary. The information contained within this document does not constitute part of any offer, contract or warranty. Whilst the plans have been prepared with all due care for the convenience of the intending purchaser, the information contained herein is a preliminary guide only. September 2021.