

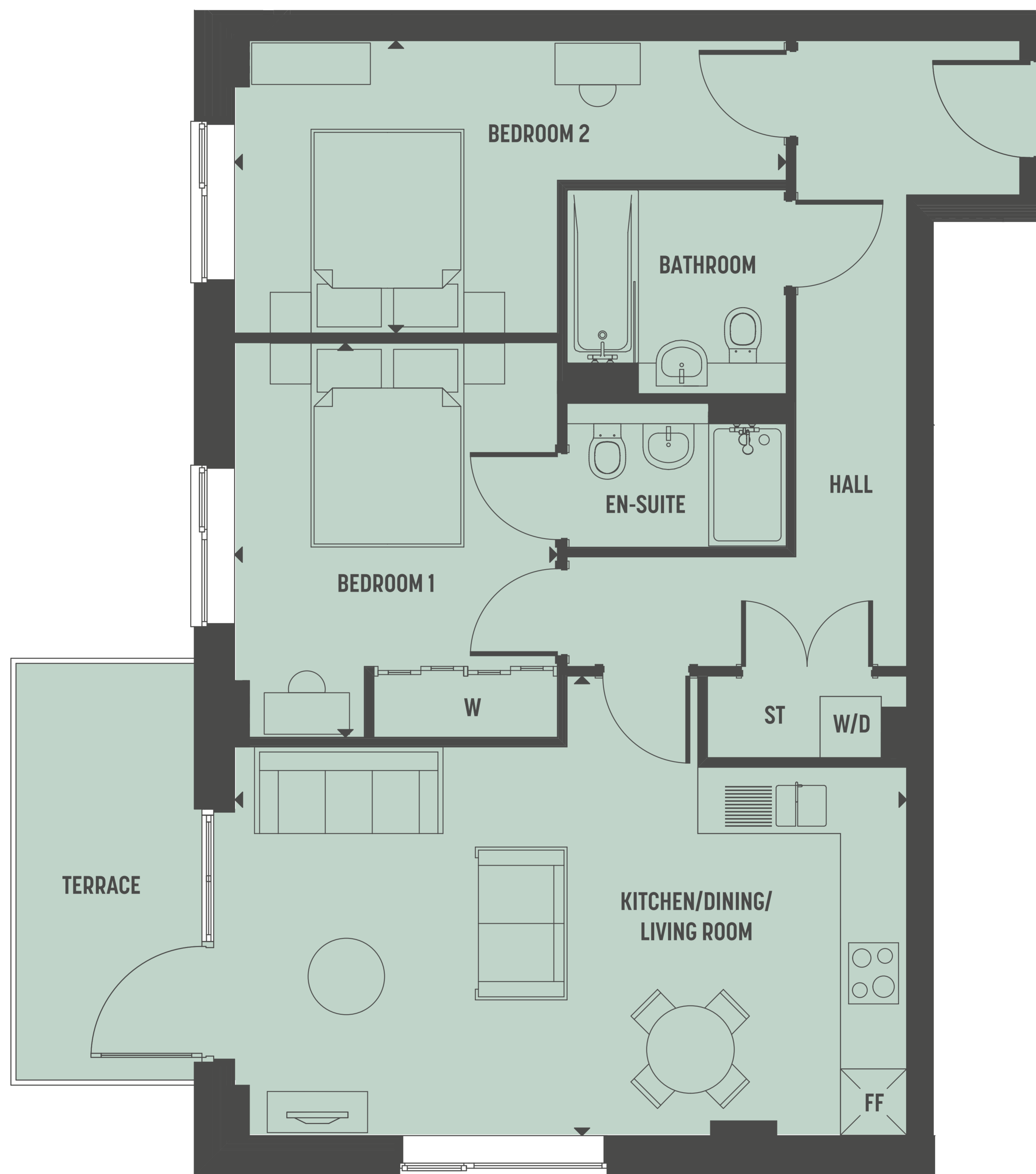
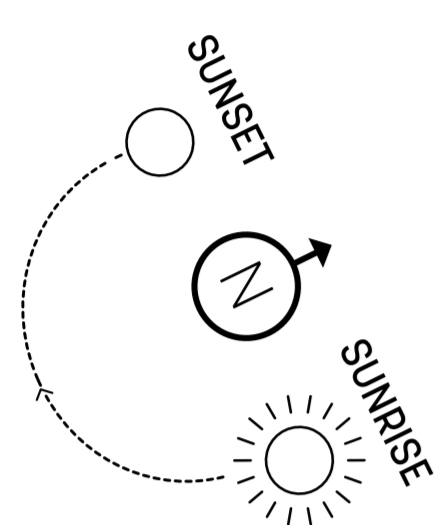
# THE CHERRY BLOSSOM BUILDING

**TIMBER  
WORKS**

CROMWELL ROAD - ROMSEY CB1

**PLOT E3 - 2 BEDROOM**

**GROUND FLOOR**



## PLOT E3 - 2 BEDROOM

	M	FT
KITCHEN/DINING/LIVING ROOM	6.59 X 4.51	21'7 X 14'9
BEDROOM 1	3.16 X 3.87	10'4 X 12'8
BEDROOM 2	5.41 X 2.86	17'8 X 9'4

W = WARDROBE   
 W/D = WASHER DRYER   
 ST = STORAGE   
 ▶ = MEASURING POINTS   
 FF = FRIDGE FREEZER

