

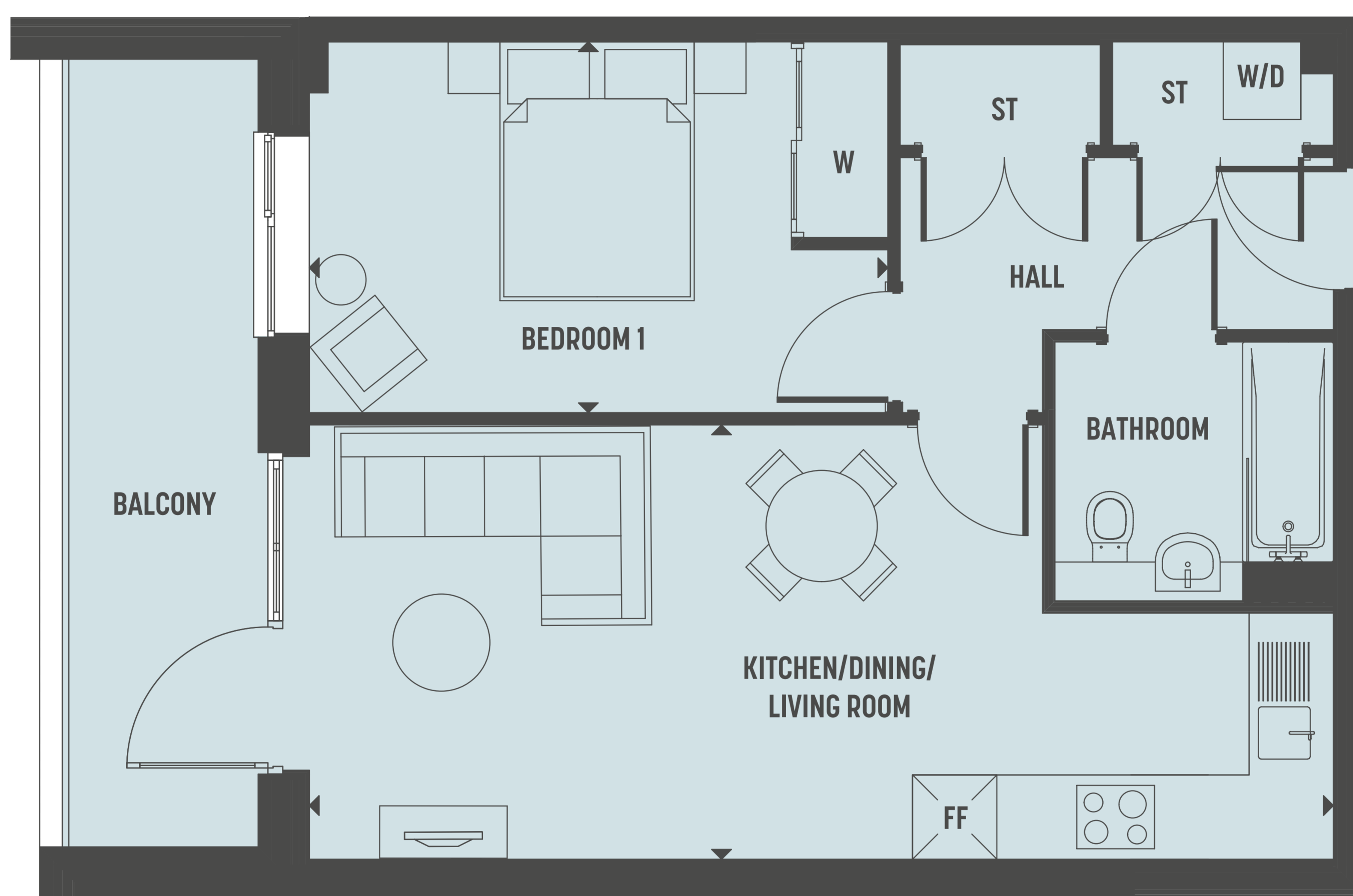
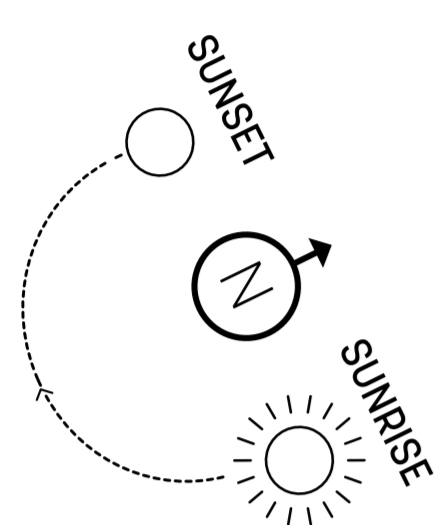
THE CHERRY BLOSSOM BUILDING

**TIMBER
WORKS**

CROMWELL ROAD - ROMSEY CB1

PLOT E17 - 1 BEDROOM

SECOND FLOOR



PLOT E17 - 1 BEDROOM

	M	FT
KITCHEN/DINING/LIVING ROOM	7.90 X 3.35	25'11 X 10'11
BEDROOM 1	4.46 X 2.86	14'7 X 9'4

W = WARDROBE
 W/D = WASHER DRYER
 ST = STORAGE
 ▶ = MEASURING POINTS
 FF = FRIDGE FREEZER

