

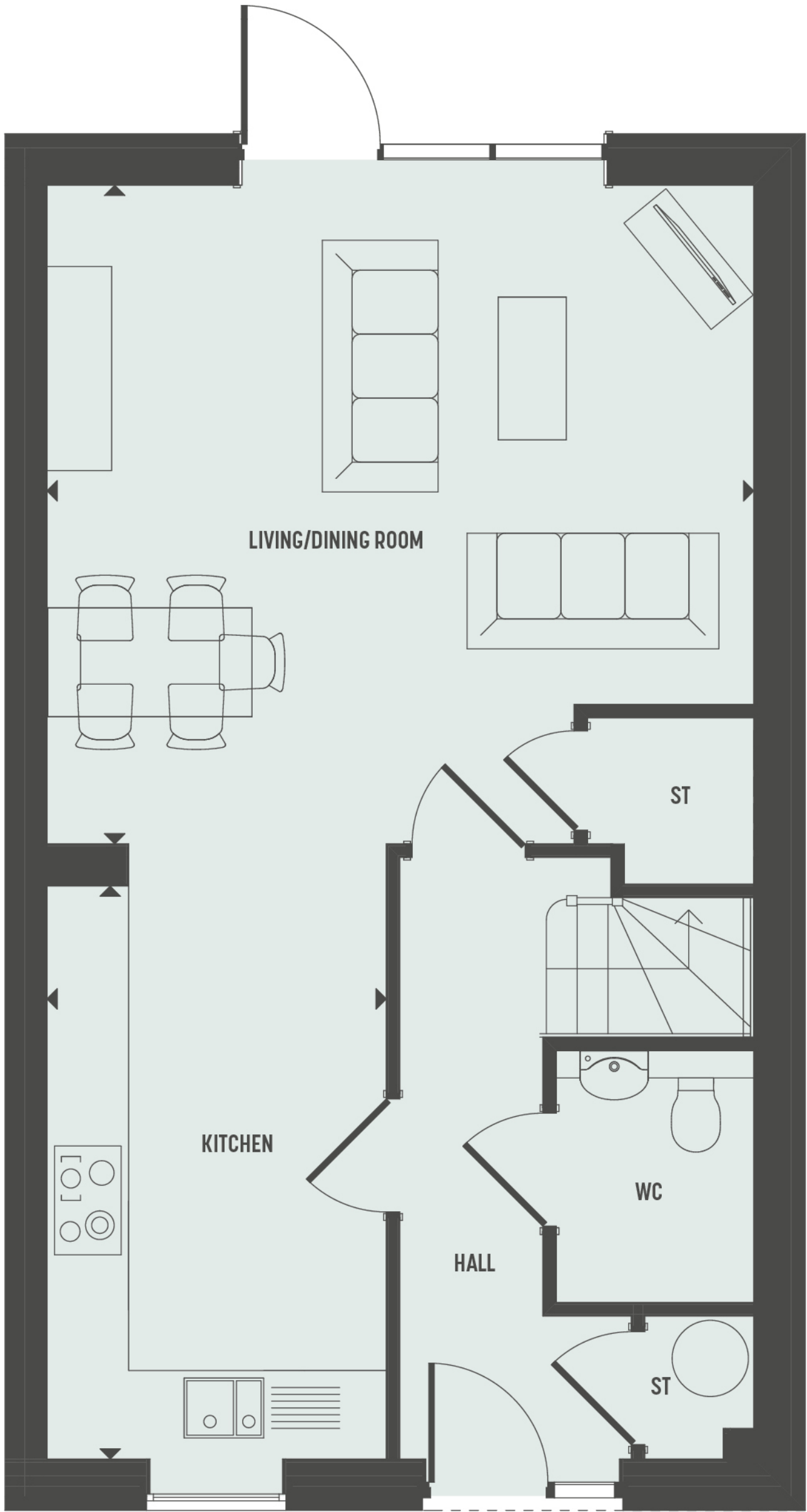
THE ALDER

PLOT 63

3 BEDROOMS

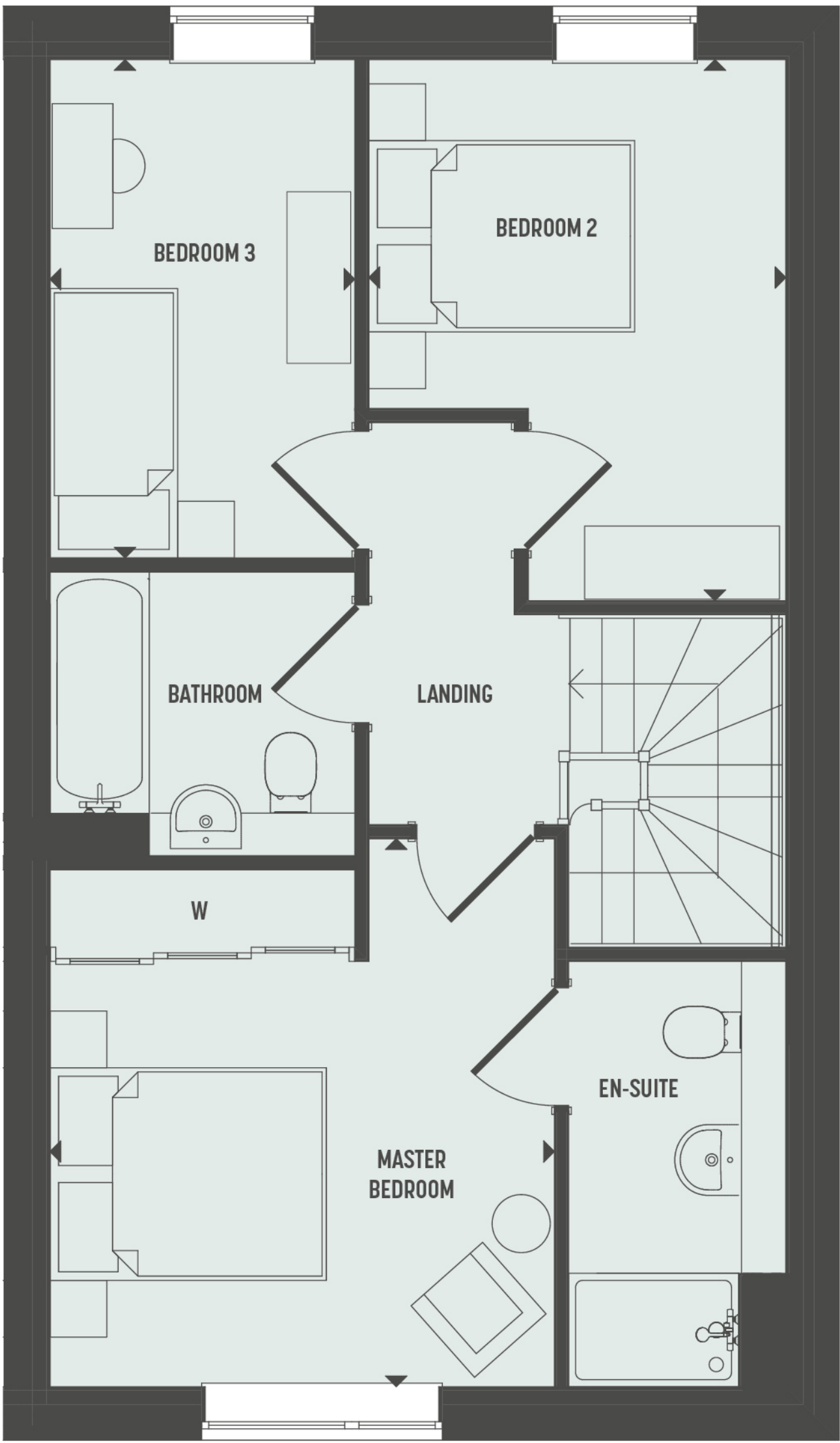
TIMBER
WORKS

CROMWELL ROAD - ROMSEY CB1



GROUND FLOOR

KITCHEN	2.45m x 4.20m	8'0" x 13'7"
LIVING/DINING ROOM	5.15m x 4.80m	16'8" x 15'7"



FIRST FLOOR

MASTER BEDROOM	3.55m x 3.85m	11'6" x 12'6"
BEDROOM 2	2.90m x 3.80m	9'5" x 12'4"
BEDROOM 3	2.15m x 3.50m	7'0" x 11'4"

- W

= WARDROBE
- ST

= STORAGE
- ▶

= MEASURING POINTS
- = LOFT HATCH
- = ROOF LIGHT

