



# RAYNERS GREEN

FORDHAM

## THE YEW

PLOTS 22\*, 23, 59\*,  
60, 79\* & 80

3 BEDROOM  
SEMI-DETACHED HOUSE

### GROUND FLOOR

Kitchen / Dining Room  
4.00m x 5.40m 13'1" x 17'7"

Living Room  
5.05m x 4.20m 16'6" x 13'8"

### FIRST FLOOR

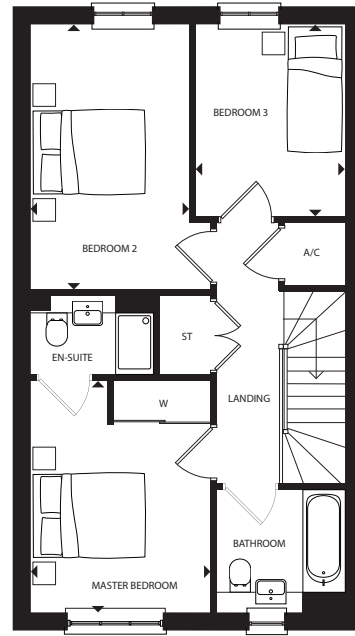
Master Bedroom  
2.90m x 3.80m 9'5" x 12'5"

Bedroom 2  
2.60m x 4.30m 8'5" x 14'1"

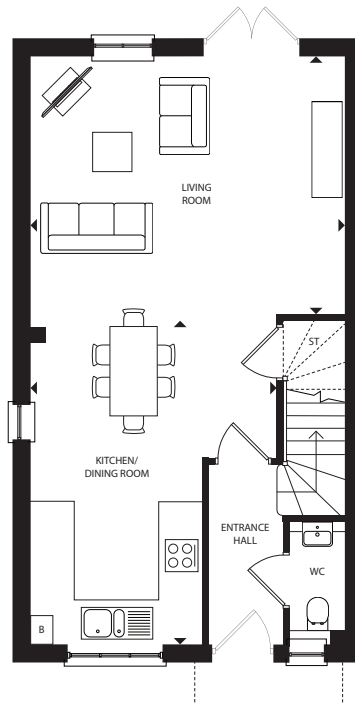
Bedroom 3  
2.35m x 3.10m 7'7" x 10'2"

*\* Plots 22, 59 & 79 are handed to floor plans shown.*

Layouts provide approximate measurements only and are subject to planning. Dimensions, which are taken from the indicated points of measurement, are for guidance only and are not intended to be used for window treatments or items of furniture. Bathroom and kitchen layouts are indicative only and are subject to change. Wardrobe size and position may vary. The information contained within this document does not constitute part of any offer, contract or warranty. Whilst the plans have been prepared with all due care for the convenience of the intending purchaser, the information contained herein is a preliminary guide only.



FIRST  
FLOOR



GROUND  
FLOOR

ST - STORAGE CUPBOARD W - WARDROBE B - BOILER A/C - AIRING CUPBOARD

A proud collaboration between

  
Scotsdales

  
Created for Living