



# RAYNERS GREEN

FORDHAM

## THE ROWAN

PLOTS 44\*, 45, 46\*, 47, 50\*, 51, 74\*, 75, 85\*, 86, 87\* & 88

3 BEDROOM SEMI-DETACHED HOUSE

### GROUND FLOOR

Kitchen / Breakfast Room  
3.55m x 4.35m 11'6" x 14'3"

Living / Dining Room  
6.10m x 4.00m 20'0" x 13'1"

### FIRST FLOOR

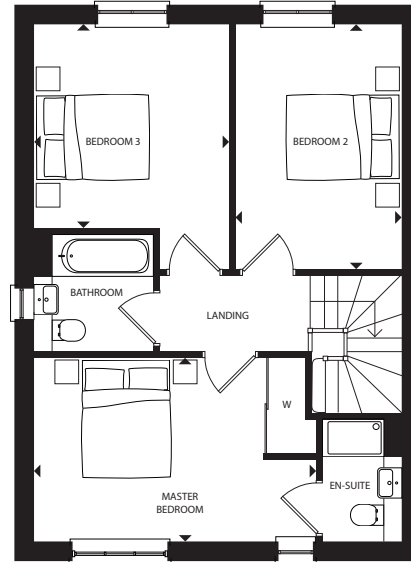
Master Bedroom  
4.70m x 3.00m 15'4" x 9'8"

Bedroom 2  
2.80m x 4.05m 9'2" x 13'3"

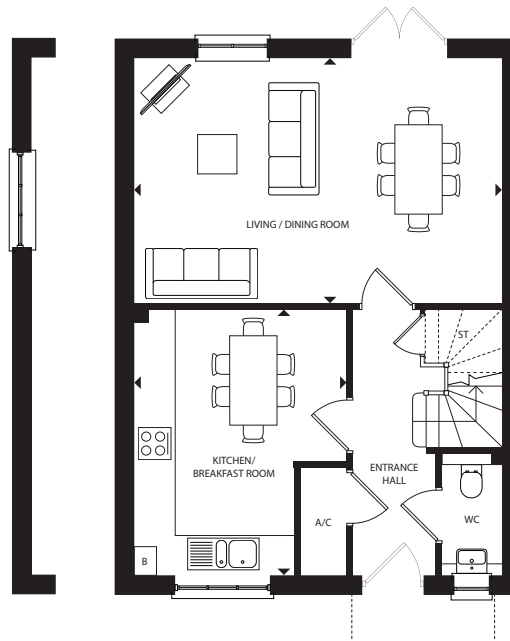
Bedroom 3  
3.15m x 3.30m 10'3" x 10'8"

*\* Plots 44, 46, 50, 74, 85 & 87 are handed to floor plans shown.*

Layouts provide approximate measurements only and are subject to planning. Dimensions, which are taken from the indicated points of measurement, are for guidance only and are not intended to be used for window treatments or items of furniture. Bathroom and kitchen layouts are indicative only and are subject to change. Wardrobe size and position may vary. The information contained within this document does not constitute part of any offer, contract or warranty. Whilst the plans have been prepared with all due care for the convenience of the intending purchaser, the information contained herein is a preliminary guide only.



FIRST FLOOR



GROUND FLOOR

ST - STORAGE CUPBOARD W - WARDROBE B - BOILER A/C - AIRING CUPBOARD

A proud collaboration between

