

PULLMAN BUILDING

APARTMENT 70

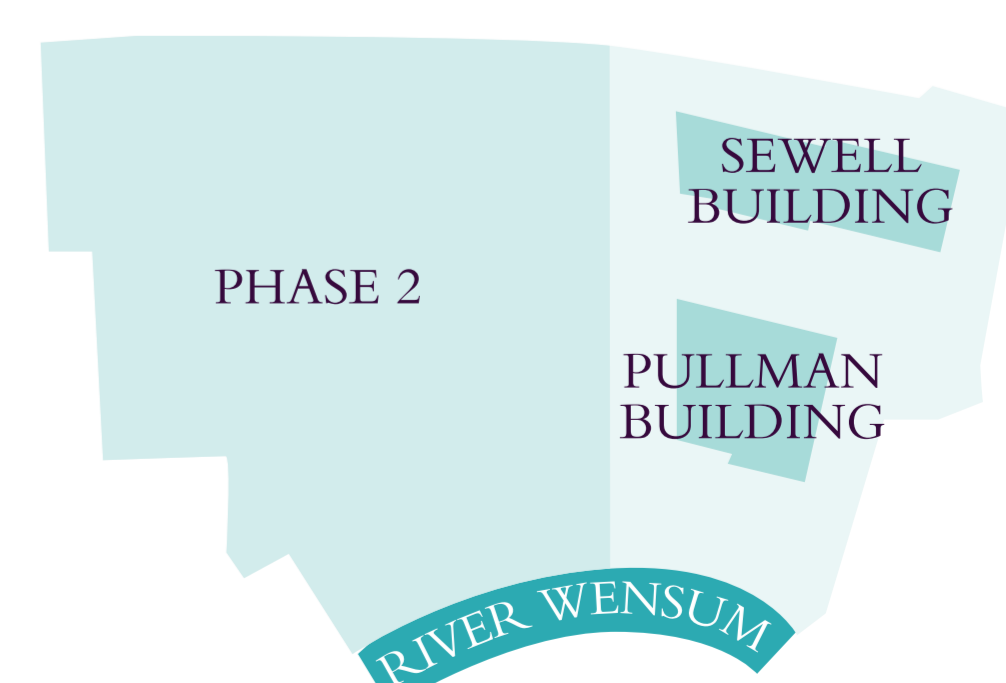
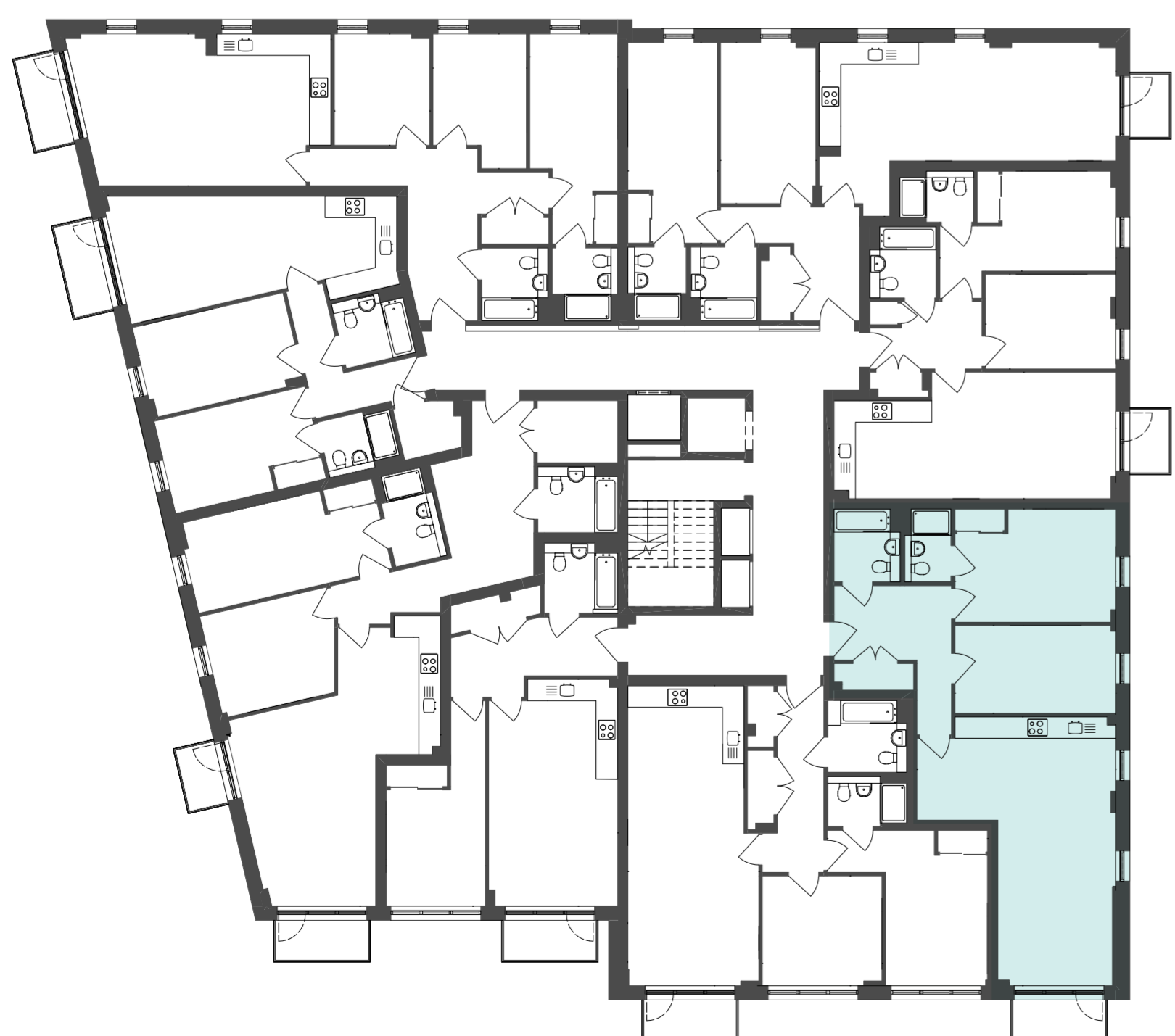
TWO BEDROOM – THIRD FLOOR



Kitchen / Living / Dining Room
5.95m x 8.10m 19'5" x 26'6"

Bedroom 1
4.85m x 3.40m 15'9" x 11'2"

Bedroom 2
4.85m x 2.65m 15'9" x 8'7"



W - Wardrobe