



# MARLEIGH

Elegantly Engineered Living



Computer generated image is indicative only.

**The Kingsley Building**

# Modern apartment living at Marleigh

---

Designed to the highest quality, these stunning apartments are ideal for modern living. Featuring a spacious layout and contemporary interiors, they have been built with both style and convenience in mind.

Each apartment has been beautifully finished throughout and carefully considered for contemporary living, with details such as the underfloor heating, giving you radiator-free walls and the room to really maximise your living space. Designed with energy efficient appliances, double-glazed windows and high levels of insulation, you'll have a comfortable, low-energy home that is better for you and the environment.

The Kingsley Building is located right at the heart of Marleigh, next to the market square. The ground floor benefits from fantastic retail space, which is adjoined the community centre, a nursery and space for a café whilst residents parking, complete with electric car charging points, is located below the podium garden. With all this on your doorstep you can be at the heart of the action, or escape the hustle and bustle in the landscaped podium garden, or your own private terrace or balcony.

Proudly brought to you by



# Elegantly engineered living



Computer generated image is indicative only.

# Ground floor



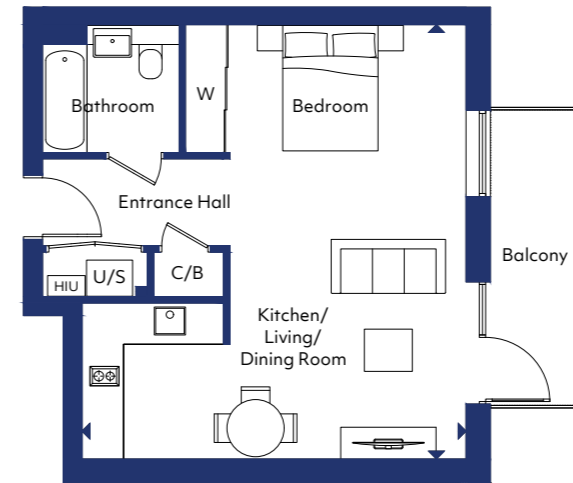
Marleigh Avenue



■ Shared Ownership Apartment

# Studio apartments

Plots 128, 139 & 150

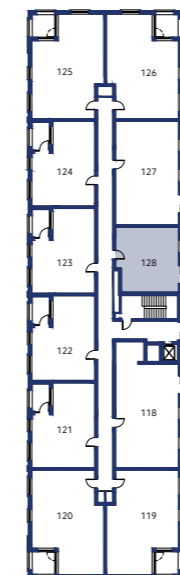


**Kitchen/Living/Dining Room/Bedroom**

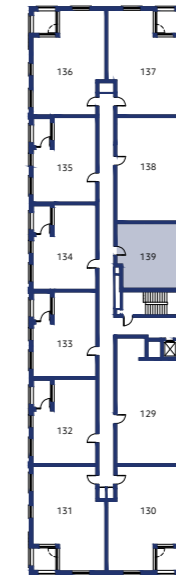
6.00m x 6.85m 19'8" x 22'6"

W Wardrobe C/B Cupboard  
U/S Utilities Store HIU Heat Interface Unit

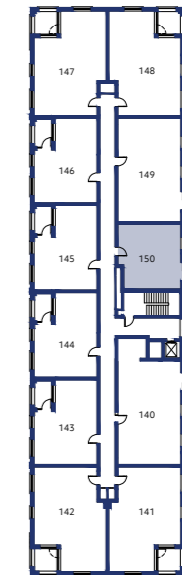
First Floor



Second Floor

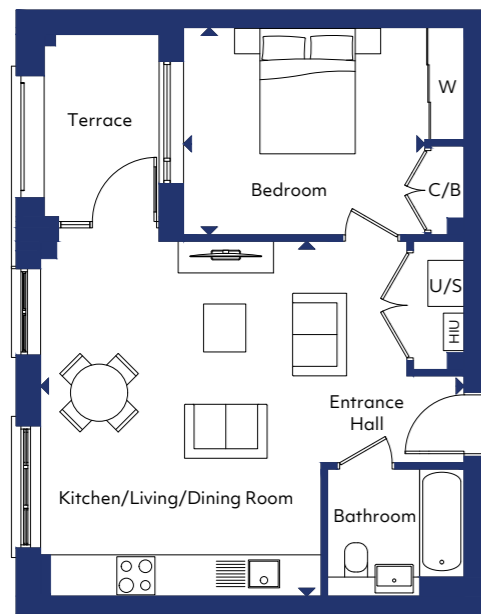


Third Floor



# One bedroom apartments

Plots 121, 122, 123, 124, 132, 133, 134, 135, 143, 144, 145 & 146



**Kitchen/Living/Dining Room**  
6.65m x 5.55m 21'10" x 18'3"

**Bedroom**  
3.75m x 3.25m 12'4" x 10'8"

W Wardrobe C/B Cupboard  
U/S Utilities Store HIU Heat Interface Unit

# Two bedroom apartments

Plots 119, 120, 125, 126, 130, 131, 136, 137, 141, 142, 147 & 148



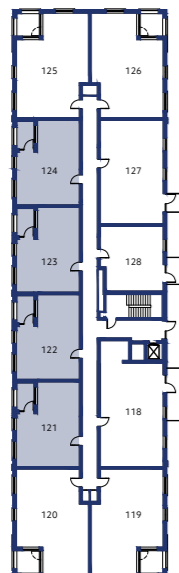
**Kitchen/Living/Dining Room**  
7.60m x 4.95m 24'11" x 16'3"

**Bedroom 1**  
4.45m x 3.10m 14'7" x 10'2"

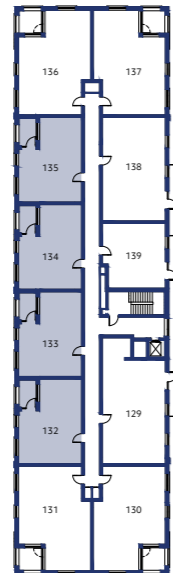
**Bedroom 2**  
4.30m x 3.05m 14'1" x 10'0"

W Wardrobe C/B Cupboard  
U/S Utilities Store HIU Heat Interface Unit

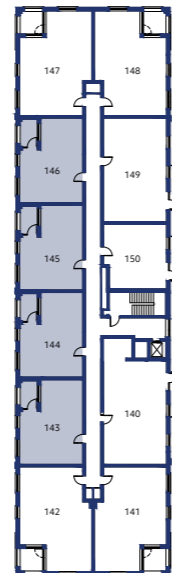
First Floor



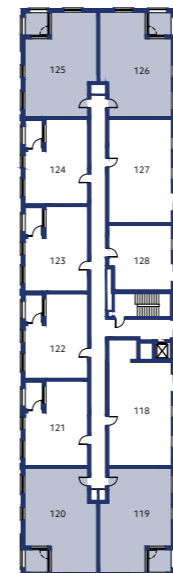
Second Floor



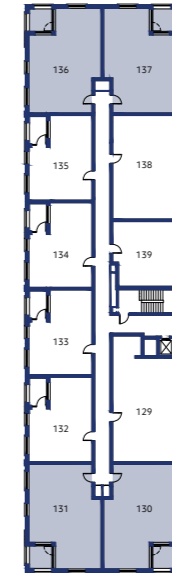
Third Floor



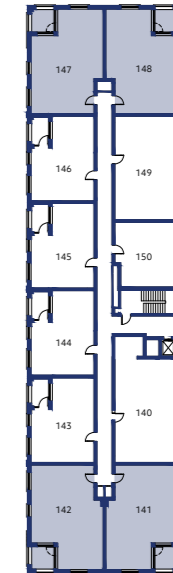
First Floor



Second Floor



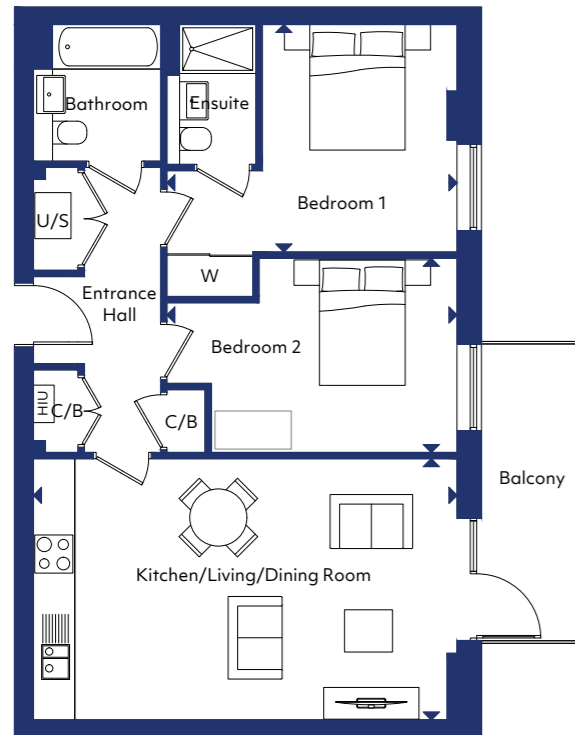
Third Floor



Orientation of plot varies, please refer to plan and speak to sales team for details

# Two bedroom apartments

Plots 127, 138 & 149



**Kitchen/Living/Dining Room**  
6.65m x 4.05m 21'10" x 13'3"

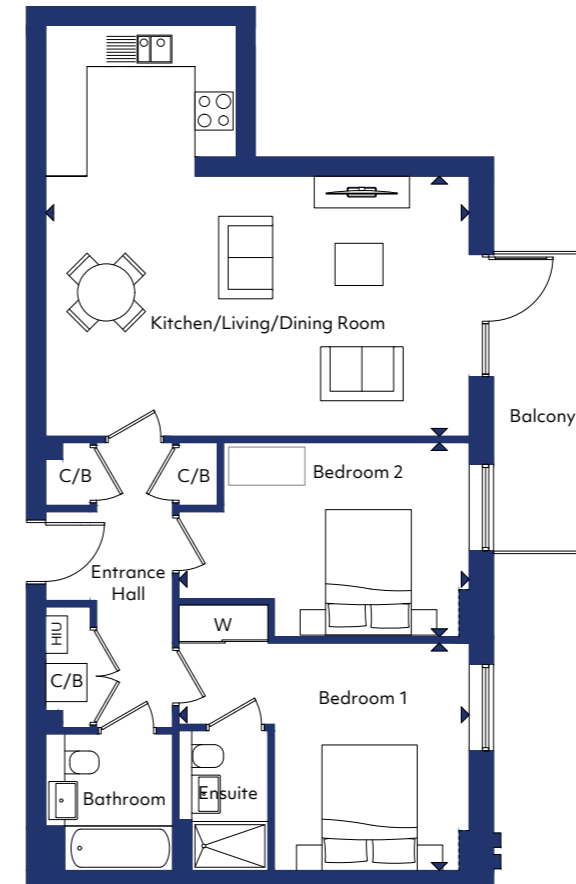
**Bedroom 1**  
4.55m x 3.55m 14'11" x 11'8"

**Bedroom 2**  
4.55m x 3.05m 14'11" x 10'0"

W Wardrobe C/B Cupboard  
U/S Utilities Store HIU Heat Interface Unit

# Two bedroom apartments

Plots 118, 129 & 140



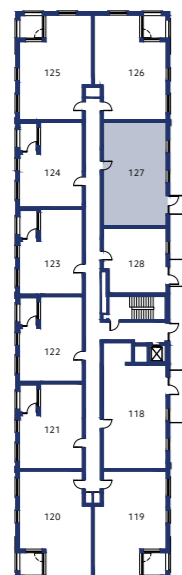
**Kitchen/Living/Dining Room**  
6.65m x 4.05m 21'10" x 13'3"

**Bedroom 1**  
4.55m x 3.55m 14'11" x 11'8"

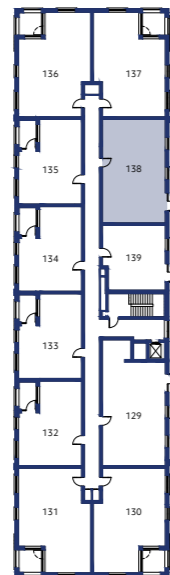
**Bedroom 2**  
4.55m x 3.05m 14'11" x 10'0"

W Wardrobe C/B Cupboard  
U/S Utilities Store HIU Heat Interface Unit

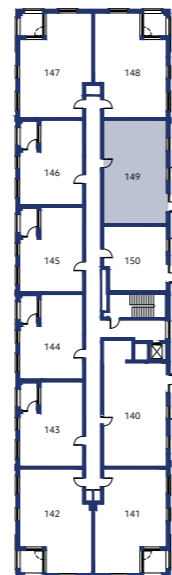
First Floor



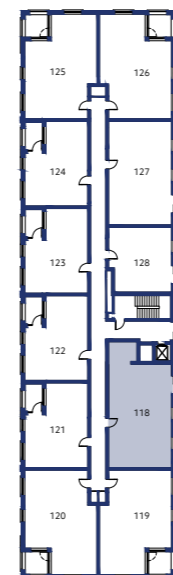
Second Floor



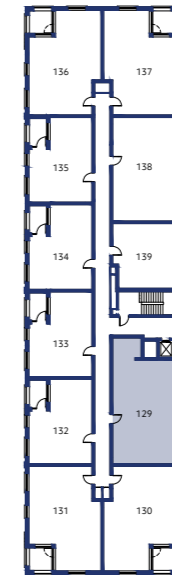
Third Floor



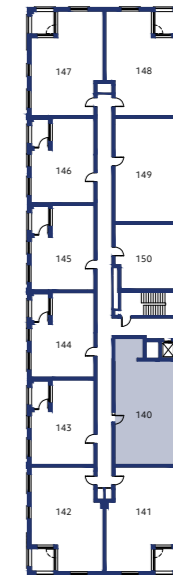
First Floor



Second Floor



Third Floor



Proudly brought to you by



[marleigh-cambridge.co.uk](http://marleigh-cambridge.co.uk)

Apartment layouts provide approximate measurements only and are subject to planning. Dimensions, which are taken from the indicated points of measurement, are for guidance only and are not intended to be used for window treatments or items of furniture. Bathroom and kitchen layouts are indicative only and are subject to change. Wardrobe size and position may vary. The information contained within this document does not constitute part of any offer, contract or warranty. Whilst the plans have been prepared with all due care for the convenience of the intending purchaser, the information contained herein is a preliminary guide only.