



RAYNERS GREEN

FORDHAM

THE WILLOW

PLOTS 54*, 55, 56*,
57, 81* & 82

2 BEDROOM
SEMI-DETACHED HOUSE

GROUND FLOOR

Kitchen

3.60m x 2.05m 11'8" x 6'7"

Living / Dining Room

4.30m x 4.80m 14'1" x 15'7"

FIRST FLOOR

Master Bedroom

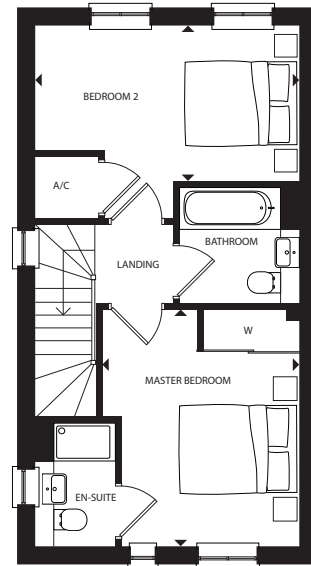
3.20m x 3.85m 10'5" x 12'6"

Bedroom 2

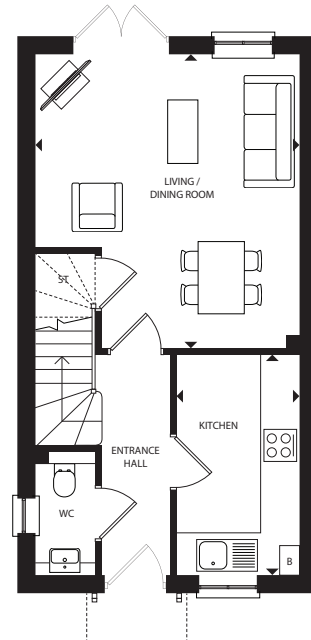
4.30m x 2.45m 14'1" x 8'0"

* Plots 54, 56 & 81 are handed to floor plans shown.

Layouts provide approximate measurements only and are subject to planning. Dimensions, which are taken from the indicated points of measurement, are for guidance only and are not intended to be used for window treatments or items of furniture. Bathroom and kitchen layouts are indicative only and are subject to change. Wardrobe size and position may vary. The information contained within this document does not constitute part of any offer, contract or warranty. Whilst the plans have been prepared with all due care for the convenience of the intending purchaser, the information contained herein is a preliminary guide only.



FIRST
FLOOR



GROUND
FLOOR

ST - STORAGE CUPBOARD W - WARDROBE B - BOILER A/C - AIRING CUPBOARD

A proud collaboration between

