



THE SNOWDROP

PLOT 73

4 BEDROOM
DETACHED HOUSE

GROUND FLOOR

Kitchen

3.10m x 4.65m 10'2" x 15'3"

Living / Dining Room

5.90m x 3.90m 19'4" x 12'9"

FIRST FLOOR

Master Bedroom

4.10m x 4.00m 13'5" x 13'1"

Bedroom 2

3.20m x 3.35m 10'9" x 10'10"

Bedroom 3

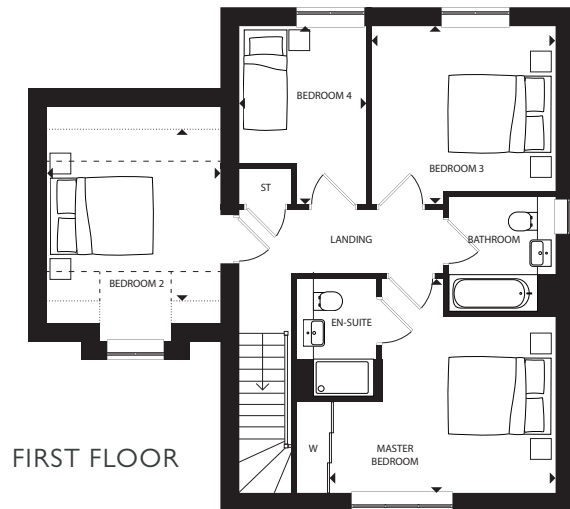
3.40m x 3.30m 11'1" x 10'9"

Bedroom 4

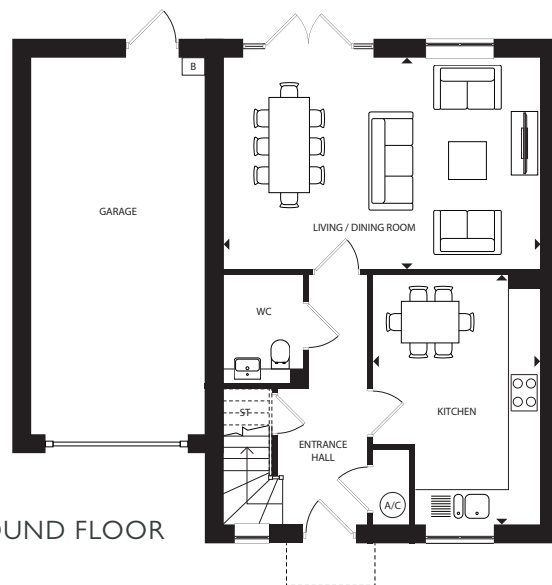
2.35m x 3.30m 7'8" x 10'9"

Measurements are maximum dimensions.

External materials vary between plots. Please speak to our sales team for more information. Layouts provide approximate measurements only and are subject to planning. Dimensions, which are taken from the indicated points of measurement, are for guidance only and are not intended to be used for window treatments or items of furniture. Bathroom and kitchen layouts are indicative only and are subject to change. Wardrobe size and position may vary. The information contained within this document does not constitute part of any offer, contract or warranty. Whilst the plans have been prepared with all due care for the convenience of the intending purchaser, the information contained herein is a preliminary guide only.



FIRST FLOOR



GROUND FLOOR

ST - STORAGE CUPBOARD W - WARDROBE B - BOILER A/C - AIRING CUPBOARD
— — — 2.1m CEILING HEIGHT · · · · · 1.5m CEILING HEIGHT